

# INDUSTRIEL • À LOUER INDUSTRIAL • FOR LEASE

8074-8116 route Transcanada, Saint-Laurent QC

± 2,288 - 8,259 PI<sup>2</sup> | SF



Propriété industrielle multi-locataires, pour des activités manufacturières légères ou de services industriels  
Bien située dans le secteur industriel de Ville Saint-Laurent, sur l'autoroute Transcanadienne  
Proche des autoroutes 13, 40 et 520

Multi-tenant Industrial Property for light manufacturing or industrial service activities  
Well located in Ville Saint-Laurent Industrial sector, directly on the Trans-Canada Highway  
Close to highways 13, 40 and 520

## MITCHELL TKATCH

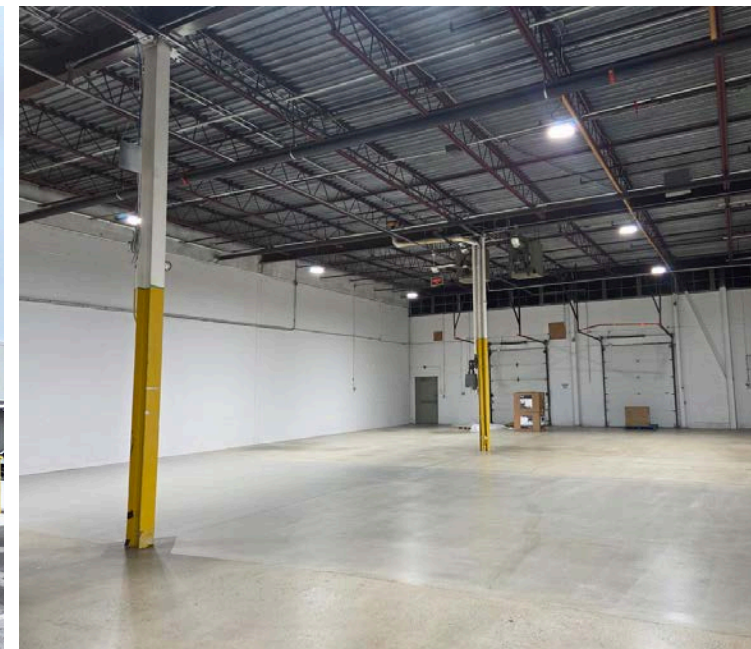
Vice-Président | Vice President  
Mitchell Tkatch Courtier Immobilier Inc.  
Courtier Immobilier / Real Estate Broker  
514 924 9655  
tkatch@whiteinc.ca

## STEVEN WHITE, SIOR

Courtier Immobilier Agréé DA  
Real Estate Broker Certified AEO  
514 249 5723  
steven@whiteinc.ca

IMMEUBLES  
**MICHAEL WHITE inc.**  
MWR.ca  
AGENCE IMMOBILIERE

UNIT	DISPO. AVAIL.	TOTAL PI <sup>2</sup>   SF	ENTREPÔT WAREHOUSE	BUREAUX OFFICES	HAUTEUR L. CLEAR H.	QUAIS DE C. TRUCK LEVEL	TARIF NET <small>Négotiable</small> NET PRICE <small>Negotiable</small>	OPEX
<b>8112</b>	IMM.	± 8,259	± 6,855	± 17%	18'	2 T/L - 1 D/I	\$ 12.50 / PI <sup>2</sup>   SF	\$ 8.96 / PI <sup>2</sup>   SF
<b>8116</b>	IMM.	± 6,070	± 3,217	± 46,5%	17'10"	2	\$ 12.50 / PI <sup>2</sup>   SF	\$ 8.96 / PI <sup>2</sup>   SF
<b>8100 N</b>	IMM.	± 5,734	± 5,333	± 5-7%	18'	1	\$ 10.00 / PI <sup>2</sup>   SF	\$ 8.96 / PI <sup>2</sup>   SF
<b>8100 C/D</b>	IMM.	± 5,604	± 5,044	± 8-10%	18'	2	\$ 12.50 / PI <sup>2</sup>   SF	\$ 8.96 / PI <sup>2</sup>   SF
<b>8096</b>	IMM.	± 4,007	± 3,206	± 20%	18'	1	\$ 10.00 / PI <sup>2</sup>   SF	\$ 8.96 / PI <sup>2</sup>   SF
<b>8086</b>	IMM.	± 2,316	± 1,251	± 46%	18'	1	\$ 11.00 / PI <sup>2</sup>   SF	\$ 8.96 / PI <sup>2</sup>   SF
<b>8078</b>	IMM.	± 2,288	± 1,375	± 40%	18'	1	\$ 12.50 / PI <sup>2</sup>   SF	\$ 8.96 / PI <sup>2</sup>   SF





ENTRÉE PRINCIPALE  
MAIN ENTRANCE

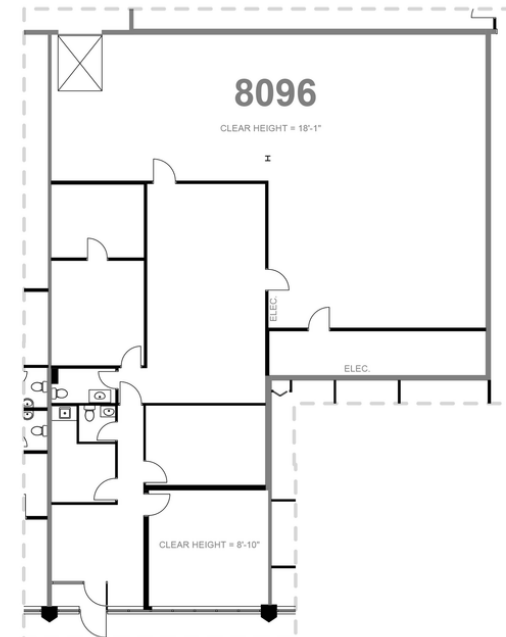
AUT. TRANSCANADA

### SUITE 8086







	Superficie disponible Available Area	± 2,316 PI <sup>2</sup>   SF
	Superficie entrepôt Warehouse Area	± 1,251 PI <sup>2</sup>   SF
	Portion bureaux Office part	± 46%
	Quai de chargement Truck Level door	1
	Tarif de location NET NET Rental Rate	\$ 11.00 / PI <sup>2</sup>   SF
	Frais d'opérations Operating expenses	\$ 8.96 / PI <sup>2</sup>   SF

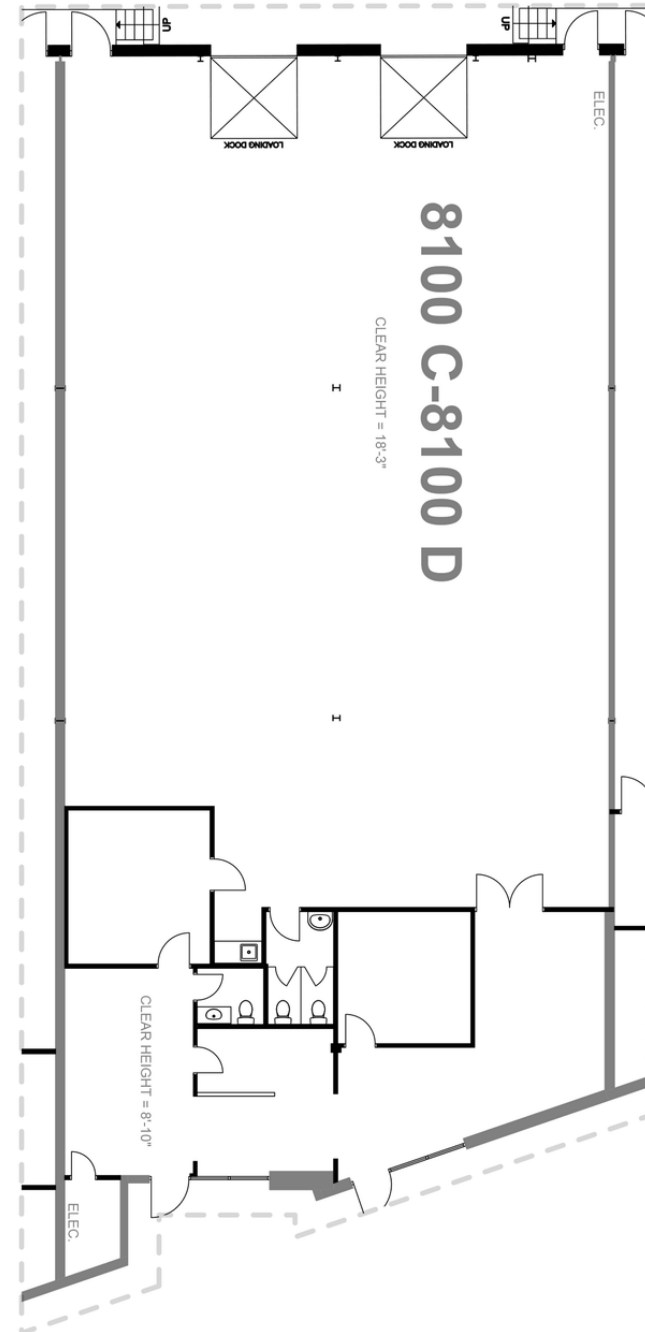
### SUITE 8096

	Superficie disponible Available Area	± 4,007 PI <sup>2</sup>   SF
	Superficie entrepôt Warehouse Area	± 3,206 PI <sup>2</sup>   SF
	Portion bureaux Office part	± 20%
	Quai de chargement Truck Level door	1 (EN COMMUN / COMMON)
	Tarif de location NET NET Rental Rate	\$ 10.00 / PI <sup>2</sup>   SF
	Frais d'opérations Operating expenses	\$ 8.96 / PI <sup>2</sup>   SF









### SUITE 8100 C/D







	Superficie disponible Available Area	± 5,604 PI <sup>2</sup>   SF
	Superficie entrepôt Warehouse Area	± 5,044 PI <sup>2</sup>   SF
	Portion bureaux Office part	± 8 - 10%
	Quais de chargement Truck Level doors	2
	Tarif de location NET NET Rental Rate	\$ 12.50 / PI <sup>2</sup>   SF
	Frais d'opérations Operating expenses	\$ 8.96 / PI <sup>2</sup>   SF

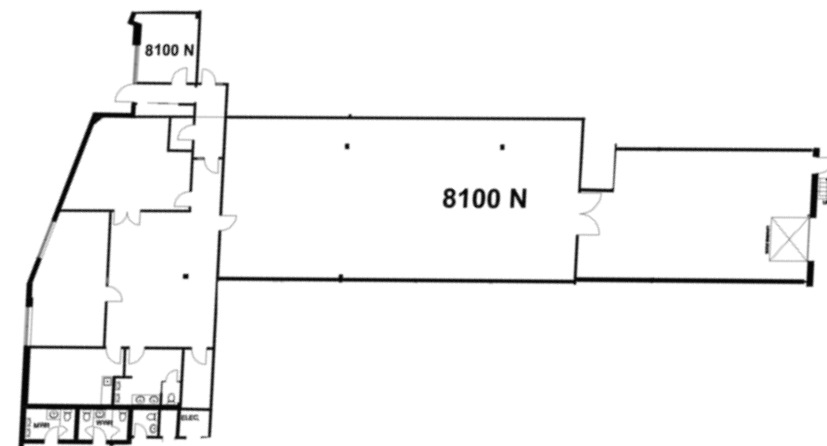


**SUITE 8078**

	Superficie disponible Available Area	± 2,288 PI <sup>2</sup>   SF
	Superficie entrepôt Warehouse Area	± 1,375 PI <sup>2</sup>   SF
	Portion bureaux Office part	± 40%
	Quai de chargement Truck Level door	1
	Tarif de location NET NET Rental Rate	\$ 12.50 / PI <sup>2</sup>   SF
	Frais d'opérations Operating expenses	\$ 8.96 / PI <sup>2</sup>   SF

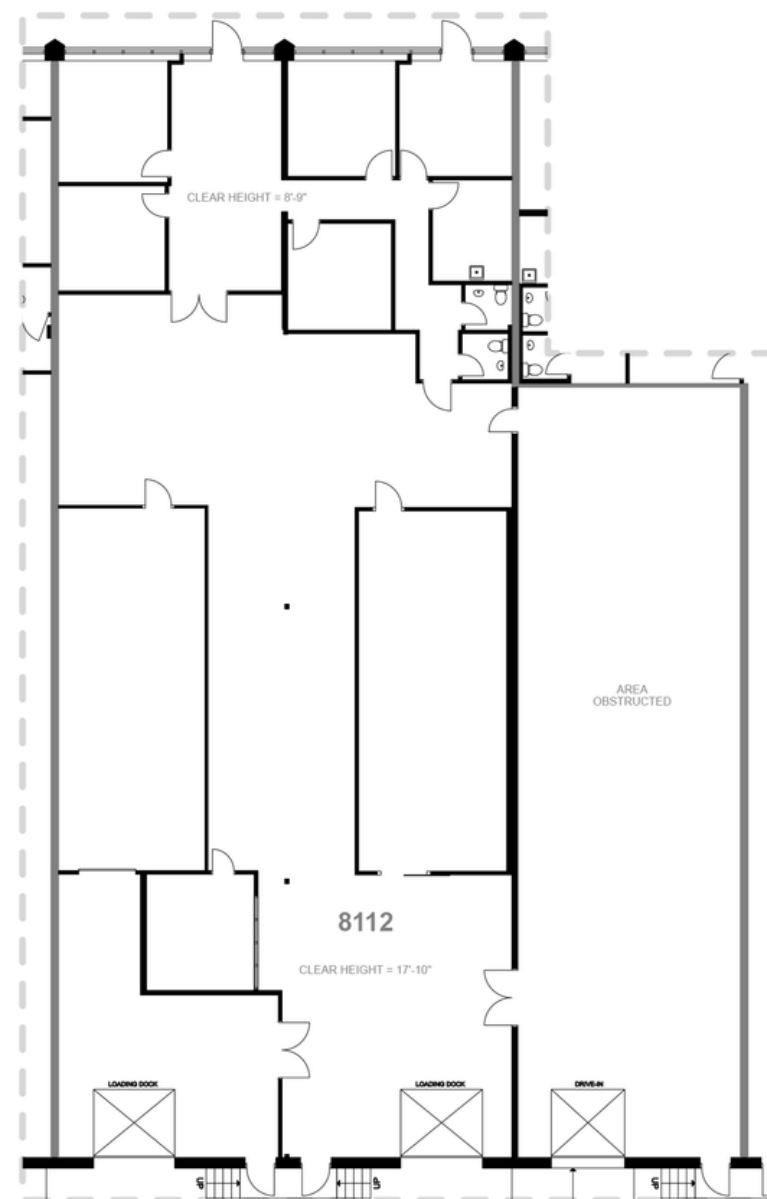
**SUITE 8100 N**

	Superficie disponible Available Area	± 5,734 PI <sup>2</sup>   SF
	Superficie entrepôt Warehouse Area	± 5,333 PI <sup>2</sup>   SF
	Portion bureaux Office part	± 5 - 7%
	Quai de chargement Truck Level door	1
	Tarif de location NET NET Rental Rate	\$ 10.00 / PI <sup>2</sup>   SF
	Frais d'opérations Operating expenses	\$ 8.96 / PI <sup>2</sup>   SF









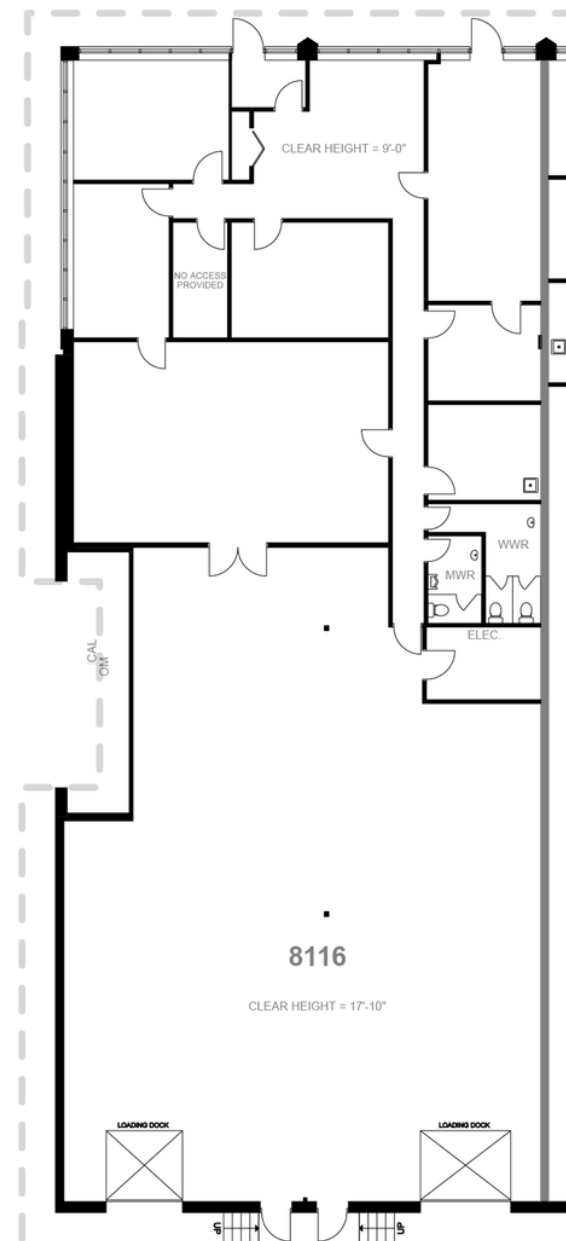
**SUITE 8112**

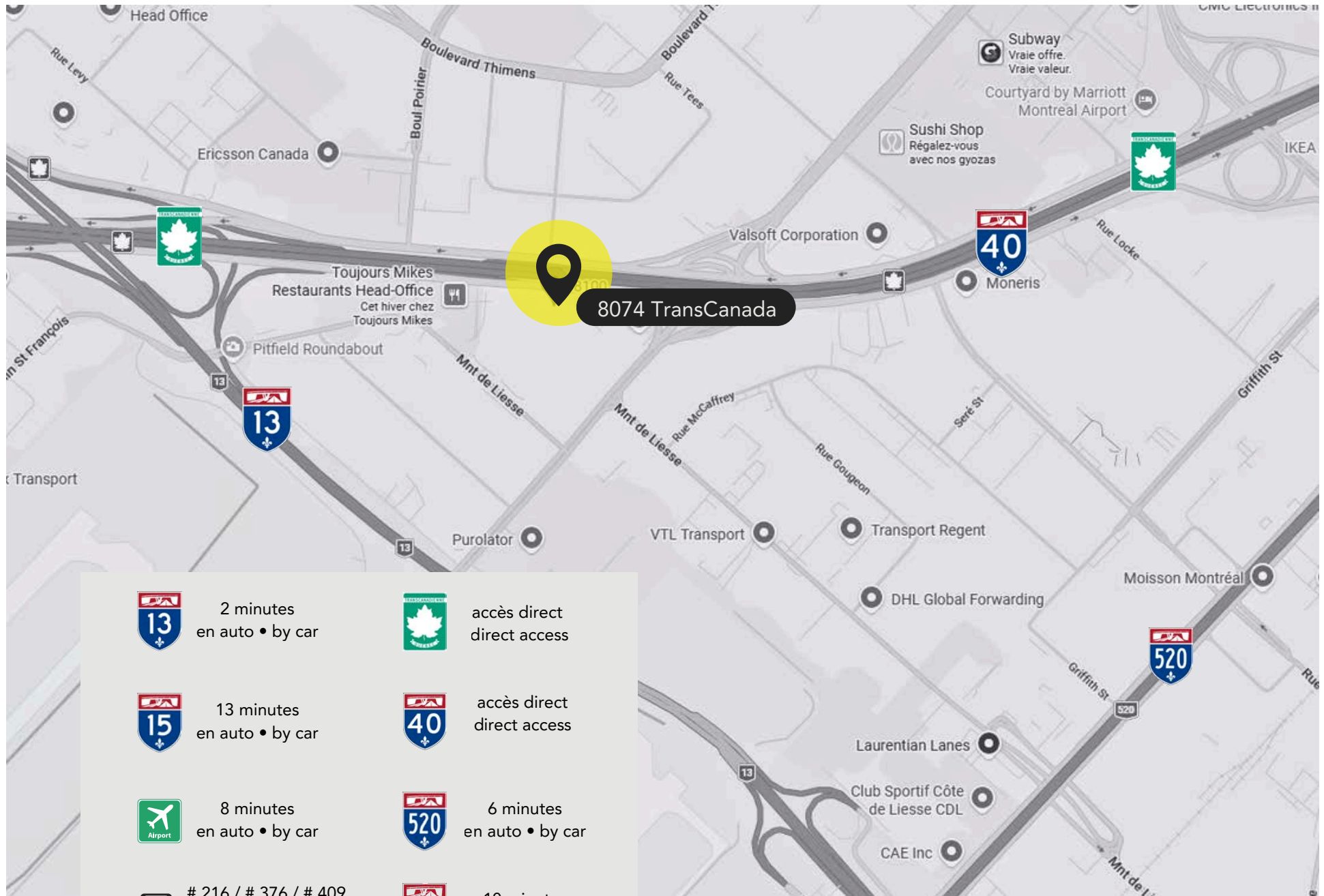
	Superficie disponible Available Area	± 8,259 PI <sup>2</sup>   SF
	Superficie entrepôt Warehouse Area	± 6,855 PI <sup>2</sup>   SF
	Portion bureaux Office part	± 17%
	Quais de chargement Truck Level doors	2
	Porte au sol Drive in door	1
	Tarif de location NET NET Rental Rate	\$ 12.50 / PI <sup>2</sup>   SF
	Frais d'opérations Operating expenses	\$ 8.96 / PI <sup>2</sup>   SF



## SUITE 8116

	Superficie disponible Available Area	± 6,070 PI <sup>2</sup>   SF
	Superficie entrepôt Warehouse Area	± 3,217 PI <sup>2</sup>   SF
	Portion bureaux Office part	± 46,5%
	Quai de chargement Truck Level door	2
	Tarif de location NET NET Rental Rate	\$ 12.50 / PI <sup>2</sup>   SF
	Frais d'opérations Operating expenses	\$ 8.96 / PI <sup>2</sup>   SF





8074 TransCanada



2 minutes  
en auto • by car



accès direct  
direct access



13 minutes  
en auto • by car



accès direct  
direct access



8 minutes  
en auto • by car



6 minutes  
en auto • by car



# 216 / # 376 / # 409  
+/- 3 minutes  
à pied • on foot



10 minutes  
en auto • by car

# CONTACT



## MITCHELL TKATCH

Vice-Président | Vice President  
Mitchell Tkatch Courtier Immobilier Inc.  
Courtier Immobilier / Real Estate Broker  
514 924 9655  
tkatch@whiteinc.ca



## STEVEN WHITE, S.I.O.R.

Courtier Immobilier Agréé DA  
Real Estate Broker Certified AEO  
514 249 5723  
steven@whiteinc.ca

IMMEUBLES  
**MICHAËL WHITE inc.**  
MWR.ca

AGENCE IMMOBILIERE

6800 CH DE LA CÔTE-DE-LIESSE #101  
SAINT-LAURENT QC H4T 2A7  
T 514 488 5111 F 514 483 6294

Cette publication ne constitue pas une promesse ou une offre d'achat ou de location qui pourrait lier le vendeur / locateur à l'acheteur / locataire, mais une invitation de proposer une promesse ou une offre d'achat ou de location. This offering does not constitute a promise or offer to sell or lease that could bind the seller / lessor, but an invitation to submit such a promise or an offer. Les informations ci-incluses proviennent de sources que nous jugeons fiables, une inspection diligente est recommandée à tout acheteur potentiel. Ces informations peuvent changer et la propriété peut être retirée du marché sans préavis. The information contained herein has been obtained from sources deemed reliable, potential purchasers should complete a due diligence inspection. This information may change and the property may be withdrawn from the market without notice © 2025 Michael White Realities Inc., Tout droits réservés / All Rights Reserved F2026