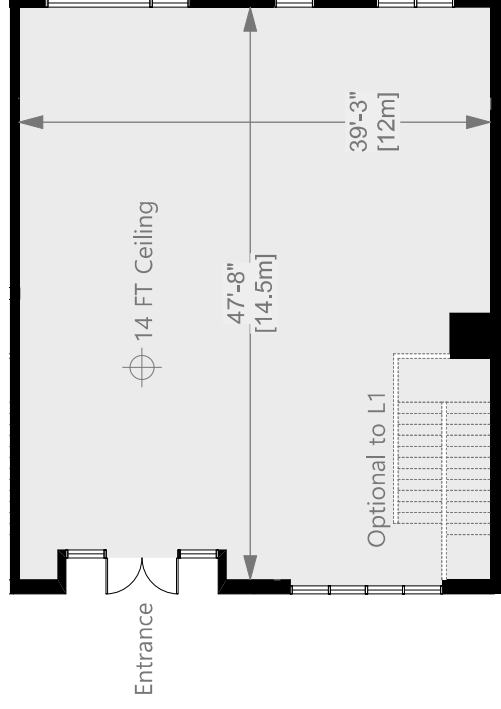


# Unit 18

4073 Old Slope Place, Nanaimo

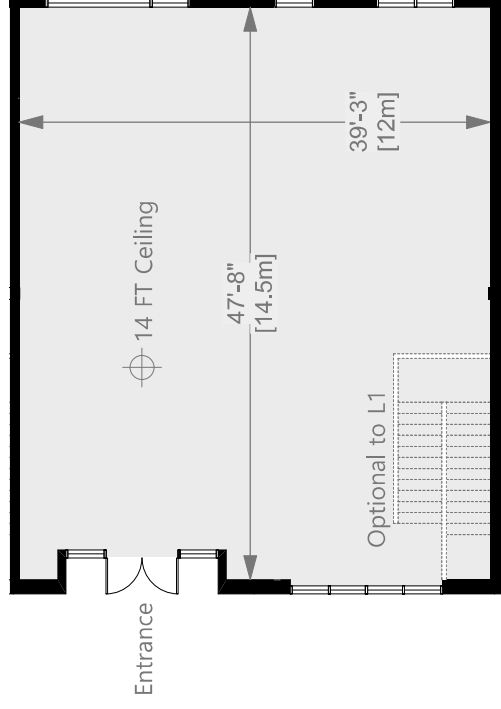
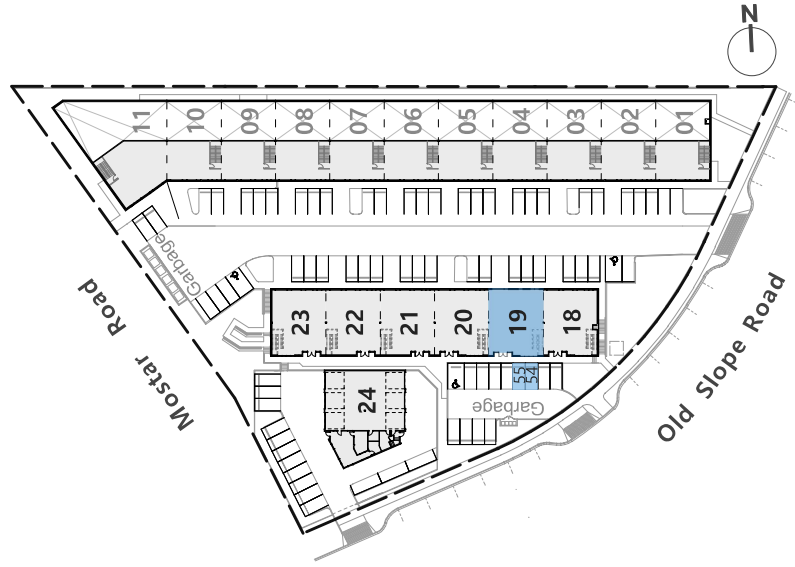
<b>Parking Stalls</b>	52, 53
<b>Level 1</b>	Optional Unit 12
<b>Level 2</b>	1,987 SF
<b>% Service Room</b>	14 SF
<b>Total</b>	2,001 SF



# Unit 19

4073 Old Slope Place, Nanaimo

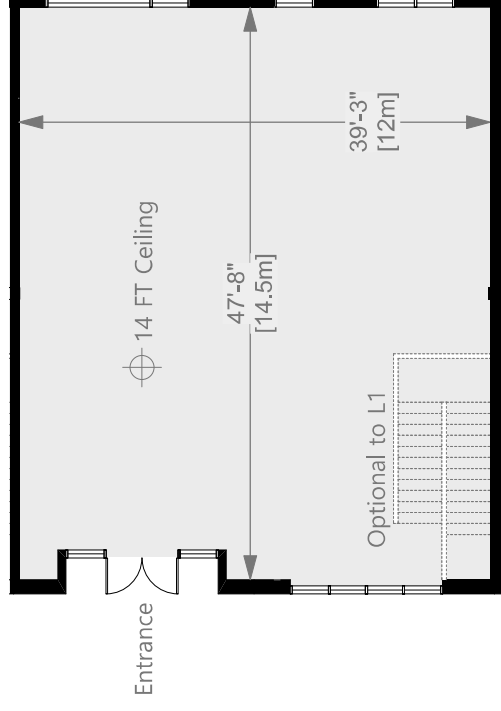
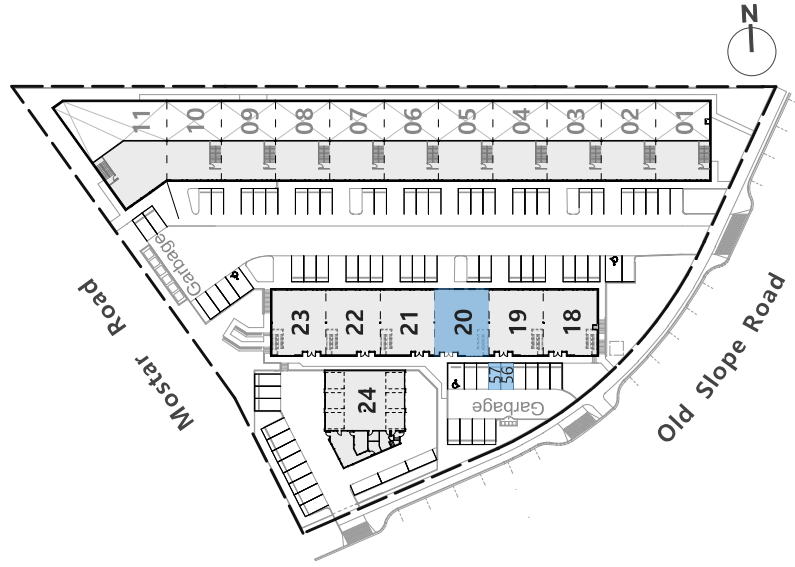
<b>Parking Stalls</b>	54, 55
<b>Level 1</b>	Optional Unit 13
<b>Level 2</b>	1,962 SF
<b>% Service Room</b>	14 SF
<b>Total</b>	1,976 SF



# Unit 20

4073 Old Slope Place, Nanaimo

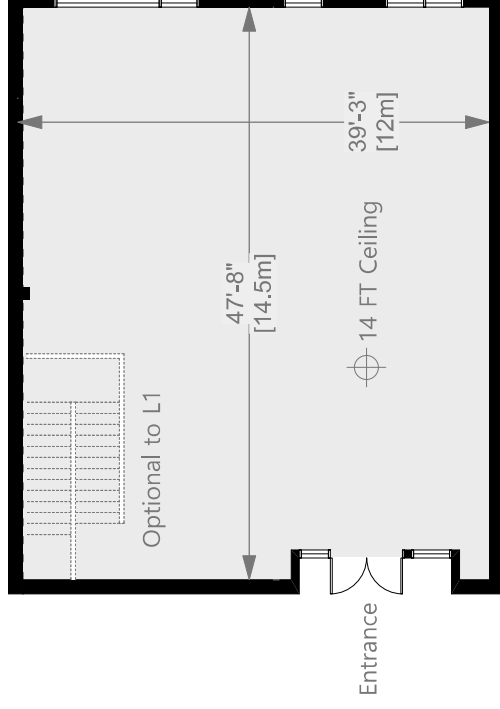
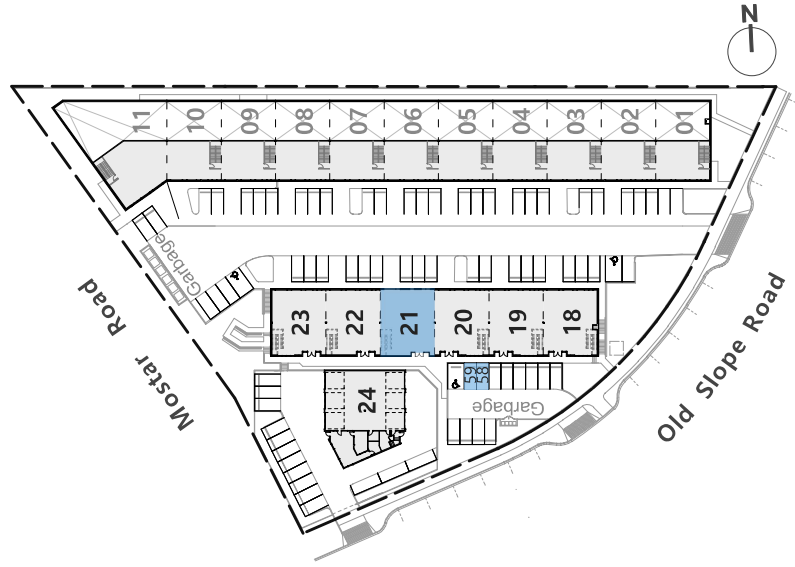
<b>Parking Stalls</b>	56, 57
<b>Level 1</b>	Optional Unit 14
<b>Level 2</b>	1,962 SF
<b>% Service Room</b>	14 SF
<b>Total</b>	1,976 SF



# Unit 21

4073 Old Slope Place, Nanaimo

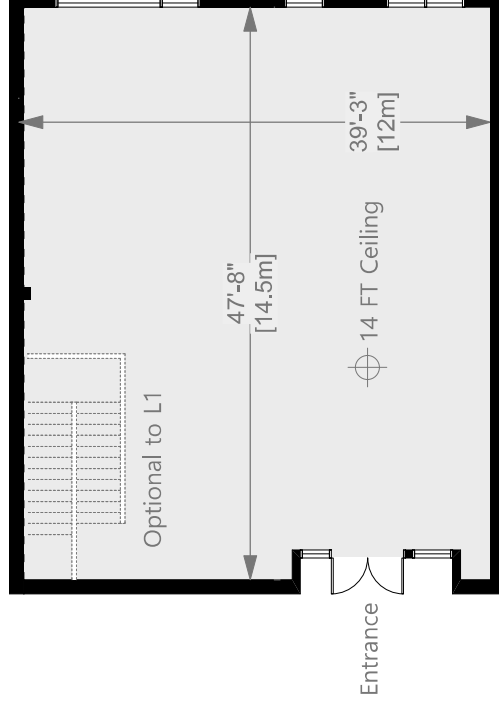
<b>Parking Stalls</b>	58, 59
<b>Level 1</b>	Optional Unit 15
<b>Level 2</b>	1,962 SF
<b>% Service Room</b>	14 SF
<b>Total</b>	1,976 SF



# Unit 22

4073 Old Slope Place, Nanaimo

<b>Parking Stalls</b>	61, 62
<b>Level 1</b>	Optional Unit 16
<b>Level 2</b>	1,962 SF
<b>% Service Room</b>	14 SF
<b>Total</b>	1,976 SF



# Unit 23

4073 Old Slope Place, Nanaimo

<b>Parking Stalls</b>	63, 64
<b>Level 1</b>	Optional Unit 17
<b>Level 2</b>	2,004 SF
<b>% Service Room</b>	14 SF
<b>Total</b>	2,018 SF

