



FOR SALE/LEASE

HIGHWAY 20 AND 47TH AVENUE, SYLVAN LAKE, AB



LOCATION

Sylvan Lake



SALE PRICE

Market



LEGAL DESCRIPTION

Plan 0729246, Block 7, Lot 19



POSSESSION

Negotiable



LOT SIZE

3.85 Acres



ZONING

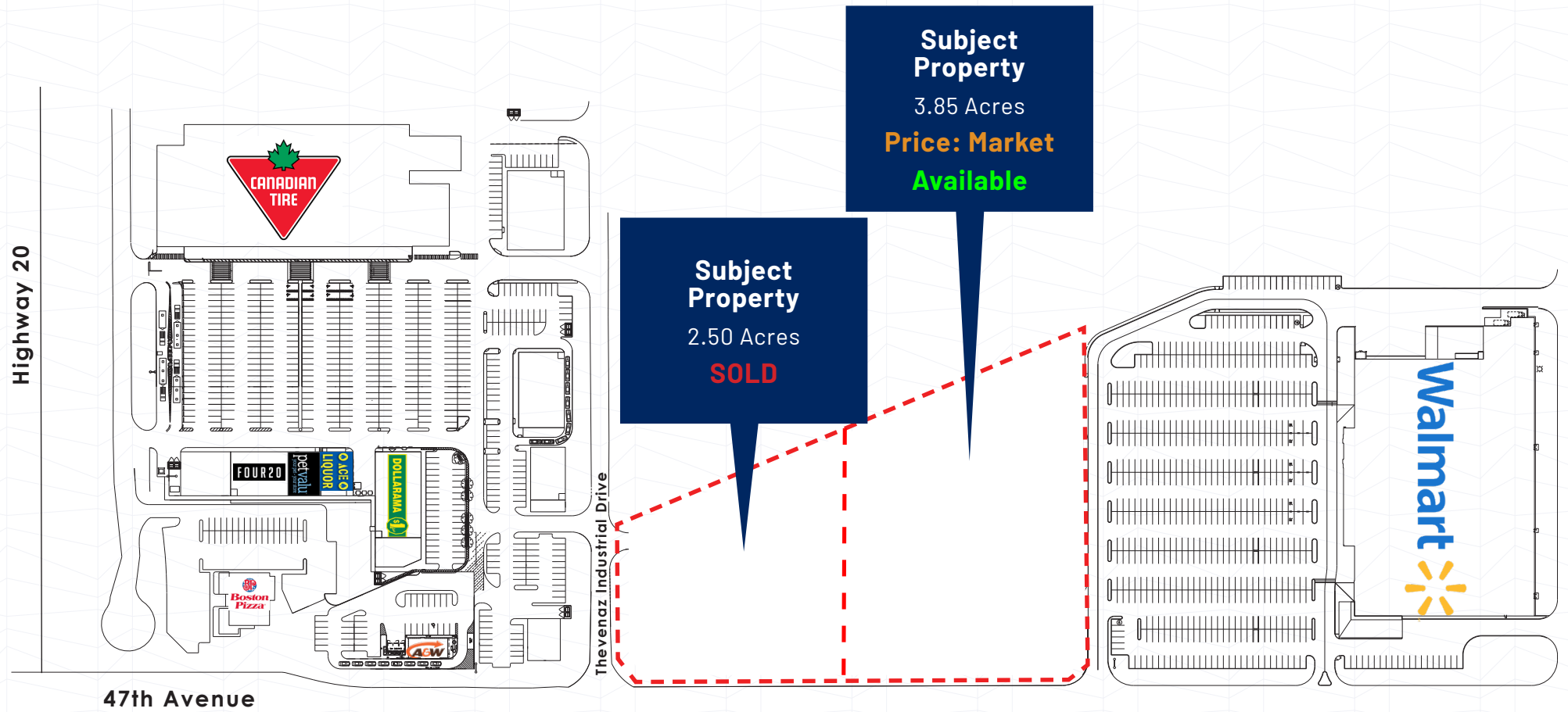
CH - Highway Commercial

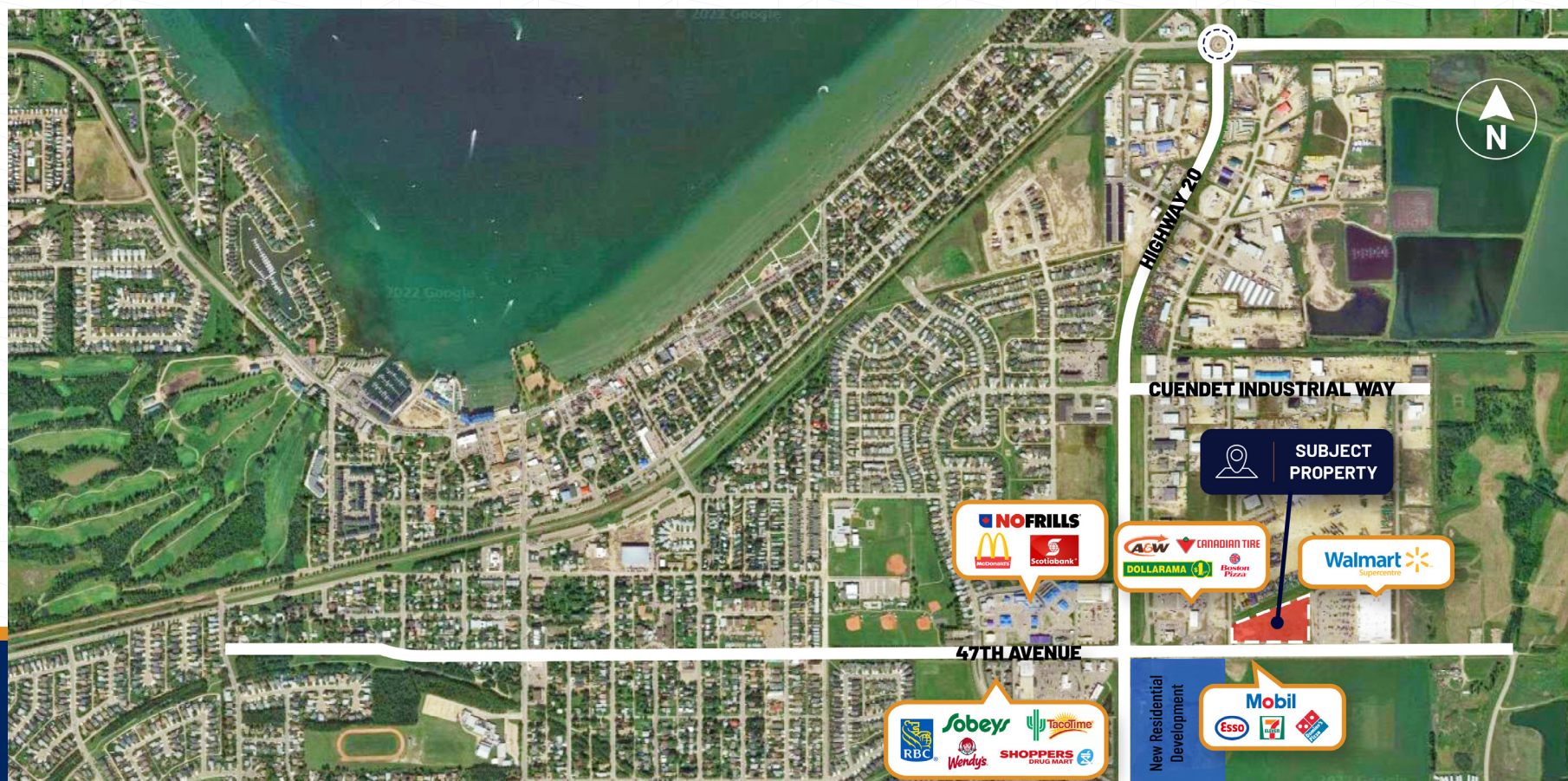
PROPERTY DETAILS

Opportunity to own commercial land for your business in a power centre site anchored with Walmart and Canadian Tire. Site is owned and operated by Smart Centres, one of Canada's largest retail REIT's. Great location with immediate access to Highway 20, Highway 11 and Highway 11A. Ground lease options will be considered.

Located 18 km west of the City of Red Deer in Central Alberta, Sylvan Lake has a population of 16,354 (2021) and attracts over 1 million visitors annually.

SITE PLAN





Central Alberta's Ambassador for Commercial Real Estate



SALOMONS
COMMERCIAL

#103, 4315 - 55 Avenue Red Deer, AB T4N 4N7
www.salomonscommercial.com

Brett Salomons
Listing Agent
403.314.6187
brett@salomonscommercial.com

Davin Kemshead
Associate
403.314.6190
davin@salomonscommercial.com

Kelly Babcock
Partner
403.314.6188
kelly@salomonscommercial.com

Max Field
Associate
403.314.6186
max@salomonscommercial.com

Mike Williamson
Associate
403.314.6189
mike@salomonscommercial.com

Jordan Krulicki
Associate
403.314.6185
jordan@salomonscommercial.com