 **JLL** SEE A BRIGHTER WAY

For Lease

Guildford Office Park

15225 104th Avenue, Surrey, BC
Suite 308 - 2,867 s.f.

SALIENT DETAILS



SUITE 308
2,867 s.f.



NET RATE
Please contact
listing agent



ADDITIONAL RENT
\$16.52 psf/pa
(2026 estimate)



PARKING
1 stall/500 s.f. at
market rates



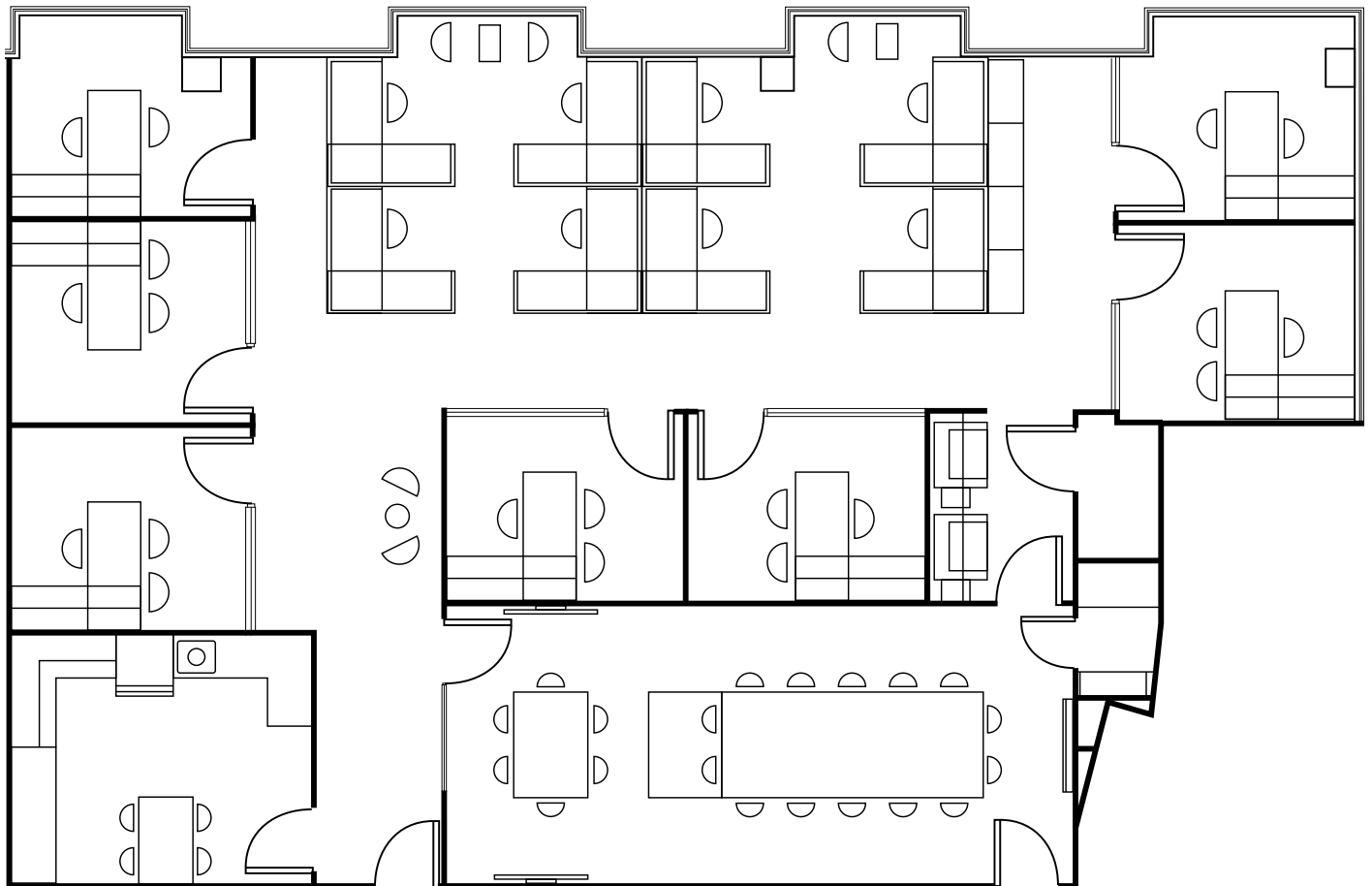
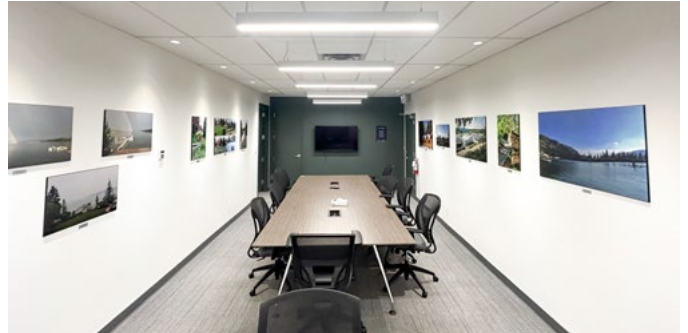
FURNITURE
Available

SUITE COMMENTS

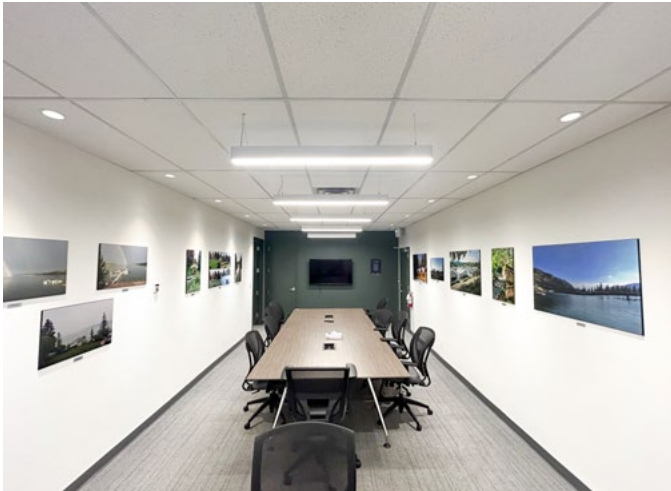
New improvements built to a high standard, consisting of 7 offices, 8 workstations, large boardroom, and lunch room.

TENANT IMPROVEMENT

Tenant improvement allowance is available for tenants who would like to customize their space. Please contact listing agent for details.



SUITE 308 INTERIOR PHOTOS



LOCATION DETAILS

Strategically located at the Gateway to Surrey, Guildford Office Park is situated on the corner of 152nd Street and 104th Avenue with direct access to Hwy 1 via the 152nd on-ramp. Area amenities include restaurants, hotels and world class shopping at the newly renovated Guildford Town Centre. Guildford Office Park is also located next to Translink's Guildford Exchange with frequently scheduled bus routes to the Surrey Central SkyTrain Station.



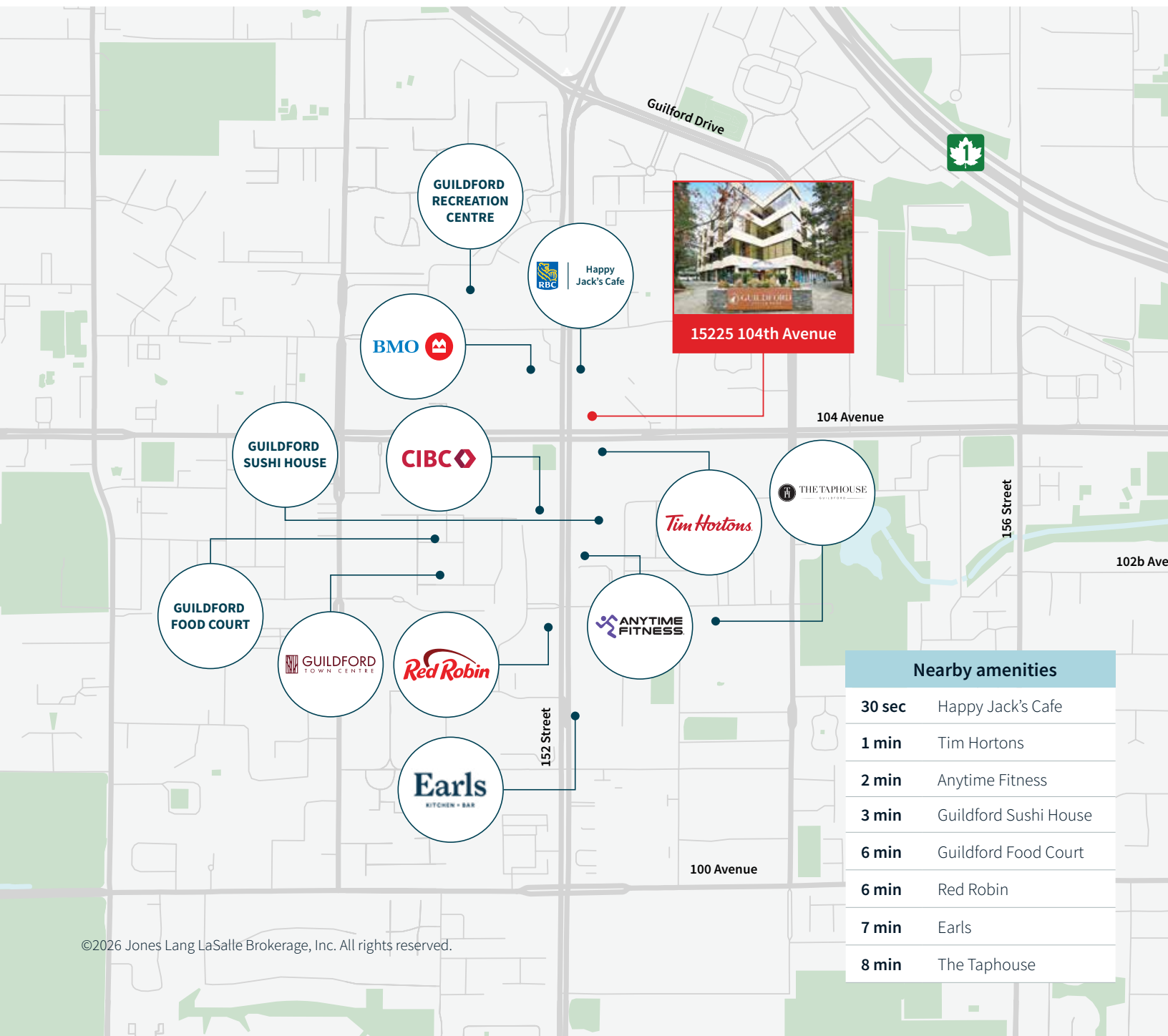
Recently renovated common areas



Bike lock-up area in underground parkade



Central location with immediate access to Highway 1





Andrew Astles

Associate Vice President

+1 604 363 6673

andrew.astles@jll.com

Although information contained herein has been obtained from sources deemed reliable, the owner, Jones Lang LaSalle Real Estate Services, Inc. ("JLL Canada"), and/or their representatives, brokers or agents make no guarantees as to the accuracy of the information contained herein, and offer the property/portfolio without express or implied warranties of any kind. The property/portfolio may be withdrawn without notice. If the recipient of this information has signed a confidentiality agreement regarding this matter, this information is subject to the terms of that agreement.

