

# FOR LEASE

3,161 Sq. Ft. (+/-)

# LIZOTTE

AND ASSOCIATES REAL ESTATE INC



**15109 Stony Plain Road, Edmonton, AB**

## TURN-KEY YOGA SPACE

### Property Highlights

- Located in major power centre “Revolution Square” on the corner of 151 Street and Stony Plain Road
- Main floor unit is a fully built-out yoga space
- Excellent visibility with lots of natural light
- Join neighboring tenants: Revolution Cycle, Fashion Tailors Ltd., Doggy Style Deli, and many more
- Ample on-site parking



780.488.0888



[www.lizotterealestate.com](http://www.lizotterealestate.com)



#1200, 10117 Jasper Avenue  
Edmonton, AB T5J 1W8

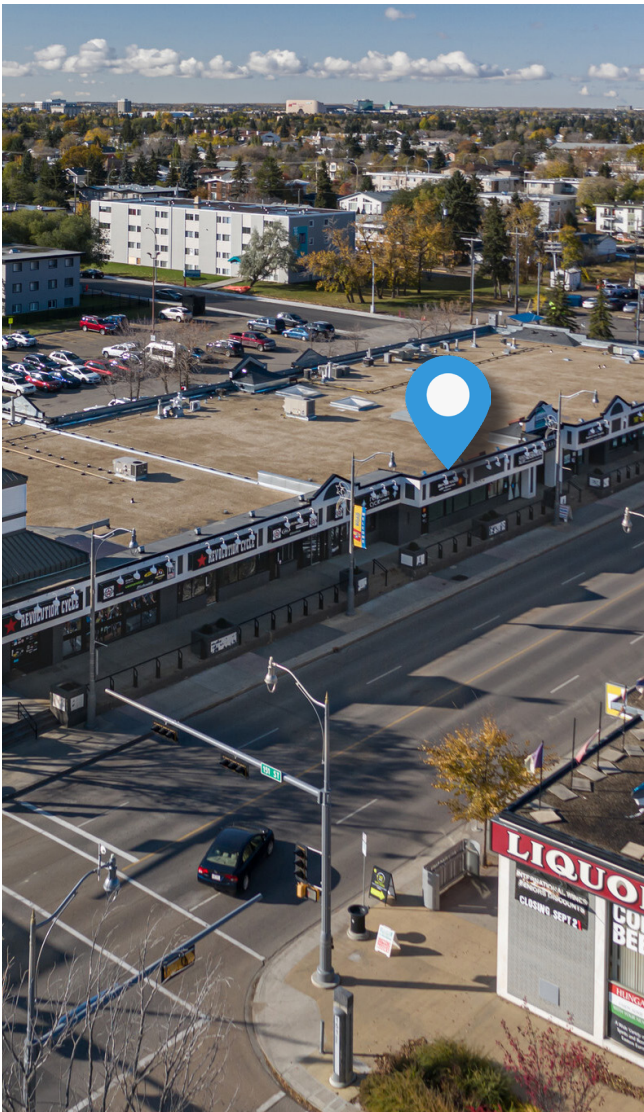


No warranty or representation, expressed or implied, is made as to the accuracy of the information contained herein, and same is submitted subject to errors, omissions, change of price, rental or other conditions, withdrawal without notice, and to any specific listing condition, imposed by our principals.

# FOR LEASE

Revolution Square

**LIZOTTE**  
AND ASSOCIATES REAL ESTATE INC



# FOR LEASE

Revolution Square

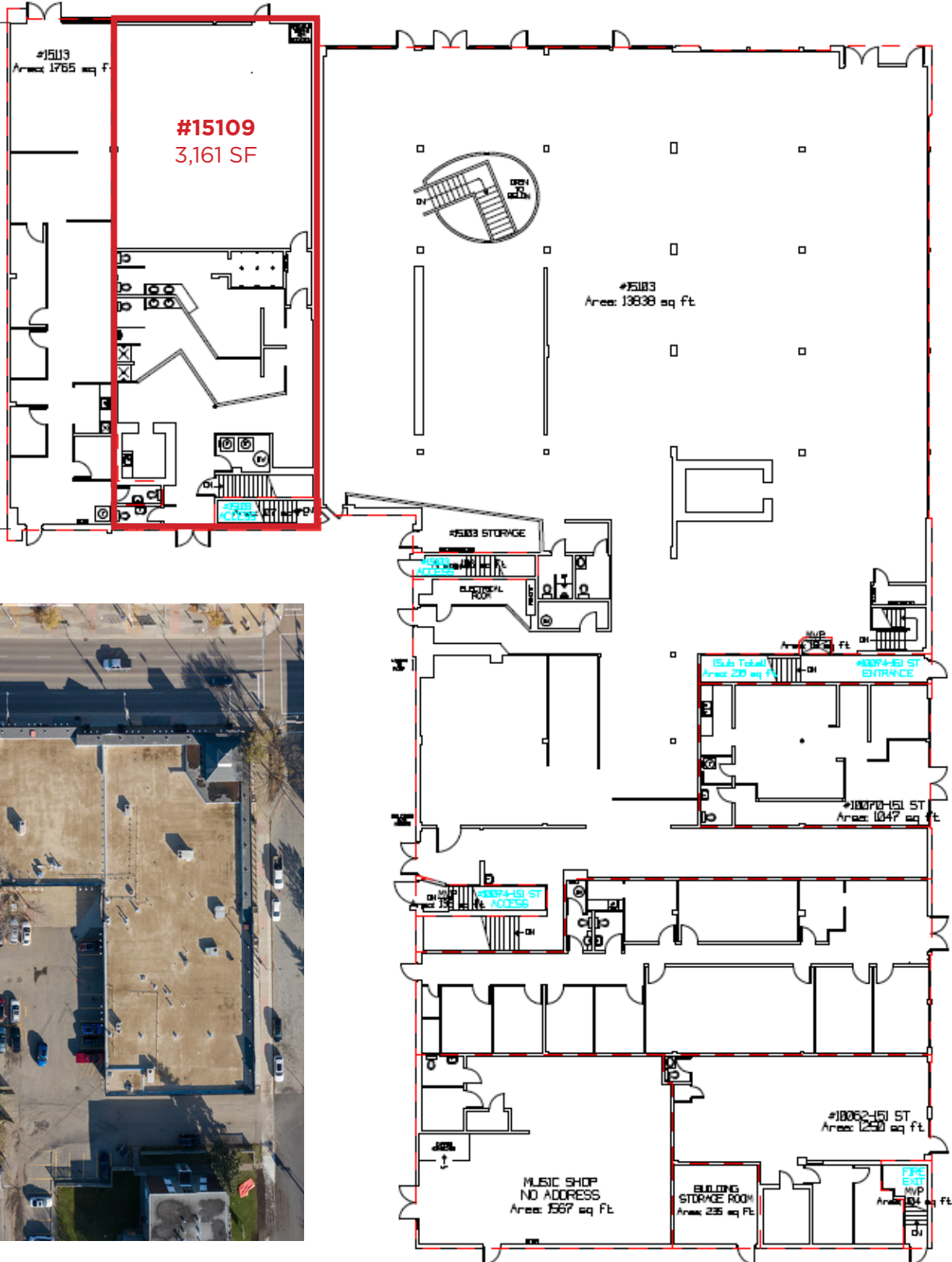
**LIZOTTE**  
AND ASSOCIATES REAL ESTATE INC



# FOR LEASE

Revolution Square

## Stony Plain Road



151 Street



# FOR LEASE

## Revolution Square

**LIZOTTE**  
AND ASSOCIATES REAL ESTATE INC

### Property Information

**Municipal Address:** 15109 Stony Plain Road, Edmonton, AB

**Size:** 3,161 Sq. Ft. (+/-)

**Zoning:** CB1 (Low-Intensity Business Zone)

**Parking:** Ample secure surface parking

**Possession:** Immediate/negotiable

\$\$\$

**Lease Rate:** Market

**OP Costs:** \$9.78/Sq. Ft. (2024)

### Contact

**David J. Olson**  
Senior Associate  
Cell: 780.908.1650  
Direct: 780.784.5356  
david@lizotterealestate.com

**Justin Sorensen**  
Associate  
Cell: 780.257.6860  
Direct: 780.784.9581  
justin@lizotterealestate.com

**Soudabeh Mobin**  
Unlicensed Assistant  
Cell: 780.340.9595  
Direct: 780.784.9583  
soudabeh@lizotterealestate.com

### Demographics within 2KM

