

BUILDING CODE REVIEW	DATE: 13-MAY-2013
CIVIC:	1335 7TH AVENUE, PRINCE GEORGE, BC V2L 3N9
LEGAL:	LOTS 5-7 & 8, BLOCK 183, DISTRICT LOT 343, C, D, PLAN 1268
BASIS:	BRITISH COLUMBIA BUILDING CODE 2012
GENERAL DESCRIPTION	
USE:	MEDICAL CENTRE (TENANT IMPROVEMENT)
HEIGHT:	2 STORIES
ORIGINAL CONSTRUCTION DATED:	1962
CONSTRUCTION:	NON-COMBUSTIBLE / COMBUSTIBLE
OVERALL BUILDING FLOOR AREA:	870 m ² [9364.6 ft ²]
SPRINKLERED:	NO
NO. OF FACING STREETS:	1 STREET (7TH AVENUE)

OCCUPANCY	
PREVIOUS OCCUPANCY:	MAJOR - GROUP A DIVISION 2 - ASSEMBLY
PROPOSED OCCUPANCY:	MAJOR - GROUP D - PERSONAL SERVICES

LOAD CALCULATIONS:
TABLE 3.1.17.1 BCBC 2012
*EXIT CAPACITY CALCULATIONS & RATES ARE PER ARTICLE 3.4.3.2
REFER TO ROOM SCHEDULE ON SHEET A-102 FOR OCCUPANT LOAD CALCULATIONS

TOTAL CALCULATED OCCUPANT LOAD = 98 PEOPLE
HEALTH / WATER CLOSETS

3.7.2.2.(2) ~~98 OCCUPANTS - 10 = 88 OCCUPANTS~~
THIS PHASE 34 OCCUPANTS - 10 = 24 OCCUPANTS

3.7.2.2.(12)		REQUIRED	PROVIDED
MALE		1	1
FEMALE		1	1

BUILDING CONSTRUCTION / SEPARATIONS

3.2.2.60 GROUP D, UP TO 2 STOREYS
SEPARATIONS / FIRE RESISTANCE RATING (FRR)
3.2.2.60.(2) COMBUSTIBLE AND NON-COMBUSTIBLE CONSTRUCTION PERMITTED

		REQUIRED	PROVIDED
(a) FLOOR ASSEMBLIES		0.75 HR	EXISTING 0.75 PROVIDED
(b) MEZZANINE		N/A	N/A
(d) LOADBEARING		0.75 HR	EXISTING

3.1.3.1. OCCUPANCY SEPARATION (GROUP D TO GROUP A / D / E) 1 HR 1 HR
3.1.8.10 RATING OF CLOSURE ONLY DOORS IN PUBLIC CORRIDORS 20 MIN. 20 MIN.

EXITING SYSTEM

3.4.3.2	EXIT WIDTH	REQUIRED	PROVIDED
3.4.3.2.(1)(a)	6.1 mm / PERSON x 98	597.8 mm	2769 mm

LOCATION OF EXITS

3.4.2.3	MIN. DISTANCE BETWEEN EXITS (1/2 DIAGONAL)	23.3 m	40.4 m
3.4.2.5.(1)(b)	MAX. TRAVEL DISTANCE TO ONE EXIT	40m	SEE PLAN

CLEARANCES

3.4.3.2.(8)	GENERAL	1,100 mm	1,524 mm
3.4.3.2.(8)	DOORWAYS	800 mm	914 mm

HEADROOM CLEARANCES

3.4.3.4.(1) EXIT: MINIMUM 2.05 m CLEAR [6'-8 3/4"]
3.4.3.4.(4) DOORS: MINIMUM 2.03 m [6'-8"]
3.4.3.4.(5) DOOR CLOSURES: MINIMUM 1.98 m [6'-6"]

FIRE STOPPING

TO COMPLY WITH CAN4-S115-M STANDARDS ULC LISTED FOR APPLICABLE F, FH, OR FTH RATING

FIRE ALARM

3.2.4.9 ANNUNCIATOR PANEL NOT REQUIRED

DOOR RELEASE HARDWARE

3.4.6.16 EXIT DOORS TO BE READILY OPENED FROM THE INSIDE WITH NOT MORE THAN ONE RELEASING OPERATION AND WITHOUT REQUIRING KEYS, SPECIAL DEVICES OR SPECIALIZED KNOWLEDGE OF THE DOOR OPENING MECHANISM.
PRIMARY CUSTOMER ENTRY DOOR WITH NOT MORE THAN A 90 DEGREE THUMBTURN ACTION.

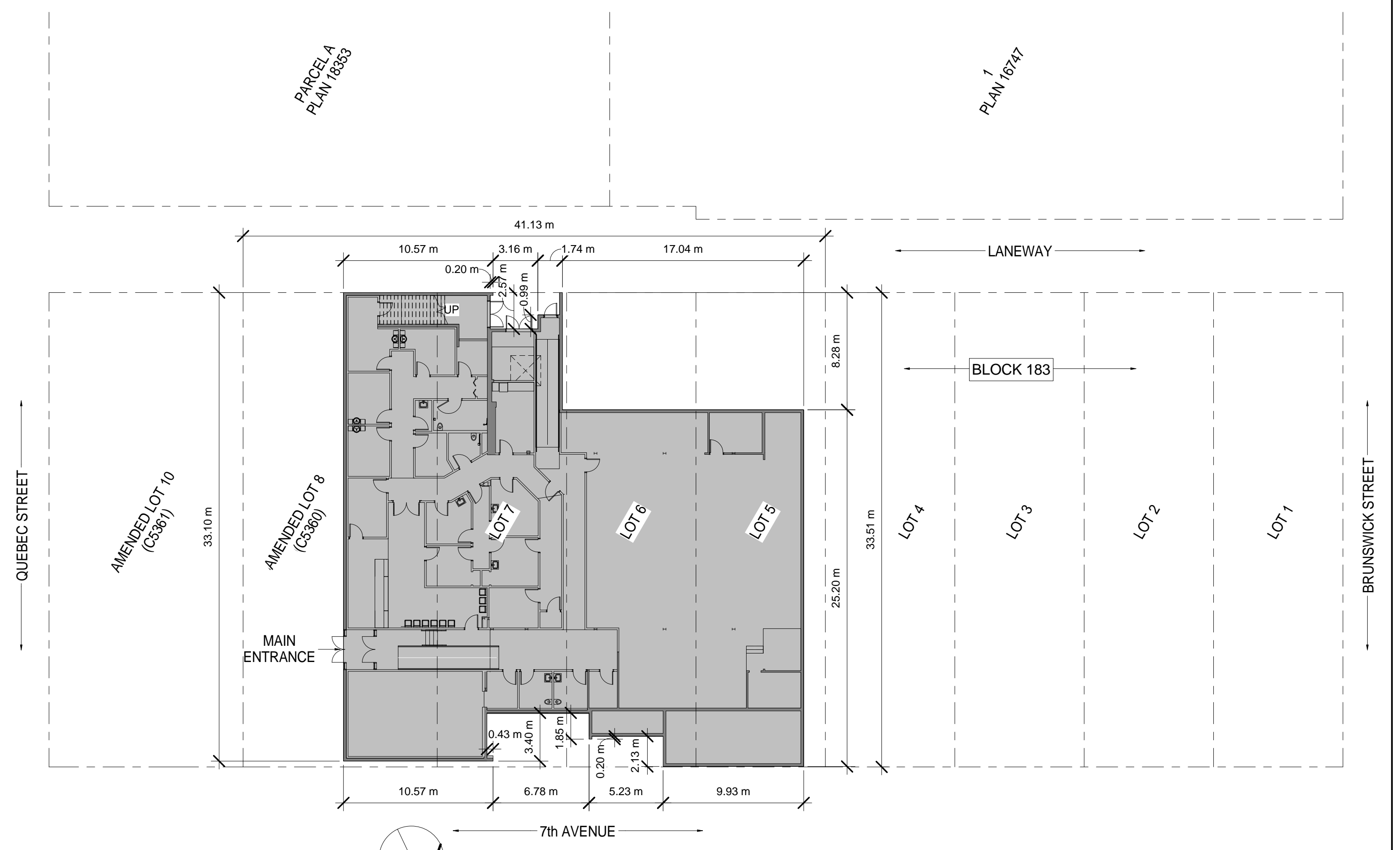
FIRE RESISTANCE RATING

3.6.2.1.(1) MECH. ROOM REQUIRES 1 HR. F.R.R. (SERVICE ROOM CONTAINING FUEL FIRED APPLIANCE)
3.3.1.21.2(a) JANITOR ROOM REQUIRES 45 MIN. F.R.R.
3.3.1.4.(2) PUBLIC CORRIDORS REQUIRES 45 MIN. F.R.R.

- CONSTRUCTION NOTES**
- THE CONTRACTOR SHALL VERIFY ALL DIMENSIONS AND EXISTING CONDITIONS AT THE SITE BEFORE COMMENCING WORK AND ORDERING MATERIALS. INFORM THE CONSULTANT OF ANY DISCREPANCIES / INCONSISTENCIES / UNKNOWN PRIOR TO COMMENCING WORK.
 - WORK DONE AS PER CONTRACT DRAWINGS SHALL CONFORM TO B.C. BUILDING CODE 2012 AND ALL PROVINCIAL & MUNICIPAL BYLAWS & CODES.
 - IT SHALL BE THE CONTRACTORS SOLE RESPONSIBILITY TO ENSURE PROPER SEQUENCE, COORDINATION AND PHASING OF CONSTRUCTION TO MEET CLIENT'S CONSTRUCTION COMPLETION DEADLINE.
 - ALL MATERIALS USED SHALL BE INSTALLED AND / OR APPLIED ACCORDING TO MANUFACTURERS RECOMMENDATIONS AND SPECIFICATIONS.
 - THE CONTRACTOR SHALL MAINTAIN AT HIS COST ALL NECESSARY INSURANCES AND INSURANCE ASKED FOR BY THE PROPRIETOR. THE PROPRIETOR SHALL INFORM HIS FIRE INSURANCE CO. OF WORK TO BE DONE.
 - INSTALL TEMPORARY DUSTPROOF PARTITIONS & ACCESS AROUND THE WORK AREA.
 - CARRY OUT ALL DEMOLITION NECESSARY TO COMPLETE THE WORKS. SUPPLY TEMPORARY SUPPORTS WHERE REQUIRED AS PER CODES & NORMS. REPAIR ADJACENT SURFACES.
 - FIRE RATINGS OF ALL EXISTING CONSTRUCTION TO BE MAINTAINED.
 - NEW PARTITIONS:** 5/8" GWB ON BOTH SIDES OF MET. STUDS 6" @ 16" O.C. UNLESS NOTED OTHERWISE.
 - EXISTING PARTITIONS:** REPAIR EXISTING GWB AND/OR STUDS TO RECEIVE GWB, GWB TO BE TAPED & SANDED AND PREPARED FOR PAINT FINISH. CONFIRM REQUIRED RATING.
 - WINDOW AND DOOR SIZES ARE NOTED AS WIDTH BY HEIGHT.
 - WINDOWS AND DOORS ARE NOTED AS NOMINAL SIZES, ROUGH OPENINGS TO BE CONFIRMED WITH WINDOW / DOOR MANUFACTURER REQUIREMENTS.
 - EXIT DOORS: ALL EXIT DOORS TO BE COMPLETE WITH REQUIRED EXIT DOOR HARDWARE AS PER RELEVANT BUILDING CODE. ALL NON-COMPLIANT DOOR HARDWARE TO BE REMOVED. ENSURE ALL DOOR RELEASE HARDWARE COMPLIES WITH 3.3.1.13(3) AND 3.3.1.13(10)(c) OF THE BRITISH COLUMBIA BUILDING CODE 2012.
 - PROVIDE BACKING IN STUD SPACE TO MECHANICALLY FASTEN WALL-MOUNTED ACCESSORIES, SHELVING & DISPLAY SYSTEMS TO SEISMIC AND STRUCTURAL REQUIREMENTS.
 - PROVIDE ALARM VERIFICATION FOR F/A ALTERATIONS.
 - GC TO PROVIDE ELECTRICAL PERMIT FOR ELECTRICAL WORK INDICATED ON DRAWINGS. SUBMIT COPY OF PERMIT & INSPECTION REPORTS TO CONSULTANTS FOR RECORD.
 - GC TO PROVIDE PLUMBING PERMIT FOR MECHANICAL & PLUMBING WORK. SUBMIT COPY OF PERMIT & INSPECTION REPORTS TO CONSULTANTS FOR RECORD.
 - WALL SHELVING AND WALL DISPLAY SYSTEMS SHALL BE CONSTRUCTED ON SEISMICALLY DESIGNED CONSTRUCTION. DO NOT CONSTRUCT ON EXISTING SEISMICALLY UNSUPPORTED CONSTRUCTION, INCLUDING CLAY TILE.
 - SEISMIC RESTRAINT** - PROVIDE PHOTOS FOR CONFIRMATION OF NON-STRUCTURAL SEISMIC RESTRAINT SUITABLE FOR LOCAL SEISMIC CONDITIONS FOR NON-STRUCTURAL ELEMENTS INCLUDING BACKING, WALL SHELVING, STEEL STUD & GWB PARTITIONS, SUSPENDED GWB & ACOUSTIC PANEL CEILINGS, ELECTRICAL SEISMIC, MECHANICAL SEISMIC.
 - DRAWING CONSULTANT & ARCHITECT TO BE NOTIFIED OF ANY / ALL MUNICIPALITY COMMENTS ON APPROVED PERMIT APPLICATION DRAWINGS AS SOON AS RECEIVED. SCANS / PHOTOS TO BE FORWARDED FOR REFERENCE.
 - STRUCTURAL, MECHANICAL AND / OR ELECTRICAL DRAWINGS TO BE PROVIDED BY TENANT AS REQUIRED BY THE CITY / MUNICIPALITY.
 - ALL DEMISING WALL FIRE SEPARATIONS TO BE CONFIRMED WITH THE BUILDING INSPECTOR. UPGRADES TO DEMISING WALLS TO BE DONE AT OWNER / LANDLORD EXPENSE.

RM #	RM NAME	OCCUPANCY	SQ FT	SQ M	MP / PERSON	OCCUPANT LOAD
100	VESTIBULE	-	59 ft ²	5.4 m ²		
101	ENTRANCE	-	243 ft ²	22.6 m ²		
101A	CORRIDOR	-	273 ft ²	25.3 m ²		
102	BOARD ROOM	OFFICE	616 ft ²	57.2 m ²	9.30	6
102A	VESTIBULE	-	63 ft ²	5.9 m ²		
103	FUTURE W.C.	-	65 ft ²	6.0 m ²		
103A	FUTURE W.C.	-	67 ft ²	6.2 m ²		
104	JANITOR	CLEANING & REPAIR	56 ft ²	5.2 m ²	4.60	1
105	WAITING AREA	OFFICE	375 ft ²	34.8 m ²	9.30	4
105A	RECEPTION	OFFICE	192 ft ²	17.8 m ²	9.30	2
106	OFFICE	OFFICE	104 ft ²	9.7 m ²	9.30	1
107	OFFICE	OFFICE	122 ft ²	11.3 m ²	9.30	1
108	EXAM RM	OFFICE	104 ft ²	9.7 m ²	9.30	1
109	CORRIDOR	-	216 ft ²	20.1 m ²		
109A	-	-	132 ft ²	12.2 m ²		
110	CORR.	-	223 ft ²	20.7 m ²		
111	FACIAL	PERSONAL SERVICES	113 ft ²	10.5 m ²	4.60	2
112	DUAL PEDI RM	PERSONAL SERVICES	115 ft ²	10.7 m ²	4.60	2
113	HAIR	PERSONAL SERVICES	154 ft ²	14.4 m ²	4.60	3
113A	CLOSET	STORAGE	34 ft ²	3.2 m ²	46.00	0
114	MASSAGE	PERSONAL SERVICES	115 ft ²	10.7 m ²	4.60	2
115	LAUNDRY	CLEANING & REPAIR	55 ft ²	5.1 m ²	4.60	1
116	CLOSET	STORAGE	12 ft ²	1.1 m ²	46.00	0
117	HC STEAM SHOWER	-	87 ft ²	8.1 m ²		
118	SOILED LAUNDRY	STORAGE	27 ft ²	2.5 m ²	46.00	0
119	CLEAN STORAGE	STORAGE	76 ft ²	7.0 m ²	46.00	0
120	HC WC	-	51 ft ²	4.8 m ²		
121	LUNCH ROOM	KITCHEN	149 ft ²	13.8 m ²	9.30	1
122	EXAM RM	OFFICE	130 ft ²	12.1 m ²	9.30	1
123	PHOTO STUDIO	OFFICE	74 ft ²	6.9 m ²	9.30	1
124	EXAM RM	OFFICE	130 ft ²	12.1 m ²	9.30	1
125	OFFICE	OFFICE	106 ft ²	9.9 m ²	9.30	1
126	CLOSET	STORAGE	19 ft ²	1.7 m ²	46.00	0
127	CORR.	-	223 ft ²	20.7 m ²		
128	CORR. / RAMP	-	188 ft ²	17.5 m ²		
129	MECHANICAL	-	110 ft ²	10.2 m ²		
130	ELECTRICAL	-	113 ft ²	10.5 m ²		
131	FUTURE TENANT	PERSONAL SERVICES	3179 ft ²	295.3 m ²	4.60	64

TOTAL OCCUPANT LOAD: ~~98 PEOPLE~~
95 PEOPLE



1 SITE / KEY PLAN
A-001 SCALE - 1" = 20'-0"

DRAWING LIST

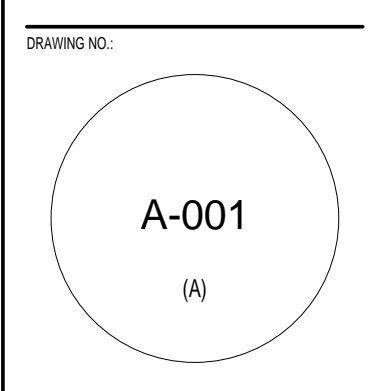
SHEET #	SHEET NAME
A-001	GENERAL NOTES & SITE PLAN
A-101	CONSTRUCTION NOTES
A-102	REFLECTED CEILING PLAN
A-301	SECTIONS
A-401	LARGE SCALE PLANS
A-501	WALL AND CEILING DETAILS
A-502	OUTLINE SPECIFICATIONS

- REVISIONS**
- ISSUED FOR OWNER REVIEW MAY 28, 2013
 - ISSUED FOR OWNER REVIEW JUNE 05, 2013
 - ISSUED FOR OWNER REVIEW JUNE 07, 2013
 - ISSUED FOR OWNER REVIEW JUNE 10, 2013
 - ISSUED FOR BP, PRICING JULY 25, 2013

DATE: 30 APR 13
JOB NO.: 2013-100
SCALE: As indicated
DRAWN BY: PAR
CHECKED BY: JMH
PROJECT TITLE:

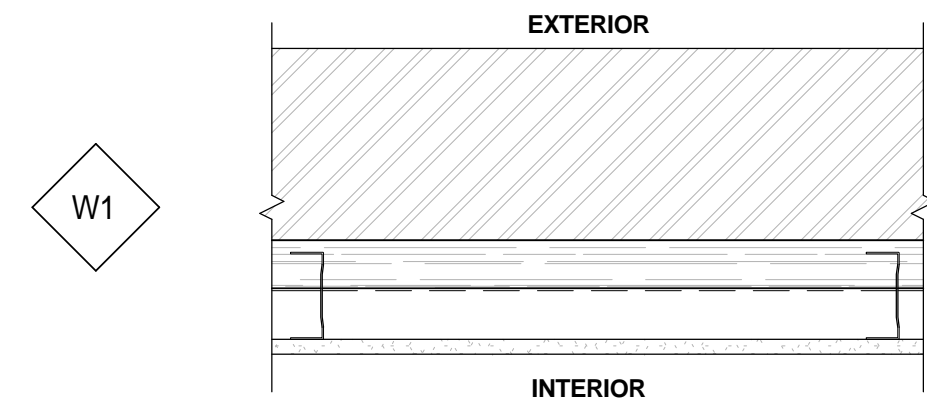
MEDICAL CENTRE
1335 7th Avenue,
Prince George,
BC, V2L 3N9

SHEET TITLE:
GENERAL NOTES & SITE PLAN



COLIN W. CRAIG ARCHITECTURE 201 2455 DOLLARTON HIGHWAY NORTH VANCOUVER BC V7H 0A2 (604) 985 6626

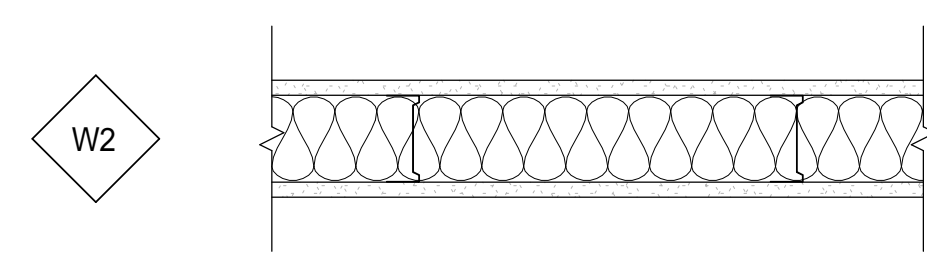
EXTERIOR WALL ASSEMBLY



**EXISTING MASONRY
NO F.R.R. / LOADBEARING**

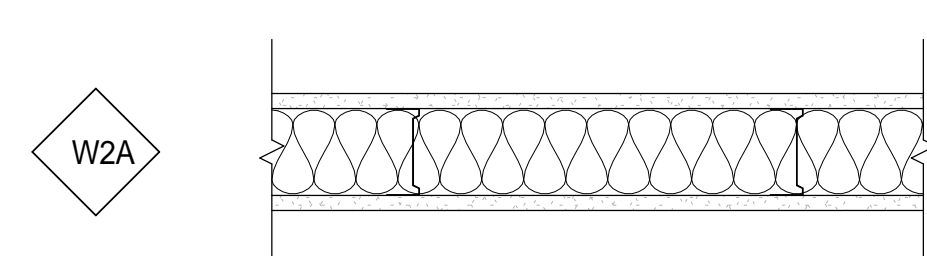
- EXISTING MASONRY WALL / CMU
 - 2" SPRAYED POLYURETHANE FOAM (SPF) INSULATION
 - 3/5" STEEL STUDS FULL HEIGHT @ 24" O.C.
 - OFFSET 1/2" FROM EXTERIOR WALL
 - BACKING FOR WALL-MOUNTED EQUIPMENT AND FIXTURES, AS INDICATED ON PLANS AND INTERIOR ELEVATIONS
 - 5/8" GWB W/ INTERIOR PAINT FINISH
- (APPROX. THERMAL RESISTANCE OF R12)

INTERIOR WALL ASSEMBLIES



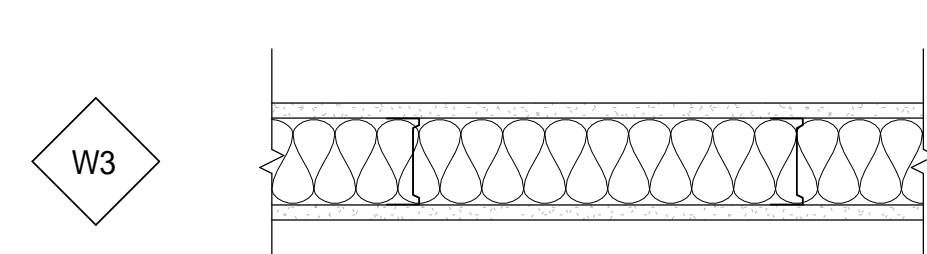
**INTERIOR PARTITION
F.R.R. 45 MINS / NON-LOADBEARING / STC: 48 / BCBC: S4a**

- 5/8" TYPE 'X' GWB TAPED AND FILLED, FINISH LEVEL 4
 - 1 1/4" x 3 5/8" STEEL STUDS FULL HEIGHT @ 16" O.C. C/W
 - 3 1/2" GLASS FIBRE ACOUSTIC BATT INSULATION
 - 5/8" TYPE 'X' GWB TAPED AND FILLED, FINISH LEVEL 4
- (RATED PARTITIONS TO EXTEND TO U/S OF FLOOR DECK)



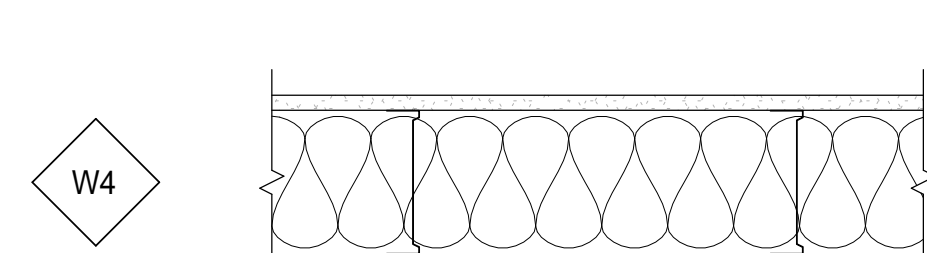
**INTERIOR PARTITION F.R.R. 1 HOUR
F.R.R. 45 MINS / NON-LOADBEARING / STC: 48 / BCBC: S4a**

- AROUND MECHANICAL ROOM
- SAME AS ABOVE BUT WITH 3 1/2" BATT MINERAL WOOL AND MASS OF AT LEAST 2.8 kg PER SQUARE METER



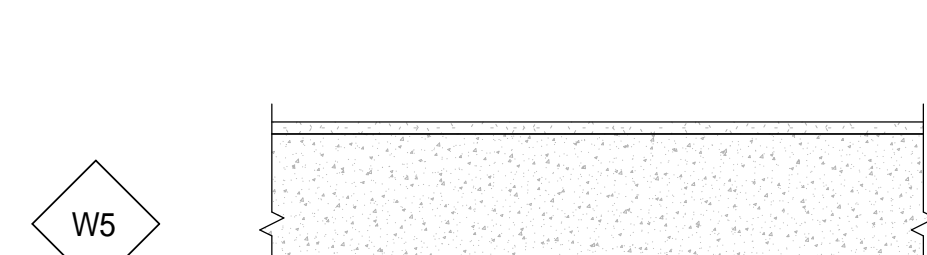
**INTERIOR PARTITION
NO F.R.R. / NON-LOADBEARING / STC: 48 / BCBC: S4a (SIMILIAR, NO F.R.R.)**

- 5/8" GWB TAPED AND FILLED, FINISH LEVEL 4
- 1 1/4" x 3 5/8" STEEL STUDS FULL HEIGHT @ 16" O.C.
- C/W 3 1/2" GLASS FIBRE ACOUSTIC BATT INSULATION
- 5/8" GWB TAPED AND FILLED, FINISH LEVEL 4



**INTERIOR PARTITION - PLUMBING WALL
NO F.R.R. / NON-LOADBEARING / STC: 51 / BCBC: S7 (SIMILIAR, NO F.R.R.)**

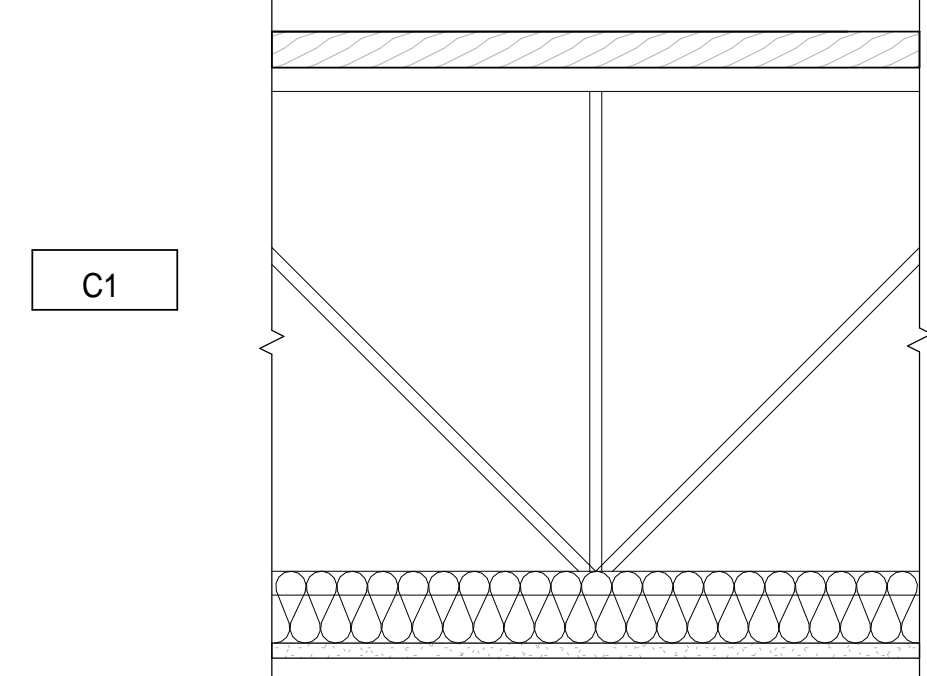
- 5/8" GWB TAPED AND FILLED, FINISH LEVEL 4
- 1 1/4" x 6" STEEL STUDS FULL HEIGHT @ 16" O.C.
- C/W 5 1/2" GLASS FIBRE ACOUSTIC BATT INSULATION
- 5/8" GWB TAPED AND FILLED, FINISH LEVEL 4



**INTERIOR PARTITION
NO F.R.R., LOAD BEARING**

- EXISTING MASONRY WALL OR CMU
- 5/8" GWB TAPED AND FILLED, FINISH LEVEL 4

CEILING ASSEMBLY



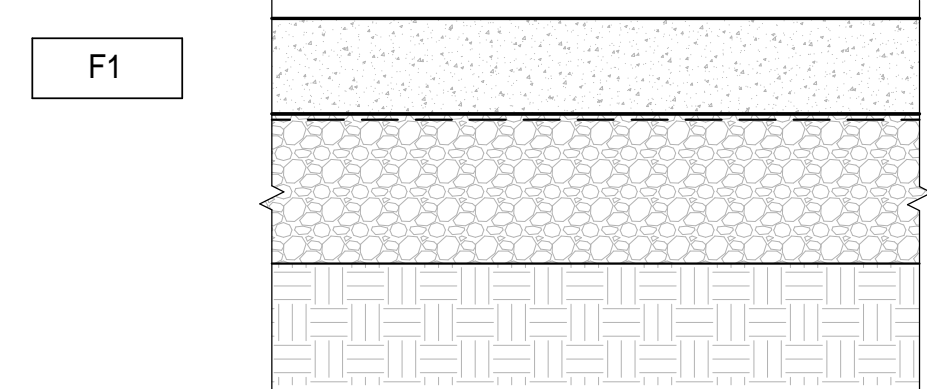
CEILING ASSEMBLY

- 45 MIN. F.R.R.
- BCBC DIVISION B APPENDIX D

- EXISTING 1/2" PLYWOOD SUBFLOOR (FROM ORIGINAL CONST. DWGS.)
- EXISTING 2" FIR T+G DESKING (FROM ORIGINAL CONST. DWGS.)
- EXISTING open web steel joists (from original construction drawings)
- NEW 3" SCOUTIC BATT MINERAL WOOL
- NEW STEEL FURRING CHANNELS AT 16" O.C. (10 MIN. F.R.R., TABLE D-2.3.4.C)
- NEW 5/8" GWB TAPED AND FINISHED (40 MIN. F.R.R., TABLE D-2.3.4.A)
- NEW GWB BULKHEAD OR SUSPENDED T+BAR CEILING AS INDICATED ON REFLECTED CEILING PLAN AND ROOM SCHEDULE
- * RATED CEILING MEMBRANE TO EXTEND TO INSIDE FACE OF CONCRETE OF THE EXTERIOR WALL, OR TO RATED INTERIOR PARTITION.

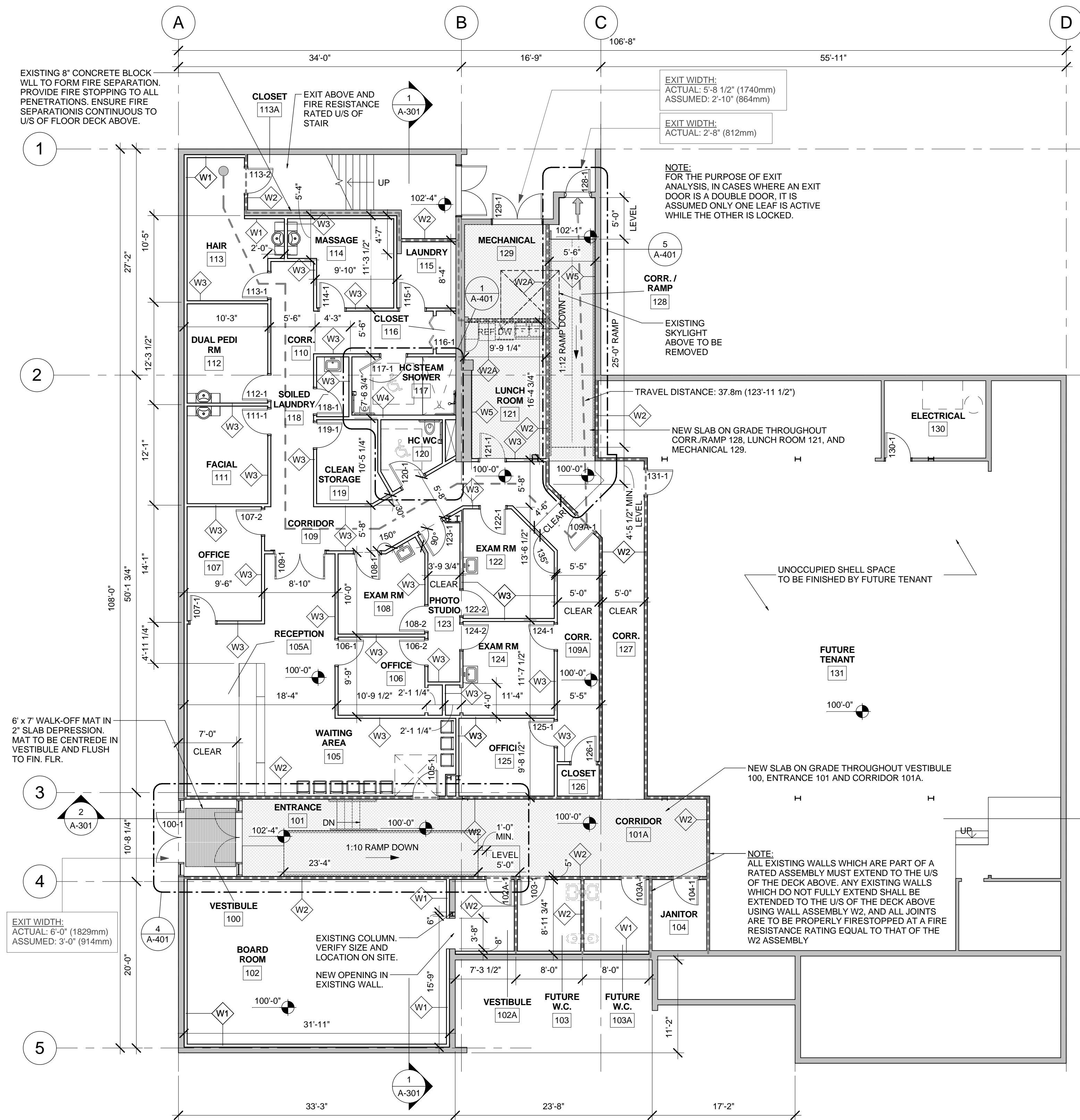
5/8" TYPE 'X' GWB

FLOOR ASSEMBLY



GROUND FLOOR ASSEMBLY - CONCRETE SLAB ON GRADE

- FLOOR FINISH AS SPECIFIED
- 4" CONCRETE SLAB ON GRADE
- 6 mil SHEET POLYETHYLENE
- 6" COMPACTED GRANULAR FILL
- COMPACTED NON-ORGANIC SUB-GRADE



1 CONSTRUCTION PLAN
SCALE: 1/8" = 1'-0"

LEGEND

- EXISTING MASONRY WALL
- NEW STEEL STUD WALL
- FIRE SEPARATION

ALL DRAWINGS AND RELATED DOCUMENTS ARE THE COPYRIGHT OF COLIN W. CRAIG ARCHITECTURE AND MUST BE RETURNED UPON REQUEST. REPRODUCTION OF DRAWINGS AND RELATED DOCUMENTS IN WHOLE OR IN PART IS FORBIDDEN WITHOUT THE ARCHITECT'S WRITTEN PERMISSION. WRITTEN DIMENSIONS SHALL HAVE PRECEDENCE OVER SCALE DIMENSIONS. CONTRACTOR SHALL SPECIFY AND BE RESPONSIBLE FOR ALL DIMENSIONS AND CONDITIONS ON THE JOB. IN THE EVENT THAT ANY DISCREPANCY APPEARS BETWEEN THE DRAWING AND SPECIFICATIONS OR ANY OF THE CONTRACT DOCUMENTS, THE CONTRACTOR SHALL IMMEDIATELY BRING SAME TO ARCHITECT'S ATTENTION. PROVIDED THAT IN THE EVENT THAT SUCH DISCREPANCIES ARE NOT OBSERVED, THE SPECIFICATION SHALL TAKE PRECEDENCE OVER THE DRAWING.

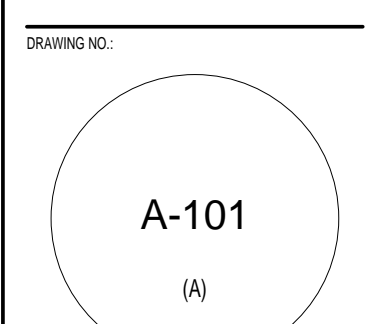
REVISIONS

- ISSUED FOR OWNER REVIEW MAY 28, 2013
- ISSUED FOR OWNER REVIEW JUNE 05, 2013
- ISSUED FOR OWNER REVIEW JUNE 07, 2013
- ISSUED FOR OWNER REVIEW JUNE 10, 2013
- ISSUED FOR BP, PRICING JULY 25, 2013

DATE: 04/30/13
JOB NO.: 2013-100
SCALE: As indicated
DRAWN BY: PAR
CHECKED BY: JMH
PROJECT TITLE:

MEDICAL CENTRE
1335 7th Avenue,
Prince George,
BC, V2L 3N9

SHEET TITLE:
CONSTRUCTION PLAN



COLIN W. CRAIG ARCHITECTURE 201 2455 DOLLARTON HIGHWAY NORTH VANCOUVER BC V7H 0A2 (604) 985 6626

ALL DRAWINGS AND RELATED DOCUMENTS ARE THE COPYRIGHT OF COLIN W. CRAIG ARCHITECTURE AND MUST BE RETURNED UPON REQUEST. REPRODUCTIONS OF DRAWINGS AND RELATED DOCUMENTS IN WHOLE OR IN PART IS FORBIDDEN WITHOUT THE ARCHITECT'S WRITTEN PERMISSION. WRITTEN DIMENSIONS SHALL HAVE PRECEDENCE OVER SCALED DIMENSIONS. CONTRACTOR SHALL VERIFY AND BE RESPONSIBLE FOR ALL DIMENSIONS AND CONDITIONS ON THE JOB. IN THE EVENT THAT ANY DISCREPANCY APPEARS BETWEEN THE DRAWING AND SPECIFICATIONS OR ANY OF THE CONTRACT DOCUMENTS, THE CONTRACTOR SHALL IMMEDIATELY BRING SAME TO ARCHITECT'S ATTENTION. PROVIDED THAT IN THE EVENT THAT SUCH DISCREPANCIES ARE NOT OBSERVED, THE SPECIFICATION SHALL TAKE PRECEDENCE OVER THE DRAWINGS.

REVISIONS	
1.	ISSUED FOR OWNER REVIEW MAY 28, 2013
2.	ISSUED FOR OWNER REVIEW JUNE 05, 2013
3.	ISSUED FOR OWNER REVIEW JUNE 07, 2013
4.	ISSUED FOR OWNER REVIEW JUNE 10, 2013
5.	ISSUED FOR BP, PRICING JULY 25, 2013

DATE:	04/30/13
JOB NO.:	2013-100
SCALE:	1/8" = 1'-0"
DRAWN BY:	PAR
CHECKED BY:	JMH
PROJECT TITLE:	

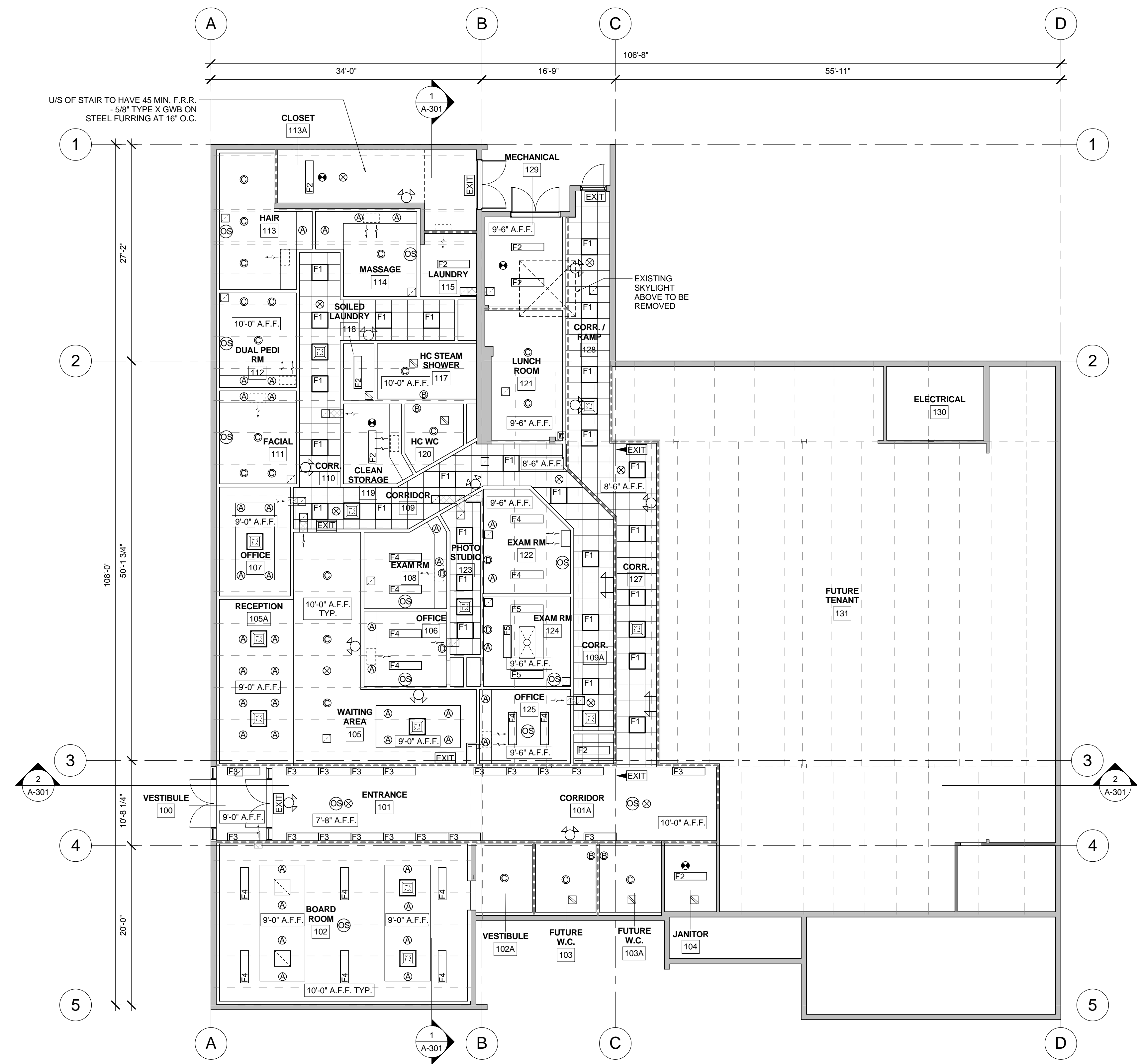
MEDICAL CENTRE
1335 7th Avenue,
Prince George,
BC, V2L 3N9

SHEET TITLE:
REFLECTED CEILING PLAN

DRAWING NO.:

A-102
(A)

COLIN W. CRAIG ARCHITECTURE 201 2455 DOLLARTON HIGHWAY NORTH VANCOUVER BC V7H 0A2 (604) 985 6626

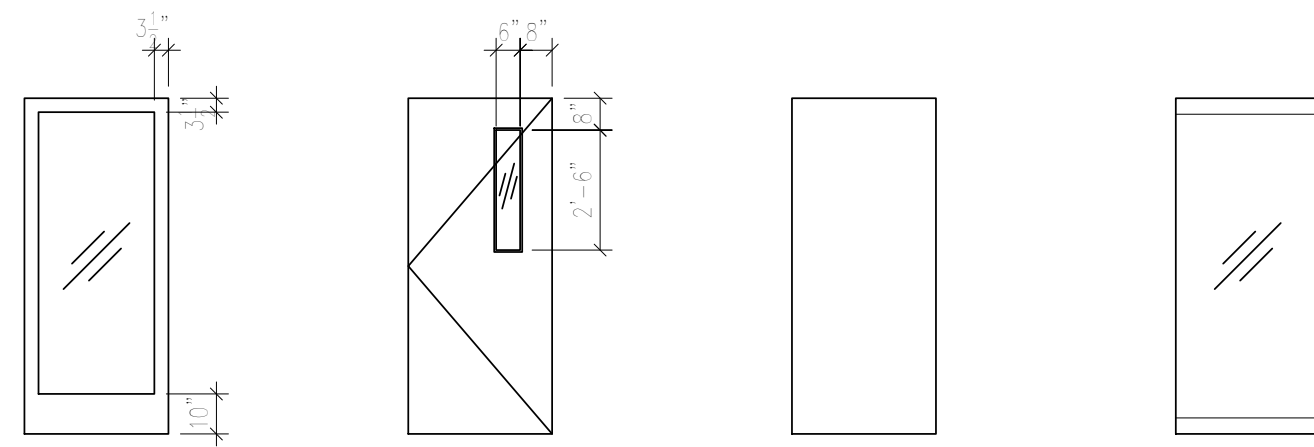


U/S OF STAIR TO HAVE 45 MIN. F.R.R. - 5/8" TYPE X GWB ON STEEL FURRING AT 16" O.C.

1 LOWER FLOOR REFLECTED CEILING PLAN
A-102 SCALE: 1/8" = 1'-0"

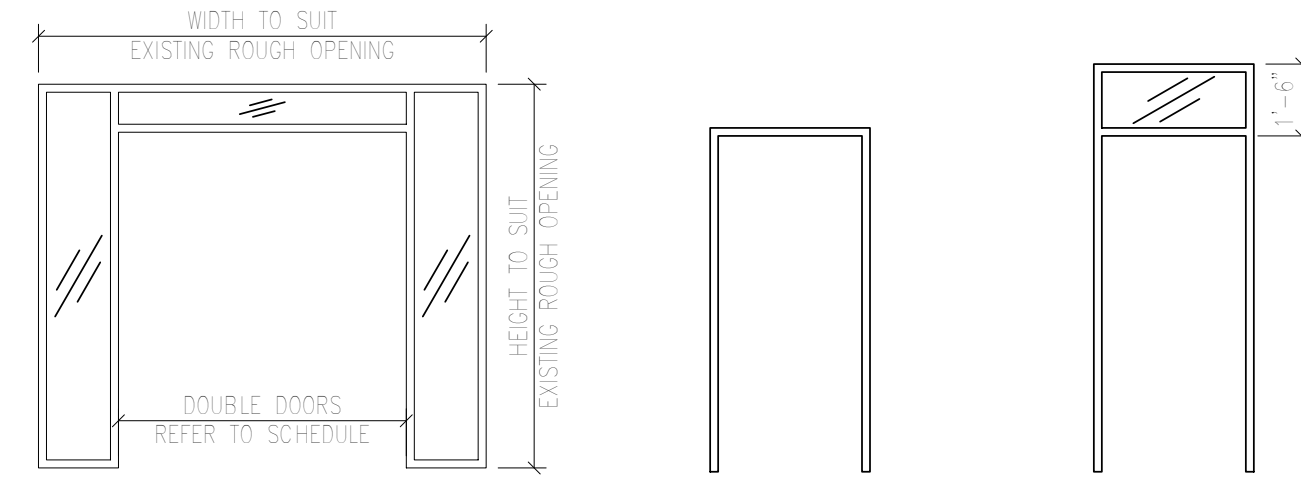
- NOTE:**
- SUSPENDED T-BAR CEILINGS W/ 24" x 24" GRID AND CEILING TILES TO BE INSTALLED IN CORRIDORS. DRYWALL CEILINGS TO BE PROVIDED IN ROOMS.
 - ALL GWB CEILINGS AT 10'-0" A.F.F. UNLESS OTHERWISE NOTED.
 - ALL 24" X 24" SUSPENDED T-BAR CEILINGS AT 8'-6" A.F.F. UNLESS OTHERWISE NOTED.
 - ALL BULKHEADS EAST OF G.L. B AT 8'-6" A.F.F. TYP.
 - ALL FIXTURES IN T-BAR CEILING TO BE CENTRED IN TILES.

DOOR TYPES



- TYPE A FULL GLASS DOOR**
 - A-1 EXTERIOR ENTRY DOOR, CLEAR ANODIZED ALUMINUM, MEDIUM STILES, 10" BOTTOM RAIL, CLEAR DOUBLE GLAZED SAFETY GLASS
 - A-2 INTERIOR DOOR, SOLID WOOD DOOR, CLEAR SINGLE GLAZED SAFETY GLASS
- TYPE B NARROW LITE DOOR**
 - B-1 20 MINUTE F.R.R., SOLID CORE WOOD DOOR, WOOD VENEER, STAIN FINISH, GEORGIAN WIRED GLASS OR RATED GLASS
- TYPE C GLASS DOOR**
 - C-1 SOLID CORE WOOD DOOR, WOOD VENEER, STAIN FINISH
 - C-2 HOLLOW METAL DOOR, NO F.F.R.
 - C-3 HOLLOW METAL DOOR, 20 MINUTE F.R.R.
 - C-4 HOLLOW METAL DOOR, 45 MINUTE F.R.R.
 - C-5 BIFOLD CLOSET DOOR
- TYPE D TOP AND BOTTOM RAIL SAFETY GLASS**
 - D-1 EXTERIOR DOOR FRAME, CLEAR ANODIZED ALUMINUM, THERMALLY BROKEN, CLEAR DOUBLE GLAZING SAFETY GLASS
 - D-2 INTERIOR DOOR FRAME, SOLID WOOD, CLEAR SINGLE GLAZING SAFETY GLASS

FRAME TYPES



- TYPE 1 ENTRANCE DOUBLE DOOR**
 - 1-1 EXTERIOR DOOR FRAME, CLEAR ANODIZED ALUMINUM, THERMALLY BROKEN, CLEAR DOUBLE GLAZING SAFETY GLASS
 - 1-2 INTERIOR DOOR FRAME, SOLID WOOD, CLEAR SINGLE GLAZING SAFETY GLASS
- TYPE 2 SOLID WOOD FRAME TAG JOINTS**
 - 2-1 SOLID WOOD FRAME, TAG JOINTS
 - 2-2 PRESSED STEEL FRAME, NO F.F.R.
 - 2-3 PRESSED STEEL FRAME, 20 MINUTE F.R.R.
 - 2-4 PRESSED STEEL FRAME, 45 MINUTE F.R.R.
- TYPE 3 TRANSOM FRAME**
 - 3-1 PRESSED STEEL FRAME, 20 MINUTE F.R.R., SINGLE GLAZING, GEORGIAN WIRED GLASS OR RATED GLAZING

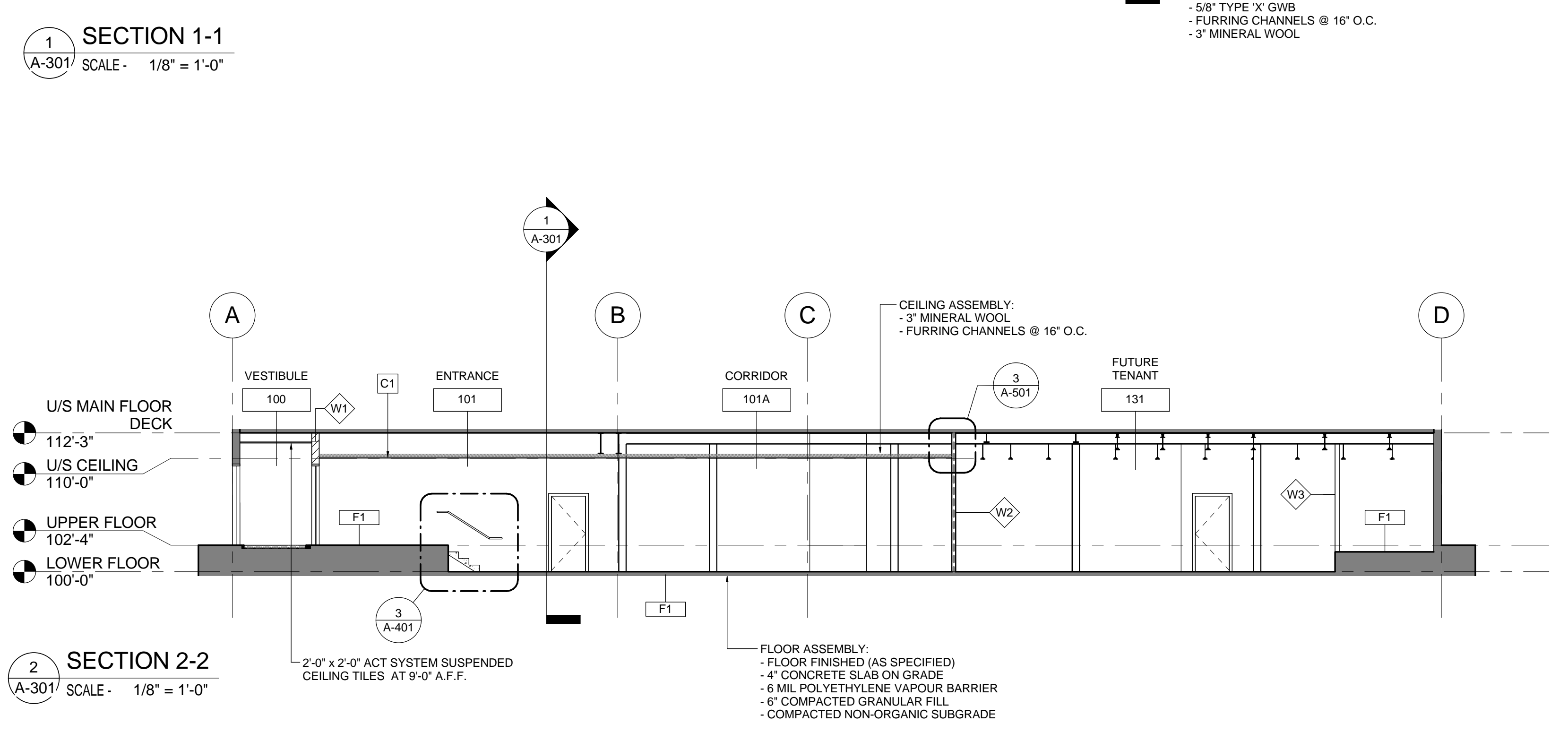
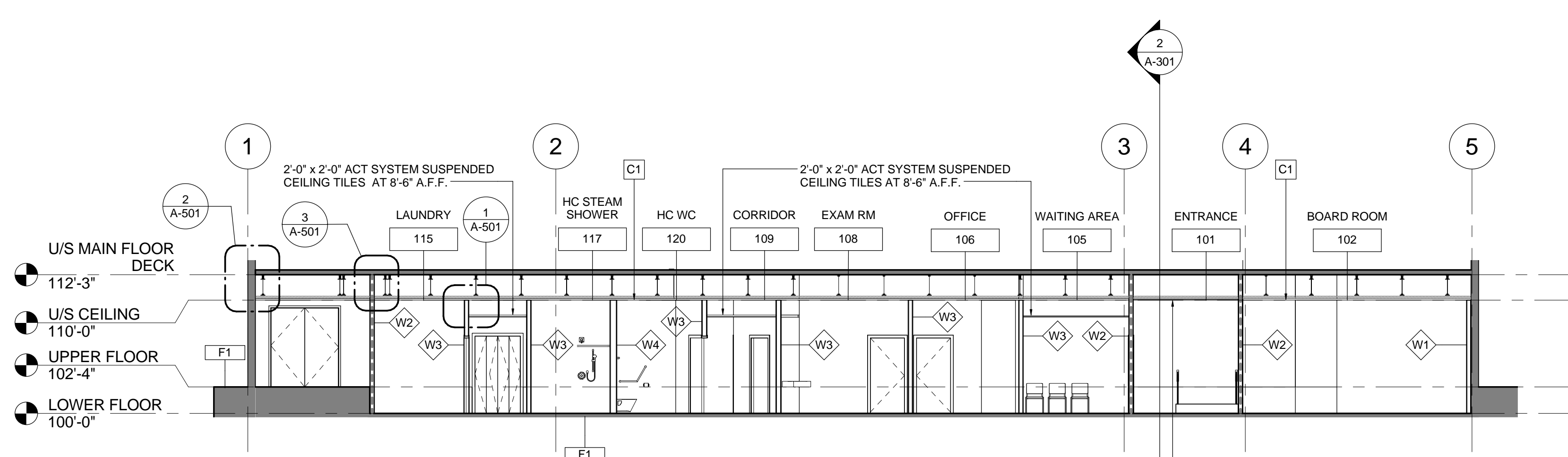
No.	Room	Material	Base	WALLS						CEILING		REMARKS	
				North	East	South	West	Material	Finish	Height			
100	VESTIBULE	RSP	RCB	GWB	PNT	GWB	PNT	GWB	PNT	GWB	PNT	7'-0"	raised floor area
101	ENTRANCE	RSP	RCB	GWB	PNT	GWB	PNT	GWB	PNT	GWB	PNT	7'-0"/10'-0"	raised floor area
101A	CORRIDOR	RSP	RCB	GWB	PNT	GWB	PNT	GWB	PNT	GWB	PNT	10'-0"	bulkhead at 9'-0", below rated ceiling GWB membrane
102	BOARD ROOM	RSP	RCB	GWB	PNT	GWB	PNT	GWB	PNT	GWB	PNT	10'-0"	bulkhead at 9'-0", below rated ceiling GWB membrane
102A	VESTIBULE	RSP	RCB	GWB	PNT	GWB	PNT	GWB	PNT	GWB	PNT	10'-0"	bulkhead at 9'-0", below rated ceiling GWB membrane
103	FUTURE W.C.	RSP	ICB	GWB	PNT	GWB	PNT	GWB	PNT	GWB	PNT	10'-0"	provide moisture resistant GWB behind sink and toilet
103A	FUTURE W.C.	RSP	ICB	GWB	PNT	GWB	PNT	GWB	PNT	GWB	PNT	10'-0"	provide moisture resistant GWB behind sink and toilet
104	JANITOR	EXIST	EXIST	GWB	PNT	GWB	PNT	GWB	PNT	GWB	PNT	10'-0"	bulkhead at 9'-0", below rated ceiling GWB membrane
105	WAITING AREA	RSP	RCB	GWB	PNT	GWB	PNT	GWB	PNT	GWB	PNT	10'-0"	bulkhead at 9'-0", below rated ceiling GWB membrane
105A	RECEPTION	RSP	RCB	GWB	PNT	GWB	PNT	GWB	PNT	GWB	PNT	10'-0"	bulkhead at 9'-0", below rated ceiling GWB membrane
106	OFFICE	RSP	RCB	GWB	PNT	GWB	PNT	GWB	PNT	GWB	PNT	10'-0"	bulkhead at 9'-0", below rated ceiling GWB membrane
107	OFFICE	RSP	RCB	GWB	PNT	GWB	PNT	GWB	PNT	GWB	PNT	10'-0"	bulkhead at 9'-0", below rated ceiling GWB membrane
108	EXAM ROOM	RSP	RCB	GWB	PNT	GWB	PNT	GWB	PNT	GWB	PNT	10'-0"	bulkhead at 9'-0", below rated ceiling GWB membrane
109	CORRIDOR	RSP	RCB	GWB	PNT	GWB	PNT	GWB	PNT	GWB	PNT	10'-0"	bulkhead at 9'-0", below rated ceiling GWB membrane
109A	CORRIDOR	RSP	RCB	GWB	PNT	GWB	PNT	GWB	PNT	GWB	PNT	10'-0"	bulkhead at 9'-0", below rated ceiling GWB membrane
111	FACIAL	RSP	RCB	GWB	PNT	GWB	PNT	GWB	PNT	GWB	PNT	10'-0"	bulkhead at 9'-0", below rated ceiling GWB membrane
112	DUAL PEDI RM	RSP	RCB	GWB	PNT	GWB	PNT	GWB	PNT	GWB	PNT	10'-0"	bulkhead at 9'-0", below rated ceiling GWB membrane
113	HAIR	RSP	RCB	GWB	PNT	GWB	PNT	GWB	PNT	GWB	PNT	10'-0"	bulkhead at 9'-0", below rated ceiling GWB membrane
113A	CLOSET	RSP	RCB	GWB	PNT	GWB	PNT	GWB	PNT	GWB	PNT	10'-0"	underside of stair to be fire separation with 45 min. F.R.R.
114	MASSAGE	RSP	RCB	GWB	PNT	GWB	PNT	GWB	PNT	GWB	PNT	10'-0"	bulkhead at 9'-0", below rated ceiling GWB membrane
115	LAUNDRY	RSP	RCB	GWB	PNT	GWB	PNT	GWB	PNT	GWB	PNT	10'-0"	bulkhead at 9'-0", below rated ceiling GWB membrane
116	CLOSET	RSP	RCB	GWB	PNT	GWB	PNT	GWB	PNT	GWB	PNT	10'-0"	bulkhead at 9'-0", below rated ceiling GWB membrane
117	STEAM SHOWER	RSP	RCB	CT/GWB	-/PNT	CT/GWB	-/PNT	CT/GWB	-/PNT	CT/GWB	-/PNT	10'-0"	provide concrete backer board and wall tie in shower area, provide wall tile and moisture resistant GWB behind sink and toilet
118	SOILED LAUNDRY	RSP	RCB	GWB	PNT	GWB	PNT	GWB	PNT	GWB	PNT	10'-0"	bulkhead at 9'-0", below rated ceiling GWB membrane
119	CLEAN STORAGE	RSP	RCB	GWB	PNT	GWB	PNT	GWB	PNT	GWB	PNT	10'-0"	bulkhead at 9'-0", below rated ceiling GWB membrane
120	H.C. W.C.	RSP	RCB	GWB	PNT	GWB	PNT	GWB	PNT	GWB	PNT	10'-0"	provide wall tile and moisture resistant GWB behind sink and toilet to 3'-4" high
121	LUNCH ROOM	RSP	RCB	GWB	PNT	GWB	PNT	GWB	PNT	GWB	PNT	9'-6"	bulkhead at 9'-0", below rated ceiling GWB membrane
122	EXAM ROOM	RSP	RCB	GWB	PNT	GWB	PNT	GWB	PNT	GWB	PNT	9'-6"	bulkhead at 9'-0", below rated ceiling GWB membrane
123	PHOTO STUDIO	RSP	RCB	GWB	PNT	GWB	PNT	GWB	PNT	GWB	PNT	9'-6"	bulkhead at 9'-0", below rated ceiling GWB membrane
124	EXAM ROOM	RSP	RCB	GWB	PNT	GWB	PNT	GWB	PNT	GWB	PNT	9'-6"	bulkhead at 9'-0", below rated ceiling GWB membrane
125	OFFICE	RSP	RCB	GWB	PNT	GWB	PNT	GWB	PNT	GWB	PNT	9'-6"	bulkhead at 9'-0", below rated ceiling GWB membrane
126	CLOSET	RSP	RCB	GWB	PNT	GWB	PNT	GWB	PNT	GWB	PNT	9'-6"	bulkhead at 9'-0", below rated ceiling GWB membrane
127	CORRIDOR	RSP	RCB	GWB	PNT	GWB	PNT	GWB	PNT	GWB	PNT	9'-6"	bulkhead at 9'-0", below rated ceiling GWB membrane
128	CORRIDOR/RAMP	RSP	RCB	GWB	PNT	GWB	PNT	GWB	PNT	GWB	PNT	9'-6"	bulkhead at 9'-0", below rated ceiling GWB membrane
129	MECHANICAL	RSP	RCB	GWB	PNT	GWB	PNT	GWB	PNT	GWB	PNT	9'-6"	bulkhead at 9'-0", below rated ceiling GWB membrane
130	ELECTRICAL	EXIST	NONE	GWB	PNT	GWB	PNT	GWB	PNT	GWB	PNT	9'-6"	bulkhead at 9'-0", below rated ceiling GWB membrane
131	FUTURE TENANT	EXIST	NONE	GWB	PNT	GWB	PNT	GWB	PNT	GWB	PNT	9'-6"	unfinished space for future tenant

CT CERAMIC TILE
 GWB GYPSUM WALL BOARD
 ICB INTEGRAL COVE BASE
 PNT PAINT
 RCB RUBBER COVE BASE
 RSP RESILIENT SHEET FLOORING
 SUSPENDED T-BAR CEILING

No.	Room	DOOR				FRAME			HARDWARE SET	FIRE RATING	REMARKS		
		Type	Material	Finish	Glazing	Width	Height	Thick.					
100-1	VESTIBULE	2 X A-1	ALUM	ANOD	SAFETY	2 X 3'-0"	7'-0"	1 3/4"	1-1	ALUM ANOD	1	-	no panic hldwr required, frame thermally broken, power operation
101-1	ENTRANCE	2 X A-2	WOOD	STAIN	SAFETY	2 X 3'-0"	7'-0"	1 3/4"	1-2	WOOD STAIN	2	-	no panic hldwr required, power operation, kickplate
102A-1	VESTIBULE	B-1	WOOD	STAIN	RATED	3'-0"	7'-0"	1 3/4"	3-1	PS PAINT	3	20 minute	door closer, kickplate
103-1	FUTURE W.C.	C-1	WOOD	STAIN	-	3'-0"	7'-0"	1 3/4"	2-3	PS PAINT	4	20 minute	undercut door, door closer, kickplate
103A-1	FUTURE W.C.	C-1	WOOD	STAIN	-	3'-0"	7'-0"	1 3/4"	2-3	PS PAINT	4	20 minute	undercut door, door closer, kickplate
104-1	JANITOR	C-4	METAL	PAINT	-	3'-0"	7'-0"	1 3/4"	2-4	PS PAINT	5	45 minute	undercut door, door closer, kickplate
105-1	WAITING AREA	B-1	WOOD	STAIN	RATED	3'-0"	7'-0"	1 3/4"	3-1	PS PAINT	3	20 minute	door closer, kickplate
106-1	OFFICE	C-1	WOOD	STAIN	-	3'-0"	7'-0"	1 3/4"	2-1	WOOD STAIN	6	-	-
106-2	OFFICE	C-1	WOOD	STAIN	-	3'-0"	7'-0"	1 3/4"	2-1	WOOD STAIN	6	-	-
107-1	OFFICE	C-1	WOOD	STAIN	-	3'-0"	7'-0"	1 3/4"	2-1	WOOD STAIN	6	-	-
107-2	OFFICE	C-1	WOOD	STAIN	-	3'-0"	7'-0"	1 3/4"	2-1	WOOD STAIN	6	-	-
108-1	EXAM ROOM	C-1	WOOD	STAIN	-	3'-0"	7'-0"	1 3/4"	2-1	WOOD STAIN	7	-	-
108-2	EXAM ROOM	C-1	WOOD	STAIN	-	3'-0"	7'-0"	1 3/4"	2-1	WOOD STAIN	7	-	-
109-1	CORRIDOR	2 X D-1	GLASS	-	SAFETY	2 X 3'-0"	7'-0"	1 3/4"	?	?	8	-	pull hardware
109A-1	CORRIDOR	C-3	METAL	PAINT	-	3'-0"	7'-0"	1 3/4"	2-3	PS PAINT	3	20 minute	door closer, kickplate
111-1	FACIAL	C-1	WOOD	STAIN	-	3'-0"	7'-0"	1 3/4"	2-1	WOOD STAIN	7	-	-
112-1	DUAL PEDI RM	C-1	WOOD	STAIN	-	3'-0"	7'-0"	1 3/4"	2-1	WOOD STAIN	7	-	-
113-1	HAIR	C-1	WOOD	STAIN	-	3'-0"	7'-0"	1 3/4"	2-1	WOOD STAIN	7	-	-
113A-1	CLOSET	C-4	METAL	PAINT	-	3'-0"	7'-0"	1 3/4"	2-4	PS PAINT	5	45 minute	door closer, kickplate
114-1	MASSAGE	C-1	WOOD	STAIN	-	3'-0"	7'-0"	1 3/4"	2-1	WOOD STAIN	7	-	-
115-1	LAUNDRY	C-1	WOOD	STAIN	-	3'-0"	7'-0"	1 3/4"	2-1	WOOD STAIN	9	-	-
118-1	CLOSET	2 X C-5	WOOD	STAIN	-	3'-0"	7'-0"	1 3/4"	2-1	WOOD STAIN	10	-	bifold closet door
117-1	STEAM SHOWER	C-1	WOOD	STAIN	-	3'-0"	7'-0"	1 3/4"	2-1	WOOD STAIN	4	-	undercut door, door closer, kickplate
118-1	SOILED LAUNDRY	C-1	WOOD	STAIN	-	3'-0"	7'-0"	1 3/4"	2-1	WOOD STAIN	9	-	undercut door
119-1	CLEAN STORAGE	C-1	WOOD	STAIN	-	3'-0"	7'-0"	1 3/4"	2-1	WOOD STAIN	11	-	undercut door
120-1	H.C. W.C.	C-1	WOOD	STAIN	-	3'-0"	7'-0"	1 3/4"	2-1	WOOD STAIN	4	-	undercut door, door closer, kickplate
121-1	LUNCH ROOM	C-1	WOOD	STAIN	-	3'-0"	7'-0"	1 3/4"	2-1	WOOD STAIN	9	-	-
122-1	EXAM ROOM	C-1	WOOD	STAIN	-	3'-0"	7'-0"	1 3/4"	2-1	WOOD STAIN	7	-	-
122-2	EXAM ROOM	C-1	WOOD	STAIN	-	3'-0"	7'-0"	1 3/4"	2-1	WOOD STAIN	7	-	-
123-1	PHOTO STUDIO	C-1	WOOD	STAIN	-	3'-0"	7'-0"	1 3/4"	2-1	WOOD STAIN	12	-	door closer, kickplate
124-1	EXAM ROOM	C-1	WOOD	STAIN	-	3'-0"	7'-0"	1 3/4"	2-1	WOOD STAIN	7	-	-
124-2	EXAM ROOM	C-1	WOOD	STAIN	-	3'-0"	7'-0"	1 3/4"	2-1	WOOD STAIN	7	-	-
125-1	OFFICE	C-1	WOOD	STAIN	-	3'-0"	7'-0"	1 3/4"	2-1	WOOD STAIN	6	-	-
128-1	CLOSET	C-1	WOOD	STAIN	-	3'-0"	7'-0"	1 3/4"	2-1	WOOD STAIN	11	-	-
128-1	CORRIDOR/RAMP	EXISTING TO REMAIN							EXISTING TO REMAIN				
129-1	MECHANICAL	EXISTING TO REMAIN							EXISTING TO REMAIN				
130-1	ELECTRICAL	C-2	METAL	PAINT	-	3'-0"	7'-0"	1 3/4"	2-2	PS PAINT	5	-	door closer, kickplate
131-1	FUTURE TENANT	C-3	METAL	PAINT	-	3'-0"	7'-0"	1 3/4"	2-3	PS PAINT	3	20 minute	door closer, kickplate

SECTION 1-1
 SCALE: 1/8" = 1'-0"

SECTION 2-2
 SCALE: 1/8" = 1'-0"

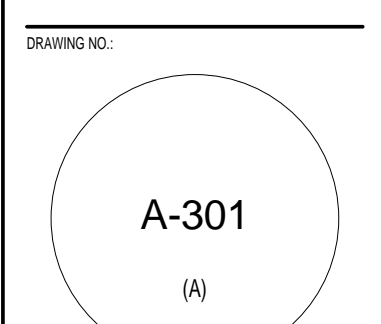


- ALL DRAWINGS AND RELATED DOCUMENTS ARE THE COPYRIGHT OF COLIN W. CRAIG ARCHITECTURE AND MUST BE RETURNED UPON REQUEST. REVISIONS OF DRAWINGS AND RELATED DOCUMENTS IN WHOLE OR IN PART IS FORBIDDEN WITHOUT THE ARCHITECT'S WRITTEN PERMISSION. WRITTEN DIMENSIONS SHALL HAVE PRECEDENCE OVER SCALED DIMENSIONS. CONTRACTOR SHALL VERIFY AND BE RESPONSIBLE FOR ALL DIMENSIONS AND CONDITIONS ON THE JOB. IN THE EVENT THAT ANY DISCREPANCY APPEARS BETWEEN THE DRAWING AND SPECIFICATIONS OR ANY OF THE CONTRACT DOCUMENTS, THE CONTRACTOR SHALL IMMEDIATELY BRING SAME TO ARCHITECT'S ATTENTION. PROVIDED THAT IN THE EVENT THAT SUCH DISCREPANCIES ARE NOT OBSERVED, THE SPECIFICATION SHALL TAKE PRECEDENCE OVER THE DRAWING.
- REVISIONS
- ISSUED FOR OWNER REVIEW MAY 28, 2013
 - ISSUED FOR OWNER REVIEW JUNE 05, 2013
 - ISSUED FOR OWNER REVIEW JUNE 07, 2013
 - ISSUED FOR OWNER REVIEW JUNE 10, 2013
 - ISSUED FOR BP, PRICING JULY 25, 2013

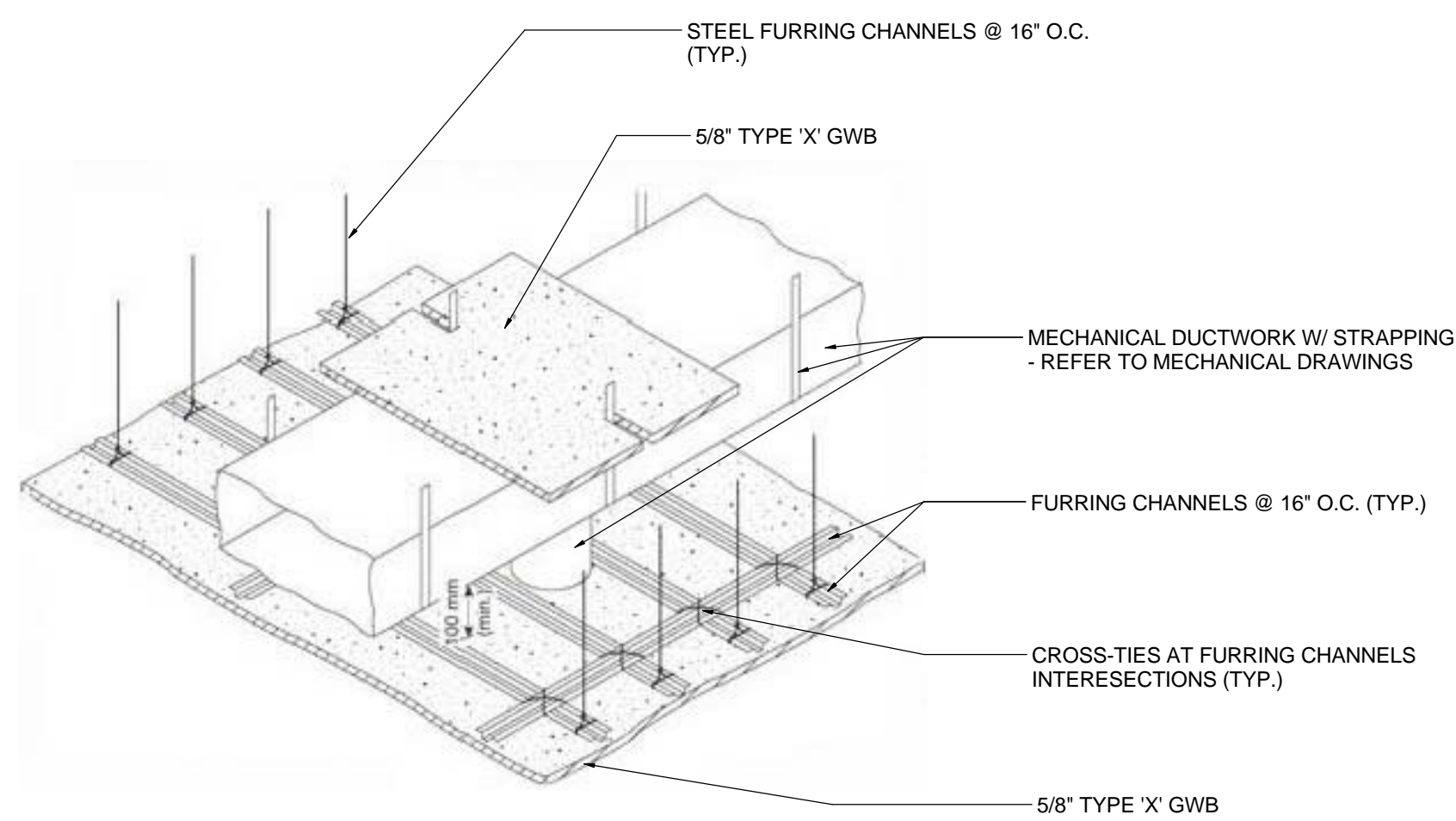
DATE: 04/30/13
 JOB NO.: 2013-100
 SCALE: As indicated
 DRAWN BY: PAR
 CHECKED BY: JMH
 PROJECT TITLE:

MEDICAL CENTRE
 1335 7th Avenue,
 Prince George,
 BC, V2L 3N9

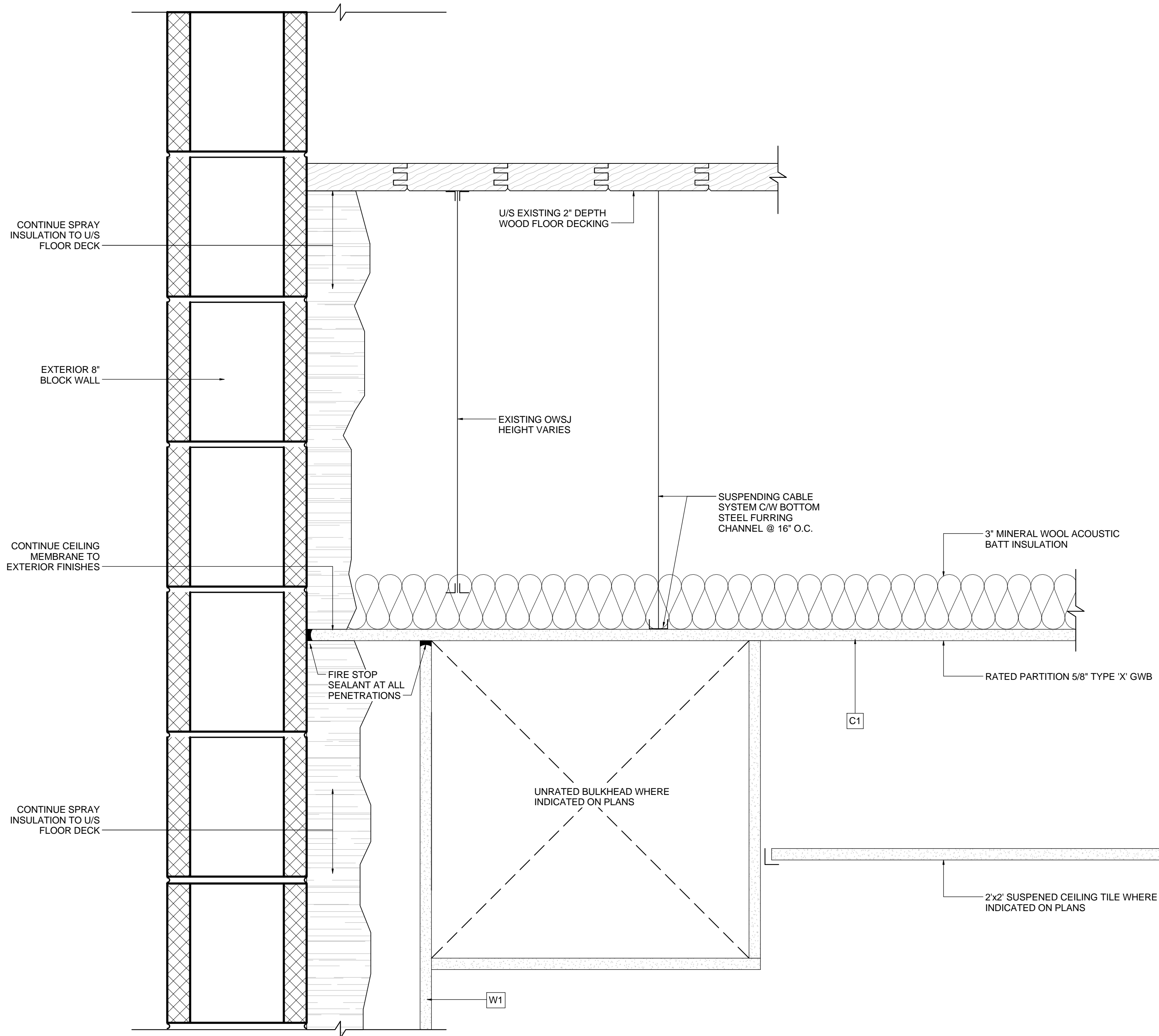
SHEET TITLE:
 SECTIONS



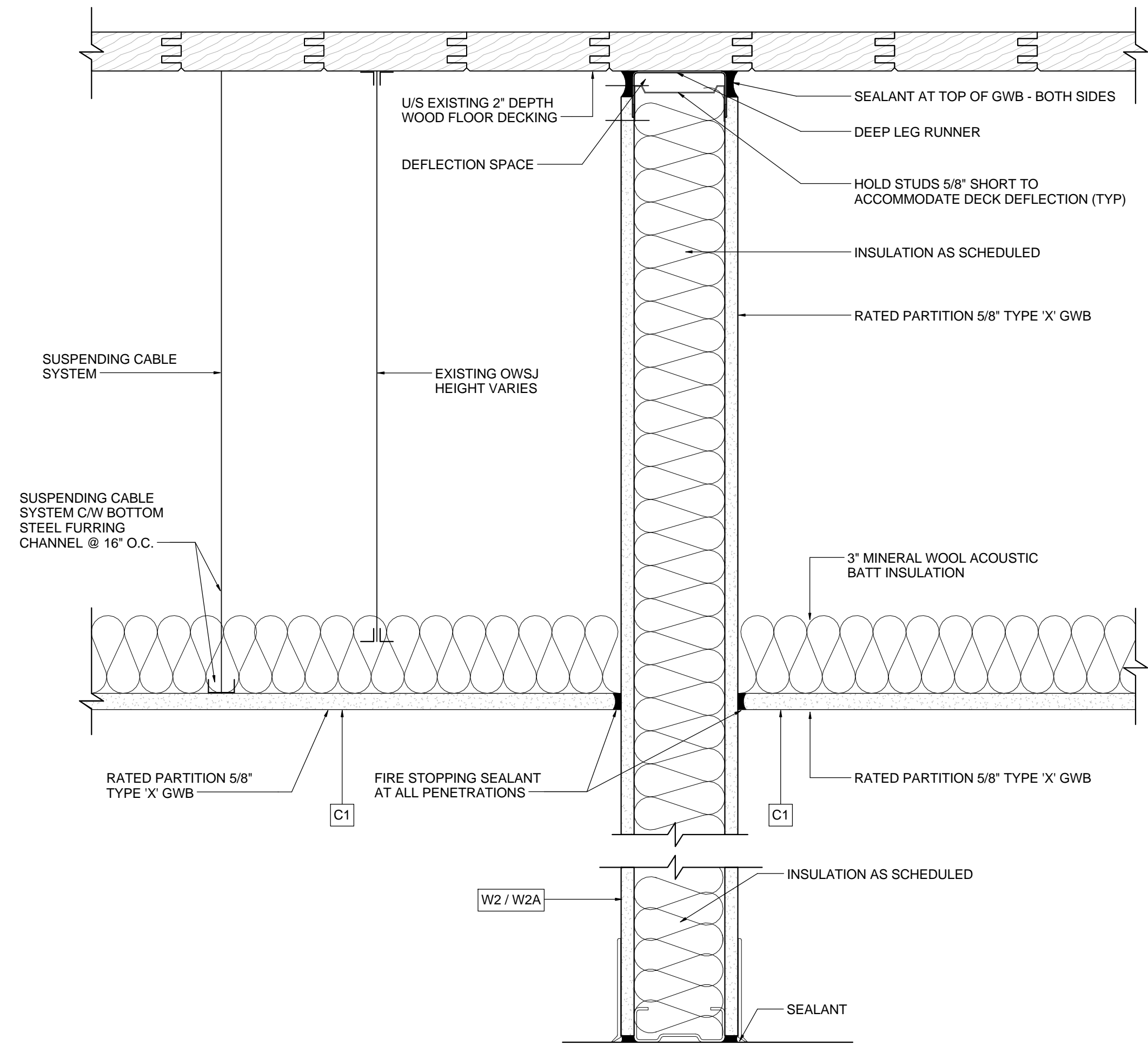
COLIN W. CRAIG ARCHITECTURE 201 2455 DOLLARTON HIGHWAY NORTH VANCOUVER BC V7H 0A2 (604) 985 6626



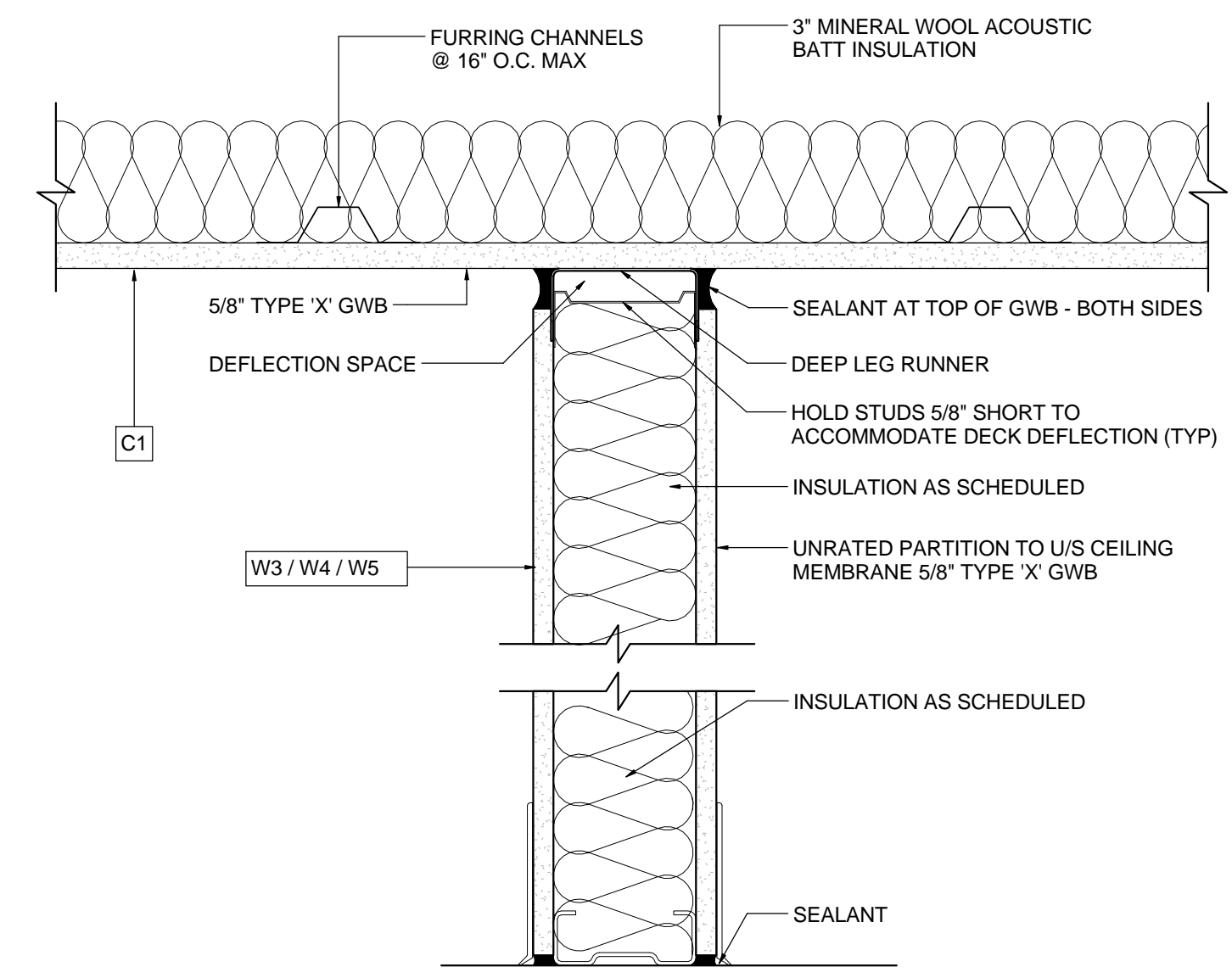
4 THERMAL PROTECTION ABOVE A DUCT
A-501 SCALE - 3" = 1'-0"



2 FLOOR AND EXTERIOR WALL DETAIL
A-501 SCALE - 3" = 1'-0"



3 RATED PARTITION
A-501 SCALE - 3" = 1'-0"



1 INTERIOR PARTITION
A-501 SCALE - 3" = 1'-0"

ALL DRAWINGS AND RELATED DOCUMENTS ARE THE COPYRIGHT OF COLIN W. CRAIG ARCHITECTURE AND MUST BE RETURNED UPON REQUEST. REPRODUCTIONS OF DRAWINGS AND RELATED DOCUMENTS IN WHOLE OR IN PART IS FORBIDDEN WITHOUT THE ARCHITECT'S WRITTEN PERMISSION. WRITTEN DIMENSIONS SHALL HAVE PRECEDENCE OVER SCALED DIMENSIONS. CONTRACTOR SHALL SPECIFY AND BE RESPONSIBLE FOR ALL DIMENSIONS AND CONDITIONS ON THE JOB. IN THE EVENT THAT ANY DISCREPANCY APPEARS BETWEEN THE DRAWING AND SPECIFICATIONS OR ANY OF THE CONTRACT DOCUMENTS, THE CONTRACTOR SHALL IMMEDIATELY BRING SAME TO ARCHITECT'S ATTENTION. PROVIDED THAT IN THE EVENT THAT SUCH DISCREPANCIES ARE NOT OBSERVED, THE SPECIFICATION SHALL TAKE PRECEDENCE OVER THE DRAWING.

REVISIONS

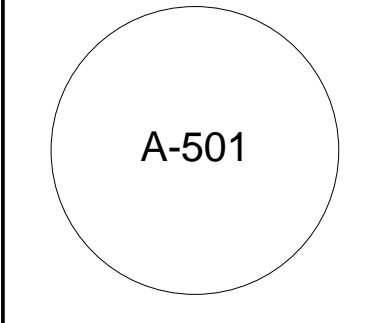
1. ISSUED FOR OWNER REVIEW MAY 28, 2013
2. ISSUED FOR OWNER REVIEW JUNE 05, 2013
3. ISSUED FOR OWNER REVIEW JUNE 07, 2013
4. ISSUED FOR OWNER REVIEW JUNE 10, 2013
5. ISSUED FOR BP, PRICING JULY 25, 2013

DATE: 07/22/13
 JOB NO.: 2013-100
 SCALE: 3" = 1'-0"
 DRAWN BY: PAR
 CHECKED BY: JMH
 PROJECT TITLE:

MEDICAL CENTRE
 1335 7th Avenue,
 Prince George,
 BC, V2L 3N9

SHEET TITLE:
 WALL AND CEILING DETAILS

DRAWING NO.:



COLIN W. CRAIG ARCHITECTURE 201 2455 DOLLARTON HIGHWAY NORTH VANCOUVER BC V7H 0A2 (604) 985 6626

TECHNICAL SPECIFICATIONS

10000 GENERAL REQUIREMENTS

- All work to be done in accordance with the British Columbia Building Code 2012, City of Prince George Bylaws and Regulations.

03300 CONCRETE SLAB ON GRADE

- Do work in accordance with CAN/CSA-A23.1-09 and CAN/CSA A23.2-09 except where specified otherwise
- MATERIALS
 - Portland cement: Type GU or Type HS, as required to CAN/CSA A3000-08 ANP CAN/CSA A3001-08.
 - Blended hydraulic cement: CSA-A362.
 - Supplementary cementing material: to CAN/CSA-A23.5.
 - Cementitious hydraulic slag: to CAN/CSA-A363.
 - Water: to CAN/CSA A23.1-09.
 - Aggregates: to CAN/CSA A23.1-09. Coarse aggregates to be normal density.
 - Air entraining admixture: to ASTM C260.
 - Chemical admixtures: to ASTM C494 and CAN/CSA 5413-07.
 - Superplasticizer: to CAN3-A266.5 "Guidelines for the use of Super-plasticizing Admixtures in Concrete".
- Shrinkage compensating grout: premixed compound consisting of non-metallic aggregate, Portland cement, water reducing and plasticizing agents of pouring consistency, capable of developing a compressive strength of 50 MPa at 28 days.
- Concrete curing and sealing compound: Where slabs are to receive resilient flooring or carpeting, use curing compounds compatible with flooring adhesive. Do not use where bond required for additional concrete or surface coating.
- Bonding agent: formulated for bonding new concrete to cured concrete.
- Waterstop: extruded PVC with factory welded corner and intersecting pieces.
- Pre-moulded joint forms, expansion and isolation joints: Bituminous impregnated fibre board to ASTM D1751.
- Dovetail anchor slots: minimum 0.6 mm thick galvanized steel with insulation filled slots.
- Underlaid damp proof membrane: Polyethylene film 6mil to CGSB 51-GP-51M.
- Concrete mix: Proportion normal density concrete in accordance with CAN/CSA A23.1, Alternative 1. Mix designs are to be established in accordance to CSA A23.1, Clause 4.3.5.1 or Clause 4.3.5.2.
- In locations where new concrete is dowelled to existing work, drill holes in existing concrete. Attach steel dowels of deformed steel reinforcing bars with H81 TR500, Simpson Set, or Red Head CE epoxy adhesive to the depths shown on the drawings or specified by the manufacturer. Intentionally roughen interface between existing and new concrete to form an ampitude.
- The finish to be provided for the unformed plastic concrete surfaces shall be:
 - Working of the concrete surface shall take place while it is sufficiently plastic to achieve the desired shape, plane, and texture. Screeding shall be followed by one or more of the operations of darbying, floating, trowelling, and tooling of edges and joints. In that order, to provide the surface finish required.
 - Initial finishing shall be accomplished by screeding, darbying, or bull floating and shall be performed in accordance with the requirements of CAN/CSA-A23.1, Clause 7.5.
 - Initial finishing operations shall be completed before any bleed or free water appears on the concrete surface. Overworking, which can bring excessive fines to the concrete surface, shall not be permitted.
 - Final finishing shall be accomplished by mechanical floating, mechanical trowelling, creation of the specified surface finish, and tooling of edges and joints. In that order. Exposed edges and corners shall be as detailed. Surfaces at toolled edges shall be trowelled and sand-blasted to remove tool edge marks. Hand floating and trowelling shall only be permitted in small areas of restricted access. All final finishing procedures shall conform to the requirements of CAN/CSA-A23.1, Clause 7.5.4.
 - Final finishing shall commence after bleed water has disappeared from the surface and when the concrete has stiffened sufficiently to prevent the working of excess water to the surface. No additional dry cement or water shall be used to facilitate finishing
 - Honeycomb construction - structural small cell
 - Stiffened: face sheets welded to uninsulated core
 - temperature rise rated - as per CBCB requirements

03540 CEMENTITIOUS DECKS AND UNDERLAYMENT

- Provide cementitious self-leveling poured floor underlayment for resurfacing and patching of existing interior concrete floor, and as concrete sealer, and moisture reduction barrier.

05500 METAL FABRICATIONS

- Provide metal fabrications such as stair and ramp handrails and guardrails.
- Do welding work in accordance with CSA W59
- Erect metalwork square, plumb, straight and true, accurately fitted, with tight joints and intersections.
- Submit shop drawings to Architect for review.

06101 ROUGH CARPENTRY

- In-wall solid blocking as required to standard of Canadian softwood plywood (CSP) to CSA 0151-M1978 - Standard Construction.
- Installing Equipment: Provide bracing on all wall or ceiling mounted installations. Plywood or sheet metal backing to be secured between studs, unless noted otherwise.

06200 FINISH CARPENTRY

- Install door frames and door hardware as per manufacturers recommendations (refer to Sections 08210 and 08710).
- Install architectural millwork.

06400 ARCHITECTURAL MILLWORK

- Do finish carpentry to Millwork Standards of the Architectural Woodwork Manufacturers Association of Canada (AWMAC) and the Architectural Woodwork Manufacturers Association of BC (AWMABC) Latest Editions.
- Fabricate millwork to AWMAC "Premium" quality grade.
- All millwork casework construction to be 3/4" medium density particleboard unless otherwise noted.
- All countertops with sinks and cabinets in wet areas to be 3/4" plywood.
- All exposed cabinet work and all doors to be Birch veneer, uniform light (white) Grade 1, Premium Birch Species, rotary cut.
- Wood veneer to be clear lacquer finish/stain, satin finish.
- All interior cabinet bottoms, backs, gables, and shelves to be birch veneer.
- Drawers to have 3/4" birch veneer fronts, 5/8" birch veneer bottoms, and 1/2" birch veneer backs and sides.
- All exposed ends, such as interior cabinet shelves, to have 1/4" solid birch edging.
- Maximum span for 3/4" shelves is 3'-0".
- All exposed millwork hardware to be brushed stainless steel finish.
- Metal adjustable shelf standards to be recessed flush mounted.
- All cabinets to have concealed hinges.
- Cabinet doors to have locks where indicated
- Drawers to have full-slide extensions.
- Coordinate all equipment, plumbing and electrical fixtures, and all services and appliances with plumbing and electrical trades and confirm all sizes, locations, and required clearances prior to manufacture of millwork.
- Ensure that all blocking is sufficient to prevent deflection. Blocking is shown schematically. Use counter sunk screws through plywood backing, 6" from end of cabinet.
- Provide shop drawings to Architect for review prior to fabrication.

06666 PLASTIC LAMINATE

- Do laminated plastic work to Millwork Standards of the Architectural Woodwork Manufacturers Association of Canada (AWMAC) and the Architectural Woodwork Manufacturers Association of BC (AWMABC)
- Laminated plastic for all countertops and countertop edges to be General Purpose grade GP-10, 1/4" thick, based on solid colour or pattern grade, satin or matte finish.

07213 BATT AND BLANKET INSULATION

- ACOUSTICAL - Batt and blanket mineral fibre fiction fill to CAN 4-5102-79 Type 1 - for rated non-combustible wall assemblies.

07270 SPRAY POLYURETHANE FOAM INSULATION

- Foamed-in-place polyurethane in exterior framed walls to locations indicated, intended to function as an air barrier assembly to and provide thermal protection.
- Polyurethane Foam: TO CAN/ULC S705.1, including amendment 1 & 2, closed cell, spray-applied rigid cellular polyurethane foam air barrier and thermal insulation, medium density.
- Installation, including preparation, to manufacturer's instructions.
- Approved product: BASF Canada Inc.; Product: Walltite Eco

07840 FIRE STOPPING

- Fire stopping and smoke seals within mechanical and electrical assemblies - see Division 15 and 16
- Submit shop drawings and product literature for all proposed materials. Architect to approve proposed materials prior to installation.
- Each and every firestop location must be labelled with a laminated label affixed with a wire tie. Label must identify product name and manufacturer and date of installation.
- Firestop and Smoke Seal at:
 - Penetrations through any fire rated assembly [floor/celling]
 - Top of fire rated assemblies
 - Openings and sleeves installed through fire rated assemblies
 - Around mechanical and electrical assemblies penetrating fire rated assemblies
- Rigid ductwork - refer to fire damper installation details - provide as required.

07900 JOINT SEALERS

- INTERIOR - joints between dissimilar materials, around perimeter of sheet vinyl flooring - ACRYLIC LATEX ONE PART, Acceptable material: Rubber Caulk 4000 by PRC Canada or equal by MONO or Tremco.
- INTERIOR - perimeter of interior partition walls (both sides) including mechanical and electrical penetrations - ACOUSTICAL SEALANT ONE PART, Acceptable material: Tremco Acoustical Sealant.
- Any other condition - contractor to submit shop drawing / product literature to consultant for approval PRIOR to installation.
- Install all products as per manufacturer's Instructions.
- WARRANTY - sealant applicator shall guarantee the entire sealant application for THREE YEARS from the date of Substantial Performance. Copies of the guarantee are to be included in the final maintenance manuals.

08110 STEEL DOORS AND FRAMES

- Steel fire rated doors and frames - labelled and listed in conformance with CANA-S100-M80 (R19985) and ANSIN/FPA 252-1999 for rating as indicated.
- Provide fire labelled frame products for those openings requiring fire protection ratings as indicated.
- All sheet steel materials to be hot dipped galvanized to ASTM A 526/A 526M-90, ASTM A 527/A 527M-90, coating designation to ASTM A 525M-91b, ZF75, minimum base steel thickness in accordance with CSDFMA Table 1.
- Door Core Materials:
 - Honeycomb construction - structural small cell
 - Stiffened: face sheets welded to uninsulated core
 - temperature rise rated - as per CBCB requirements
- Accessories:
 - door silencers - single stud rubber
 - rigid PVC top and bottom caps
 - fabricate glazing stops as formed channel min 5/8" height
 - door bottom seal
 - metallic paste filler - to manufacturer's standards
 - Fire labels - as required
 - ULC rated door grilles - as required
- Fabricate pressed steel door frames in accordance to Canadian Steel Door and Frame Manufacturers' Association (CSDFMA) Specifications for Commercial Steel Doors and Frames.
- Interior Frames: 14 gauge to openings 4'-0" unsupported width or more, 16 gauge to openings 4'-0" unsupported width or less - welded construction only.
- Blank, reinforce, drill and tap frames for mortised, templated hardware and electronic hardware using templates provided by finish hardware supplier. Reinforce frames for finish hardware. All reinforcing plates, min 1/4", to have full perimeter spot welds at min 2" intervals.
- Provide appropriate anchorage to floor and wall construction.
- Installation by Section 06200 - install doors and hardware in accordance with hardware templates and manufacturer's instructions.
- Provide even margins between doors and jambs and floor/thresholds maximums as follows:
 - Hinge side: 1/32"
 - latch side and head: 1/16"
 - floor / threshold: 1/4"
- Submit shop drawings for review and approval prior to fabrication.

08120 ALUMINUM DOORS AND FRAMES

- Exterior frames and doors to accommodate expansion and contraction within service temperature range of -35 to 35 degrees Celsius, movement within system, movement between system and perimeter framing components or substrate.
- Size glass thickness and glass unit dimensions to limits in accordance with CAN/CGSB-12-1-M90.
- Door system to provide average thermal resistance of: door system - overall - U factor of 0.5. Provide continuous air barrier and vapour retarder through door system. Primarily in line with inside pane of glass and head bead of glazing compound.
- Aluminum extrusions: Aluminum Association alloy AA 6063-T5 anodizing quality.
- Sheet aluminum: Aluminum Association alloy AA 1100-H14 anodizing quality.
- Steel reinforcement: CSA G40.20/G40.21-98, grade 300 W.
- Fasteners: aluminum or stainless steel, finished to match adjacent metal.
- Weatherstrips: replaceable metal backed wood pile.
- Door bumpers: black neoprene.
- Door bottom seal: adjustable door seal of anodized extruded aluminum frame and vinyl-weather seal, recessed in door bottom, closed ends.
- Isolation coating: bituminous paint.
- Laminated glass to CAN/CGSB-12-1-M90, Type 1, Class B.
- Fabricate medium stile doors or porthole extrusions with minimum wall thickness of 1/8". Bottom rail to be nominally 1/2" wide. Doors and frames to be by same manufacturer.
- Reinforce mechanically-jointed corners of doors to produce sturdy door unit.
- Submit shop drawings for review and approval prior to fabrication.

08200 WOOD DOORS AND FRAMES

- Doors to be solid core, particle board construction with wood lock blocks, 3-ply construction. Face panels - Hardwood Grade 1 Uniform Light Maple.
- Glazing: tempered/laminated, thickness as required by opening size.
- Vertical hardwood edge stops to match face veneer
- Provide hardwood glazing stops to match face veneer with mitered corners
- Installation by Section 06200 - install doors and hardware in accordance with hardware templates and manufacturer's instructions.
- Submit shop drawings for review and approval prior to fabrication.

08710 FINISH HARDWARE

- All hardware to be warranted for a period of not less than two years on material and workmanship and for door closer not less than ten years from the date of substantial completion. Material found to be defective shall be replaced (including installation) at no charge to the Owner.
- It is the responsibility of the hardware supplier to check all architectural drawings and details and to provide all required door hardware. The following schedule is provided as a comprehensive guide to quality, function, design and type of required hardware. Door and frame types and sizes are scheduled for reference only - this schedule is not to be used as a "take-off" for doors and frames.

SET # 1

1 Ea.	Continuous Hinge	Heavy Duty	628
1 Ea.	Continuous Transfer Hinge	Heavy Duty x 8 Wide	628
1 Set	Flush Bolt	Top & Bottom Inactive Door	628
1 Ea.	Latch Lock	Latch c/w hold back feature	628
1 Ea.	Insole Push Padde	Engraved PUSH mounted at 40" from floor	628
1 Ea.	Electric Strike	Compatible with door and latch lock	628
1 Ea.	Cylinder	Keyway to match interior hardware	626
1 Ea.	Automatic Operator	Full Width Header x Relay x 2 Actuators	AL
2 Set	Door Pull	18" Offset "D" back to back mounted	320
2 Ea.	Door Closer	Push Side c/w PS arm	689
2 Ea.	Door Mounting	Drop Plate x Spacer	689
2 Ea.	Door Stop	Heavy Duty Exterior	260
1 Ea.	Power Supply	1 Amp	FF
1 Ea.	Threshold	1/2" High x Door Width	AL
2 Ea.	Door Sweep	Neoprene x Door Width	AL

SET # 2

6 Ea.	Butt Hinge	Heavy Weight Ball Bearing	260
1 Set	Flush Bolt	Top & Bottom	260
1 Ea.	Dead Lock	Classroom Function	626
2 Set	Door Pull	18" Offset "D" back to back mounted	320
1 Ea.	Automatic Operator	Full Width Header x Relay x 2 Actuators	AL
1 Ea.	Door Closer	4000 Series Push Side Mounted	689
1 Ea.	Door Mounting	Drop Plate	689
2 Ea.	Kick Plate	6" x Width Required	320
2 Ea.	Door Stop	Wall or Floor to Suit	260
1 Ea.	Threshold	1/2" High x Door Width	AL
1 Ea.	Weather Strip	Neoprene - 1Door Width x 2Door Height	AL
2 Ea.	Door Sweep	Neoprene x Door Width	AL
2 Ea.	Meeting Sibe	File x Door Height	AL

SET # 3

3 Ea.	Butt Hinge	Standard Weight Ball Bearing	260
1 Ea.	Dead Lock	Classroom Function	626
1 Ea.	Classroom Lock Set	Medium Duty Lever	626
1 Ea.	Door Closer	1000 Series	689
1 Ea.	Kick Plate	6" x Width Required	320
1 Ea.	Door Stop	Wall or Floor to Suit	260
1 Ea.	Threshold	1/2" High x Door Width	AL
1 Ea.	Door Seal	Silicone - 1Door Width x 2Door Height	FF
1 Ea.	Door Sweep	Neoprene x Door Width	AL

SET # 4

3 Ea.	Butt Hinge	Standard Weight Ball Bearing	260
1 Ea.	Indicator Bolt	Occupied Indicator	626
1 Ea.	Privacy Set	Medium Duty Lever	626
1 Ea.	Door Closer	1000 Series x Delay Action	689
1 Ea.	Kick Plate	6" x Width Required	320
1 Ea.	Door Stop	Wall or Floor to Suit	260
1 Ea.	Threshold	1/2" High x Door Width	AL

SET # 5

3 Ea.	Butt Hinge	Standard Weight Ball Bearing	260
1 Ea.	Storeroom Lock Set	Medium Duty Lever	626
1 Ea.	Door Closer	1000 Series	689
1 Ea.	Kick Plate	6" x Width Required	320
1 Ea.	Door Stop	Wall or Floor to Suit	260
1 Ea.	Threshold	1/2" High x Door Width	AL

SET # 6

3 Ea.	Butt Hinge	Standard Weight Ball Bearing	260
1 Ea.	Office Lock Set	Medium Duty Lever	626
1 Ea.	Door Stop	Wall or Floor to Suit	260

SET # 7

3 Ea.	Butt Hinge	Standard Weight Ball Bearing	260
1 Ea.	Privacy Set	Medium Duty Lever	626
1 Ea.	Door Stop	Wall or Floor to Suit	260

SET # 8

2 Ea.	Cylinder	Type & Cam to Suit	626
-------	----------	--------------------	-----

SET # 9

3 Ea.	Butt Hinge	Standard Weight Ball Bearing	260
1 Ea.	Passage Set	Medium Duty Lever	626
1 Ea.	Door Stop	Wall or Floor to Suit	260

SET # 10

2 Ea.	Door Pull	2" Round Pedestal	260
-------	-----------	-------------------	-----

SET # 11

3 Ea.	Butt Hinge	Standard Weight Ball Bearing	260
1 Ea.	Storeroom Lock Set	Medium Duty Lever	626
1 Ea.	Door Stop	Wall or Floor to Suit	260

SET # 12

3 Ea.	Butt Hinge	Standard Weight Ball Bearing	260
1 Ea.	Classroom Lock Set	Medium Duty Lever	626
1 Ea.	Door Closer	1000 Series	689
1 Ea.	Kick Plate	6" x Width Required	320
1 Ea.	Door Stop	Wall or Floor to Suit	260

08800 GLAZING

- Perform work in accordance with FGMA Glazing Manual IGMAAC and Laminators Safety Glass Association - Standards manual for glazing installation methods.
- Safety Glass: to CAN/CGSB-12-1-M90 transparent min. 1/4" thick, Type 1 Laminated, Class B float, Category 1. Apply to non-fire rated interior wood doors as called for in Door Schedule.
- Safety Glass: to CAN/CGSB-12-1-M90 transparent min. thickness to be determined, Type 1 Laminated, Class B float, Category 1. For use as shower stall enclosure.

09110 NON-LOAD BEARING WALL FRAMING

- Do metal stud systems work in accordance with the Association of Wall and Ceiling Contractors of BC Specifications Standards Manual version 2003, section 9.7.
- This trade work to be done by a member firm in good standing of the BC Wall and Ceiling Association.
- Non-load-bearing channel stud framing to comply with ASTM C 645-00, 3.5/8" as noted on the drawings, roll formed from 0.036"; 20 gauge thickness hot dipped galvanized sheet steel, for screw attachment of gypsum board or lath. Knock out service holes at 1'-6" centres.
- Floor and ceiling tracks to comply to ASTM C 645-00 in widths to suit stud sizes, 1 1/4" flange height, 3/8" thickness (0.048", 16 gauge).
- Provide glass fibre acoustic batt insulation as in stud wall cavities.

09250 GYPSUM BOARD

- Do work in accordance with CAN/CSA-A82.31-M91, and in accordance with the Association of Wall and Ceiling Contractors of BC Specifications Standards Manual version 2003, section 9.6 (Gypsum Wallboard).
- This trade work to be done by a member firm in good standing of the BC Wall and Ceiling Association.
- Standard gypsum wall board to comply with ASTM C 36/C 36M-01, 36M-01 regular, 1/2" thick, 4'-0" wide x maximum practical length, ends square cut, edges beveled, Ecologo certified minimum 25 recycled content using flue gas desulphurization gypsum.
- Provide all accessories as required for a complete installation.
- Min. Level of finish required, to be reviewed and approved by the Consultant PRIOR to application of finish coating or paint. Approval also required from painting Inspection Agency.

09300 TILE INSTALLATION

- Do tile work in accordance with Tile Installation Manual 2012/2013, produced by the Terrazzo Tile and Marble Association of Canada (TTCMAC).
- Provide 5% minimum of each colour and type of tile, base and trim for maintenance use. Maintenance material to be of the same production run as the installed material.
- Tiles to conform to CAN/CGSB-75.1-M88, including matching tints to suit application. Finish and colour to be selected by Owner. Contractor to ensure selection of tile is suitable for application.
- Portland cement to conform to CAN/CSA-A5-90, type 10.
- Sand to conform to CSA A82.56-M1976.
- Hydrated lime to conform to ASTM C 207-91 (1997).
- Dry set mortar to conform to ANSI A118.1-1992.
- Organic adhesive to conform to CGSB 71-GP-22M 8, Type 1.
- Thin set bond coat latex modified.
- Grout: dry curing wall grout latex modified. Grout preparation to manufactures Instructions. Grout colour to be selected by Owner.
- Pre-fabricated substrates to be of expanded polystyrene foam for tiled shower areas, in conjunction with related waterproofing membrane.

09510 ACOUSTIC CEILINGS

- Do acoustic ceiling work in accordance with the Association of Wall and Ceiling Contractors of BC Specifications Standards Manual 2003, section 9.7.
- This trade work to be done by a member firm in good standing of the BC Wall and Ceiling Association.
- Do not install acoustical files until work above ceiling has been inspected by Consultant.
- Install ceiling in accordance with ASTM C 636-96.

09652 RESILIENT SHEET FLOORING

- Do work in accordance with National / BC Floor Covering Association Specification Standards Manual - latest edition.
- All preparatory work required for final flooring installation to be included.
- Vinyl sheet material to ASTM F 1303-99 Type II Grade I, heat weld-able. Homogenous sheet to have pattern and colour extend throughout total thickness of material.
- Provide as an alternate price for linoleum sheet material to ASTM F 2034, Type I, ISO 24011, heat weld-able. Homogenous sheet to have pattern and colour extend throughout total thickness of material.
- Rubber cove base material to CAN/CSA-A129.5-M87, Type 1, rubber, style B-cove minimum 4'-0" length, height and colour to be selected by Owner.
- Integral flash cove wall base by extending sheet flooring 4" up the wall using adhesive and accessories recommended and approved by the flooring manufacturer.

09911 INTERIOR PAINTING

- Do work in accordance with The Master Painters Institute (MPI) - Architectural Painting Specification Manual 1997 - latest edition updated to September 2002, and standards of the Master Painters and Decorators Association of BC (MPDABC).
- All workmanship to conform to MPI Painting Manual "Premium" Grade by Qualified Journeymen and Apprentices. Apply Paint finish by Roller or Brush.
- Material Safety Data sheets must be available for paints and solvents used on the job site.
- Products used to be "Premium" or better. Approved Product Manufacturers are General Paint, Cloverdale, and Benjamin Moore.
- Interior Room Walls: INT 9.2B high performance architectural latex; eggshell or semi-gloss [sheen level 3 or 5]
- Wood Doors: INT 6.4J polyurethane varnish; clear stain
- Paint colour as per Owner's selections.
- Provide MPDA inspections as necessary for MPDA two year warranty. Include a copy of the warranty in the maintenance manuals.

10000 WASHROOM ACCESSORIES

- Each washroom to include all of the following accessories:
 - Mirror: above every washroom sink, bottom edge of mirror to be 4" above floor
 - Soap dispenser: adjacent to every washroom sink
 - Paper towel dispenser: in each washroom
 - Waste receptacle: in each washroom
 - Toilet tissue roll holder: adjacent to each toilet
 - 24" horizontal grab bar: behind every accessible tank-less toilet, 24" long, centreline of grab bar to be 2'-10" above floor
 - Angled grab bar: beside every accessible toilet, 24"x24"x120", centreline of grab bar to be 2'-10" above floor
 - Clothes hook: in each washroom, mounted 4'-0" above floor
 - Toilet seat cover: on each tank-less toilet

10820 GLASS SHOWER STALL

- Provide glass shower enclosure, including door and hardware.
- Enclosure mounting hardware to be frameless type. Finish to be selected by Owner.
- Glass panels to be clear safety glass to CAN/CGSB-12-1-M90.
- Install as per manufacturer's instructions. Install securely and in correct relationship with adjacent construction, straight and plumb.

11100 OWNER'S SUPPLIED EQUIPMENT

- The Contractor shall provide all labour, materials, equipment and services necessary for the assembly, installation, making operational and providing connections to Owner's supplied equipment, unless otherwise noted on the drawings.

12480 ENTRANCE FLOOR MATS AND FRAMES

- Provide entry floor mats and frame, Aluminum frame, carpet insert, rail and frame finish to be mill finish aluminum.
- Flammability in accordance with ASTM E648, Class 1, Critical Radiant Flux, minimum 0.45 wats/m2.
- Slip resistance in accordance with ASTM D-2047-96, Coefficient of Friction, minimum 0.60 for accessible routes.
- Standard rolling load performance is 350 lb./wheel.
- Submit shop drawing to Architect for review.

ALL DRAWINGS AND RELATED DOCUMENTS ARE THE PROPERTY OF COLIN W. CRAIG ARCHITECTURE AND MUST BE RETURNED UPON REQUEST. REPRODUCTIONS OF DRAWINGS AND RELATED DOCUMENTS IN WHOLE OR IN PART IS FORBIDDEN WITHOUT THE WRITTEN PERMISSION FROM COLIN W. CRAIG ARCHITECTURE. CONTRACTOR SHALL VERIFY DIMENSIONS SHALL HAVE PRECEDENCE OVER ALL DIMENSIONS AND CONDITIONS ON THE JOB. IN THE EVENT THAT ANY DISCREPANCY APPEARS BETWEEN THE DRAWING AND SPECIFICATIONS OR ANY OF THE CONTRACT DOCUMENTS, THE