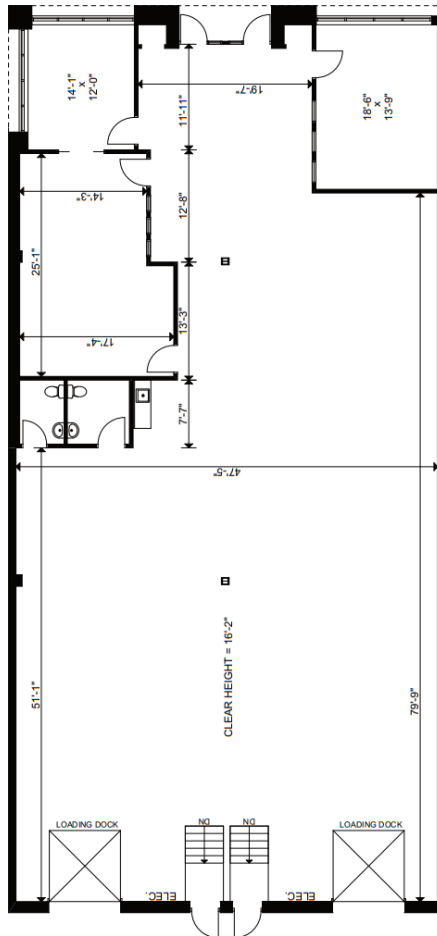


# For Lease

## Western Business Park

3495 Laird Road  
Mississauga, ON



## Unit 22-23

**Total Square Feet**  
4,996 SF

**Availability:** October 1, 2026

**Key features:**

- 1,086 SF of office area
- 16'2" clear height
- 2 loading dock doors
- Net Rent : \$20.50 PSF
- 2026 TMI: \$6.75 PSF