



GROUND FLOOR

ALBERNI STREET

Actual suite, amenity and building interiors, exteriors and views may be noticeably different than what is depicted in photographs and renderings. The developer reserves the right to make modifications and changes to features and finishes, brands, materials, building design, specifications, amenities, features, ceiling heights, flooring patterns and floor plans, development layout and number of suites



**NATIONAL BANK**

**2,300 SF.**

**MONCLER**

**YSL**

**PRADA**

**1,569 sf.**

**ROLEX**

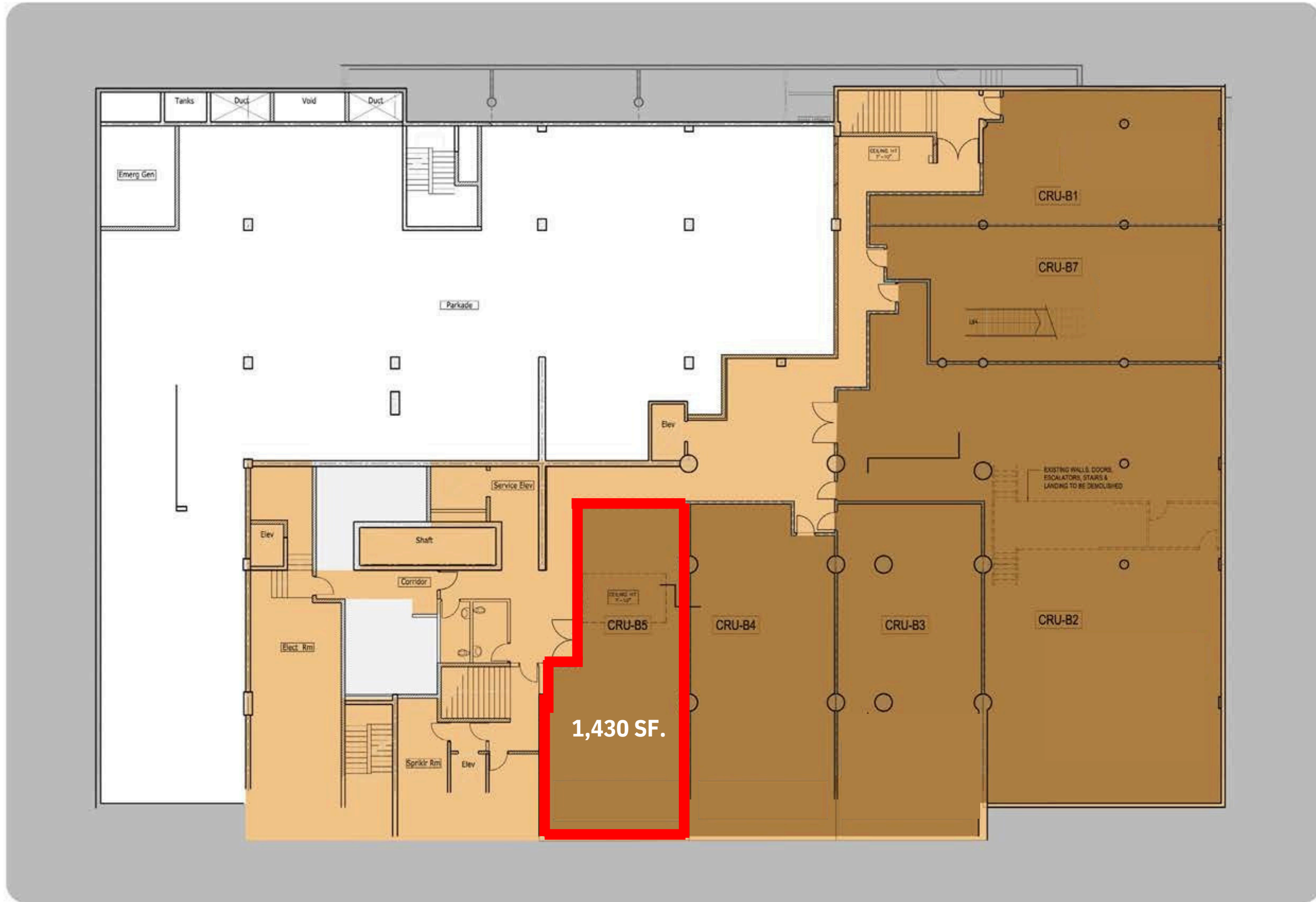
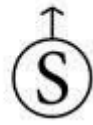
**TORY BURCH**

THURLOW STREET

**SECOND FLOOR**

ALBERNI STREET

Actual suite, amenity and building interiors, exteriors and views may be noticeably different than what is depicted in photographs and renderings. The developer reserves the right to make modifications and changes to features and finishes, brands, materials, building design, specifications, amenities, features, ceiling heights, flooring patterns and floor plans, development layout and number of suites



THURLOW STREET

**BASEMENT**

ALBERNI STREET

Actual suite, amenity and building interiors, exteriors and views may be noticeably different than what is depicted in photographs and renderings. The developer reserves the right to make modifications and changes to features and finishes, brands, materials, building design, specifications, amenities, features, ceiling heights, flooring patterns and floor plans, development layout and number of suites