

FOR LEASE

3310 KING STREET E, KITCHENER



AVAILABILITY

1,342 SQ FT

POSSESSION

JANUARY 1ST, 2025

ZONING

COM-2

RATE

\$16.95/SQ FT NET

CAM & TAXES

\$3.55/SQ FT

- Located on King St E, near Fairway Rd
- Location tailored for convenience and accessibility
- Open-concept layout
- Includes storage room, private washroom
- Free on-site parking
- Additional rent includes utilities
- Excellent for service commercial

THEO PAPADOPOULOS

SALES REPRESENTATIVE

THEO@COUPALMARKOU.COM

519-742-7000 x 103

BROOKS WAY

BROKER

BROOKS@COUPALMARKOU.COM

519-242-8642

COUPAL MARKOU COMMERCIAL
REAL ESTATE INC.

150 KING STREET SOUTH

WATERLOO, ONTARIO N2J 1P6

519-742-7000

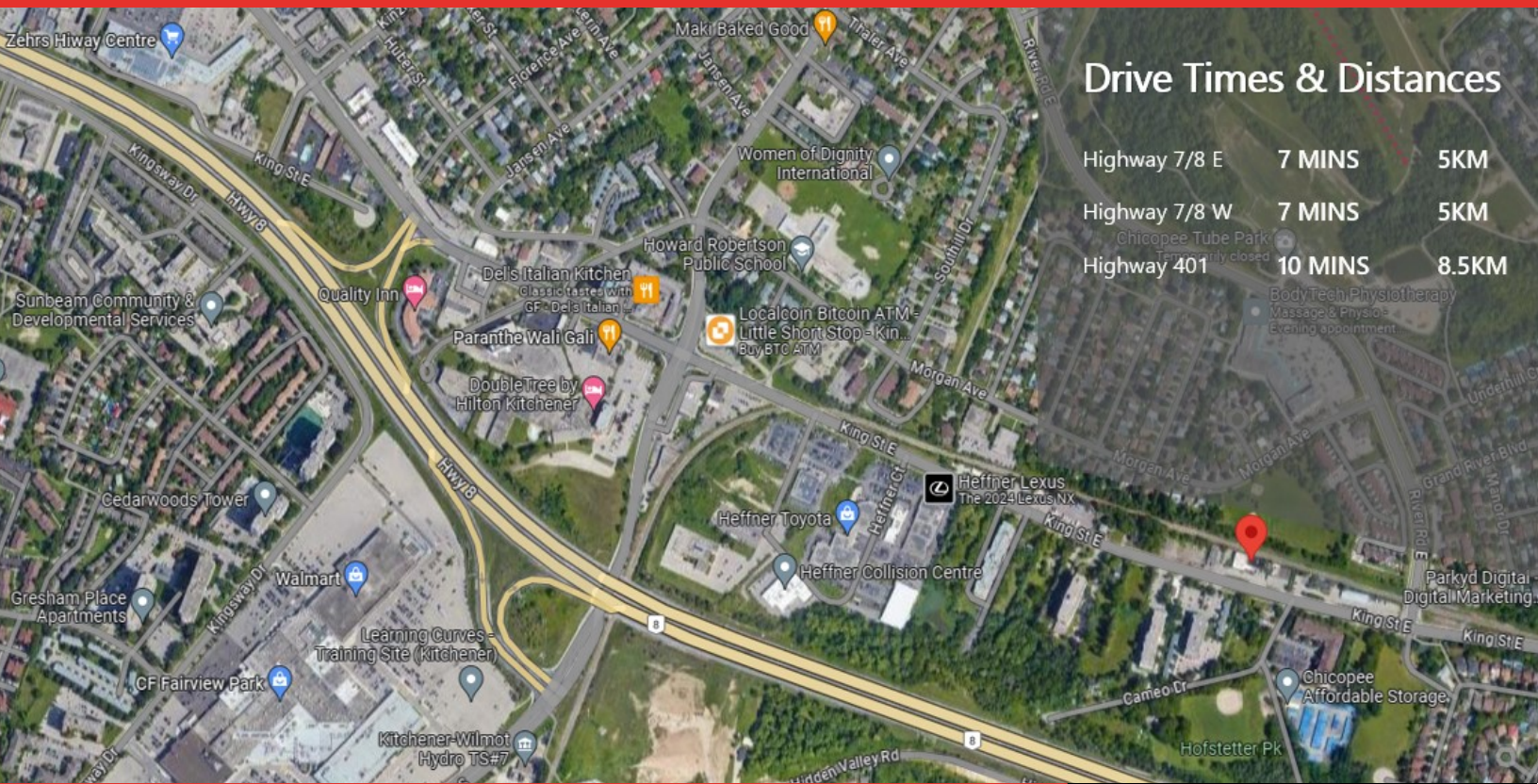
Coupal Markou

Commercial Real Estate Inc., Brokerage

www.coupalmarkou.com

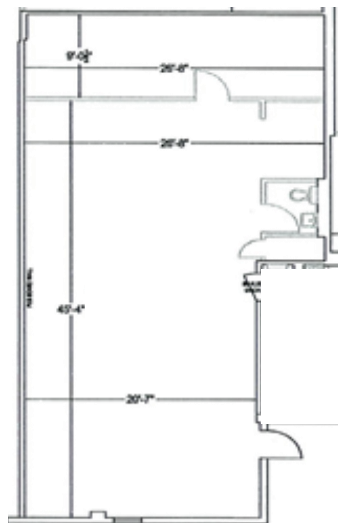
FOR LEASE

3310 KING STREET E, KITCHENER



Drive Times & Distances

| | | |
|---------------|---------|-------|
| Highway 7/8 E | 7 MINS | 5KM |
| Highway 7/8 W | 7 MINS | 5KM |
| Highway 401 | 10 MINS | 8.5KM |



THEO PAPADOPOULOS
SALES REPRESENTATIVE
THEO@COUPALMARKOU.COM
519-742-7000 x 103

BROOKS WAY
BROKER
BROOKS@COUPALMARKOU.COM
519-242-8642

**COUPAL MARKOU COMMERCIAL
REAL ESTATE INC.**
150 KING STREET SOUTH
WATERLOO, ONTARIO N2J 1P6
519-742-7000

This disclaimer shall apply to Coupal Markou Commercial Real Estate Inc., Brokerage, to include all employees and independent contractors. The information set out herein is for advertising purposes, and any images, assumptions, estimates and property details have been obtained from sources deemed to be reliable. No warranty or representation is made as to its accuracy, correctness and completeness of the information, being subject to errors, omissions, conditions, prior sale / lease, withdrawal or other changes without notice. The recipient of the information should conduct its own inquiries and investigations prior to placing any reliance upon the information. MLS



www.coupalmarkou.com