



**CHARLES WIEBE,** CIPS, E. TECH  
COMMERCIAL REALTOR® PREC  
778-549-8555  
CHARLES@CDWANDASSOCIATES.COM

**MARTY PETERS** CIPS  
COMMERCIAL REALTOR® PREC  
604-308-2931  
MARTY@CDWANDASSOCIATES.COM



cdwandassociates.com  
501 - 889 Pender Street, Vancouver

## PROPERTY DESCRIPTION

CDW & Associates is proud to offer an exciting opportunity in the heart of Abbotsford. Introducing Auburn, a brand-new commercial development coming Fall 2026, built by Diverse Properties. Ideally situated beside Galaxy Bowl and near the Abbotsford Courthouse, this centrally located site offers high visibility and easy access for clients and professionals alike.

With flexible zoning, Auburn is an excellent fit for a variety of uses—including medical, dental, professional offices, or retail services.

**PRICE:  
CONTACT US**

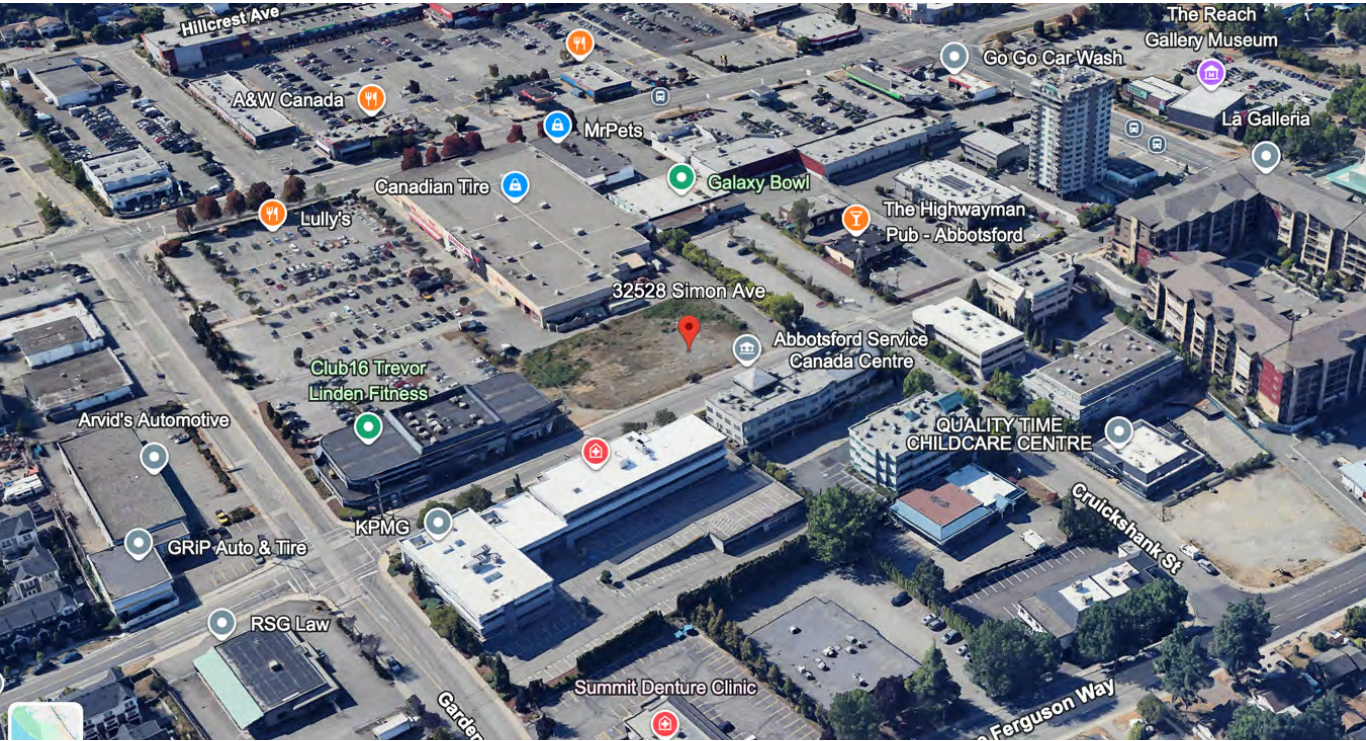
**ZONING:  
RMC**

**AVAILABLE:  
FALL 2026**

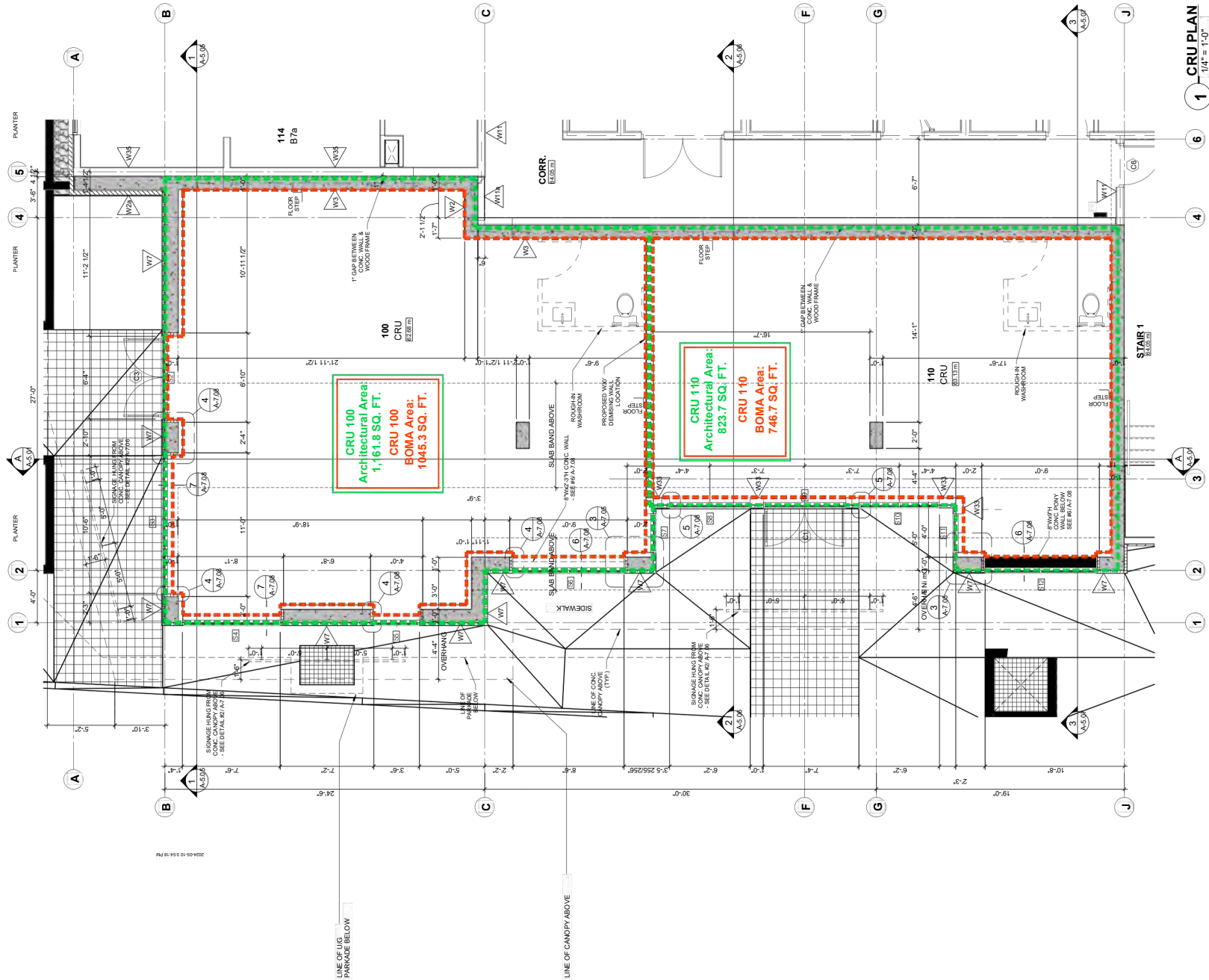
**BRAND-NEW  
COMMERCIAL HUB  
(FALL 2026) BY  
DIVERSE  
PROPERTIES.**

**CENTRAL, HIGH-  
VISIBILITY  
LOCATION BESIDE  
GALAXY BOWL  
AND NEAR THE  
ABBOTSFORD  
COURTHOUSE.**

**FLEXIBLE ZONING  
IDEAL FOR MEDICAL,  
DENTAL,  
PROFESSIONAL  
OFFICES, OR RETAIL.**



# FLOOR PLAN





## CONTACT US FOR MORE INFORMATION

**CHARLES WIEBE,** CIPS, E. TECH  
COMMERCIAL REALTOR® PREC

778-549-8555  
CHARLES@CDWANDASSOCIATES.COM

**MARTY PETERS** CIPS  
COMMERCIAL REALTOR® PREC

604-308-2931  
MARTY@CDWANDASSOCIATES.COM

**CDW**  
& ASSOCIATES  
COMMERCIAL REAL ESTATE



This document has been prepared by RE/MAX Commercial Advantage for advertising and general information only. RE/MAX Commercial Advantage makes no guarantees, representations or warranties of any kind, expressed or implied, regarding the information including, but not limited to, warranties of content, accuracy and reliability. Any interested party should undertake their own inquiries as to the accuracy of the information. Re/Max Commercial Advantage excludes unequivocally all inferred or implied terms, conditions and warranties arising out of this document and excludes all liability for loss and damages arising there from. This publication is the copyrighted property of RE/MAX Commercial Advantage and /or its licensor(s). © 2023. All rights reserved. This communication is not intended to cause or induce breach of an existing listing agreement.