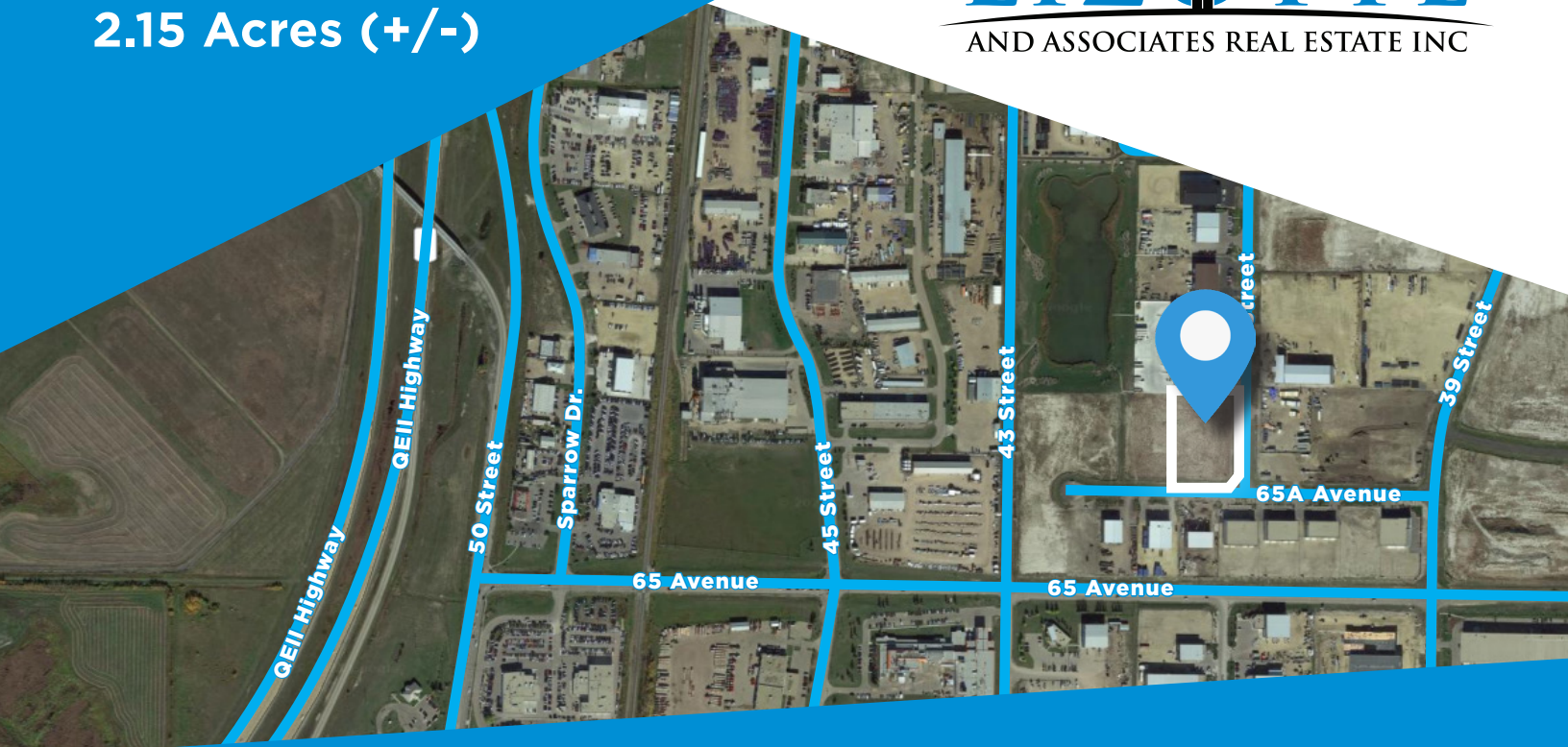


# FOR LEASE

2.15 Acres (+/-)

# LIZOTTE

AND ASSOCIATES REAL ESTATE INC



## 4106 - 65A Avenue, Leduc, AB

## LEDUC BARE LAND

### Property Highlights

- Bare land
- Full municipal services available
- Corner lot
- Design build potential
- Quick access to Arterials

### Property Information

**Address:** 4106 - 65A Avenue, Leduc, AB

**Legal Description:** Plan 1323049, Block 12, Lot 35

**Lot Size:** 2.15 Acres (+/-)

**Zoning:** IM (Medium Industrial)

**Lease Rate:** Market

### Contact

**Richard Lizotte**

President/Broker

Cell: 780.292.1891

Direct: 780.784.55360

richard@lizotterealestate.com

**Lee Berger**

Associate

Cell: 587.983.6654

Direct: 780.784.5363

lee@lizotterealestate.com



780.488.0888



www.lizotterealestate.com



#1200, 10117 Jasper Avenue  
Edmonton, AB T5J 1W8

