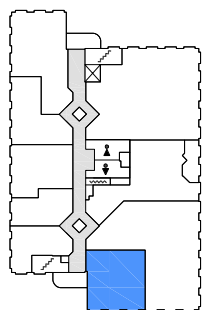
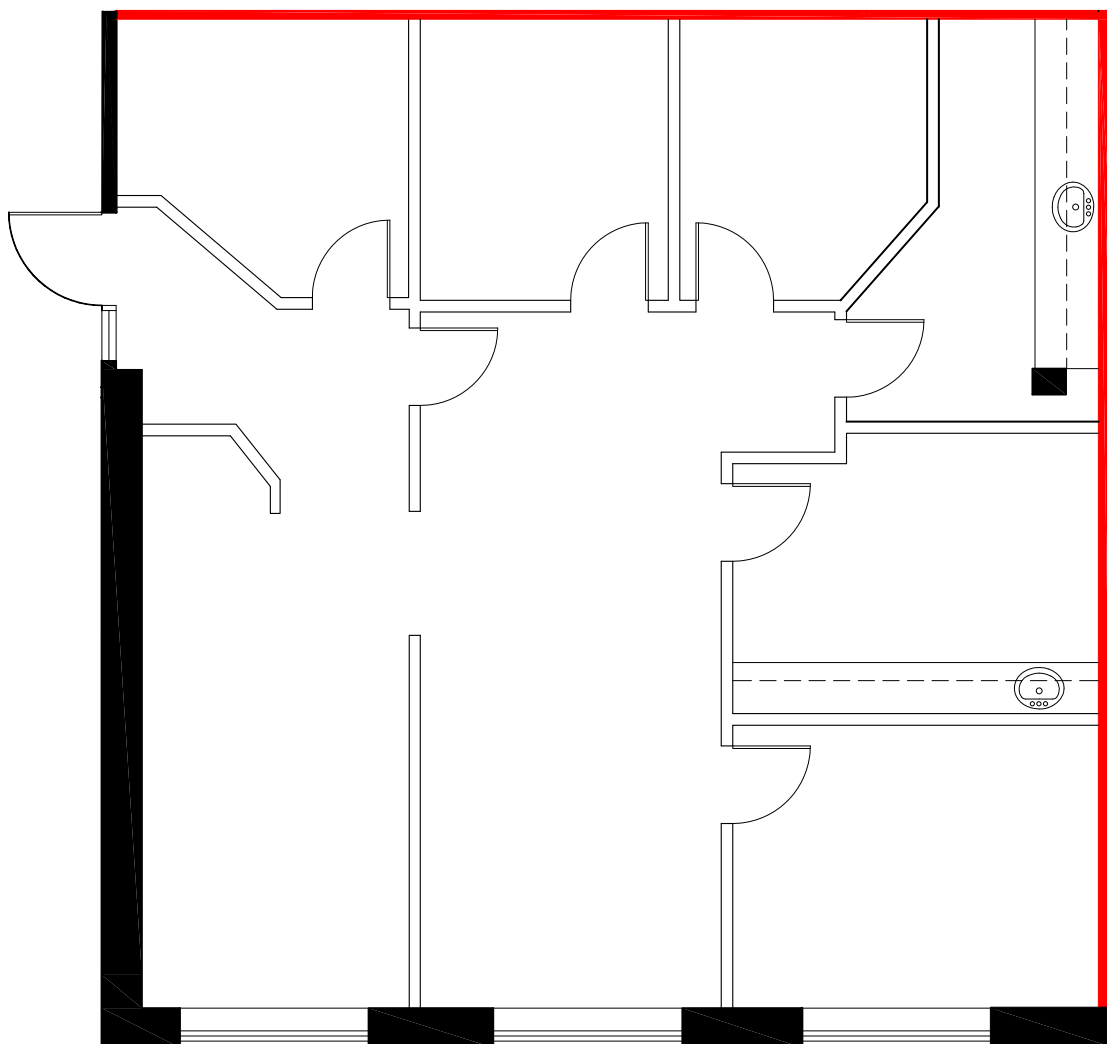


# FLOOR PLAN



DEMISING WALL



APPROXIMATE NORTH  
© 2019 Space Database Inc. All Rights Reserved



PROJECT NAME  
**MALVERN MEDICAL ARTS  
BUILDING**  
1333 NEILSON RD  
TORONTO, ONTARIO

DRAWING NAME  
SUITE 300  
1,249 SQ.FT.  
AS PER ANSI/BOMA Z65.1 1996

SCALE  
AS NOTED

DATE  
SEPTEMBER 17 2019

DRAWING NO.  
M300