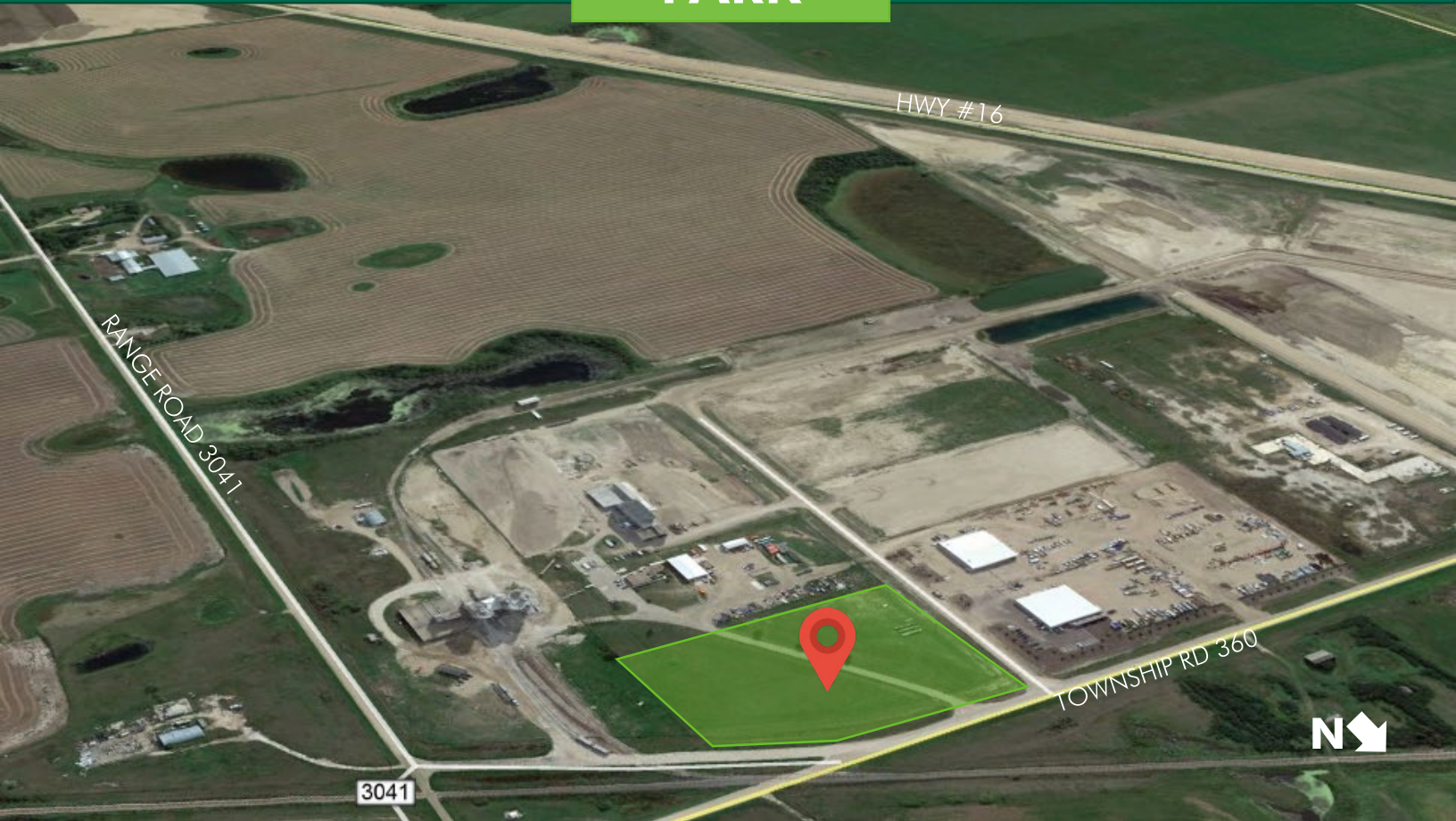


AVAILABLE for LEASE
INDUSTRIAL LAND

CORMAN PARK

EAST FLORAL
INDUSTRIAL PARK



PROPERTY INFO

The available property is located six kilometers east of Saskatoon, Saskatchewan. Saskatoon is the province's largest city, boasting a population of nearly 300,000. The site offers convenient access to Yellowhead Highway #16 which runs through Western Canada from Winnipeg to the coast of British Columbia. The area is rich in skilled labor as it homes not only the province's top university, but also the headquarters' of several major corporations such as Cameco, Nutrien, Agrium, Canpotex, Viterra, and BHP Billiton. Located in the business-friendly Rural Municipality of Corman Park, the site is zoned as M2, providing the necessary zoning and services to accommodate most industrial uses.



CONTACT US

MICHAEL BRATVOLD

Vice President | Managing Director
+1 306 803 5977
michael.bratvold@cbre.com

BEN KELLEY

Sales Representative
+1 306 803 5979
ben.kelley@cbre.com

SHANE ENDICOTT

Sales Representative
+1 306 803 5978
shane.endicott@cbre.com

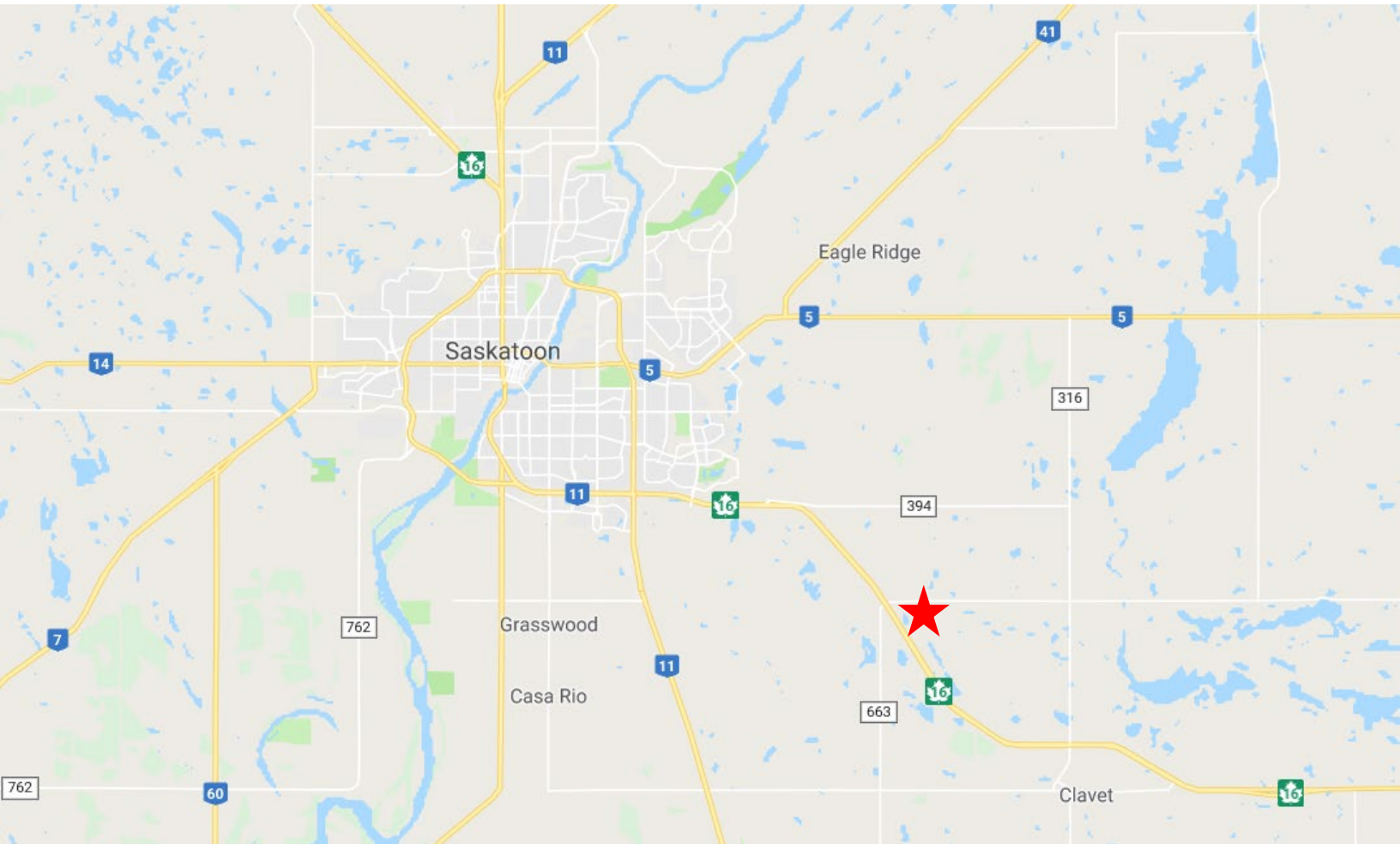
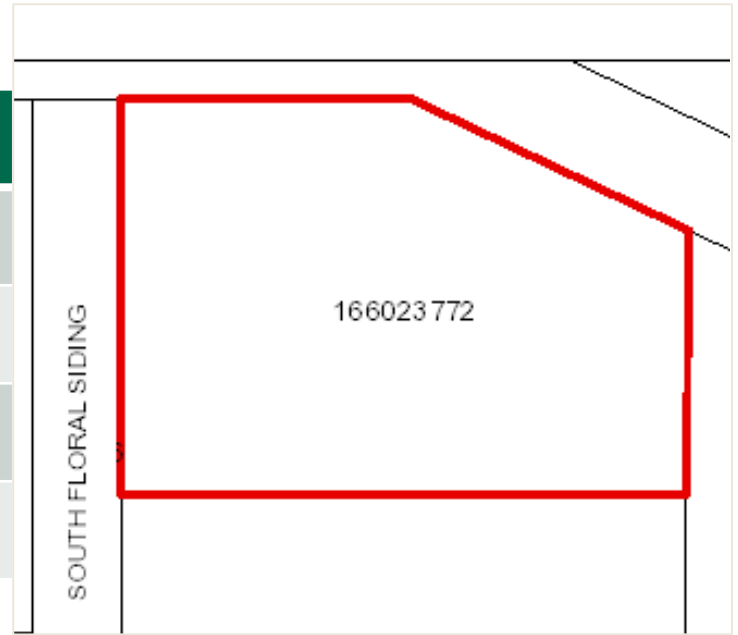
DALLON KUPROWSKI

Financial Analyst
+1 306 803 5983
dallon.kuprowski@cbre.com



LOCATION DETAILS

Site Size:	5.82 AC
Legal Description:	Parcel 166023772
Zoning:	M2
Availability:	Immediate
Lease Rate: (gross)	\$3,100.00 per month



This disclaimer shall apply to CBRE Limited, Real Estate Brokerage, and to all other divisions of the Corporation; to include all employees and independent contractors ("CBRE"). The information set out herein, including, without limitation, any projections, images, opinions, assumptions and estimates obtained from third parties (the "Information") has not been verified by CBRE, and CBRE does not represent, warrant or guarantee the accuracy, correctness and completeness of the Information. CBRE does not accept or assume any responsibility or liability, direct or consequential, for the Information or the recipient's reliance upon the Information. The recipient of the Information should take such steps as the recipient may deem necessary to verify the Information prior to placing any reliance upon the Information. The Information may change and any property described in the Information may be withdrawn from the market at any time without notice or obligation to the recipient from CBRE. CBRE and the CBRE logo are the service marks of CBRE Limited and/or its affiliated or related companies in other countries. All other marks displayed on this document are the property of their respective owners. All Rights Reserved.