



OFFICE SPACE FOR LEASE

8171 Ackroyd Rd., Richmond

Sanjay Sudra | 604.331.5256 | ssudra@warringtonpci.com



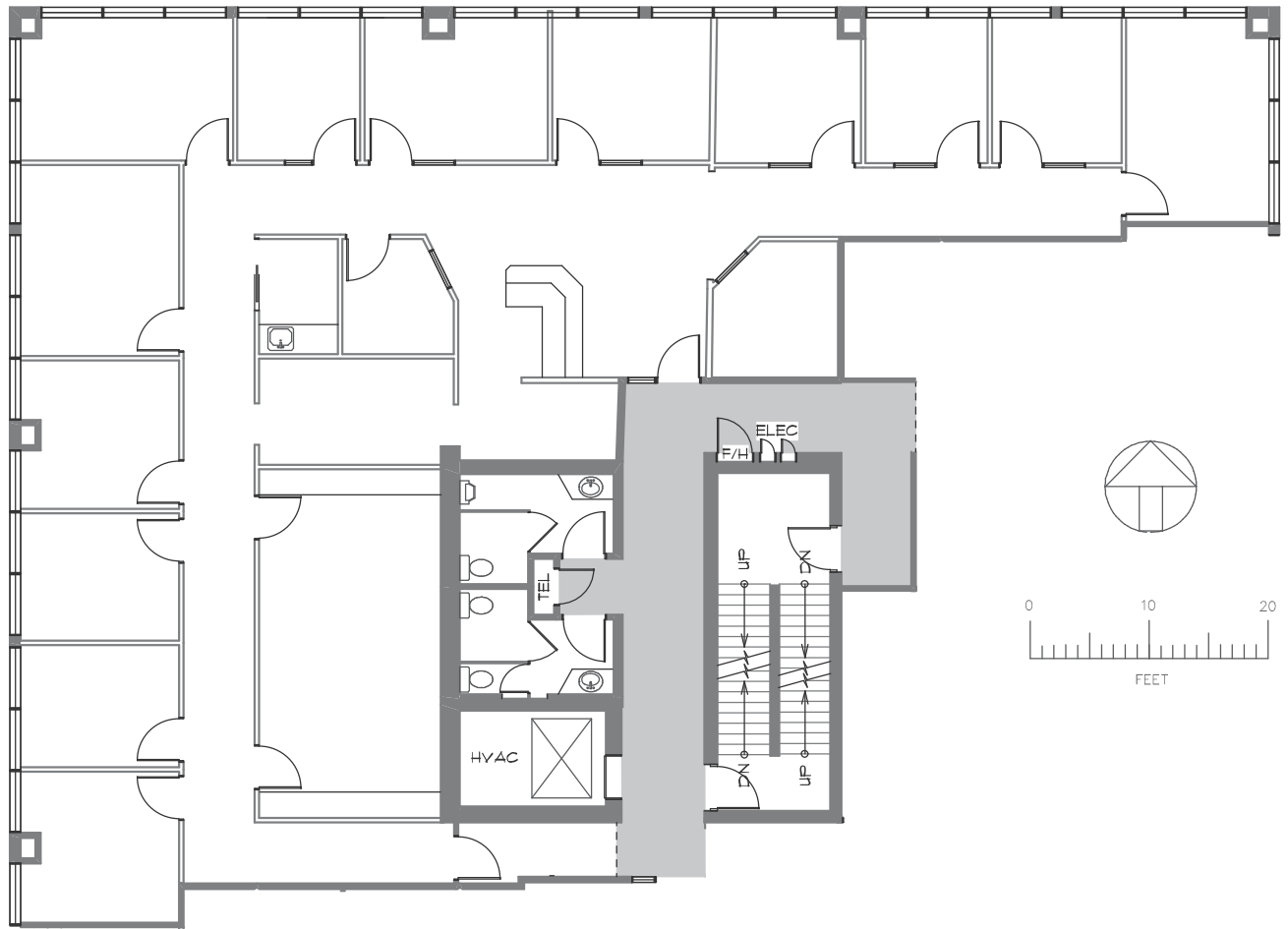
WARRINGTON PCI
MANAGEMENT

3000 - 8171 Ackroyd Rd., Richmond

BASIC RENT: \$19.00psf | ADDITIONAL RENT: \$23.71 psf (2022 est.)

Rentable Area: 3,813 sf | Available: Immediately

Direct exposure to elevators with 13 perimeter offices, a kitchenette, and a board room.



Sanjay Sudra 604 331 5256 ssudra@warringtonpci.com

300 - 1030 West Georgia St., Vancouver, BC V6E 2Y3

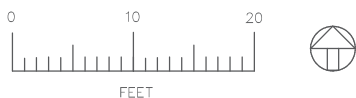
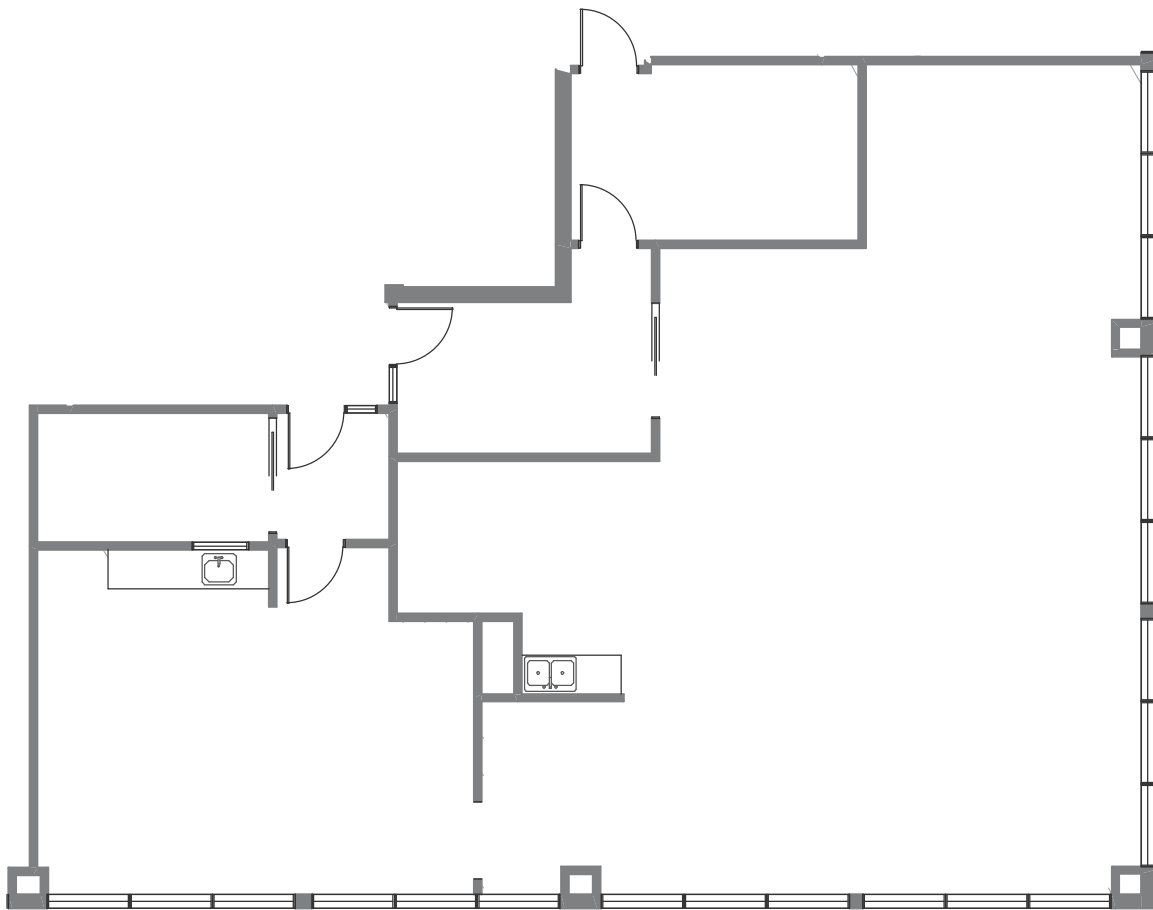
wpm
WARRINGTON PCI
MANAGEMENT

4050 - 8171 Ackroyd Rd., Richmond

BASIC RENT: \$17.00psf | ADDITIONAL RENT: \$23.71 psf (2022 est.)

Rentable Area: 2,520 sf | Available: Immediately

Open plan premises, including a reception and storage.



Sanjay Sudra 604 331 5256 ssudra@warringtonpci.com

300 – 1030 West Georgia St., Vancouver, BC V6E 2Y3

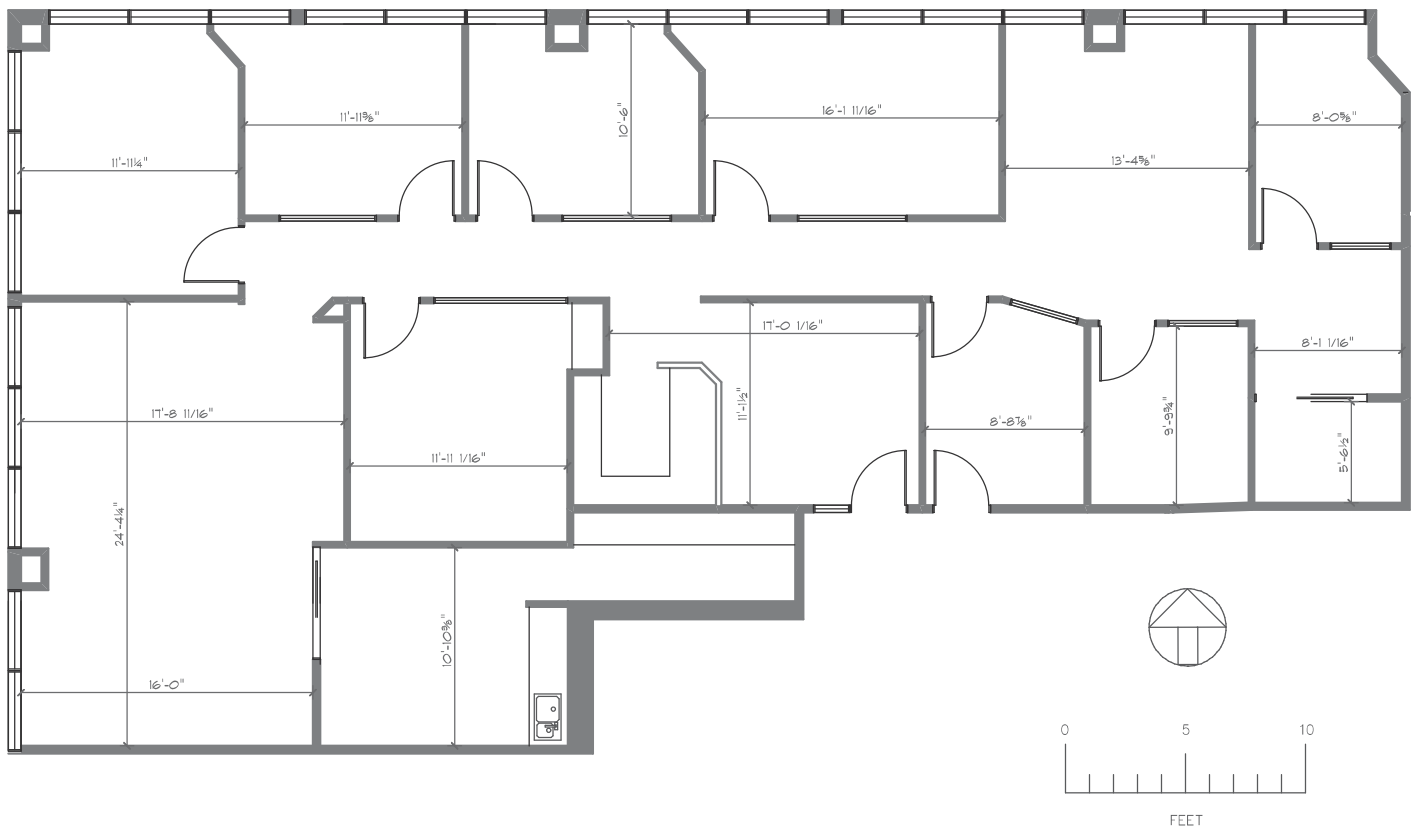
wpm
WARRINGTON PCI
MANAGEMENT

4080 - 8171 Ackroyd Rd., Richmond

BASIC RENT: \$21.00psf | ADDITIONAL RENT: \$23.71 psf (2022 est.)

Rentable Area: 2,905 sf | Available: Immediately

Premises is improved with reception desk, several perimeter and interior offices, kitchenette, and an open area.



Sanjay Sudra 604 331 5256 ssudra@warringtonpci.com

300 - 1030 West Georgia St., Vancouver, BC V6E 2Y3

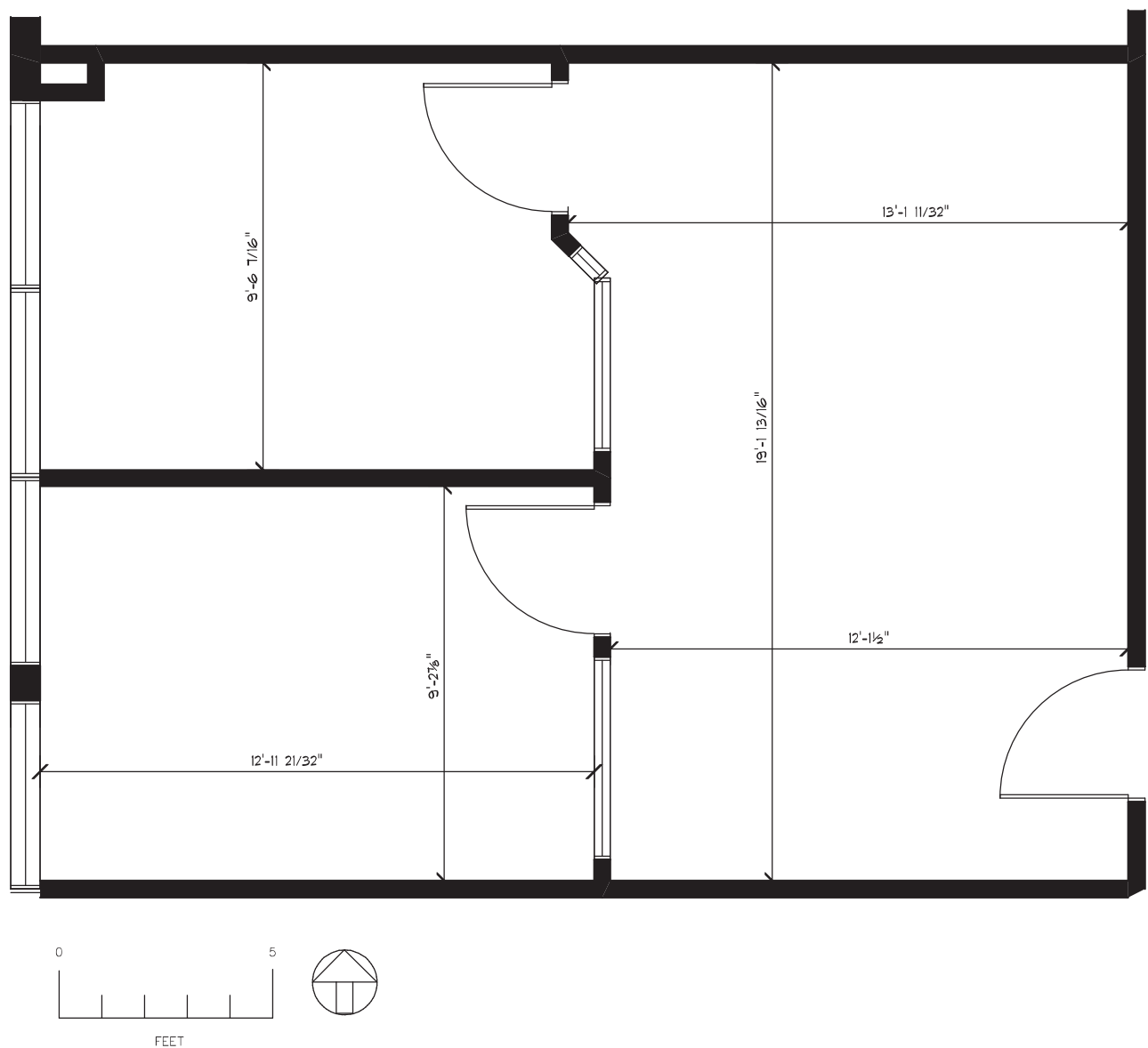
wpm
WARRINGTON PCI
MANAGEMENT

5070 - 8171 Ackroyd Rd., Richmond

BASIC RENT: \$21.00psf | ADDITIONAL RENT: \$23.71 psf (2022 est.)

Rentable Area: 618 sf | Available: Immediately

This space offers a reception area and two private offices.



Sanjay Sudra 604 331 5256 ssudra@warringtonpci.com

300 - 1030 West Georgia St., Vancouver, BC V6E 2Y3

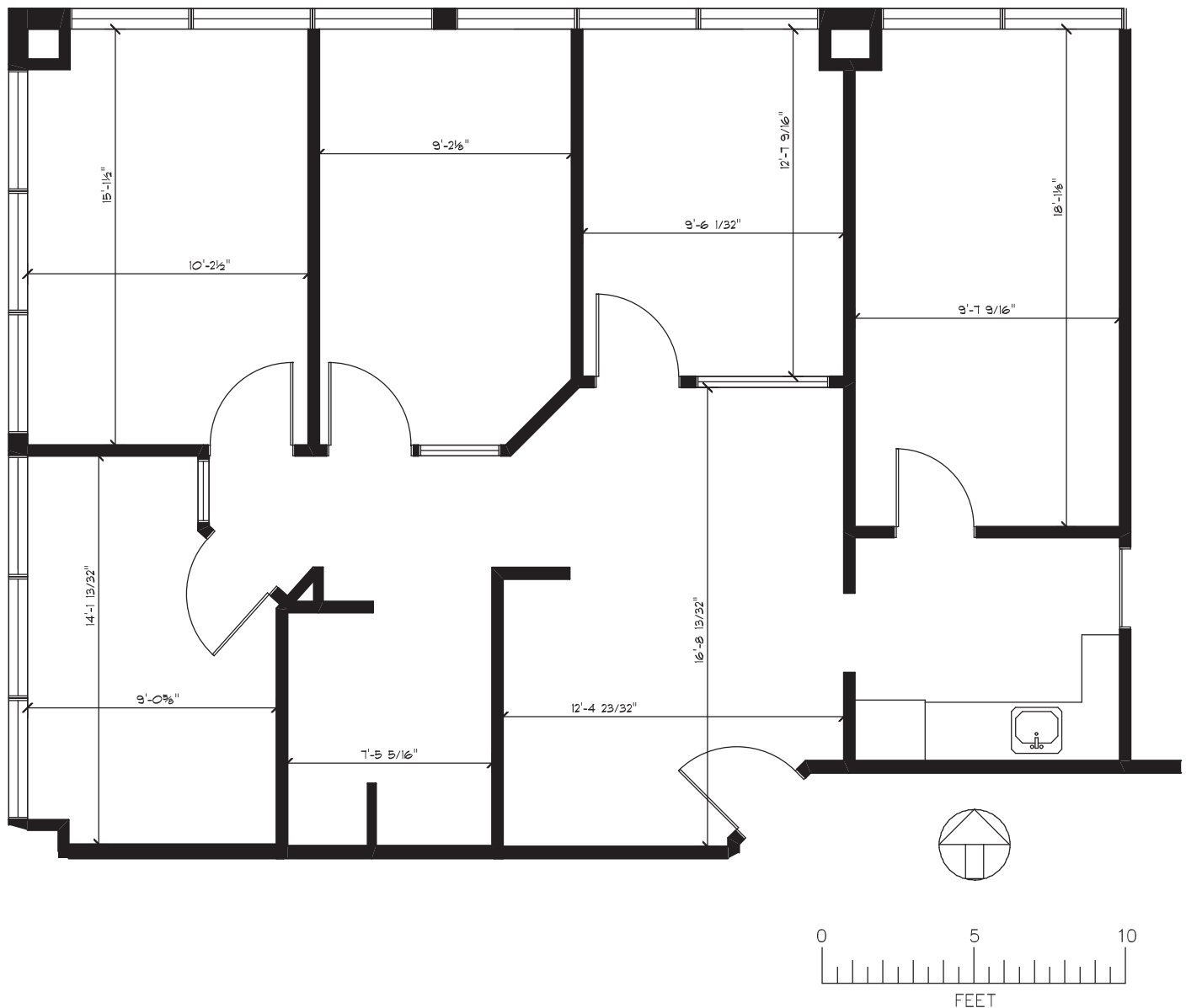
wpm
WARRINGTON PCI
MANAGEMENT

5080 - 8171 Ackroyd Rd., Richmond

BASIC RENT: \$20.00psf | ADDITIONAL RENT: \$23.71 psf (2022 est.)

Rentable Area: 1,440 sf | Available: Immediately

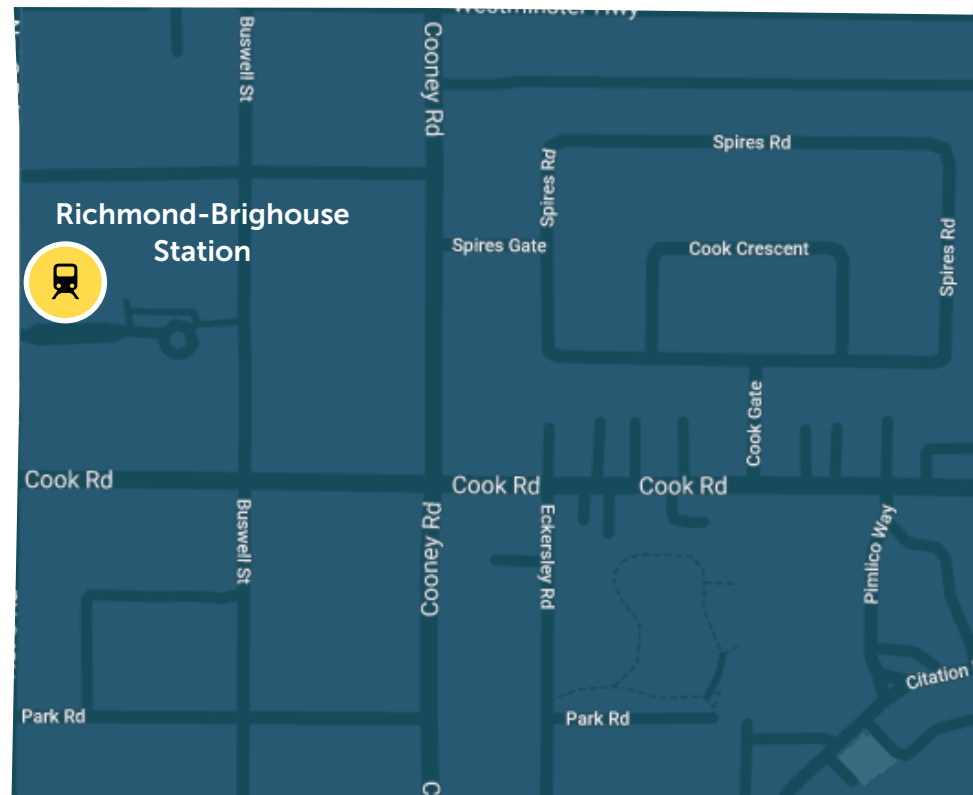
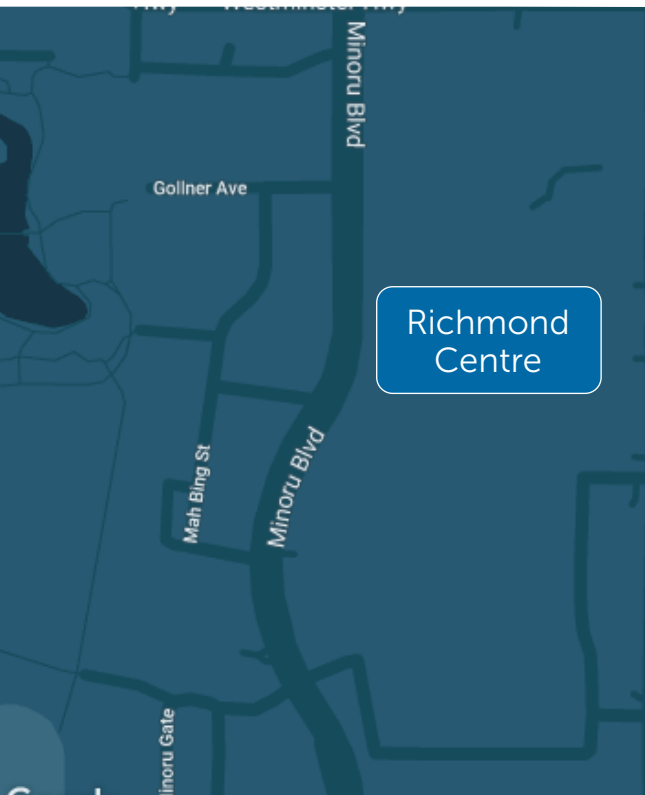
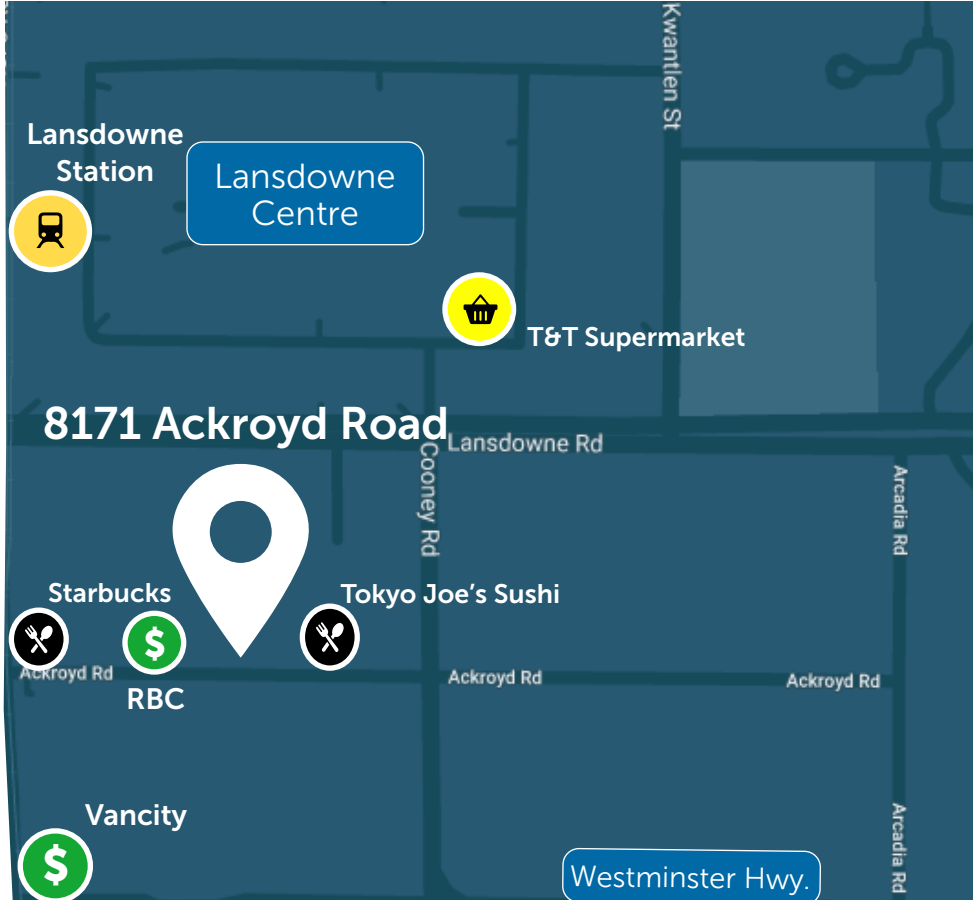
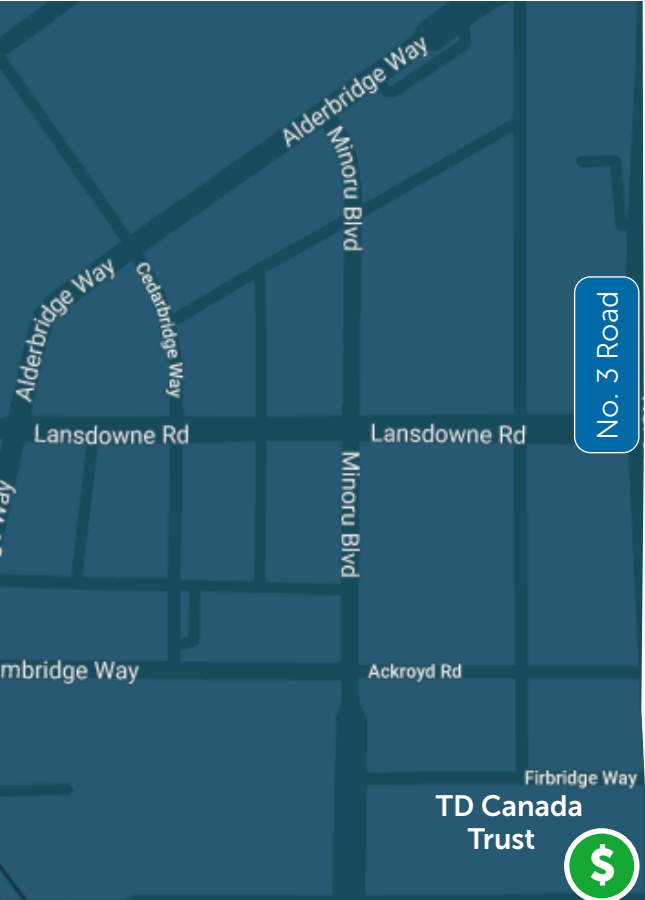
This space offers 4 private offices, a boardroom, and a kitchenette.



Sanjay Sudra 604 331 5256 ssudra@warringtonpci.com

300 - 1030 West Georgia St., Vancouver, BC V6E 2Y3

wpm
WARRINGTON PCI
MANAGEMENT



Property Features

1. Close proximity to numerous amenities such as grocery, restaurants, retail, transit, and more
2. 6 minute walk to Lansdowne Skytrain Station
3. Less than 1km to Richmond Centre
4. Walking distance to Canada's largest T&T Supermarket
5. Retail connected to property
6. 2nd level reserve parking