

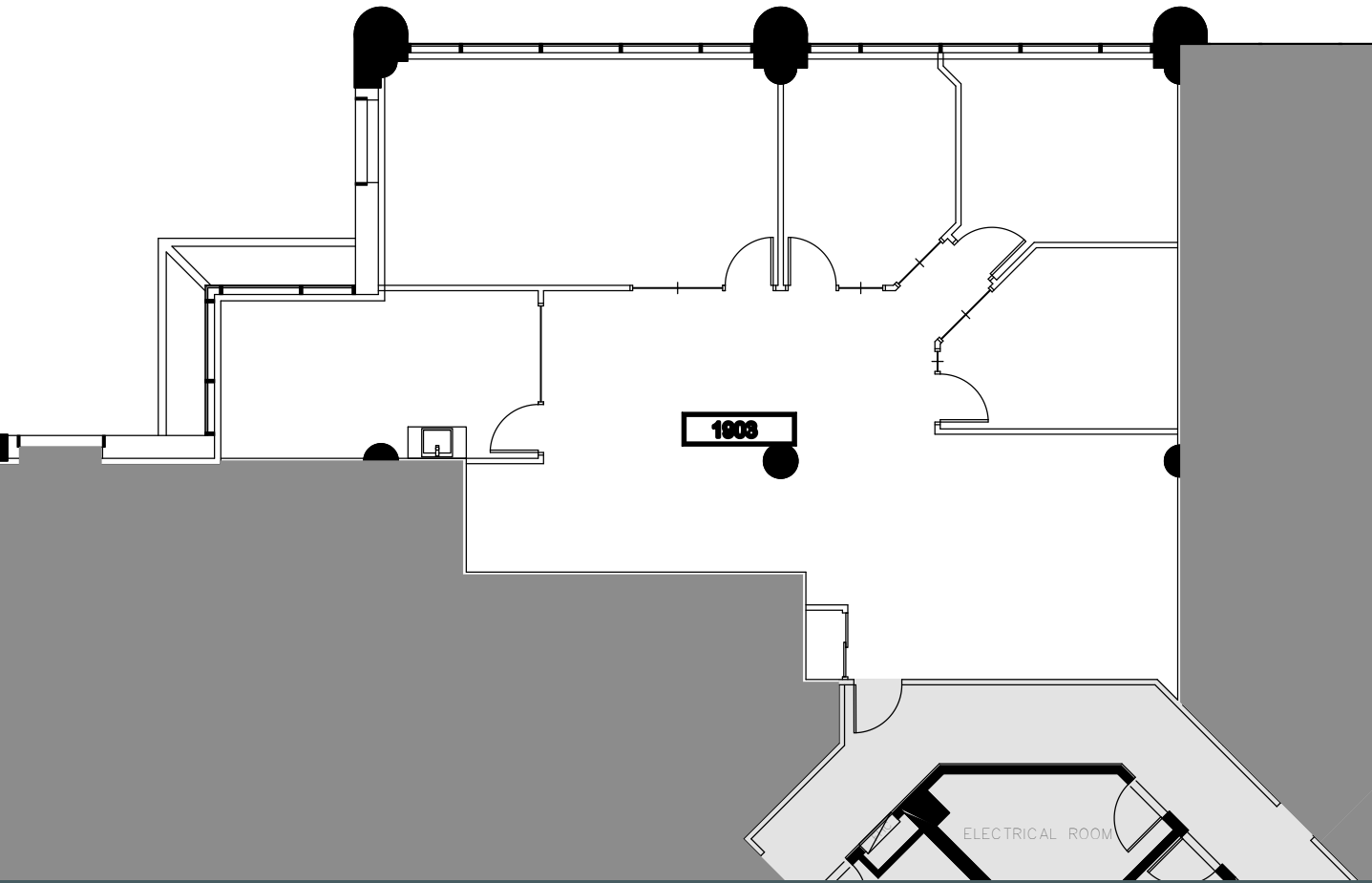
# UNIT PLAN

## Purdy's Wharf Tower II Suite 1903

1969 Upper Water Street  
Halifax Canada B3J 3R7

### CONTACT INFORMATION

GWL Realty Advisors Inc  
(902) 421-1122 | pwoneserve@gwlr.com

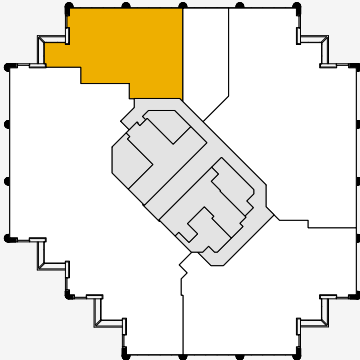


SUITE VIEW

### INFORMATION

**SUITE:** 19th floor, Suite 1903  
**RENTABLE AREA:** 2,226 sq.ft.

Purdy's Wharf Tower Two is a 22-storey Class "AAA" office building that is the prominent business address in Halifax. It is attractively located on the Waterfront and is connected to the Pedway system in Halifax's Central Business District. The building features a striking coloured glass and concrete exterior and the complex dominates the Halifax skyline.



KEY PLAN