

**419 - 1080 MAINLAND STREET, VANCOUVER**  
**TURNKEY OFFICE SPACE WITH PRIVATE BALCONY**

**FOR  
LEASE**



**WILLIAM | WRIGHT**

**RODERICK MACKAY**  
roderick@williamwright.ca  
604.428.5255





PRIME LOCATION

1 BLOCK FROM CANADA LINE

TURNKEY OFFICE SPACE

PRIVATE BALCONY

## 419 - 1080 Mainland Street, Vancouver

William Wright Commercial is pleased to present Unit 419 located at 1080 Mainland Street, offering 300 square feet of turnkey office space right in the heart of Yaletown. This open office unit features a private balcony, an alarm system, and full HVAC. The lobby entrance has been newly updated and two brand new elevators have been installed recently. The entrance to the subject unit overlooks a beautiful atrium located on the second floor, creating a very picturesque office environment.

# Salient Facts

## SIZE

+/- 300 SQFT

## PARKING

1 @ \$175/ Month

## ZONING

HA-3

## MONTHLY RENT

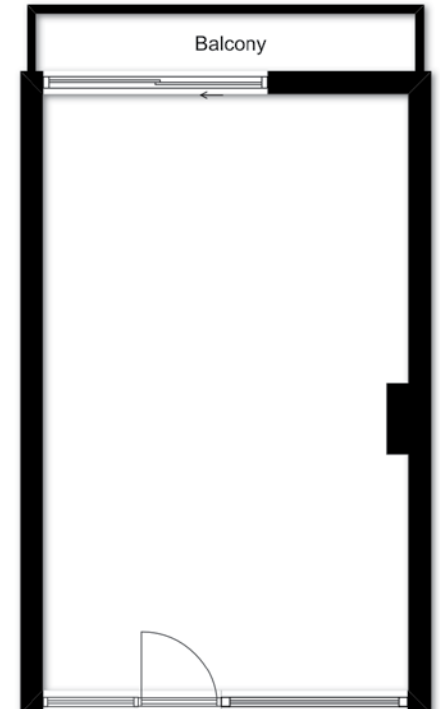
\$1,600 + GST

## AVAILABLE

Immediately



PATIO VIEW



## Location

Strategically located in the heart of Yaletown, the area features high foot traffic and accessible intersecting transit routes to many of Yaletown's world-class restaurants, cafes, trendy boutiques, and neighborhood amenities, along with a rich combination of tech and business service offices. The area is extremely well situated for public transportation, steps away from the Canada Line Skytrain, which connects Yaletown with the Downtown Core, Waterfront Station, the Olympic Village, Vancouver International Airport, and Richmond.



## Transit

The area is extremely well situated for public transportation, with a Transit score of 100. Only a 1 minute walk away from the Canada Line Skytrain, which connects Yaletown with the Downtown Core, Waterfront Station, Olympic Village, Vancouver International Airport, and Richmond.



### SUBJECT PROPERTY DISTANCES

|                              |              |
|------------------------------|--------------|
| YALETOWN-ROUNDHOUSE SKYTRAIN | 2 MIN DRIVE  |
| YVR AIRPORT                  | 20 MIN DRIVE |
| SURREY                       | 40 MIN DRIVE |

## FOR MORE INFORMATION CONTACT

**RODERICK MACKAY**  
 roderick@williamwright.ca  
 604.428.5255



**100**  
 TRANSIT SCORE



**99**  
 WALK SCORE



**88**  
 BIKE SCORE