

FOR LEASE

# 3555 GILMORE WAY

Burnaby, BC



**3rd Floor: 20,256 SF Available**  
**Demising Option Available (2,040 SF to 20,256 SF)**  
**Full Floor Opportunity**





## OPPORTUNITY

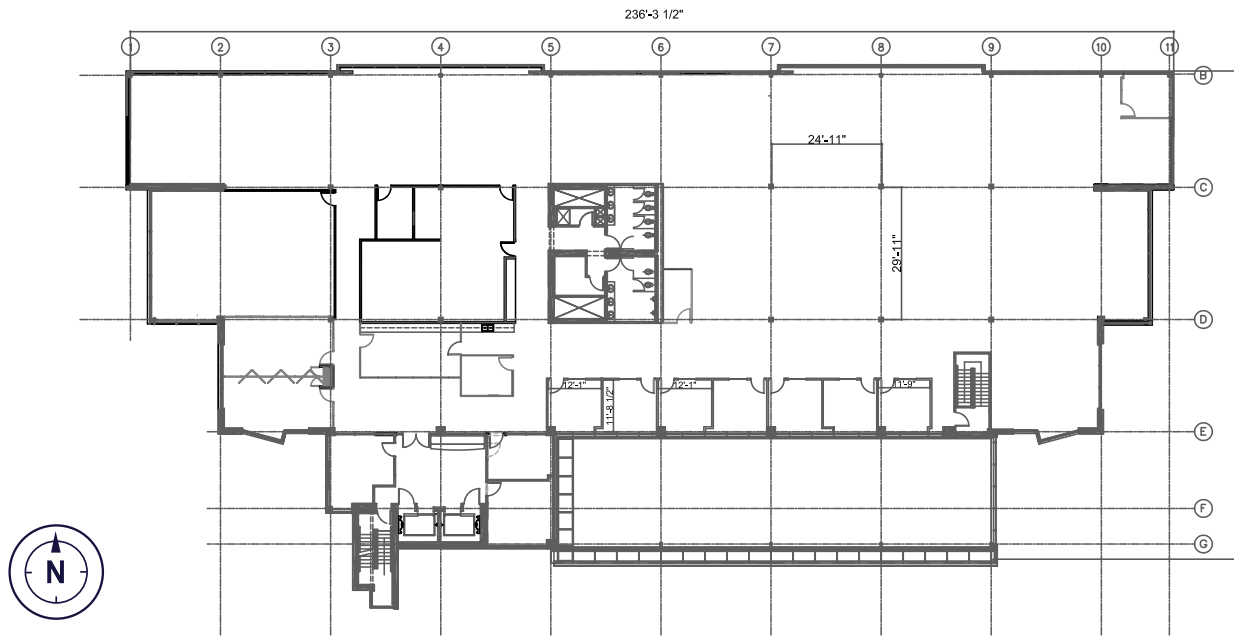
The entire 3rd floor is available for lease, offering 20,256 SF of high quality office space. The efficient floor plate and generous natural light create an ideal environment for a variety of workplace strategies, from collaborative layouts to private office configurations.

## LOCATION

Positioned within Burnaby's established and rapidly evolving Discovery Park District, 3555 Gilmore Way offers exceptional access to transit and major transportation corridors. The property is minutes from Gilmore SkyTrain Station and Highway 1, providing convenient connectivity across Metro Vancouver. Proximity to Brentwood Town Centre and Lougheed further enhances the appeal of this well located business address within a growing employment node.

In addition to nearby retail and services, tenants enjoy the convenience of an on site café at ground level, ideal for informal meetings or quick breaks during the day. Continued development in the surrounding area contributes to a dynamic and increasingly amenity rich business environment.

# FLOOR PLAN



## PREMISES DETAILS

<b>SUITE</b>	3rd Floor
<b>SIZE:</b>	20,256 SF Demisable 2,040 SF to 20,256 SF
<b>BASIC RENT</b>	Contact listing agents
<b>ADDITIONAL RENT</b>	\$17.74 PSF pa (including taxes and in-suite janitorial; 2026 est.)
<b>AVAILABILITY</b>	Available Q3 2026
<b>PARKING</b>	2.5 stalls per 1,000 SF Underground parking

## BUILDING AMENITIES



End-of-trip showers



Secure bike storage



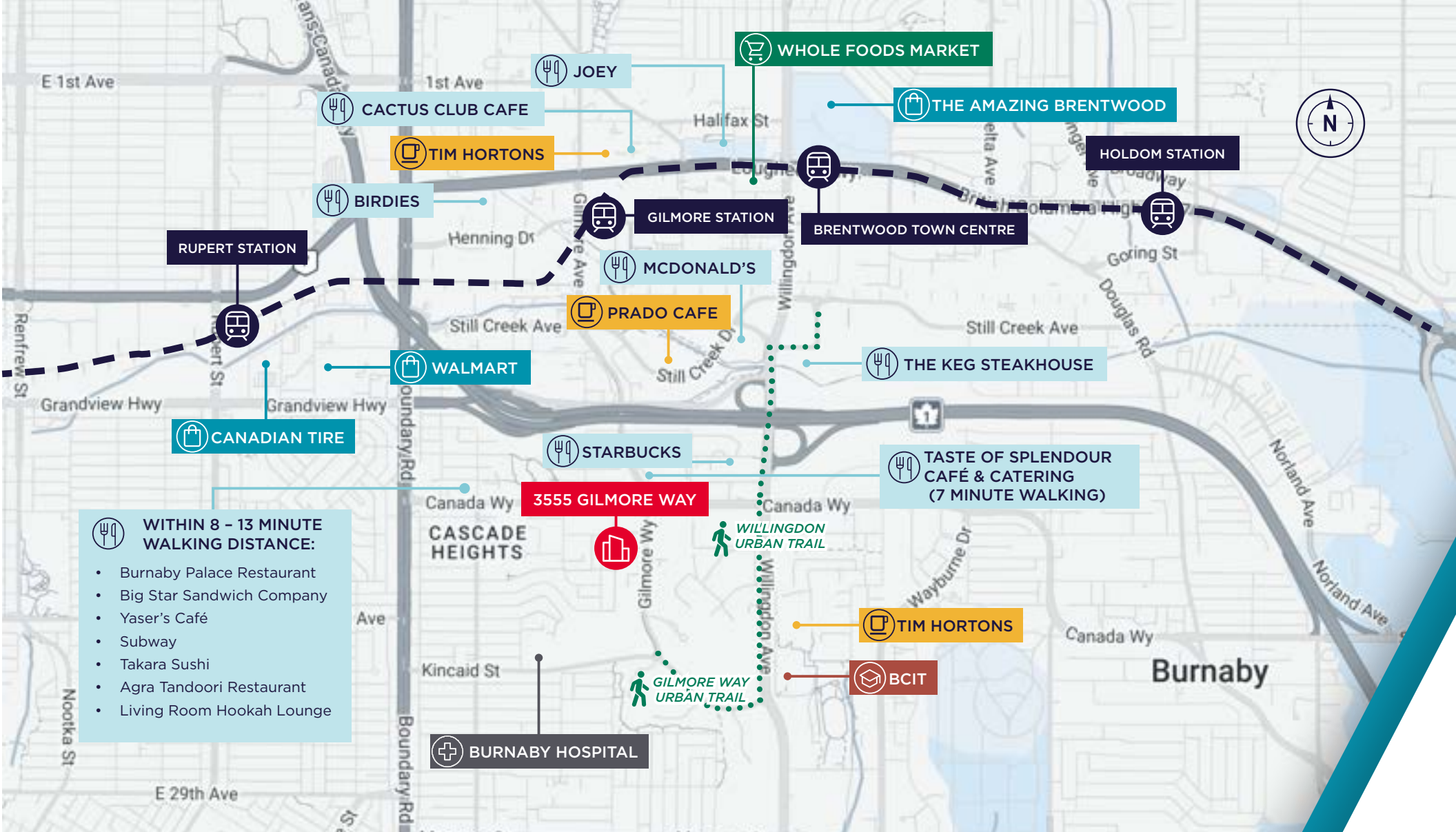
Fitness Centre



Café on the ground floor



Atrium area



- WITHIN 8 - 13 MINUTE WALKING DISTANCE:**
- Burnaby Palace Restaurant
  - Big Star Sandwich Company
  - Yaser's Café
  - Subway
  - Takara Sushi
  - Agra Tandoori Restaurant
  - Living Room Hookah Lounge

**For more information, please contact:**

**MAX ZESSEL**  
 Personal Real Estate Corporation  
 Senior Vice President  
 +1 604 640 5824  
 max.zessel@cushwake.com

**ROGER LEGGATT**  
 Personal Real Estate Corporation  
 Executive Vice President  
 +1 604 640 5882  
 roger.leggatt@cushwake.com

**ROBERT STOKES**  
 Executive Vice President  
 Industrial/Investment Sales & Leasing  
 +1 604 644 1126.  
 robert.stokes@cushwake.com

**ETHAN REGAN**  
 Associate  
 Commercial Sales & Leasing  
 +1 604 902 4649  
 ethan.regan@cushwake.com

©2026 Cushman & Wakefield. All rights reserved. The information contained in this communication is strictly confidential. This information has been obtained from sources believed to be reliable but has not been verified. NO WARRANTY OR REPRESENTATION, EXPRESS OR IMPLIED, IS MADE AS TO THE CONDITION OF THE PROPERTY (OR PROPERTIES) REFERENCED HEREIN OR AS TO THE ACCURACY OR COMPLETENESS OF THE INFORMATION CONTAINED HEREIN, AND SAME IS SUBMITTED SUBJECT TO ERRORS, OMISSIONS, CHANGE OF PRICE, RENTAL OR OTHER CONDITIONS, WITHDRAWAL WITHOUT NOTICE, AND TO ANY SPECIAL LISTING CONDITIONS IMPOSED BY THE PROPERTY OWNER(S). ANY PROJECTIONS, OPINIONS OR ESTIMATES ARE SUBJECT TO UNCERTAINTY AND DO NOT SIGNIFY CURRENT OR FUTURE PROPERTY PERFORMANCE. PD-171433\_v6

