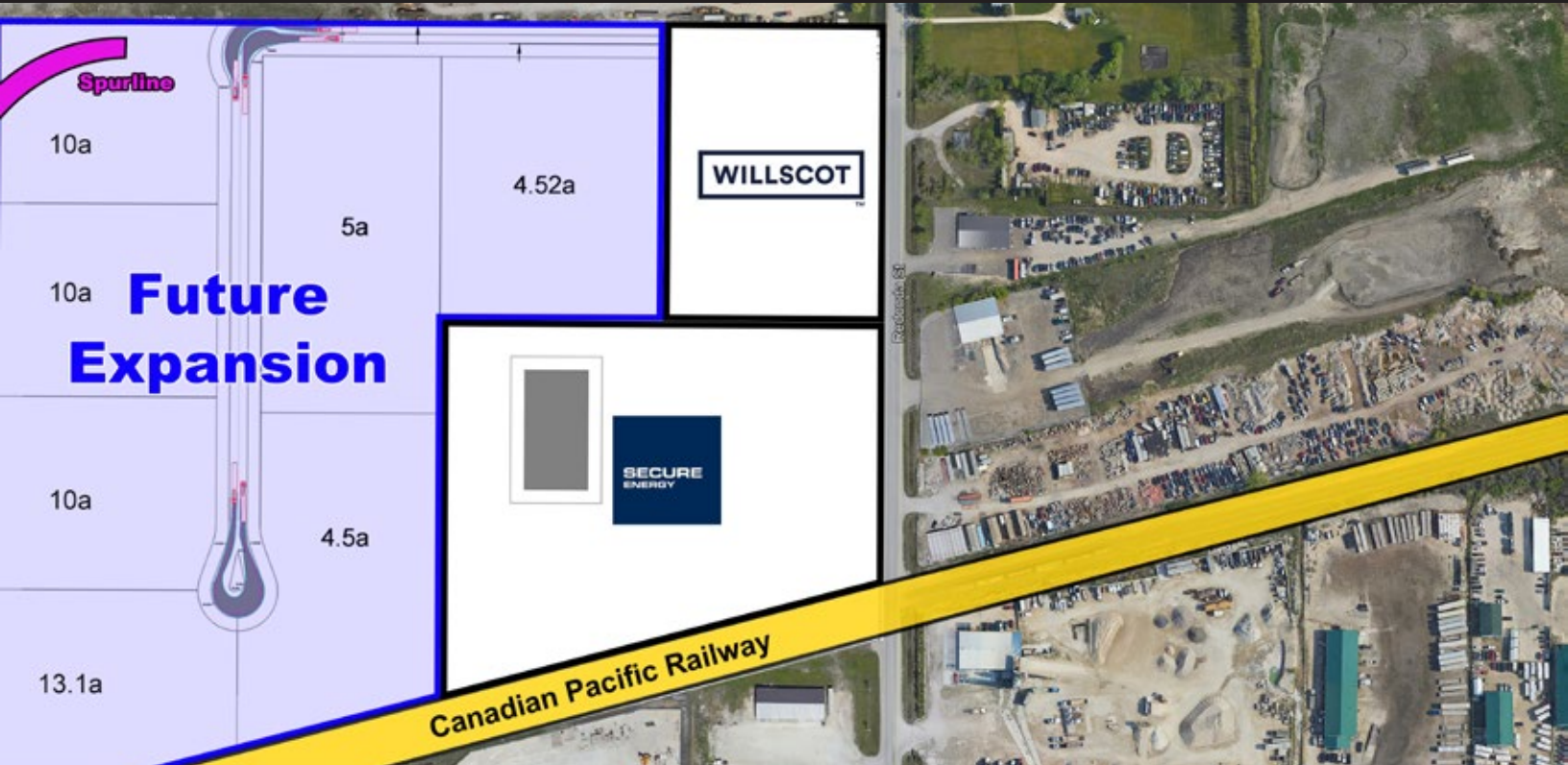


# FOR LEASE

Industrial Land Available for Lease with Rail Access

999 Redonda Street , RM of Springfield, Manitoba

## INDUSTRIAL OUTDOOR STORAGE OPPORTUNITY



### PROPERTY SUMMARY

Available Lots from 4.5 to 13.1+ acres

Gross Lease Rate Starting at \$2,000/acre/month

Zoning MG - Manufacturing General

### LOCATION

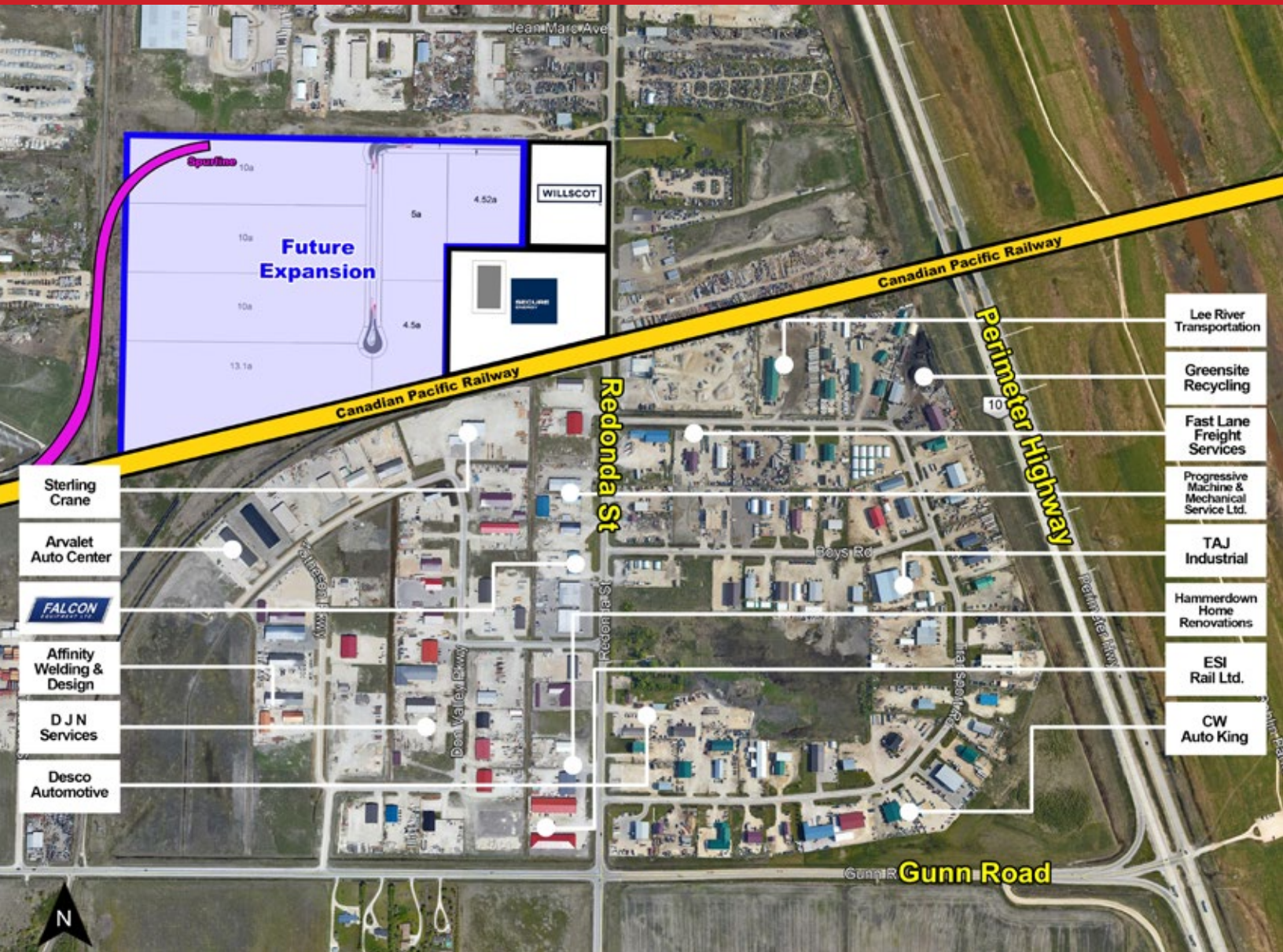
- Located in the RM of Springfield, in Transcona North.
- Just inside the east Perimeter Highway, between Gunn Road and Springfield Road.

### FEATURES

- Rail access.
- Land is 72 +/- acres. - subdivided into parcels from 4.5 to 13.1+ acres.
- Landlord will consider built to suit option.
- Possible uses: Distribution, manufacturing facilities, compound area, truck & trailer parking, trans load facility - rail to truck/truck to rail.

# FOR LEASE

999 Redonda Street , RM of Springfield, Manitoba



FOR MORE INFORMATION, PLEASE CONTACT:

**Mark Scaletta**

Vice President, Industrial  
P (204) 928-8223  
C (204) 510-3754  
[mscaletta@shindico.com](mailto:mscaletta@shindico.com)

**Robert Scaletta**

Senior Vice President, Industrial  
P (204) 928-8242  
C (204) 223-9777  
[rscaletta@shindico.com](mailto:rscaletta@shindico.com)

**Murray Goodman**

Senior Vice President, Industrial & Investment  
P (204) 928-8228  
C (204) 990-4800  
[mgoodman@shindico.com](mailto:mgoodman@shindico.com)

**Shindico Realty Inc.**

200-1355 Taylor Avenue  
Winnipeg, Manitoba R3M 3Y9  
P (204) 474-2000  
[inquire@shindico.com](mailto:inquire@shindico.com)  
[www.shindico.com](http://www.shindico.com)

# Shindico

*Succeeding by Helping Others Succeed*

**CORFAC**  
INTERNATIONAL



*Shindico is dedicated to the protection of the environment and the communities that we are a part of.*

The accuracy of the information set out herein has not been confirmed, and Shindico Realty Inc. and its affiliates make no representations or warranties as to the accuracy of the information and assumes no responsibility for errors or omissions. The recipient is responsible to verify the accuracy of any information and bears all risk related to any inaccuracies.031125