

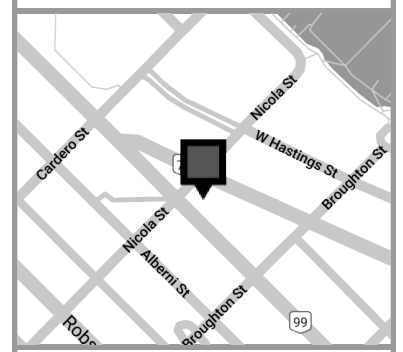
Gilic Developments

| | |
|-------------|----------------------|
| Version | Created: 01/13/2020 |
| FP1B | Measured: 10/31/2019 |

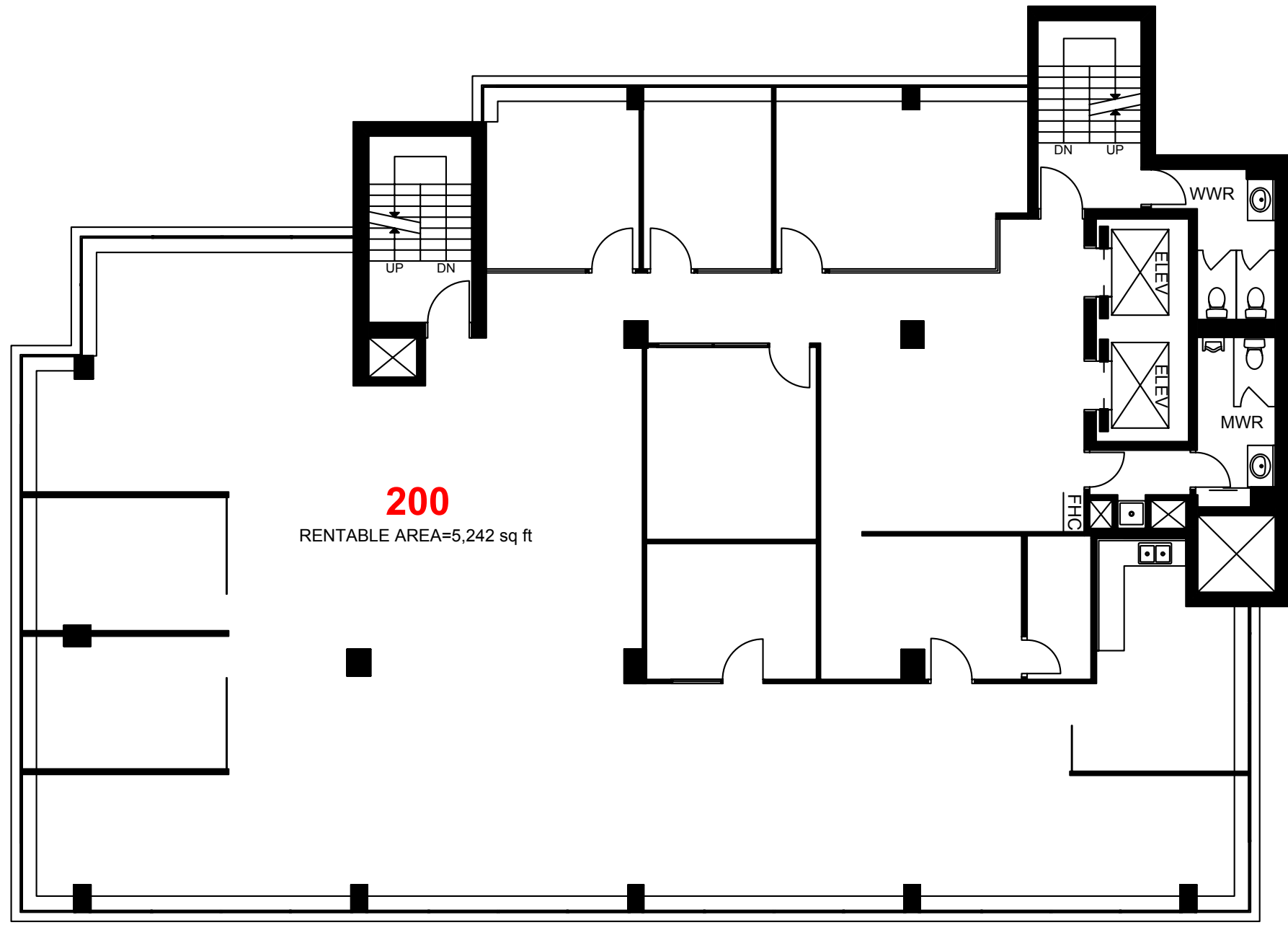
1455 West Georgia Street
Vancouver, British Columbia,
Canada

Floor 02

Total Floor Rentable Area: 5,242 sq ft



This work product has been prepared by Extreme Measures Inc. pursuant to a contract with the Client for the sole benefit of and use by the Client. No third party may rely on this work product without the receipt of a reliance letter from Extreme Measures Inc.



200
RENTABLE AREA=5,242 sq ft

