

FOR LEASE

INDUSTRIAL FLEX SPACE

600 *Windmill Road*

DARTMOUTH



Multiple Units Available



Industrial Flex Space



Signage Opportunities



Ample Surface Parking

Unit 2: 5,017 SF
+ 2,466 SF mezzanine

Unit 5: 4,000 SF



Burnside Overview

This active retail and light industrial complex offers bright ground floor commercial space on Burnside's main street, Windmill Road. The high-demand Burnside business and industrial park consists of over 2,000 businesses and is home to ±30,000 employees and continues to grow. Burnside is the largest industrial park north of Boston and East of Montreal and is easily accessed by Highway 111 and 118. 600 Windmill Road is located in close proximity to the Harbour Bridges, Downtown Halifax and Bedford.

Burnside Industrial Park Highlights

- 10 km from Downtown Halifax
- Directly accessible from Highways 111 and 118
- 5 km from Ceres Container Terminal
- 11 km from Halterm Container Terminal
- 21 km from Halifax International Airport

Area Demographics

\$94,167

Average Household Income (5km)

130,033

Daytime Population (5km)

36.7

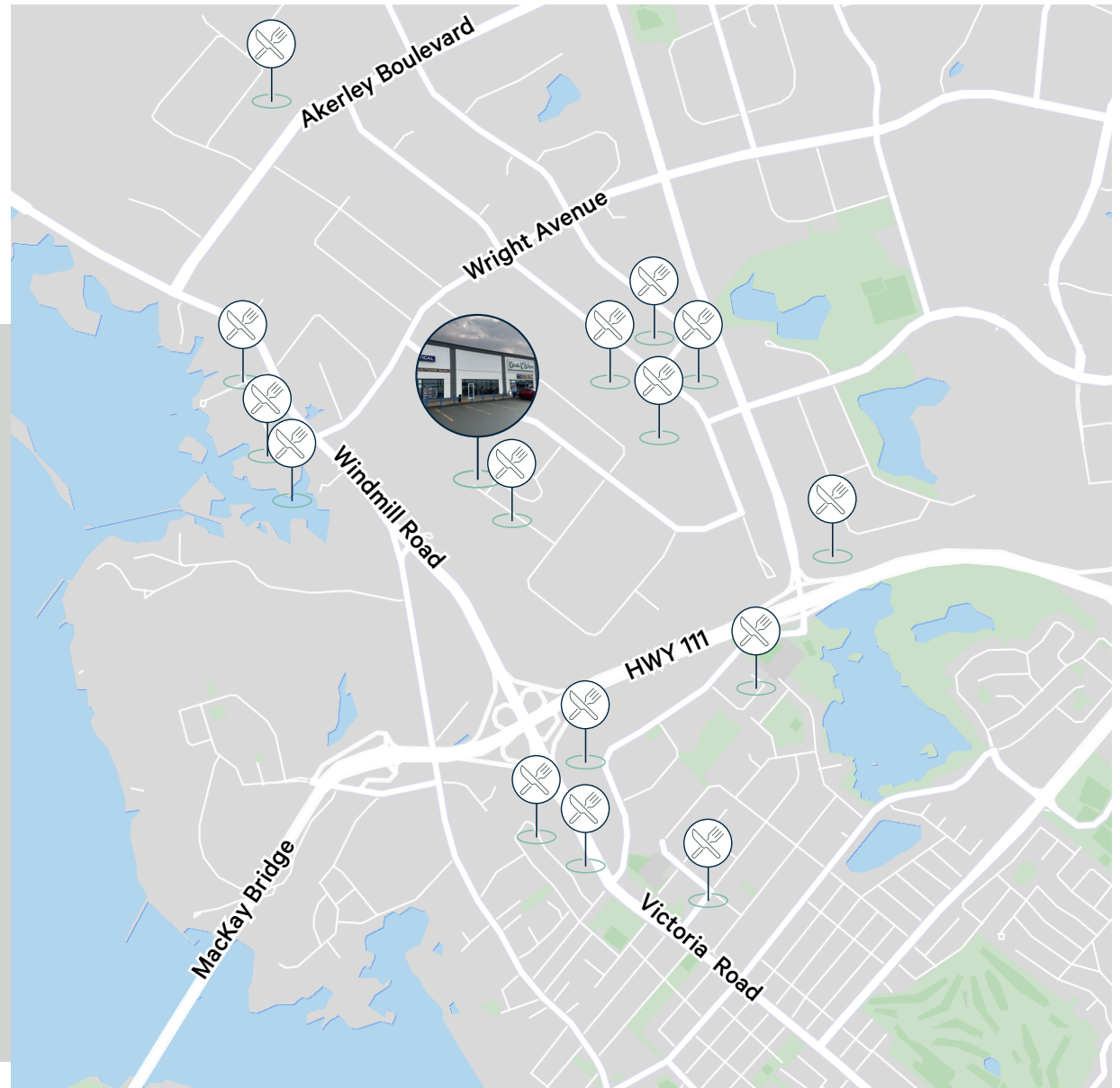
Median Age (5km)



The Opportunity

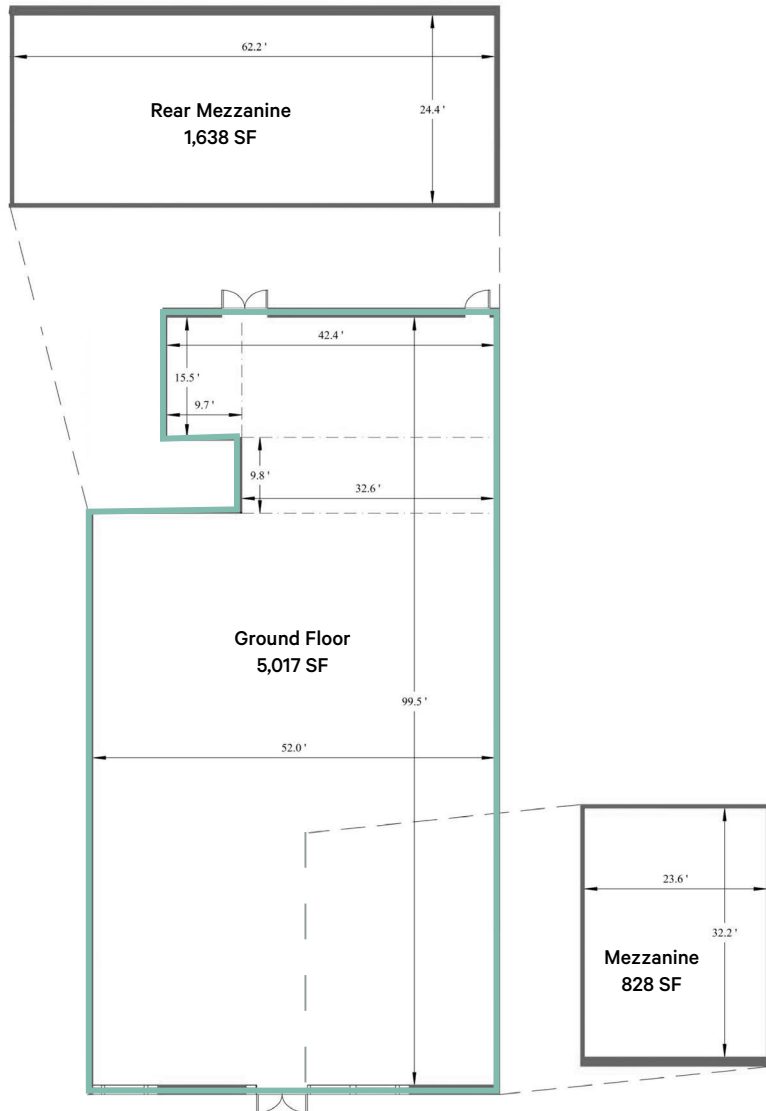
Prime industrial flex space located in Burnside, Dartmouth's industrial hub

- Civic Address:** 600 Windmill Road, Dartmouth, NS
- Property Type:** Industrial flex space
- Availabilities:**
 - Unit 2:** 5,017 SF (+2,466 SF mezzanine)
 - Unit 5:** 4,000 sq. ft.
- Net Rent:** Please contact
- Additional Rent:** \$13.84 PSF
- Available:** Immediately
- Loading:** Grade loading
- Parking:** Free on-site parking
- Signage:** Available on building & pylon (Subject to availability)



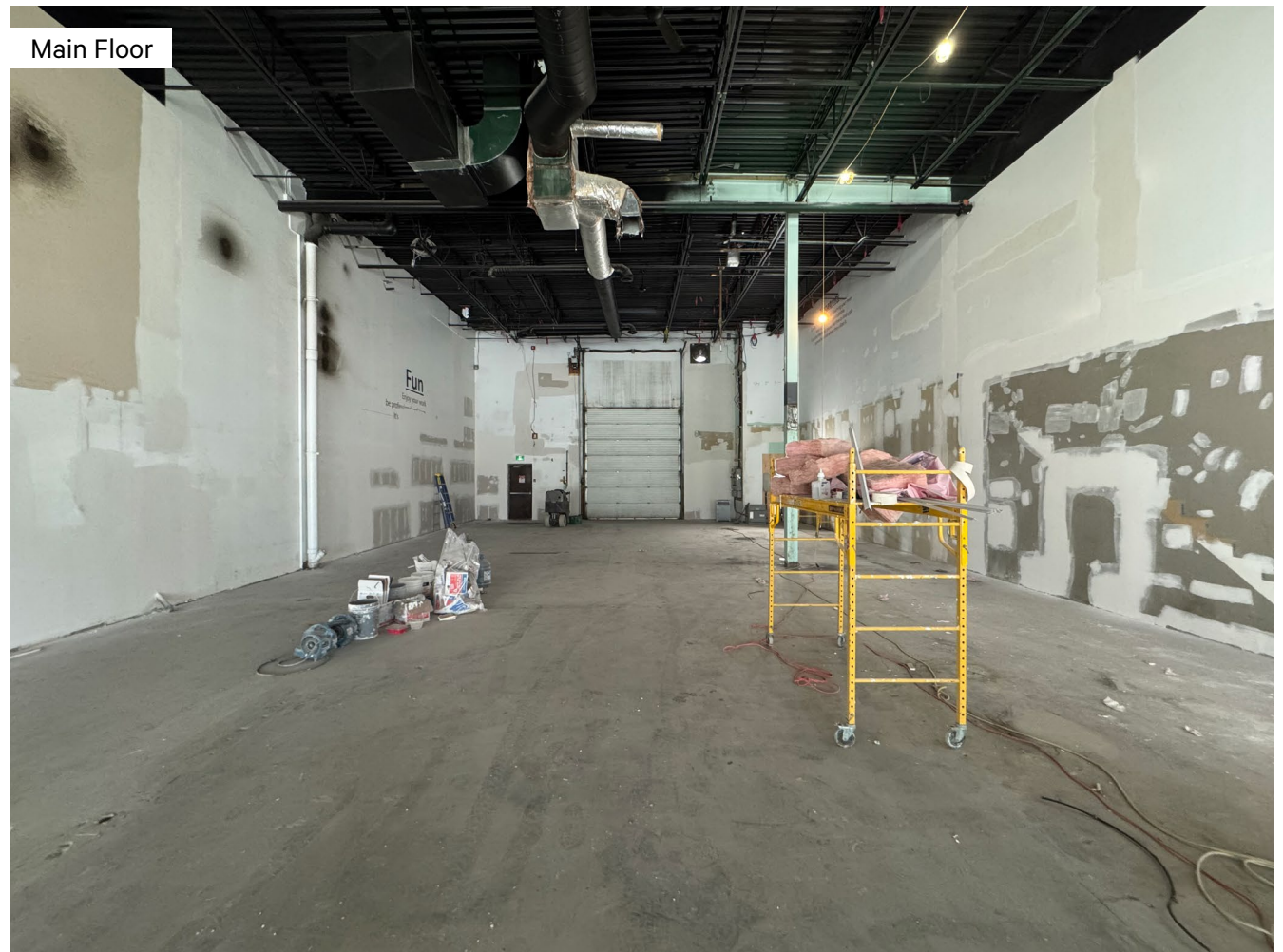
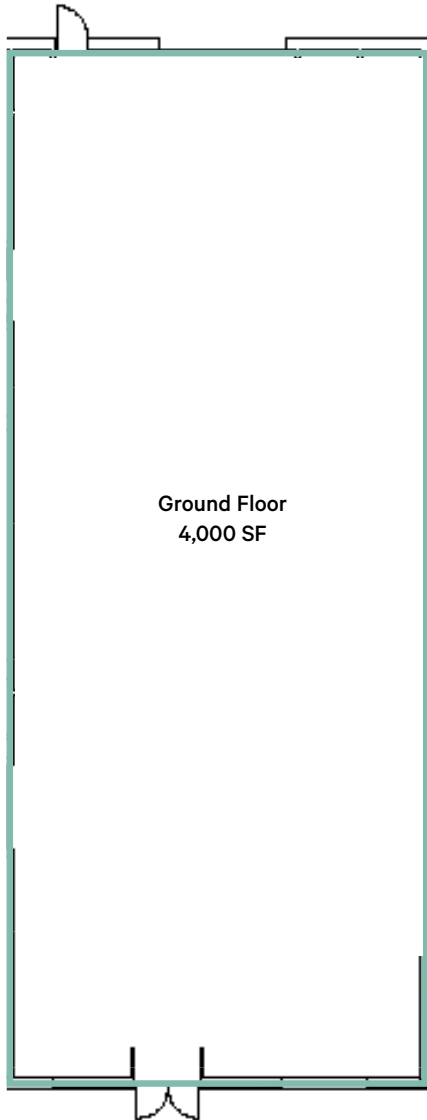
Unit 2

Floor Plan & Photos



Unit 5

Floor Plan & Photos



INDUSTRIAL FLEX SPACE FOR LEASE

CBRE

600 *Windmill Road*

DARTMOUTH

For more information, please contact:

Donald Tabor

Senior Sales Associate

902 492 2061

donald.tabor@cbre.com



This disclaimer shall apply to CBRE Limited, Real Estate Brokerage, and to all other divisions of the Corporation; to include all employees and independent contractors ("CBRE"). All references to CBRE Limited herein shall be deemed to include CBRE, Inc. The information set out herein, including, without limitation, any projections, images, opinions, assumptions and estimates obtained from third parties (the "Information") has not been verified by CBRE, and CBRE does not represent, warrant or guarantee the accuracy, correctness and completeness of the Information. CBRE does not accept or assume any responsibility or liability, direct or consequential, for the Information or the recipient's reliance upon the Information. The recipient of the Information should take such steps as the recipient may deem necessary to verify the Information prior to placing any reliance upon the Information. The Information may change and any property described in the Information may be withdrawn from the market at any time without notice or obligation to the recipient from CBRE. CBRE and the CBRE logo are the service marks of CBRE Limited and/or its affiliated or related companies in other countries. All other marks displayed on this document are the property of their respective owners. All Rights Reserved.