



**AVISON  
YOUNG**

**The Wrigley Building**  
Creative Loft Space  
Toronto, ON

## 235 Carlaw Avenue

### Details

Asking Rate: Contact Listing Agents

Suite 600 | 8,573 sf - Exclusive Private Terrace

Suite 410 | 7,200 sf

Suite 405 | 4,000 sf - LEASED

Suite 403 | 5,100 sf

Suite 100 | 9,800 sf - LEASED

### Location Overview

- Located near Carlaw Avenue and Queen Street East, in the popular East End
- South Riverdale & Leslieville neighbourhood amenities
- Great access to public transit
- High ceiling loftspace with ready to go improvements

**Get more  
information**

**Richard McWhirter**

Principal, Sales Representative

416 673 4032

[Richard.McWhirter@avisonyoung.com](mailto:Richard.McWhirter@avisonyoung.com)

**Daniel Tsiampas**

Associate, Sales Representative

647 967 7820

[Daniel.Tsiampas@avisonyoung.com](mailto:Daniel.Tsiampas@avisonyoung.com)

**MEMNON**

**AVISON  
YOUNG**

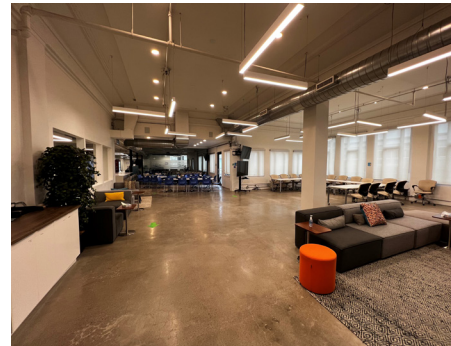
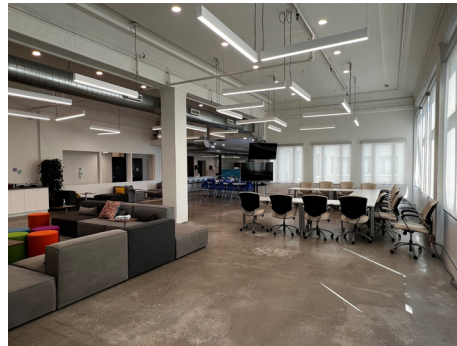
©2023. Avison Young. Information contained herein was obtained from sources deemed reliable and, while thought to be correct, have not been verified. Avison Young does not guarantee the accuracy or completeness of the information presented, nor assumes any responsibility or liability for any errors or omissions therein.



# Suite 600 | 8,573 sf

**The Wrigley Building**  
235 Carlaw Avenue, Toronto, ON M4M 2S1

- Stunning downtown views
- Spacious exclusive private terrace
- Massive natural light – 11' x 17' operable windows
- 14 foot exposed ceilings
- Parking can be made available (\$210/month)
- Open concept with a mix of offices



**Get more  
information**

**Richard McWhirter**

Principal, Sales Representative

416 673 4032

[Richard.McWhirter@avisonyoung.com](mailto:Richard.McWhirter@avisonyoung.com)

**Daniel Tsiampas**

Associate, Sales Representative

647 967 7820

[Daniel.Tsiampas@avisonyoung.com](mailto:Daniel.Tsiampas@avisonyoung.com)

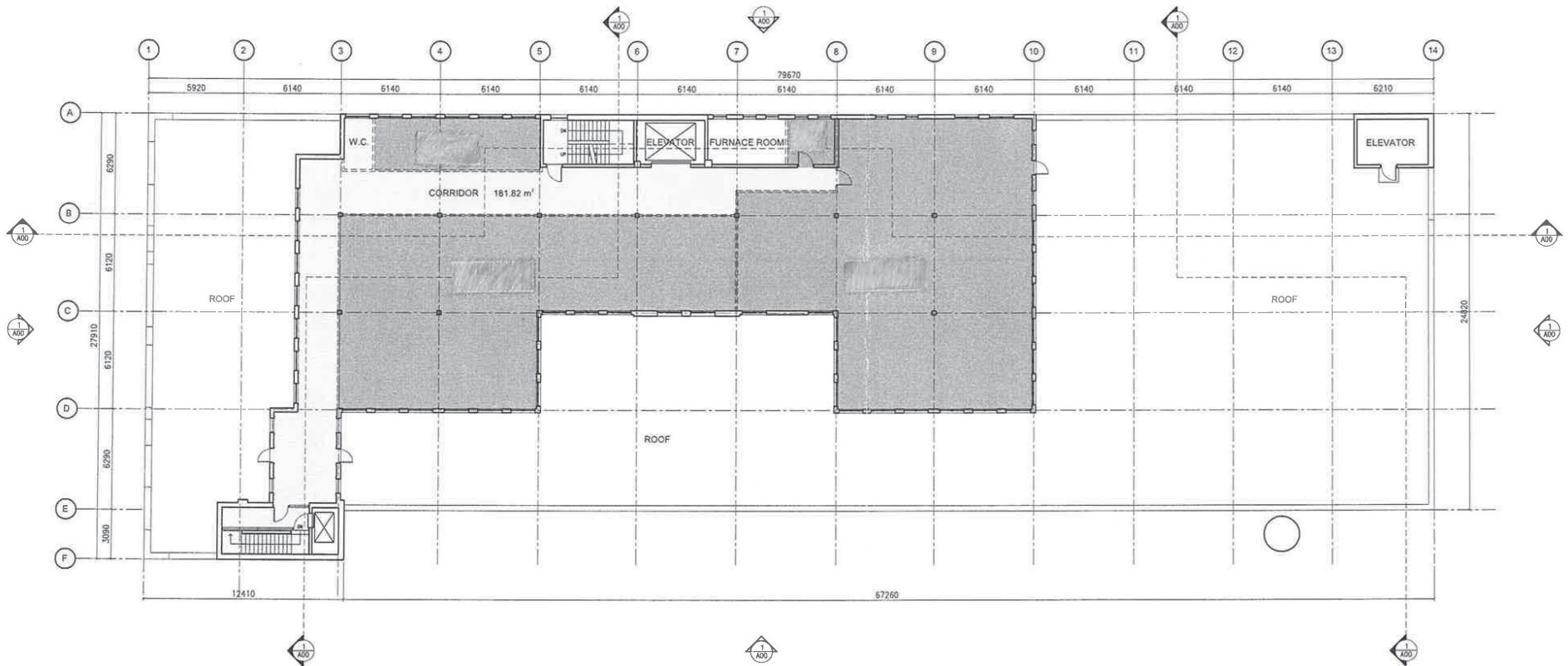
**MEMNON**

**AVISON  
YOUNG**

# Suite 600 | 8,573 sf

## Floor plan

**The Wrigley Building**  
235 Carlaw Avenue, Toronto, ON M4M 2S1



**Get more  
information**

**Richard McWhirter**  
Principal, Sales Representative  
416 673 4032  
[Richard.McWhirter@avisonyoung.com](mailto:Richard.McWhirter@avisonyoung.com)

**Daniel Tsiampas**  
Associate, Sales Representative  
647 967 7820  
[Daniel.Tsiampas@avisonyoung.com](mailto:Daniel.Tsiampas@avisonyoung.com)

**MEMNON**

**AVISON  
YOUNG**



# Suite 410 | 7,200 sf

**The Wrigley Building**  
235 Carlaw Avenue, Toronto, ON M4M 2S1

- Massive natural light – 11' x 17' operable windows
- 14 foot ceilings, mushroom columns
- Freight elevator access into space
- Built out with 3 offices, 2 meeting rooms, kitchenette, and remainder open concept
- Parking can be made available (\$210/month)



**Get more  
information**

**Richard McWhirter**  
Principal, Sales Representative  
416 673 4032  
[Richard.McWhirter@avisonyoung.com](mailto:Richard.McWhirter@avisonyoung.com)

**Daniel Tsiampas**  
Associate, Sales Representative  
647 967 7820  
[Daniel.Tsiampas@avisonyoung.com](mailto:Daniel.Tsiampas@avisonyoung.com)

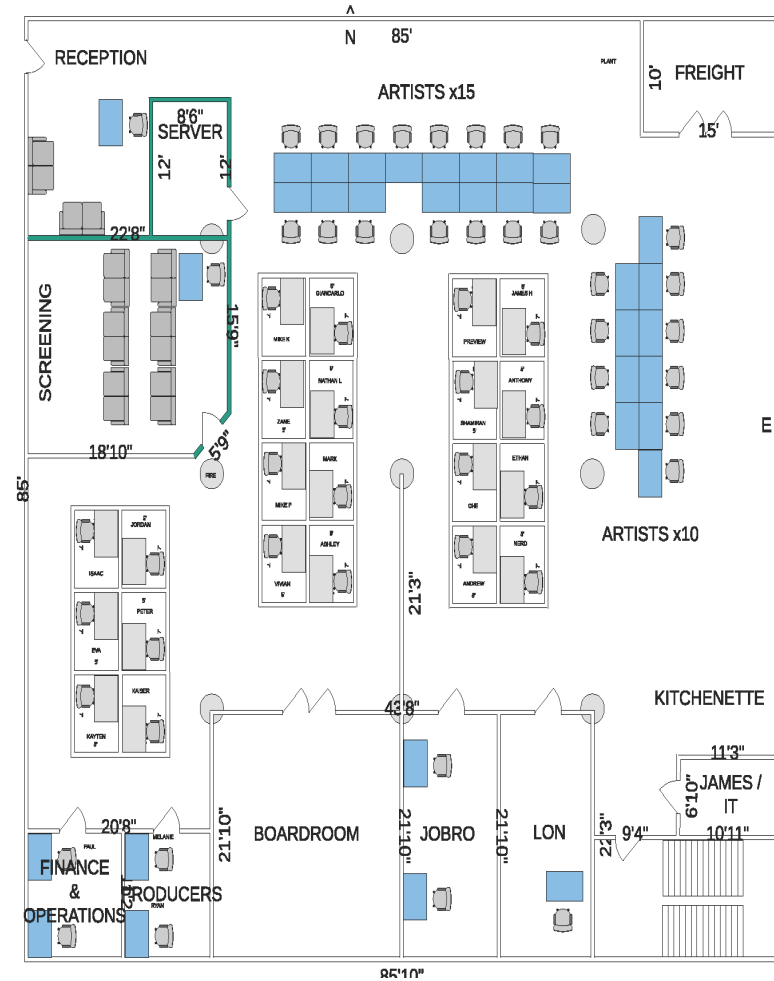
**MEMNON**

**AVISON  
YOUNG**

# Suite 410 | 7,200 sf

## Floor plan

**The Wrigley Building**  
235 Carlaw Avenue, Toronto, ON M4M 2S1



**Get more  
information**

**Richard McWhirter**  
Principal, Sales Representative  
416 673 4032  
Richard.McWhirter@avisonyoung.com

**Daniel Tsiampas**  
Associate, Sales Representative  
647 967 7820  
Daniel.Tsiampas@avisonyoung.com

**MEMNON**

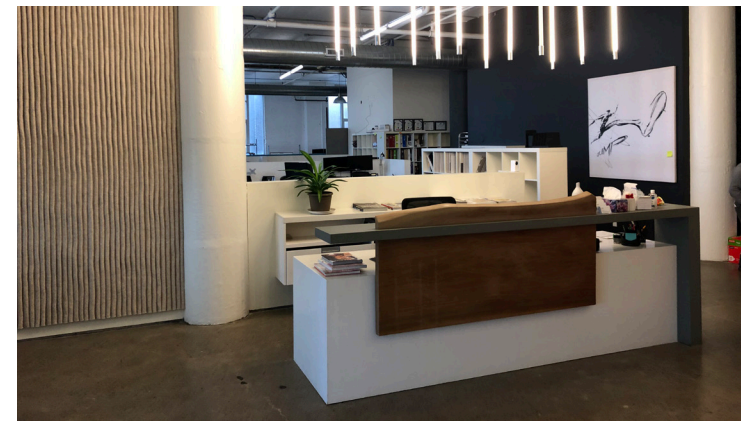
**AVISON  
YOUNG**



## Suite 403 | 5,100 sf

**The Wrigley Building**  
235 Carlaw Avenue, Toronto, ON M4M 2S1

- Massive natural light – 11' x 17' operable windows
- 14 foot ceilings, mushroom columns
- Built out with 3 offices, 2 meeting rooms, kitchenette, and remainder open concept
- Parking can be made available (\$210/month)



**Get more  
information**

**Richard McWhirter**

Principal, Sales Representative

416 673 4032

[Richard.McWhirter@avisonyoung.com](mailto:Richard.McWhirter@avisonyoung.com)

**Daniel Tsiampas**

Associate, Sales Representative

647 967 7820

[Daniel.Tsiampas@avisonyoung.com](mailto:Daniel.Tsiampas@avisonyoung.com)

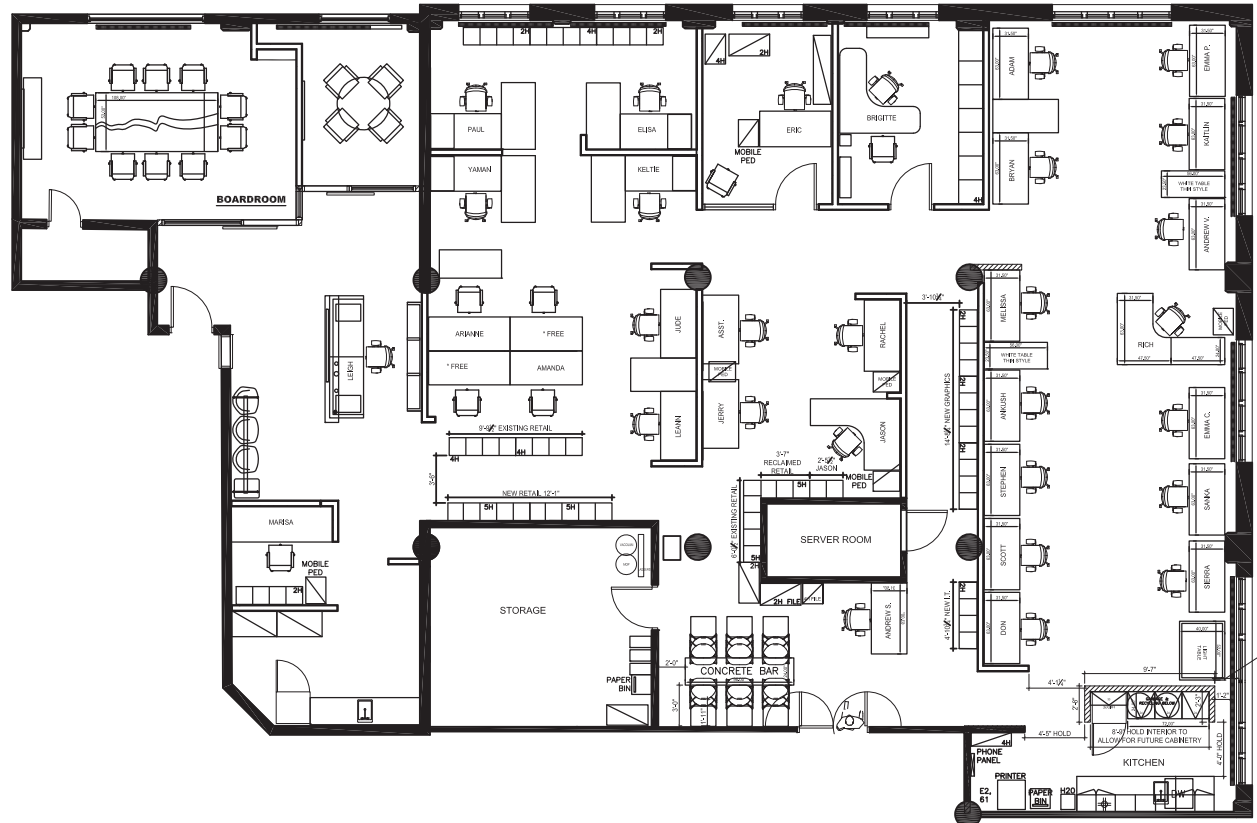
**MEMNON**

**AVISON  
YOUNG**

# Suite 403 | 5,100 sf

## Floor plan

**The Wrigley Building**  
235 Carlaw Avenue, Toronto, ON M4M 2S1



**Get more  
information**

**Richard McWhirter**  
Principal, Sales Representative  
416 673 4032  
Richard.McWhirter@avisonyoung.com

**Daniel Tsiampas**  
Associate, Sales Representative  
647 967 7820  
Daniel.Tsiampas@avisonyoung.com

**MEMNON**

**AVISON  
YOUNG**