



320
GRANVILLE

SHARE SALE

320 GRANVILLE
STREET

3RD FLOOR OFFICE OPPORTUNITY

320 GRANVILLE

This is the most central and connected location in Vancouver. At Granville and Cordova, right in front of Waterfront Station, the entry plaza and grand lobby create a sense of arrival appropriate to the spot where Gastown, Coal Harbour and the waterfront converge. This address is taking its place as the premier commercial destination in the city.



 320
GRANVILLE



THE DETAILS

FLOOR

3

SUITES

SL4 - 1,160.35 s.f.

SL5 - 1,587.68 s.f.

TOTAL SIZE

2,748.03 s.f.

PARKING

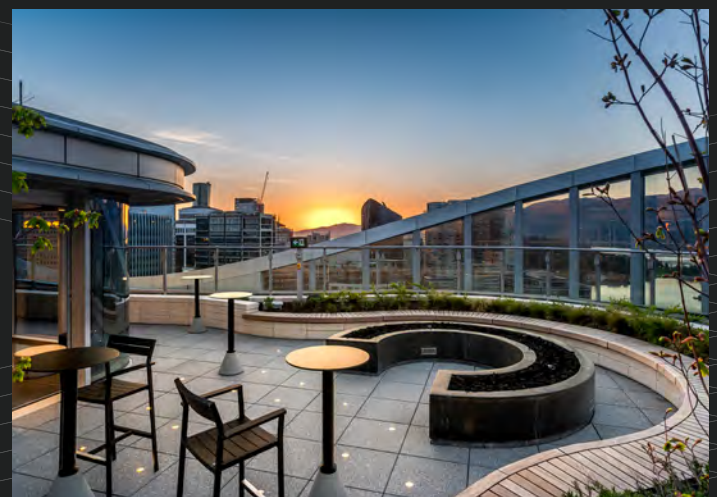
1 stall per 1,400 s.f.

DELIVERY

Immediately for fixturing

PRICE GUIDANCE

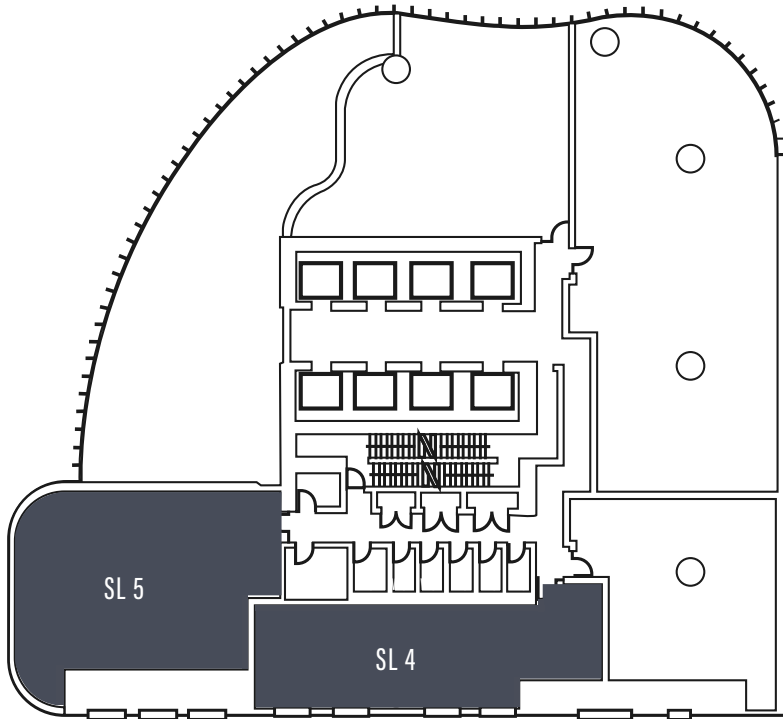
Contact listing agent



FLOOR PLAN

WEST CORDOVA STREET

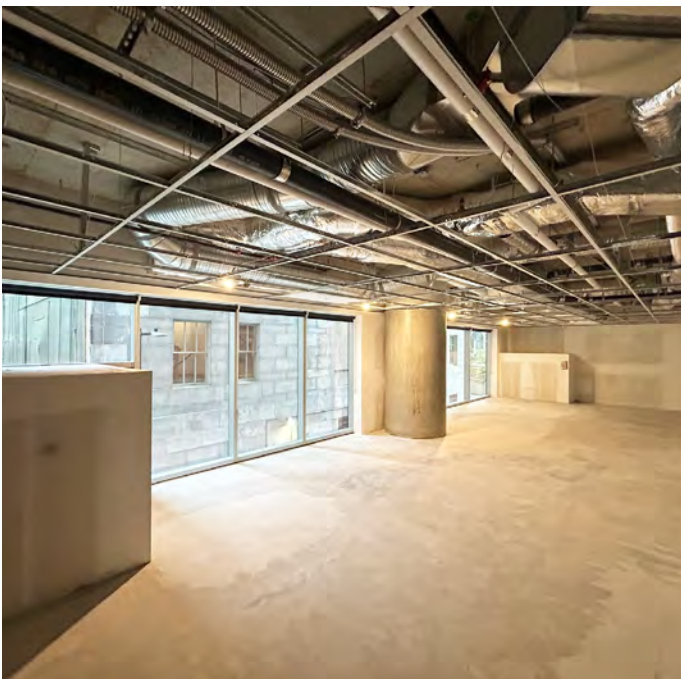
GRANVILLE STREET



SHELL CONDITION SPECS

- Immediately for fixturing
- Perforated roller blinds on all exterior glazing
- Exposed concrete floor
- Open ceiling
- Paint ready drywall for demising walls
In accordance with the building code Requirements
- LEED™ compliant high efficiency led lighting
- Electrical panel, minimum 100amp 3 phase
- Rough-in for plumbing
- Curtain wall glazing
- Stub-in fire protection sprinkler
- Heating and cooling ventilation system in
accordance with building code requirements
- For shell space (with all connection and distribution related matters to be handled, supplied and installed by purchaser)
- Cold water supply
- Conduit for cable and telephone

2,748.03 total available sqare footage but can be sold as individual units





FOR MORE INFORMATION, PLEASE CONTACT:

ANDREW ASTLES
Associate Vice President
+1 604 363 6673
andrew.astles@jll.com

JLL VANCOUVER
510 West Georgia Street
Suite 2150, 21st Floor
Vancouver V6B 0M3
+1 604 998 6001



Although information has been obtained from sources deemed reliable, neither Owner nor JLL makes any guarantees, warranties or representations, express or implied, as to the completeness or accuracy as to the information contained herein. Any projections, opinions, assumptions or estimates used are for example only. There may be differences between projected and actual results, and those differences may be material. The Property may be withdrawn without notice. Neither Owner nor JLL accepts any liability for any loss or damage suffered by any party resulting from reliance on this information. If the recipient of this information has signed a confidentiality agreement regarding this matter, this information is subject to the terms of that agreement.