



FOR SUBLEASE

4400

Dominion Street

 FLOORSPACE



THE OPPORTUNITY

4400 Dominion Street

Unit	280
Area	10,647 SF (demising options starting at ~3,665 SF)
Availability	Immediately
Sublease Expiry	March 30, 2029
Basic Rent	Contact listing agents
Additional Rent	\$23.01 PSFPA (2025 estimate)
Furniture	Potentially available

THE SPACE

North-facing office with mountain views and a mix of open area, glass offices, boardroom, closet/storage room, kitchen and small kitchenette. The unit features an abundance of natural light and a private balconies. Furniture can be made available.



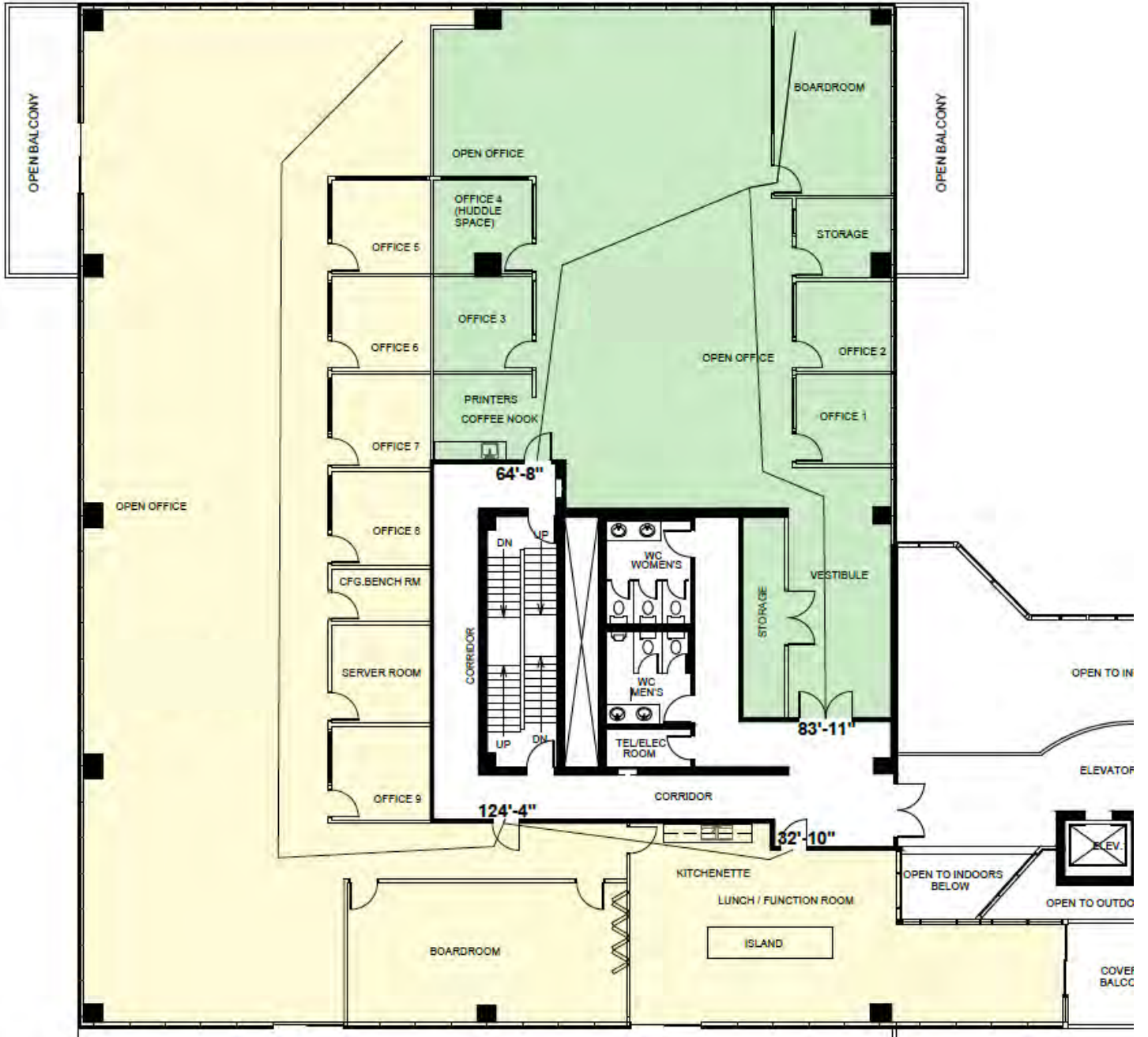
FLOOR PLAN

UNIT 280

FULL FLOOR | 10,647 SF

DEMISING OPTION A | 6,982 SF (approx.)

DEMISING OPTION B | 3,665 SF (approx.)



Centrally located office building in Burnaby

- Abundance of secure parking
- Easy access to Gilmore and Brentwood Town Centre SkyTrain Stations
- Close proximity to the Trans-Canada Highway





For more information, please contact:

Robin Macdonald

SENIOR ASSOCIATE

+1 604 617 1445

robin@floorspace.ca

Harris Sheldon

ASSOCIATE

+1 672 336 8894

harris@floorspace.ca

FLOORSPACE

1166 Alberni St., Suite 250

Vancouver, BC Canada

V6E 3Z3

www.floorspace.ca

THIS DOCUMENT HAS BEEN PREPARED BY FLOORSPACE COMMERCIAL INC. FOR ADVERTISING AND GENERAL INFORMATION ONLY. ALL INFORMATION CONTAINED HEREIN IS FROM SOURCES WE DEEM RELIABLE, AND WE HAVE NO REASON TO DOUBT ITS ACCURACY; HOWEVER, NO GUARANTEE OR RESPONSIBILITY IS ASSUMED THEREOF, AND IT SHALL NOT FORM ANY PART OF FUTURE CONTRACTS. PROPERTY INFORMATION IS SUBMITTED SUBJECT TO ERRORS AND OMISSIONS AND ALL INFORMATION SHOULD BE CAREFULLY VERIFIED. ANY INTERESTED PARTY SHOULD UNDERTAKE THEIR OWN INQUIRIES AS TO THE ACCURACY OF THE INFORMATION. ALL MEASUREMENTS QUOTED HEREIN ARE APPROXIMATE. THIS PUBLICATION IS THE COPYRIGHTED PROPERTY OF FLOORSPACE COMMERCIAL INC. AND/OR ITS LICENSOR(S). COPYRIGHT © 2024 FLOORSPACE COMMERCIAL INC.

