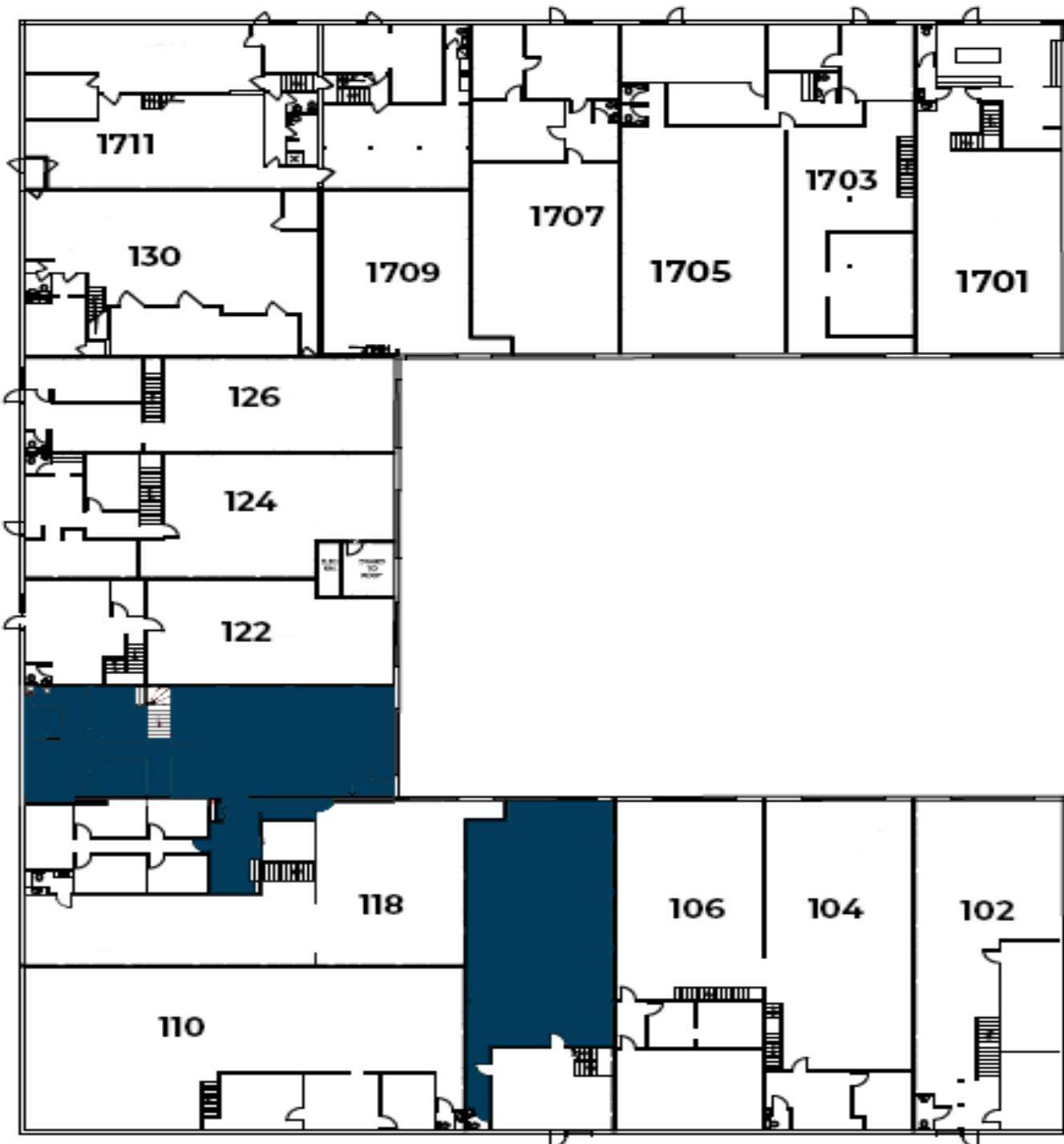


Lions Gate Business Park

102-140 Garden Ave, 1601-1723 Welch Street, 101-139 Bowser Ave, North Vancouver, B.C.



WELCH STREET



FIRST STREET



BOWSER AVE

 AVAILABLE

Unit #	Sq.ft.	Tenant Name
1651 Welch	2,355	CSN Pharma
1641 Welch	2,367	CSN Pharma
1631 Welch	2,335	Suspension Werx
1621 Welch	2,303	Blue Grouse Wine Cellars
1611 Welch	2,394	Samel Discovery
1601 Welch	4,696	1508047 BC Ltd.
125 Bowser	1,674	Street Tint Legal
123 Bowser	2,063	Tidey Lock & Key
121 Bowser	3,772	Available
115 Bowser	2,326	Bodyco Fitness
111 Bowser	2,375	Gravity Construction
109 Bowser	2,335	KC Welding & Design
107 Bowser	2,340	Carlos Ornamental
105 Bowser	2,331	Strength Connected Fitness
103 Bowser	2,367	Penometal Design
101 Bowser	2,350	30-Minute Hit
1701 Welch	2,362	Planet Studio
1703 Welch	4,670	Project X Counter
1707 Welch	2,310	Grab & Go
1709 Welch	2,401	Cypress Railings & Gates
1711 Welch	2,325	RK4 Development
130 Garden	2,332	Masa's Salmon Smoke House
126 Garden	1,609	Worley Canada
124 Garden	2,055	Medna Medical
122 Garden	1,836	Envision Improvements
120 Garden	1,959	Available
118 Garden	3,498	Great Canadian Landscaping
110 Garden	3,528	Capilano Rock + Gem
108 Garden	2,308	Available
106 Garden	2,335	West Coast-Off Roaders
104 Garden	2,335	West Coast-Off Roaders



Peter Jenkins
 peter.jenkins@gwlra.com
 604-713-8920