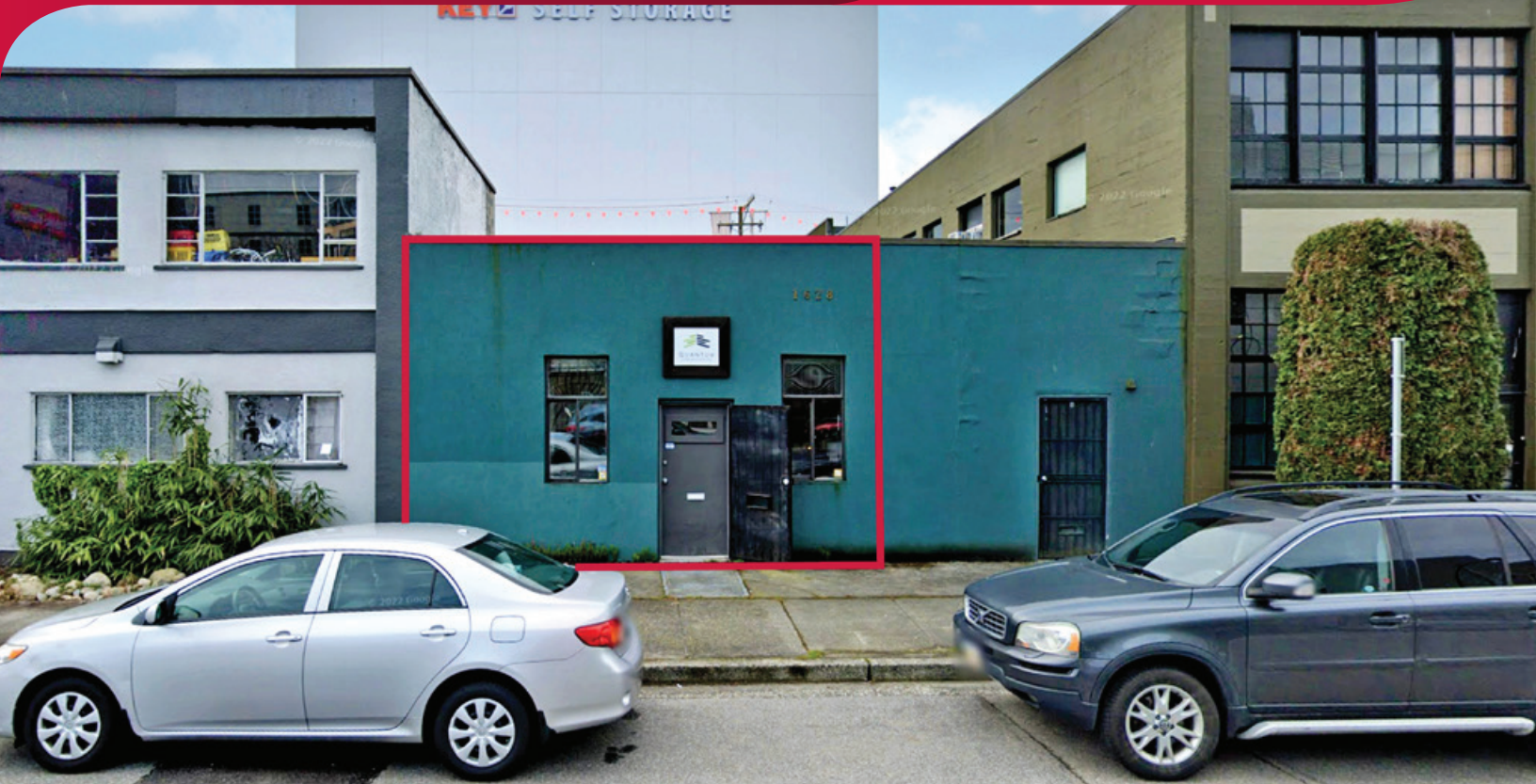


FOR LEASE | INDUSTRIAL
UNIT A - 1628 PANDORA STREET
VANCOUVER, BC

**LEE &
ASSOCIATES**
COMMERCIAL REAL ESTATE SERVICES



- ▶ **East Vancouver Industrial Building**
- ▶ **Office/Warehouse/Production Space**

Ryan Saunders

Personal Real Estate Corporation
D 604.630.3384 C 604.760.8799
ryan.saunders@lee-associates.com

Mitch Ellis

D 604.630.3383 C 604.729.7699
mitch.ellis@lee-associates.com

FOR LEASE | INDUSTRIAL UNIT A - 1628 PANDORA STREET VANCOUVER, BC



Location

The subject property is located on the south side of Pandora Street, close to the corner of Commercial Drive, in Vancouver's desirable Grandview-Woodland industrial area. This location provides excellent access to the downtown business district, Powell Street, and Commercial Drive.

Features

- ▶ Natural light throughout boardroom area
- ▶ Heavy 3-phase power
- ▶ Recent upgrades
- ▶ Signage opportunity
- ▶ Close to transit
- ▶ Yard area
- ▶ Grade level loading
- ▶ 10' ceiling height (approximate)
- ▶ Parking at rear
- ▶ Alarm system in place
- ▶ 1 private washroom
- ▶ Security bars on windows
- ▶ Gas forced air heating
- ▶ Floor drains

Zoning

M-2 industrial district allows for most manufacturing, showroom, storage, wholesaling, distribution, office and some service-based businesses.

Available Area

Office/boardroom	350 SF
Warehouse/production	1,230 SF
Total	1,580 SF

**All measurements are approximate and must be verified by the tenants*

Parking

Shared secured parking at rear

Gross Lease Rate

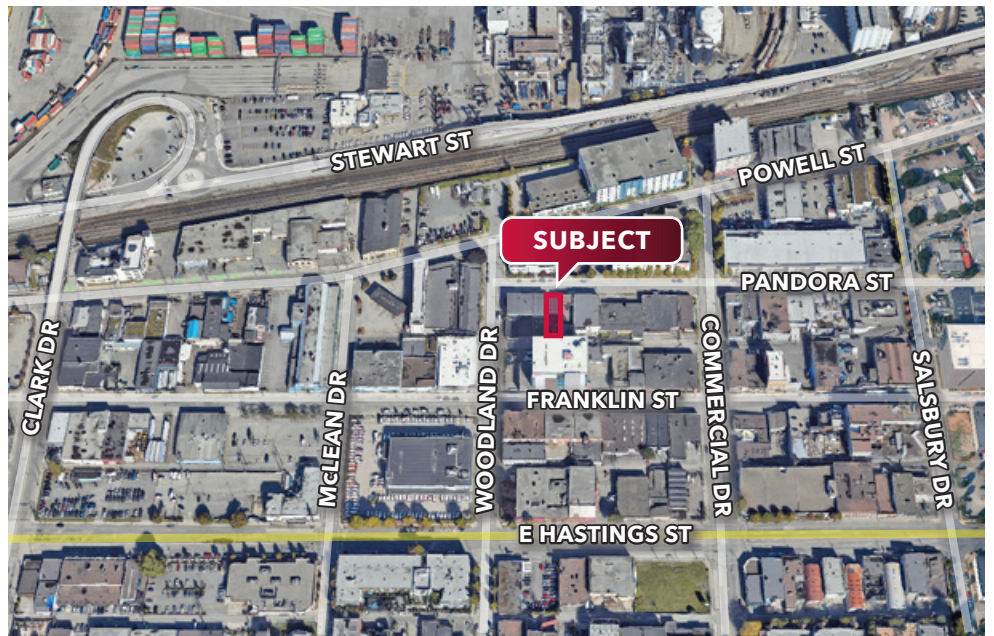
\$5,300.00 per month, plus GST

Lease Term

3 to 5 years

Availability

January 1, 2026



Ryan Saunders

Personal Real Estate Corporation
D 604.630.3384 C 604.760.8799
ryan.saunders@lee-associates.com

Mitch Ellis

D 604.630.3383 C 604.729.7699
mitch.ellis@lee-associates.com