

FOR LEASE | INDUSTRIAL  
**23699-23737 FRASER HIGHWAY**  
LANGLEY, BC



- ▶ **30,492 SF to 1.70 Acres of M1-B Zoned Industrial Land**
- ▶ **Conveniently Located Off Fraser Highway**

**Location**

Located in rural East Langley, this site offers a service industrial-designated property. The property is conveniently located in close proximity to several major transportation routes, including Highway 1 via the 232nd Street interchange and Fraser Highway. Proximity to Lynden Border Crossing.

**Highlights**

- ▶ Outside storage permitted
- ▶ Vehicle parking permitted
- ▶ Gravelled and levelled
- ▶ Fenced and gated

**Sebastian Espinosa** CCIM, SIOR  
Personal Real Estate Corporation  
Senior Vice President | Principal  
D 604.630.3396 C 604.783.8139  
sebastian.espinosa@lee-associates.com

**Steve Caldwell**  
Personal Real Estate Corporation  
Partner & Executive Vice President  
D 604.895.2224 C 604.809.3122  
steve.caldwell@lee-associates.com

## Available Areas

Available Space	Basic Rent	Additional Rent*	Total Monthly + GST*	Availability
30,492 SF	\$3.25 PSF per annum	\$0.95 PSF per annum	\$11,307.45	Immediately
1 Acre	\$3.25 PSF per annum	\$0.95 PSF per annum	\$16,153.50	Immediately

\*All leases will be triple net with tenant responsible for all utility costs and business related costs.

Lease rates are quoted net of GST.

## Zoning

M-1B (Service Industrial Zone) allows for a variety of uses. Outside storage permitted ([click to view bylaw](#)).

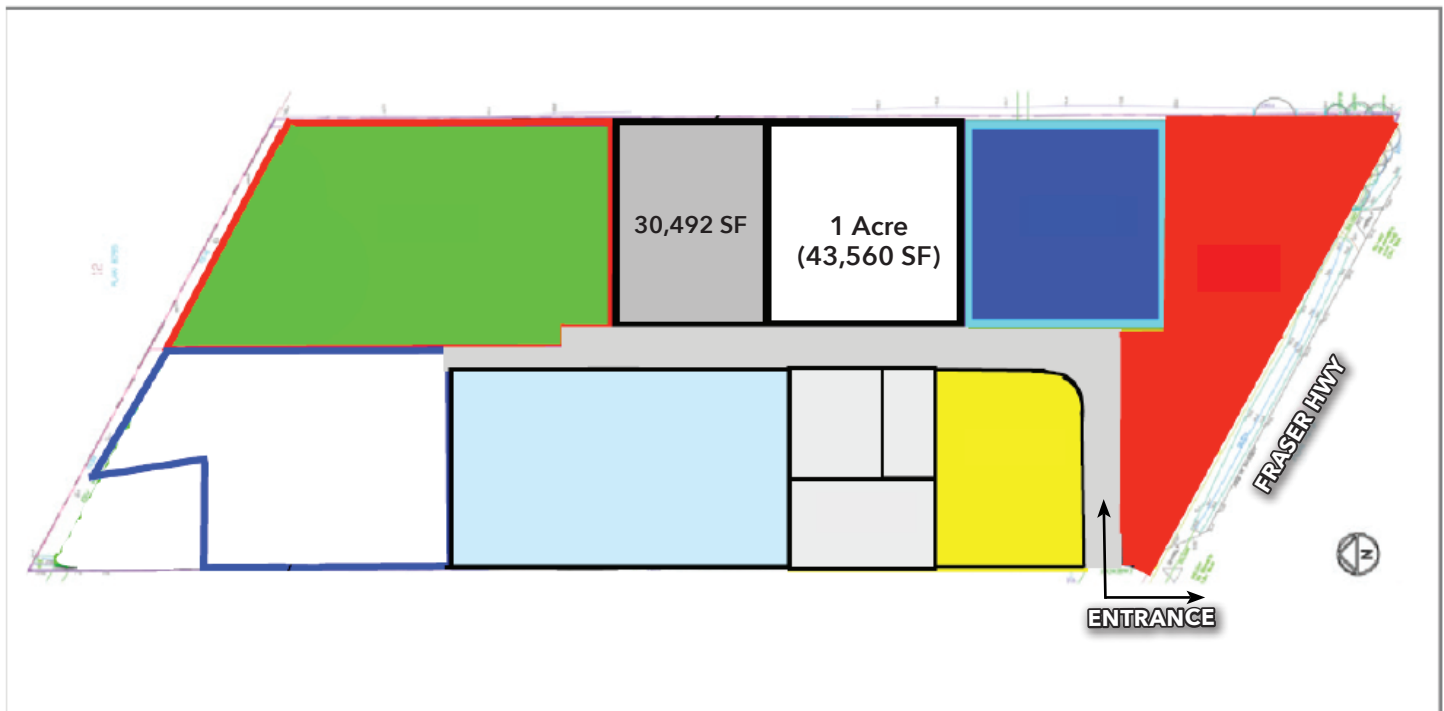
## Features

Site is individually fenced and gated in addition to fence/gate around whole yard.

## Site Plan

SCHEDULE A  
SITE PLAN

23699/23737 Fraser Hwy



**Sebastian Espinosa** CCIM, SIOR  
 Personal Real Estate Corporation  
 Senior Vice President | Principal  
 D 604.630.3396 C 604.783.8139  
 sebastian.espinosa@lee-associates.com

**Steve Caldwell**  
 Personal Real Estate Corporation  
 Partner & Executive Vice President  
 D 604.895.2224 C 604.809.3122  
 steve.caldwell@lee-associates.com

Disclaimer: Although the information contained within is from sources believed to be reliable, no warranty or representation is made as to its accuracy being subject to errors, omissions, conditions, prior lease, withdrawal or other changes without notice and same should not be relied upon without independent verification. 0811 © 2025 Lee & Associates Commercial Real Estate (BC) Ltd. All Rights Reserved.