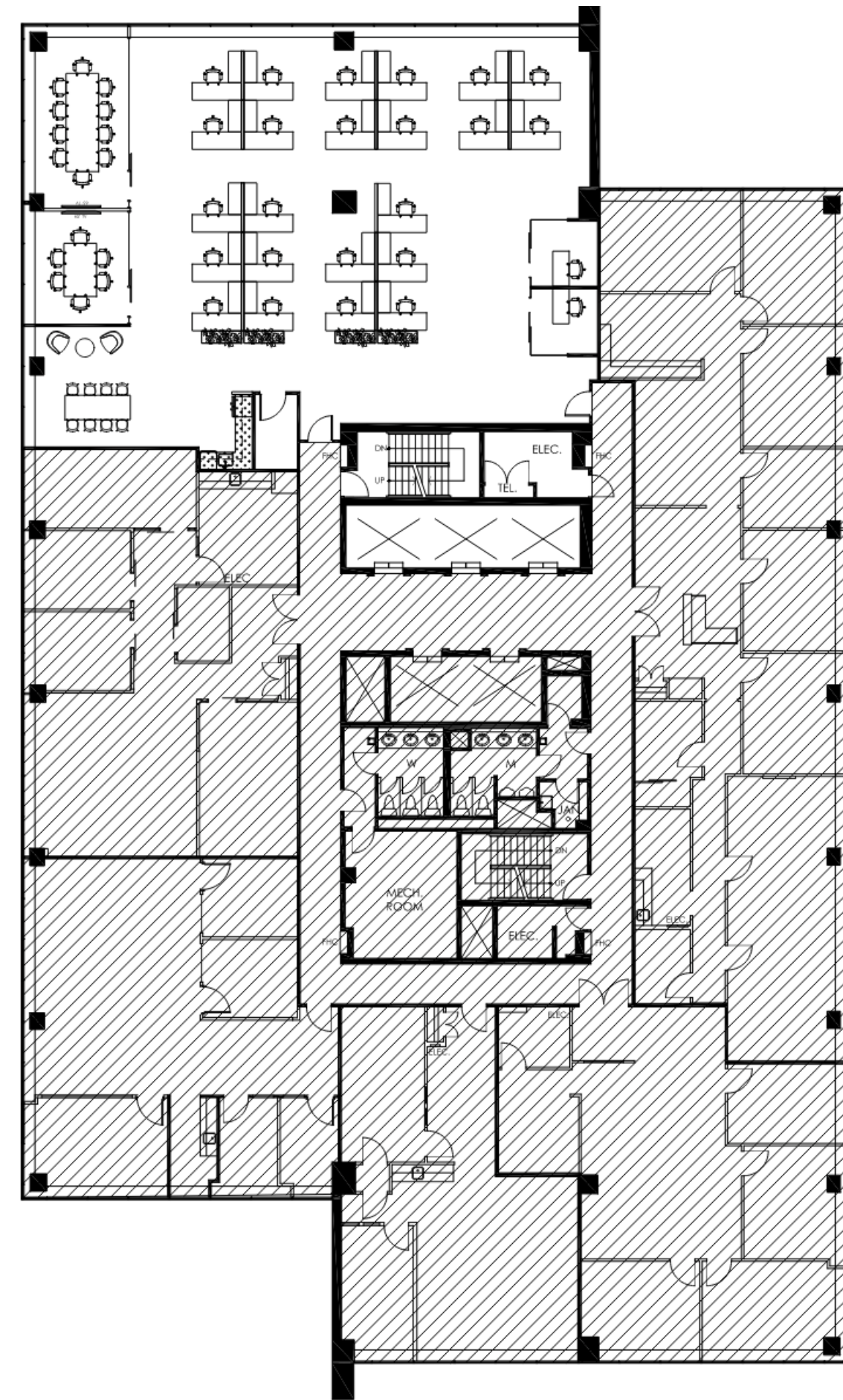
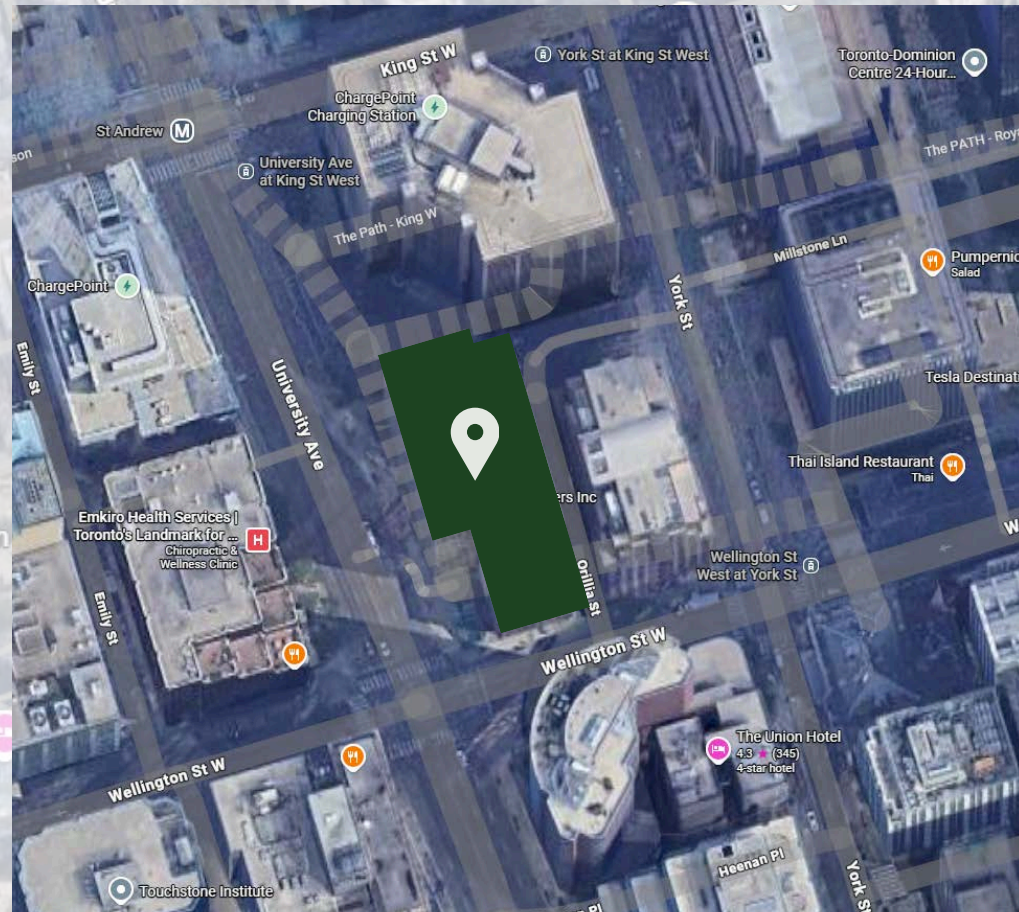


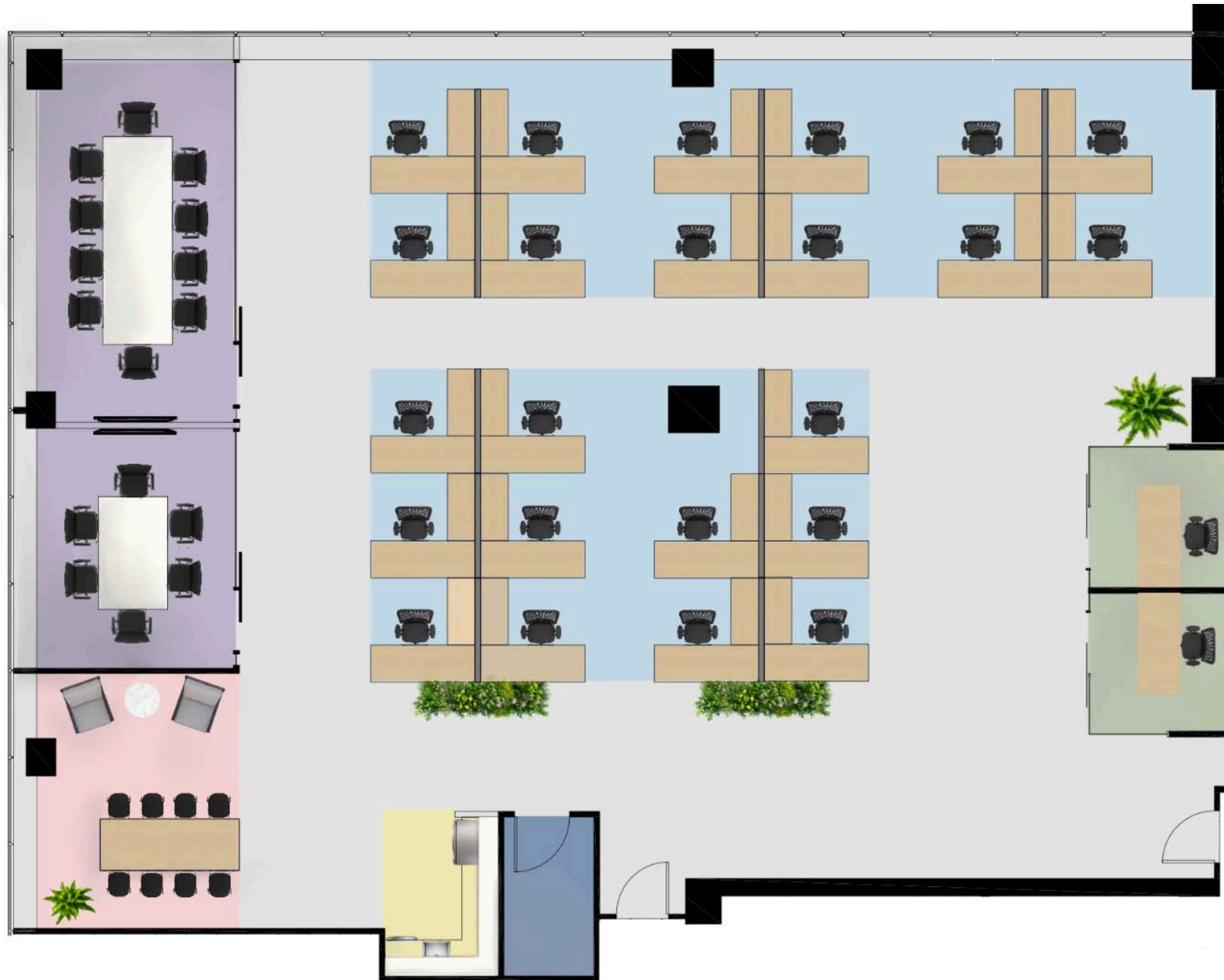
55 UNIVERSITY AVE, TORONTO, ON, SUITE 715







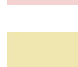

55 University Ave
Suite 715
KEY PLAN



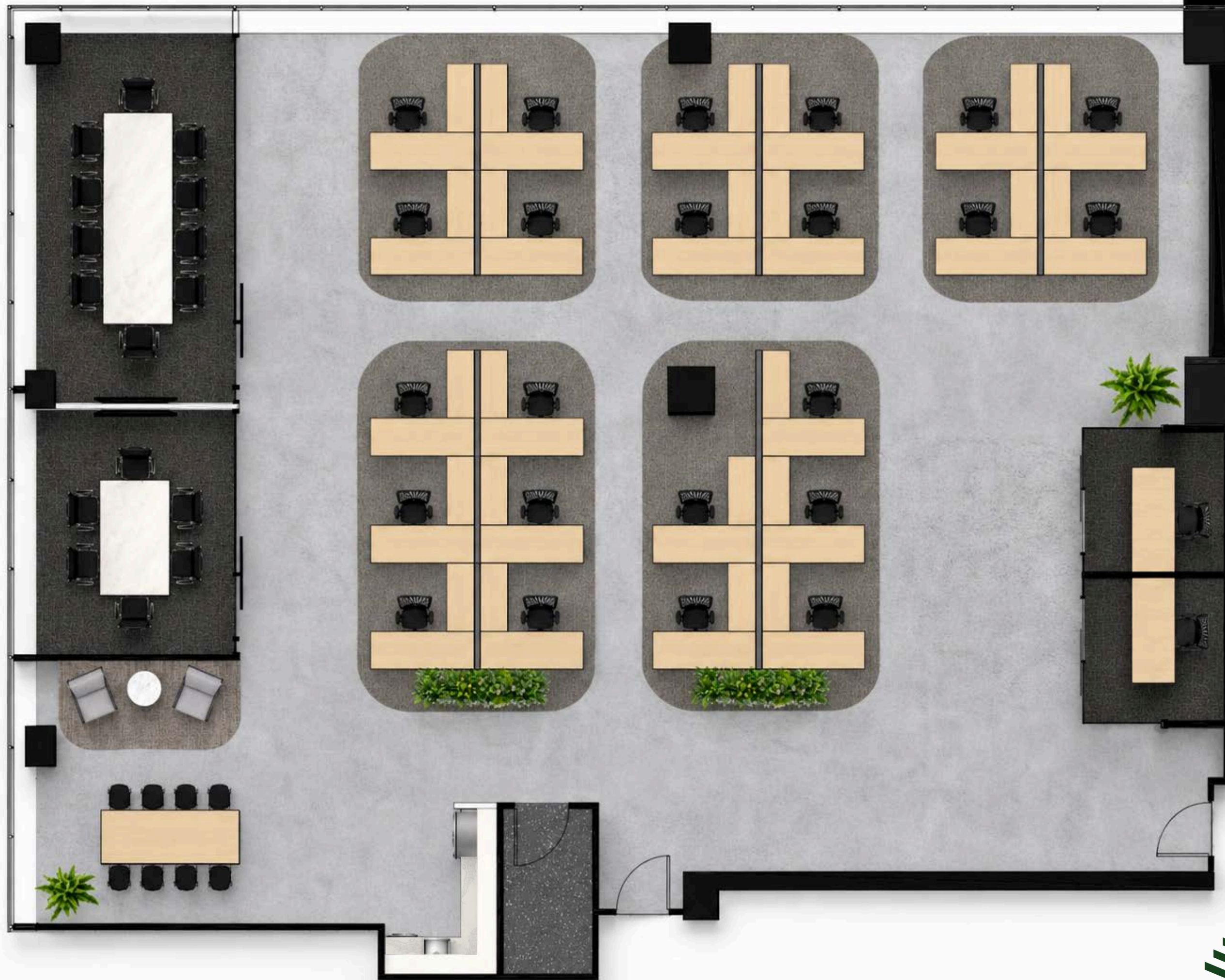
55 University Ave
Suite 715
ZONING PLAN



LEGEND:

-  OPEN WORKSTATIONS
-  BOARDROOM/MEETING ROOMS
-  PRIVATE OFFICES
-  CAFE/LOUNGE
-  KITCHENETTE
-  SERVER ROOM

55 University Ave
Suite 715
PLAN RENDERING



55 University Ave

Suite 715

MATERIAL BOARD



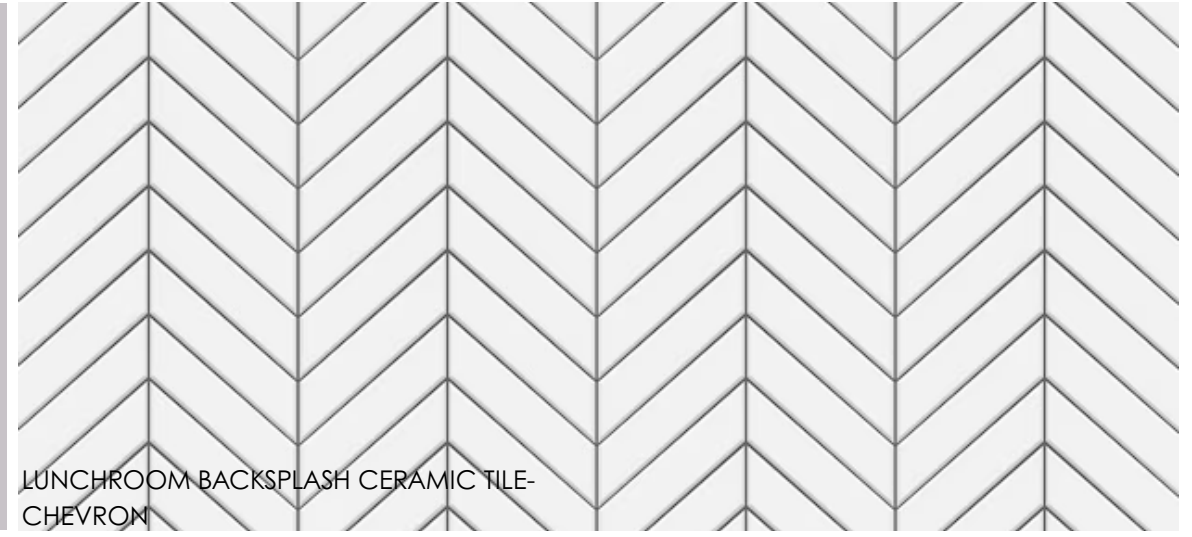
CARPET TILE - WORKSTATIONS



POLISHED CONCRETE FLOORING - OPEN AREAS



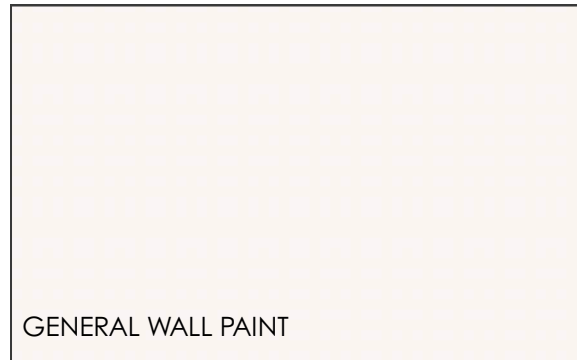
MEETING ROOM DOWNLIGHTS



LUNCHROOM BACKSPLASH CERAMIC TILE - CHEVRON



ACCENT CARPET TILE - OFFICES & MEETING ROOMS



GENERAL WALL PAINT



MEETING ROOM LINEAR PENDANT



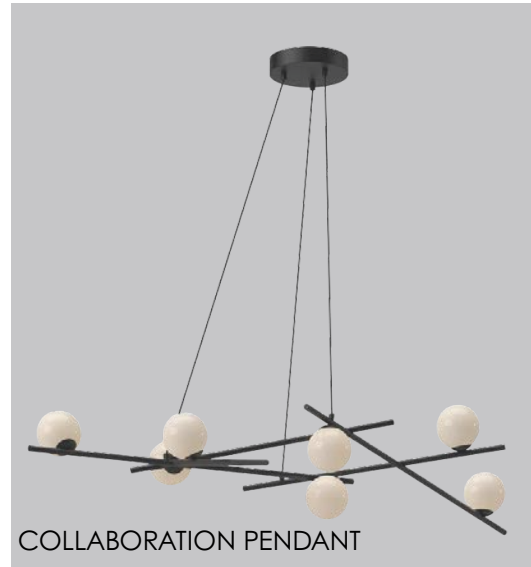
LUNCHROOM LAMINATE - LOWER CABINETS



LUNCHROOM LAMINATE - UPPER CABINETS



ACCENT WALLPAPER



COLLABORATION PENDANT

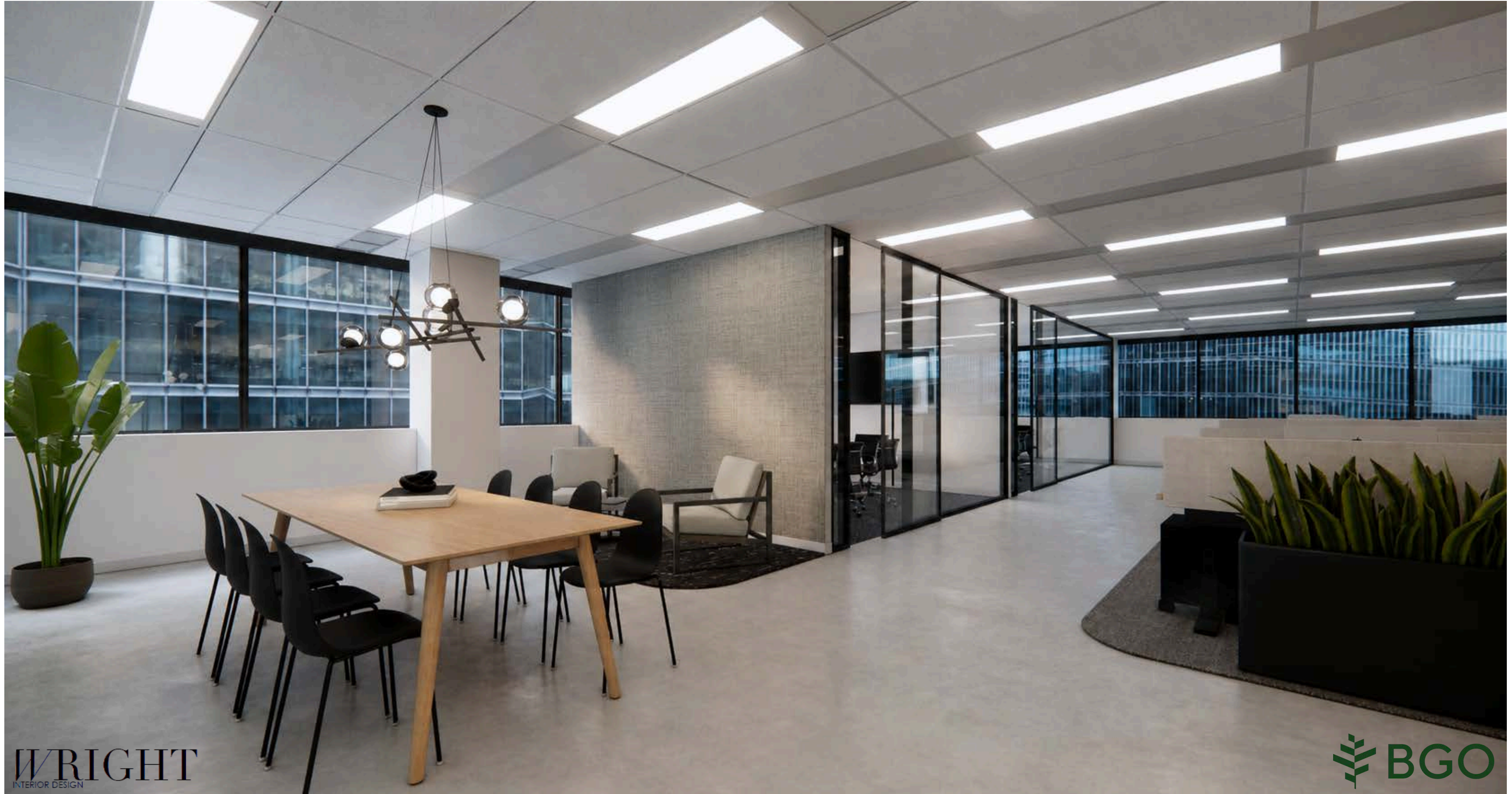


LUNCHROOM QUARZ COUNTERTOP

55 University Ave

Suite 715

CAFE LOUNGE RENDERING



55 University Ave

Suite 715

KITCHENETTE RENDERING



55 University Ave

Suite 715

WORKSTATIONS RENDERING



55 University Ave

Suite 715

BOARDROOM RENDERING

