

17723 96 Avenue Surrey  
(Anniedale-Tynehead)

**FOR SALE**



**+/- 2 Acres Light Industrial**



**Price: \$9,499,990.00**



Global Force Realty  
INDEPENDENTLY OWNED AND OPERATED

**Ishwinder Ghag**  
Personal Real Estate Corporation  
Cell: 604-537-4334

Royal LePage Global Fore Realty  
104-13049 76 Ave Surrey, BC, V3W 2V7  
E-mail: [ishwinderghag@gmail.com](mailto:ishwinderghag@gmail.com)

This communication is not intended to cause or induce breach of an existing agency agreement. The information contained herein was obtained from sources which we deem reliable and, while thought to be correct, is not guaranteed by Royal LePage Global Force Realty.

**+/- 2 Acres Light Industrial**

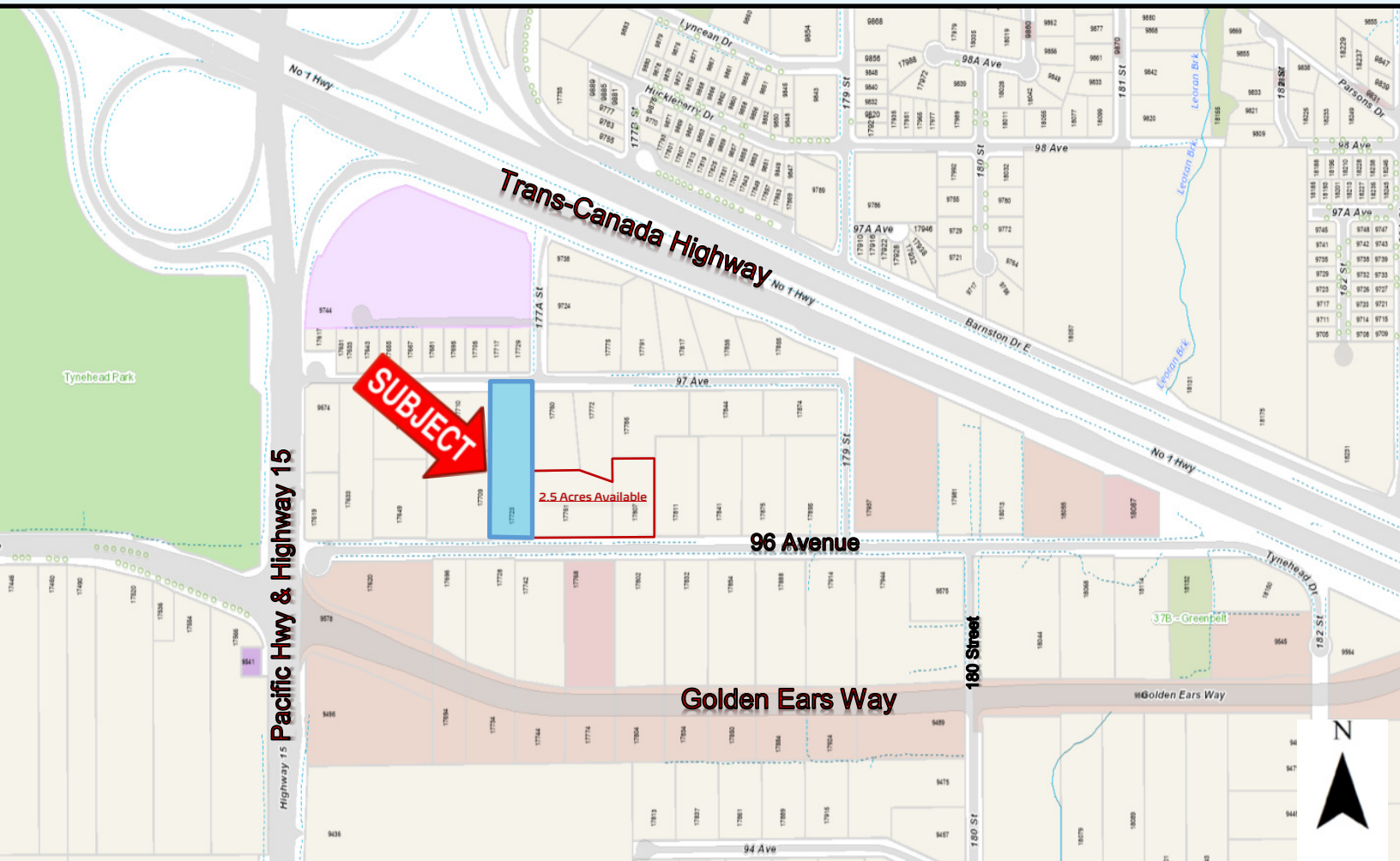
**DESCRIPTION:**

<b><u>ADDRESS:</u></b>	<b><u>LAND SIZE:</u></b>	<b><u>PROPERTY TYPE:</u></b>	<b><u>NCP:</u></b>
17723 96 Avenue Surrey	+/-2 Acres	Industrial Land	Anniedale-Tynehead

+/-2 Acres of land designated for Light Industrial in Anniedale-Tynehead NCP

2.5 acres on the east side also for sale to make the **total land assembly +/-4.5 acres.**

Clear land no creek no trees on these properties. There are few Temporary Use Permits (T.U.P.) in the neighborhood for material storage and truck parking. Easy access to 4 major Highways



**Land Use**

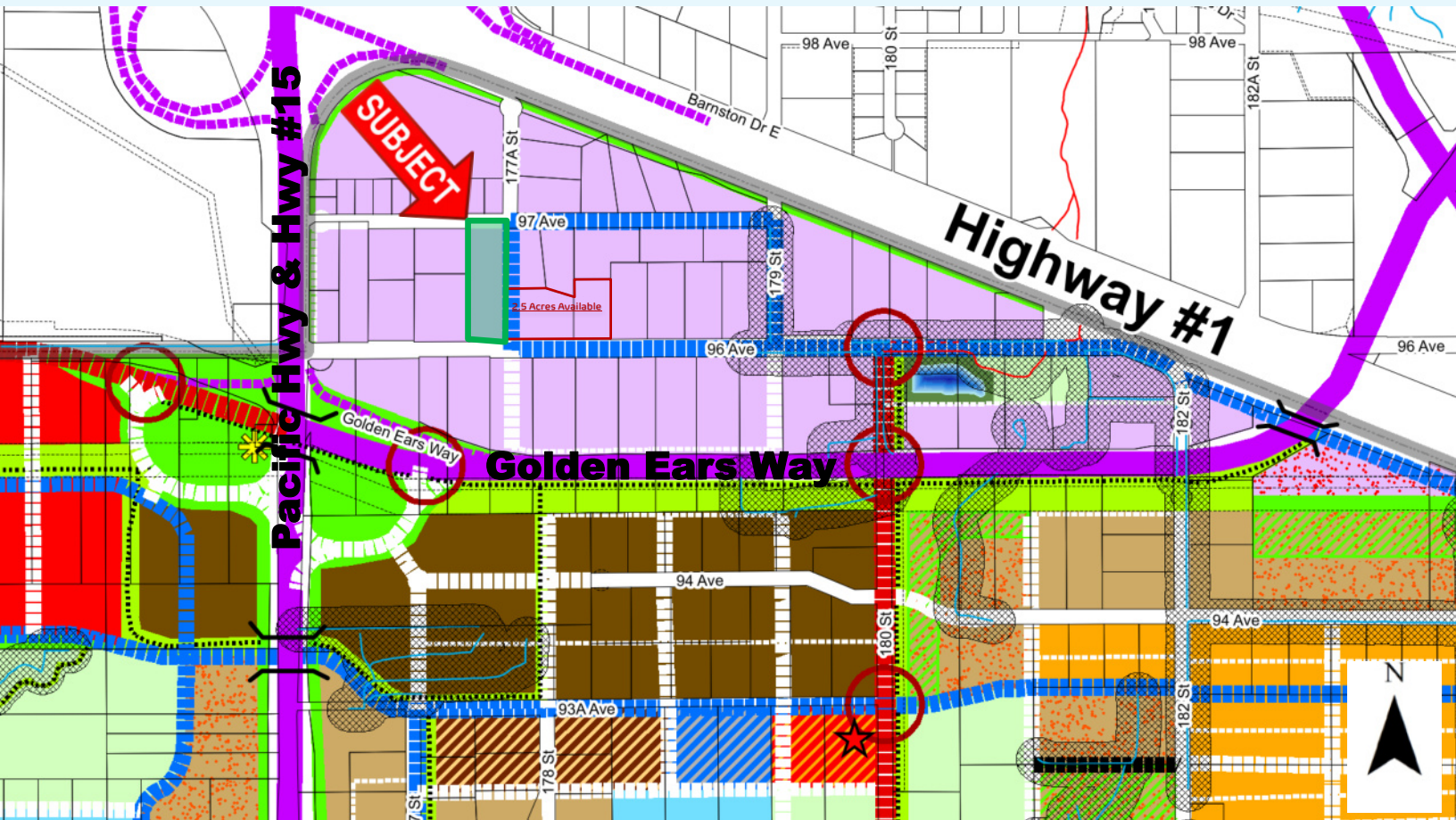
- Commercial
- Neighbourhood Commercial
- Light Industrial
- Industrial Business Park
- Public Assembly
- Community Centre
- School
- Park
- Trail
- Landscape Buffer
- Riparian Area
- Riparian Enhancement Area
- Green Space Transfer

# Anniedale-Tynehead

## Neighbourhood Concept Plan (NCP)

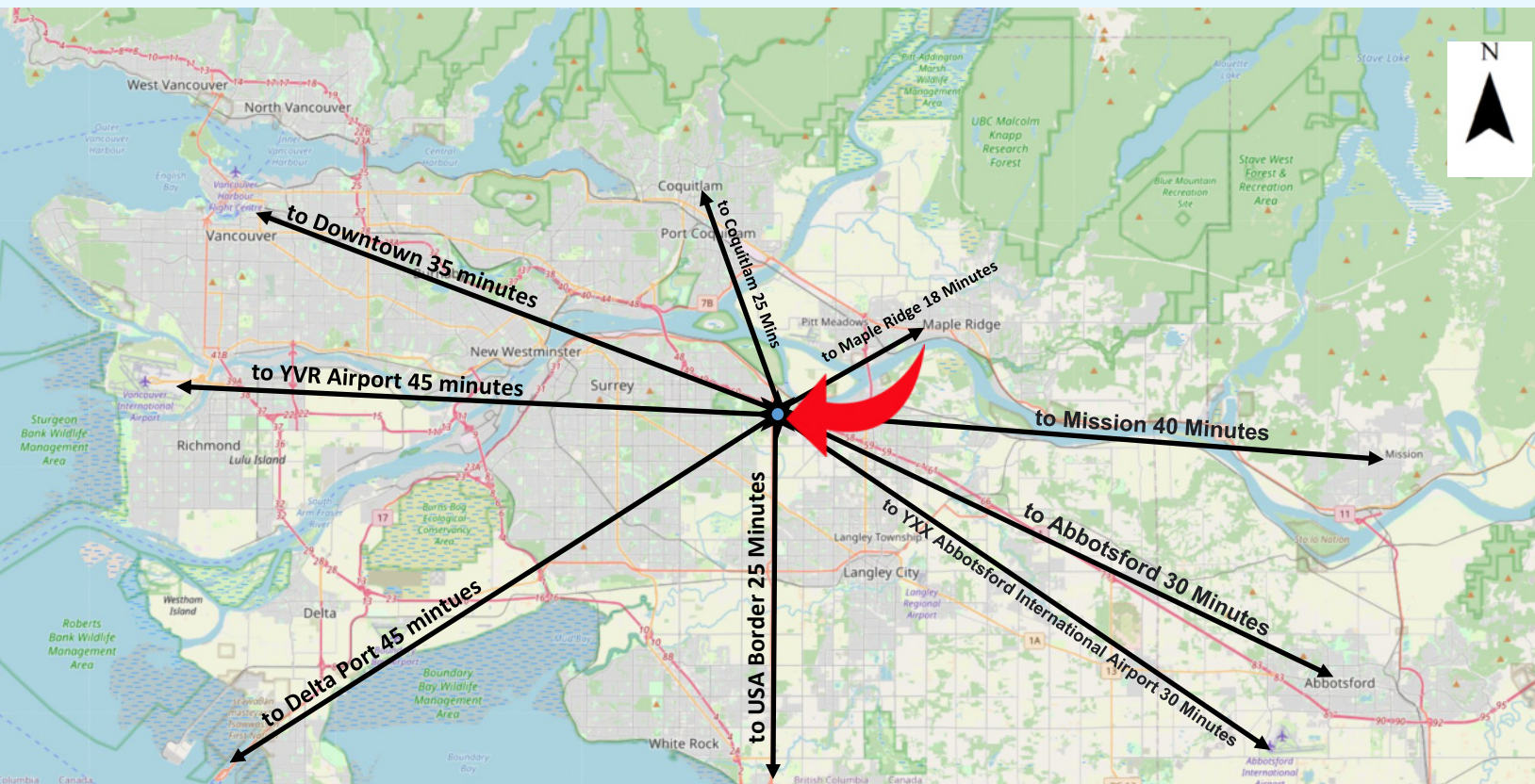
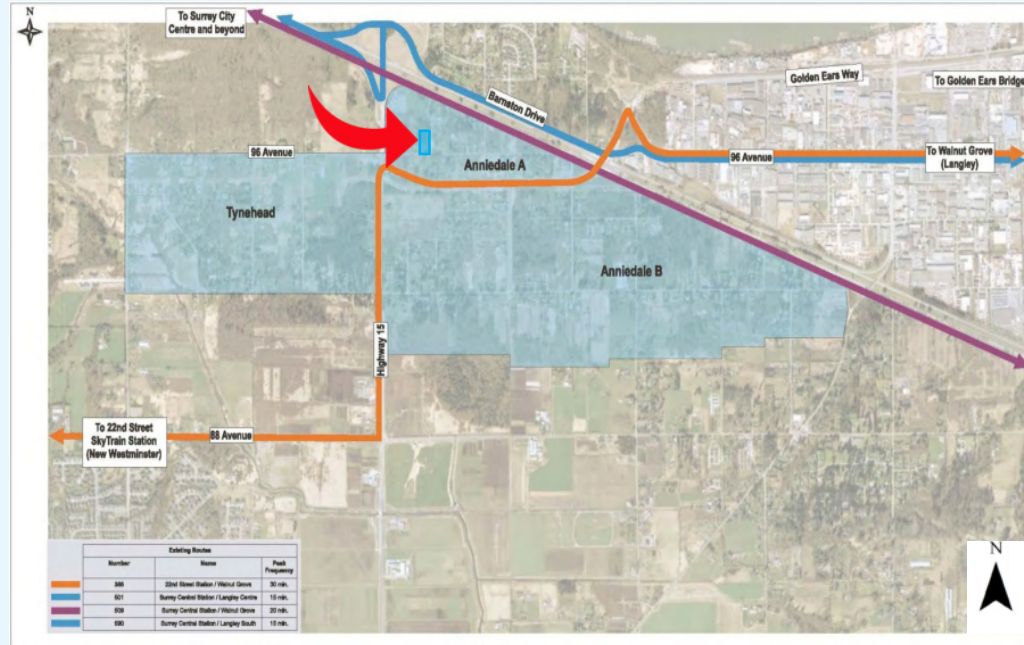
**Industrial Designations**

<span style="display: inline-block; width: 15px; height: 10px; background-color: lightpurple; border: 1px solid black;"></span>	<b>Light Industrial</b>	0.5 to 0.75 FSR	2 Stories (12 m)
<span style="display: inline-block; width: 15px; height: 10px; background: repeating-linear-gradient(-45deg, transparent, transparent 2px, purple 2px, purple 4px); border: 1px solid black;"></span>	<b>Industrial Business Park</b>	0.5 to 1.0 FSR	4 Stories (15 m)



**Location is in the centre of Lower mainland:**

- Less than 45 mins to all the major destination in the lower mainland
- 4 major highways within minutes from the property
- Away from the city traffic
- Easy access to Portman Bridge
- Minutes away from the future Skytrain On Fraser Hwy.
- Bus stop is only 1 block away
- 

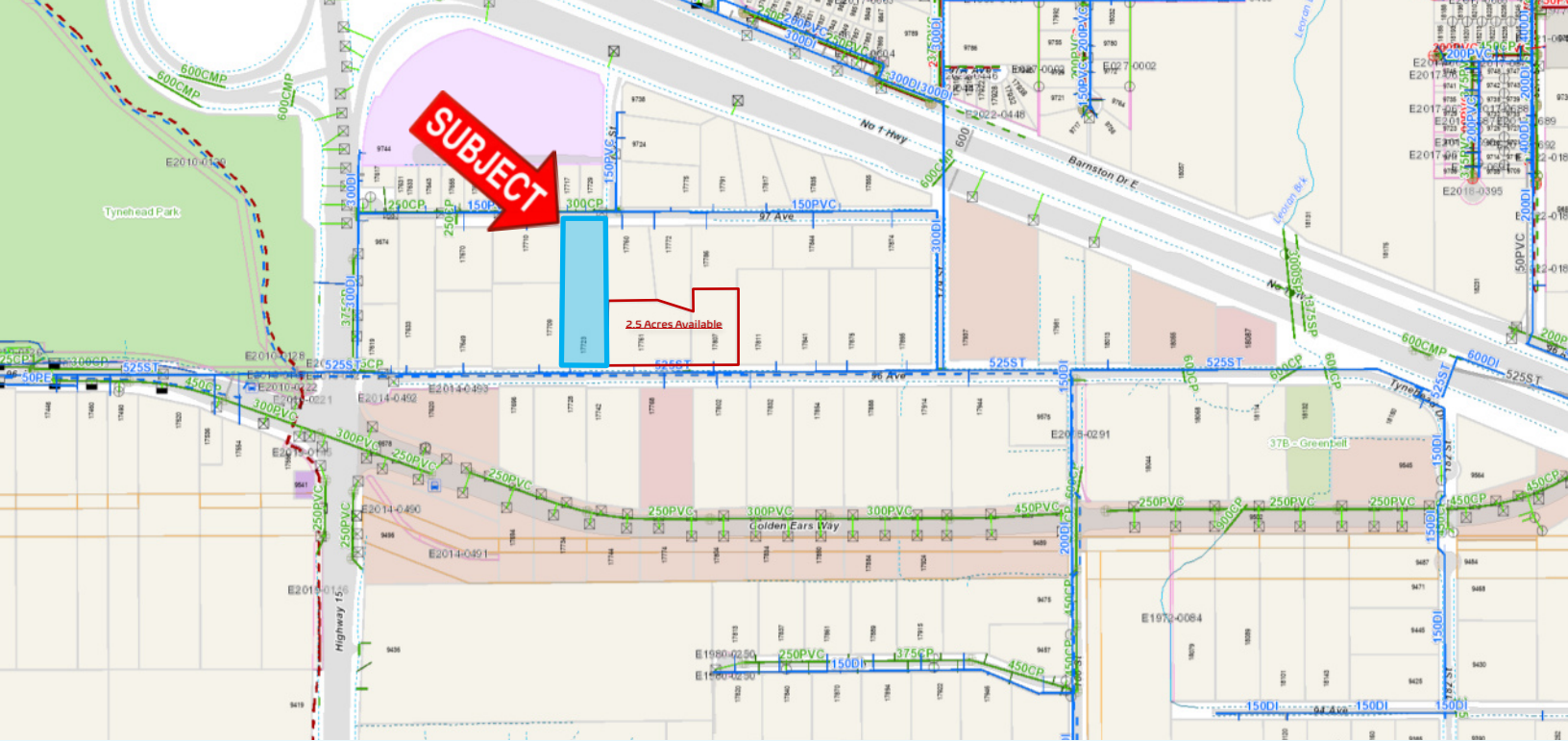


17723 96 Avenue Surrey  
(Anniedale-Tynehead)

**FOR SALE**

**ROYAL LEPAGE**

**INFRASTRUCTURE MAP**



**ACTIVE APPLICATION IN THE NEIGHBOURHOOD**

