

FOR LEASE

OFFERING
FLEX INDUSTRIAL
PRIME LOCATION IN RICHMOND

**#8-11220 Voyager Way
Richmond**

STREETFRONT INDUSTRIAL

to lease 2,376 sq.ft ground floor
space combine with retail/office
and high ceiling warehouse in North
Richmond.



About Property

Located in North Richmond, intersection
of Simpson Rd and Voyager Way.

Asking Lease Rate

- Base \$18.00 psf
- Additional estimate (2025) \$8.25 psf
- Begins with 3 year term

Property Features

- IR-1 Zoning
- Retail/Office
- Warehouse 18' Ceiling
- ONE (1) washroom
- 2376 sq. ft.

Get in Touch

604-644-9670 info@thevancouverites.ca
604-729-4326

Mike Yam PREC*
Jennifer Lin PREC*

PREC*states PERSONAL REAL ESTATE CORPORATION

© 2024 INE Collective Realty Inc. All rights reserved. E. & O.E.: The information contained herein was obtained from sources that we deem reliable and, while thought to be correct, is not guaranteed by INE Collective Realty Inc.

INECOLLECTIVE
realty



FOR LEASE

Zoning: IR - 1

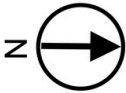
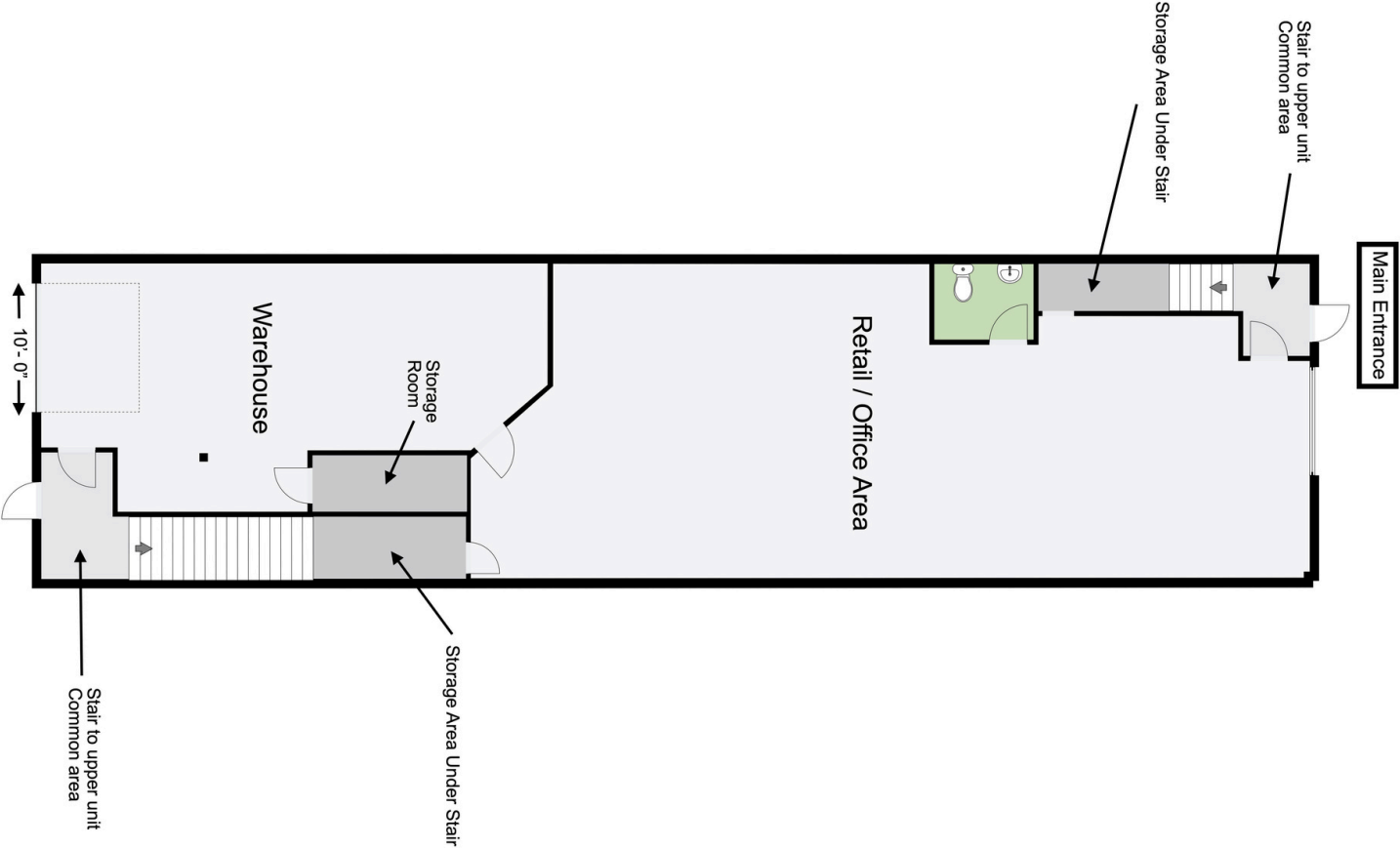
SIZE

2376 SQFT

LOCATION

8-11220 Voyageur Way
V6X 3E1 Richmond
BC
CA

▼ Ground Floor



CONTACT

MIKE YAM 604.644.9670
mike@thevancoverites.ca

JENNIFER LIN 604.729.4326
jennifer@thevancoverites.ca

THIS FLOORPLAN IS PROVIDED WITHOUT WARRANTY OF ANY KIND. SENSOPIA DISCLAIMS ANY WARRANTY INCLUDING, WITHOUT LIMITATION, SATISFACTORY QUALITY OR ACCURACY OF DIMENSIONS. ALL MEASUREMENT IS APPROXIMATED. NO GUARANTEES, NEED TO VERIFY IN YOUR EXPENSE.