

River Market

810 Quayside Drive
New Westminster, BC



Office Space | For Lease

CBRE

Property Details & Available Area



Basic Rent
Contact Listing Agent



Additional Rent
\$22.37 PSF (2026 estimate)



Availability
Suite 201* With notice
Suite 205* Immediate
Suite 213 Immediate



Area
Suite 201* 848 SF
Suite 205* 3,677 SF
Suite 213 628 SF

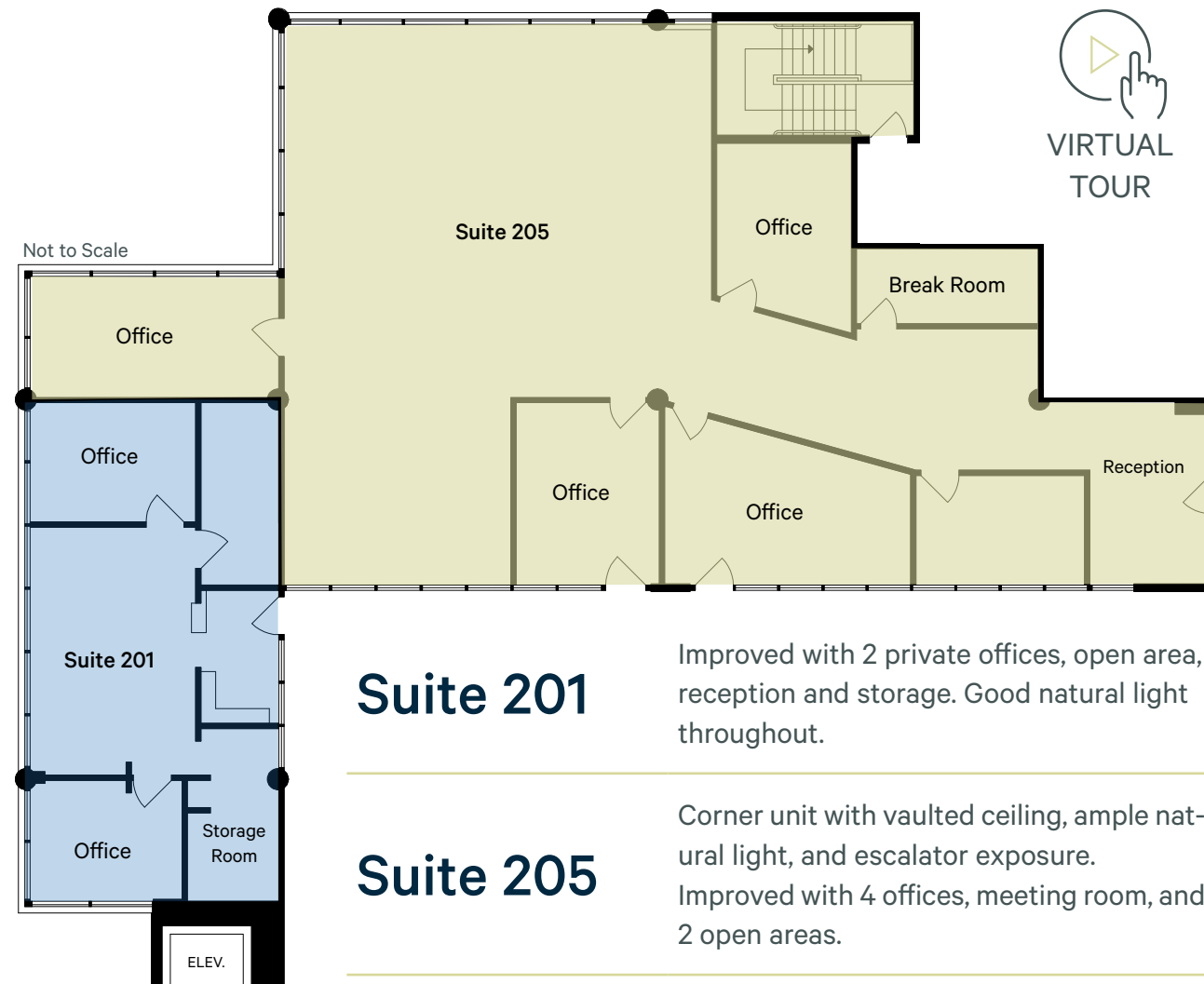
*Contiguous for total of 4,525 SF



Parking
Ample in close proximity



Public Access
9:00 a.m. - 8:00 p.m. (7 days a week)



Suite 201

Improved with 2 private offices, open area, reception and storage. Good natural light throughout.

Suite 205

Corner unit with vaulted ceiling, ample natural light, and escalator exposure. Improved with 4 offices, meeting room, and 2 open areas.

Suite 213

Bright open plan layout, currently used as a yoga studio.



Location

810 Quayside Drive offers a prime waterfront location ideal for users seeking a vibrant, amenity-rich environment. Situated within the River Market complex, this renowned mixed use market is steps from New Westminster SkyTrain Station, making commuting easy, and is surrounded by cafés, restaurants, and retail options. With flexible retail and office configurations and a professional atmosphere, 810 Quayside Drive is a compelling choice for businesses looking to establish themselves in a dynamic and accessible setting.



Contact Agents

Luke Gibson

Personal Estate Corporation
Senior Vice President | Office Properties
+1 604 662 5142
luke.gibson@cbre.com

Michael White

Vice President | Office Properties
+1 604 662 5120
michael.rm.white@cbre.com

This disclaimer shall apply to CBRE Limited, Real Estate Brokerage, and to all other divisions of the Corporation, to include all employees and independent contractors ("CBRE"). The information set out herein, including, without limitation, any projections, images, opinions, assumptions and estimates obtained from third parties (the "Information") has not been verified by CBRE, and CBRE does not represent, warrant or guarantee the accuracy, correctness and completeness of the Information. CBRE does not accept or assume any responsibility or liability, direct or consequential, for the Information or the recipient's reliance upon the Information. The recipient of the Information should take such steps as the recipient may deem necessary to verify the Information prior to placing any reliance upon the Information. The Information may change and any property described in the Information may be withdrawn from the market at any time without notice or obligation to the recipient from CBRE. CBRE and the CBRE logo are the service marks of CBRE Limited and/or its affiliated or related companies in other countries. All other marks displayed on this document are the property of their respective owners. All Rights Reserved.

Mapping Sources: Canadian Mapping Services canadamapping@cbre.com; DMTI Spatial, Environics Analytics, Microsoft Bing, Google Earth.