

Office Space For Lease



The Shorehill Building

*1155 West Pender Street
Vancouver, BC*

CBRE



Improved Office Space in the Well-Recognized Landmark Building in the Financial Core

Located centrally between Thurlow and Bute Streets on the north side of West Pender, the Shorehill Building is surrounded by numerous restaurants and cafés, a short walk away from Vancouver Convention Centre, and is accessible by all major transit lines servicing the Greater Vancouver area.

Premises	
Suite #200:	3,093 SF
Suite #201:	2,232 SF
Suite #308:	1,524 SF
Suite #400:	11,618 SF
Suite #600:	8,375 SF

Asking Net Rent
Contact Agent

Additional Rent
\$17.80 per SF (2026 est.)

Suite #200

3,093

SF

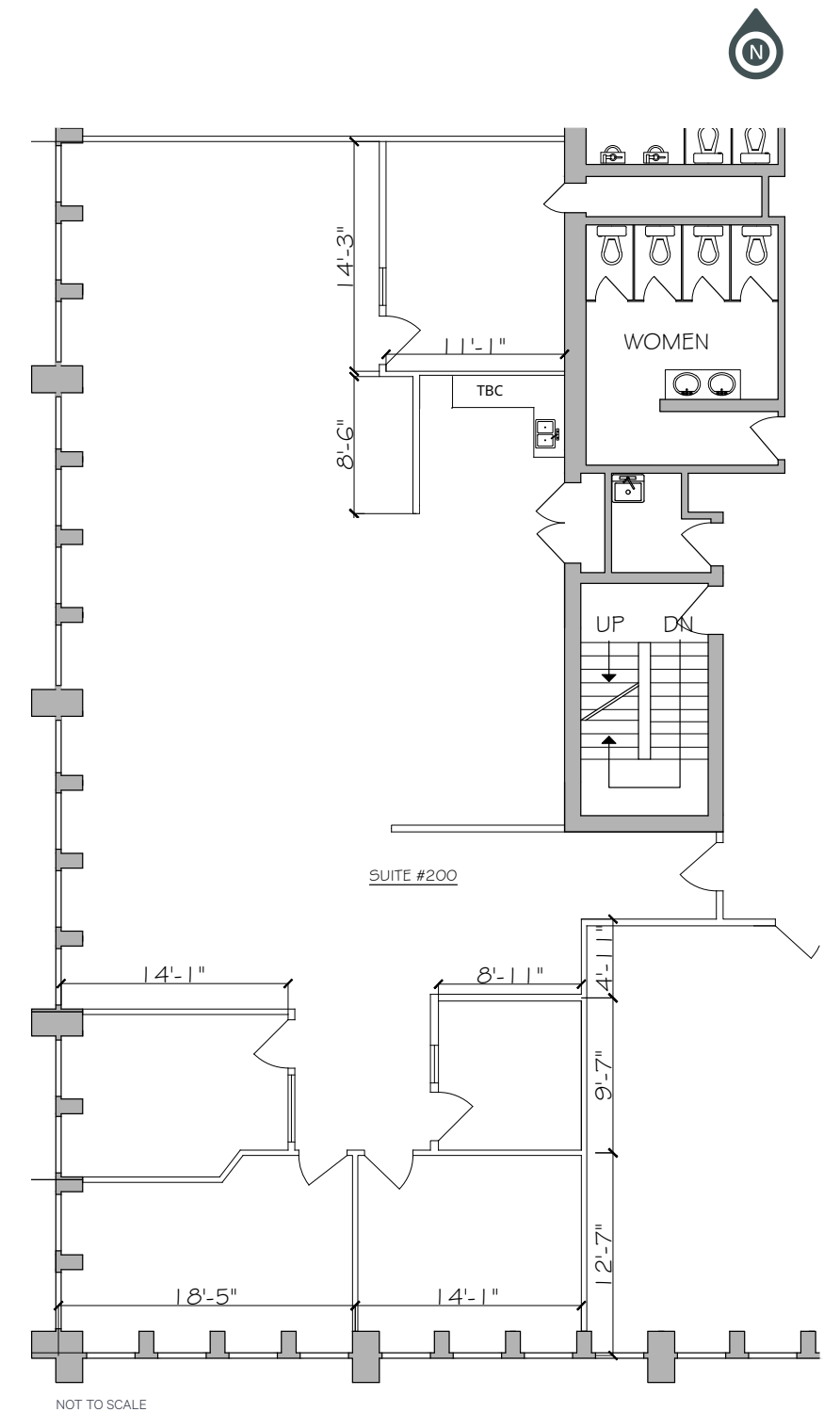
Available

Immediately

Improvements

- + 4 offices
- + Meeting room
- + Kitchen / lunchroom
- + Open area
- + Move-in condition

 **Virtual
Tour**



Suite #201

2,232

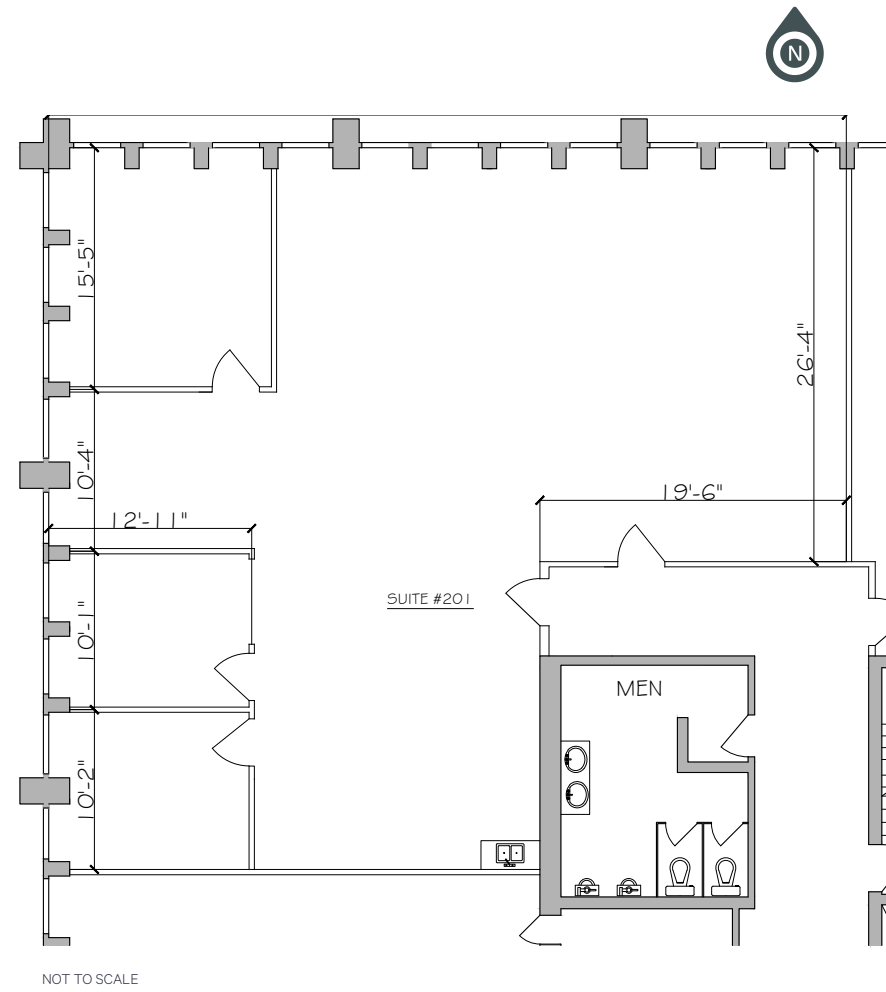
SF

Available

Immediately

Improvements

- + 3 offices
- + Open area
- + Kitchen
- + Move-in condition



 **Virtual
Tour**

Suite #308

1,524

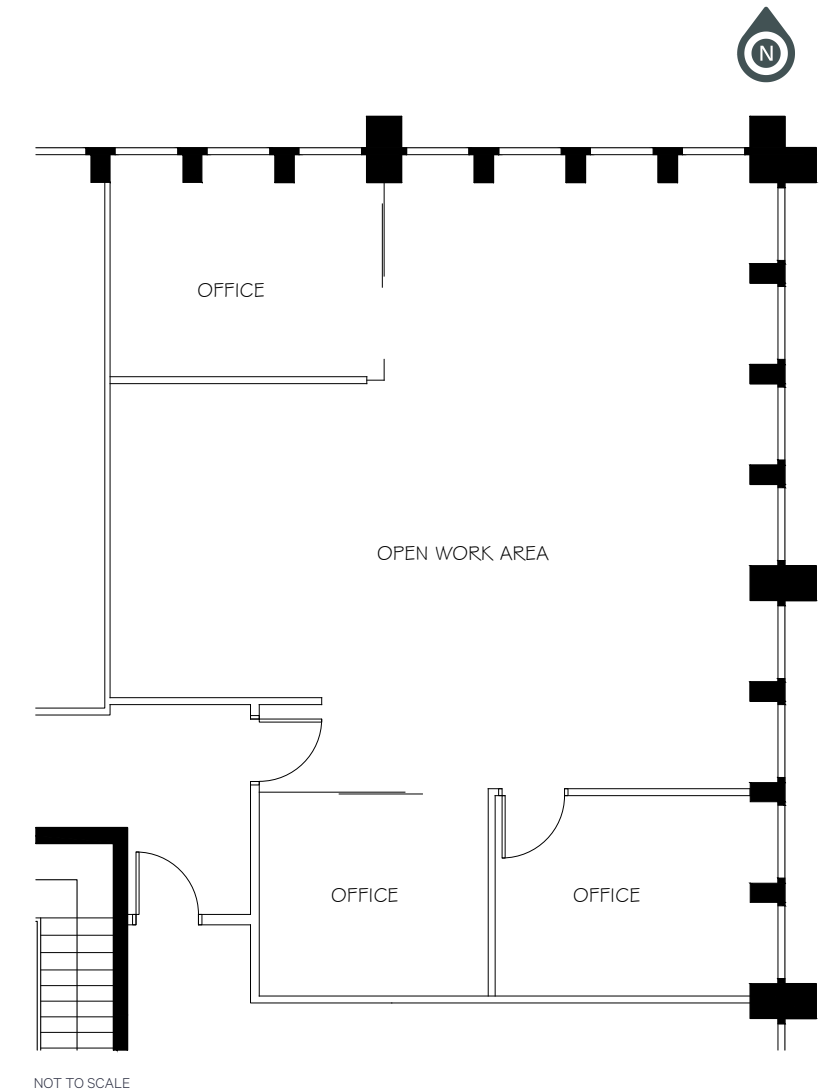
SF

Available

Immediately

Improvements

- + 3 offices
- + Open area
- + Move-in condition



 **Virtual
Tour**

Suite #400

11,618

SF

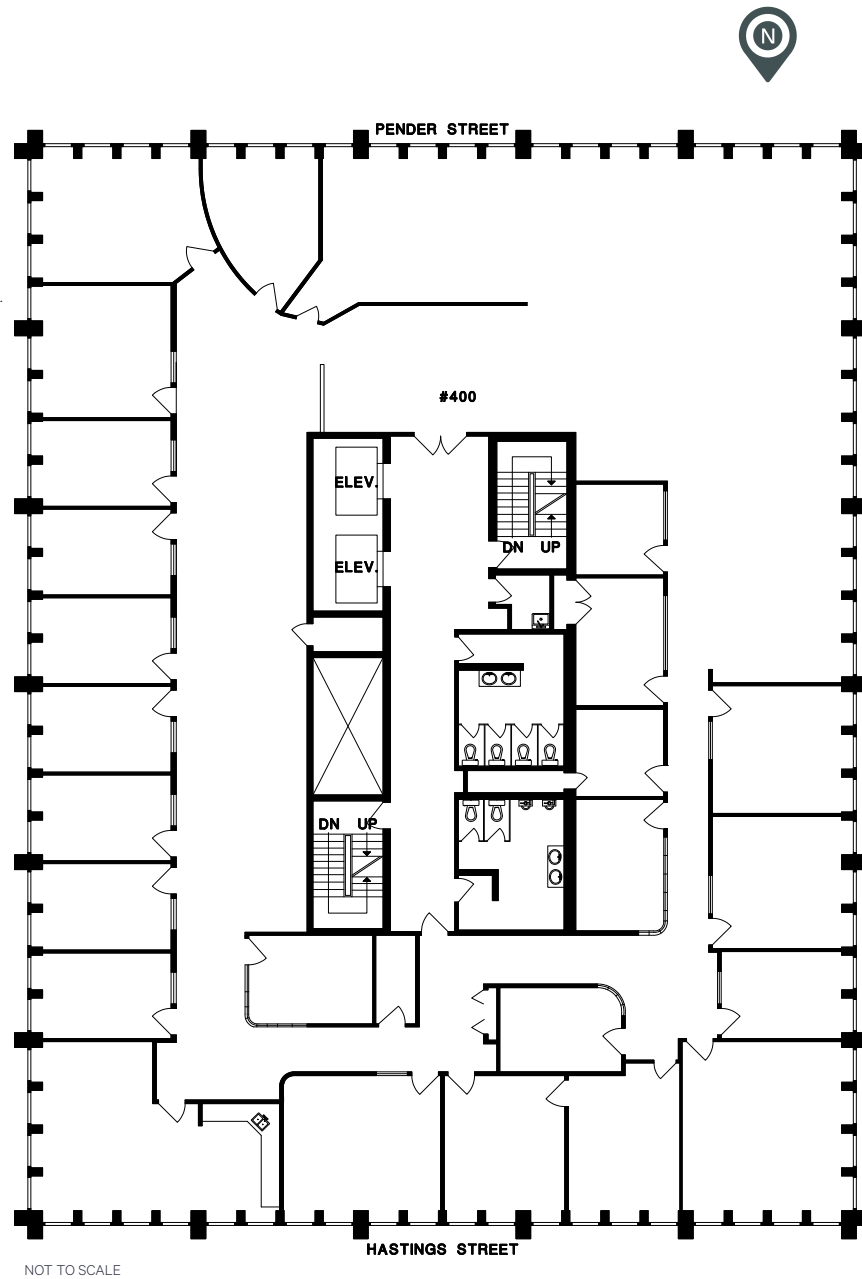
Available

Immediately

Improvements

- + Full floor
- + Multiple offices
- + Meeting rooms
- + Kitchen / lunchroom
- + Server room
- + Open area

 **Virtual
Tour**



Suite #600

8,375

SF

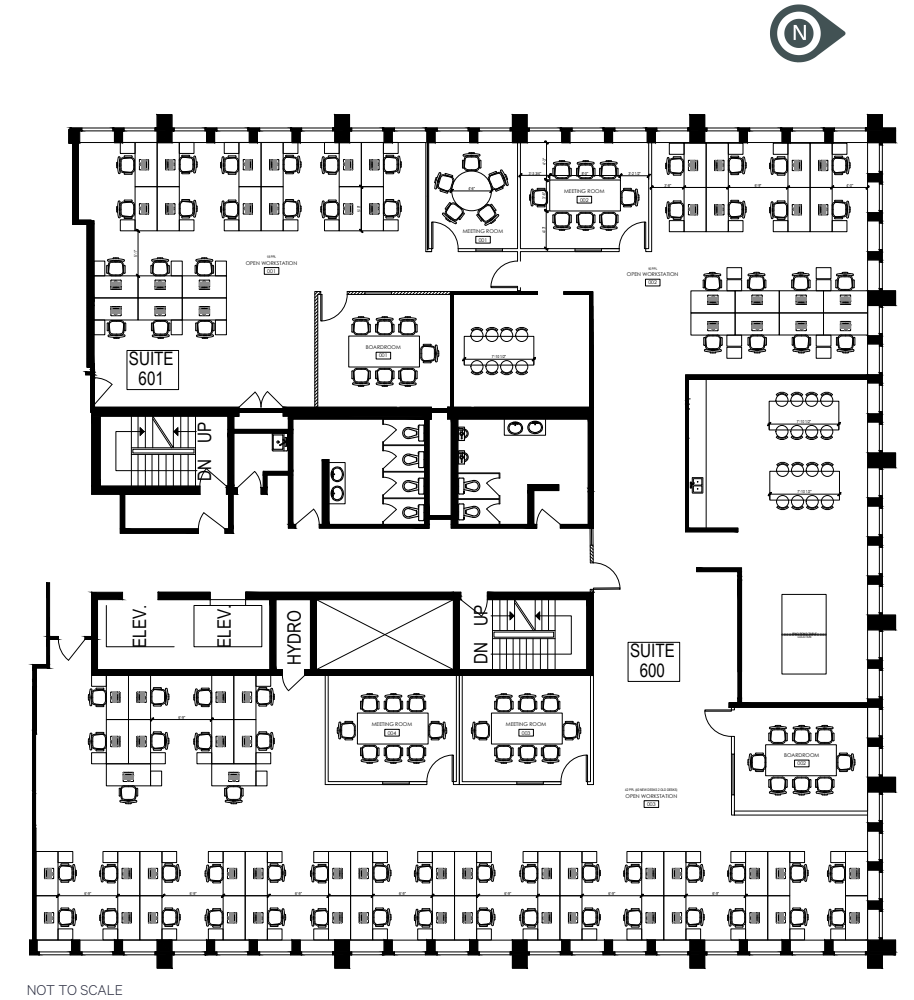
Available

Immediately

Improvements

- + Mostly open plan
- + 4 meeting rooms
- + 2 offices
- + Large lunchroom
- + Coffee station
- + Great views

 **Virtual
Tour**



Office Space For Lease

Suites 200, 201, 308, 400, 600 - 1155 West Pender Street
Vancouver, BC

Contact

Geoff Donelly

Personal Real Estate Corporation
Senior Vice President | Office Properties
geoff.donelly@cbre.com
604 662 5130



CBRE Limited | 1021 West Hastings Street #2500, Vancouver, BC www.cbre.ca

This disclaimer shall apply to CBRE Limited, Real Estate Brokerage, and to all other divisions of the Corporation; to include all employees and independent contractors ("CBRE"). All references to CBRE Limited herein shall be deemed to include CBRE, Inc. The information set out herein, including, without limitation, any projections, images, opinions, assumptions and estimates obtained from third parties (the "Information") has not been verified by CBRE, and CBRE does not represent, warrant or guarantee the accuracy, correctness and completeness of the Information. CBRE does not accept or assume any responsibility or liability, direct or consequential, for the Information or the recipient's reliance upon the Information. The recipient of the Information should take such steps as the recipient may deem necessary to verify the Information prior to placing any reliance upon the Information. The Information may change and any property described in the Information may be withdrawn from the market at any time without notice or obligation to the recipient from CBRE. CBRE and the CBRE logo are the service marks of CBRE Limited and/or its affiliated or related companies in other countries. All other marks displayed on this document are the property of their respective owners. All Rights Reserved. Mapping Sources: Canadian Mapping Services canadamapping@cbre.com; DMTI Spatial, Environics Analytics, Microsoft Bing, Google Earth