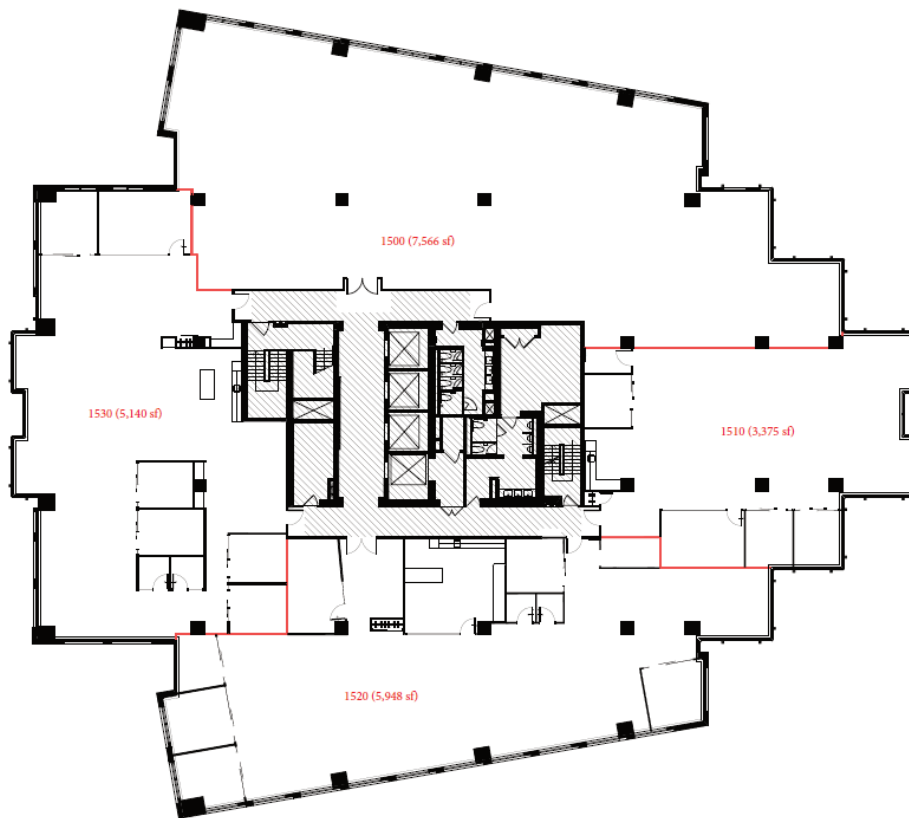


Updated: 2026

Suite Features

45 O'Connor Street
—
World Exchange Plaza



Suite
1510

Rentable Area
3,375 SF (stm)

Availability: Q4 2026

Key features:

- Brand new model suite, currently under construction
- High end model suite finishes
- Kitchenette, two offices, one boardroom, a small meeting room, plus open areas for workstations

Additional Rent:

- \$29.36 PSF

Stephanie Thompson
Director, Leasing
Sales Representative
QuadReal Property Group, Brokerage

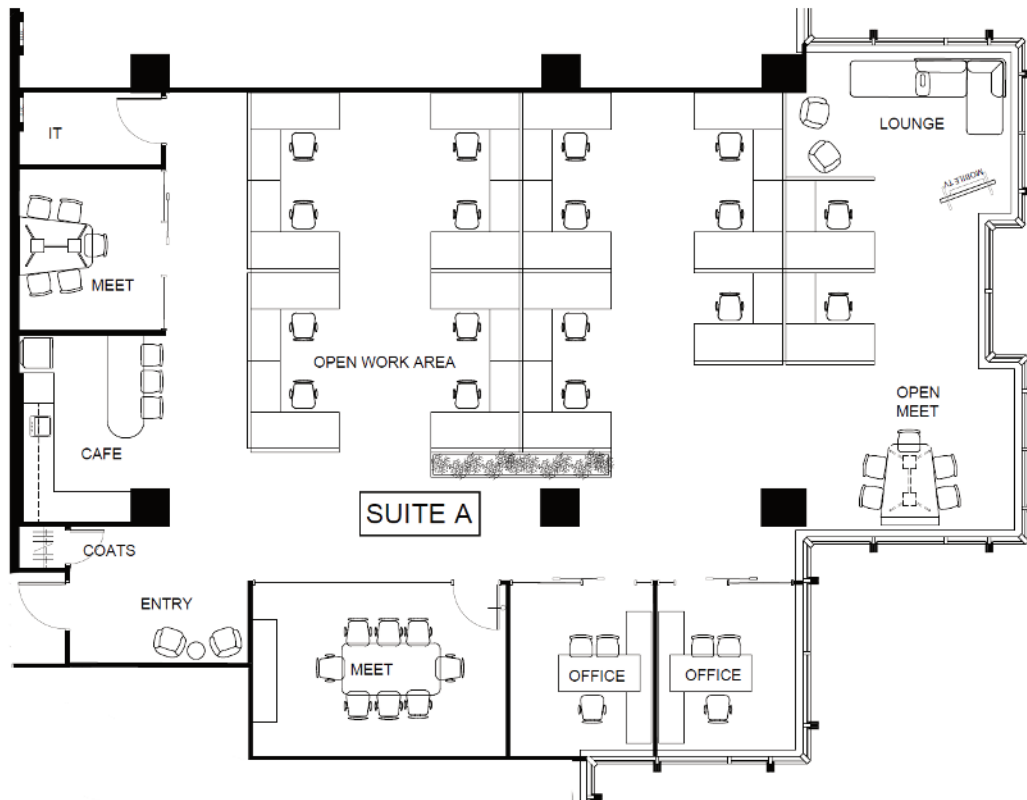
T 613 690 7394
E Stephanie.Thompson@quadreal.com
W www.quadreal.com



Furniture Plan

45 O'Connor Street
—

Suite
1510



*For visioning purposes