



DREAM  
COLLECTION  
FINANCIAL DISTRICT



PREMIUM OFFICE LEASING OPPORTUNITIES

# 330 Bay Street

# Leasing Opportunities

## Building Specifications

<b>Size</b>	167,184SF
<b>Year Built</b>	1925
<b>Number Of Floors</b>	16
<b>Tenant Conference Room*</b>	Small room \$230 /day Large room \$345 /day Multi room \$460/day
*Plus 15% administrative fee and applicable taxes	
<b>Operating Costs</b>	\$22.65 (PSF/YR)
<b>Realty Tax</b>	\$8.88 (PSF/YR)
<b>Total Additional Rent</b>	\$31.53 (PSF/YR)

## Certifications



BOMA Best Certified Silver



WELL Health and Safety Rated 2024

## Building Features

- Public Transit Surface Route
- 8'6" Ceiling Height (slab to T-bar)
- Satellite Dish Capability
- Fibre Optic Capability
- Central HVAC Distribution system
- Fire Detection System
- Sprinkler System
- Manned Security

## On-site Amenities

- Tenant Conference Centre
- 24/7 Security
- CKTL & Co.
- Estiatorio Milos

## Nearby Amenities

- PATH System
- Hy's Steakhouse & Cocktail Bar
- Daphne's Restaurant
- John & Sons Oyster House
- Florin Trattoria
- Starbucks
- CF Toronto Eaton Centre
- All Major Banks
- Fitness Centres
- Nathan Phillips Square
- St. Regis Hotel



[View virtual tour\\*](#) ↗

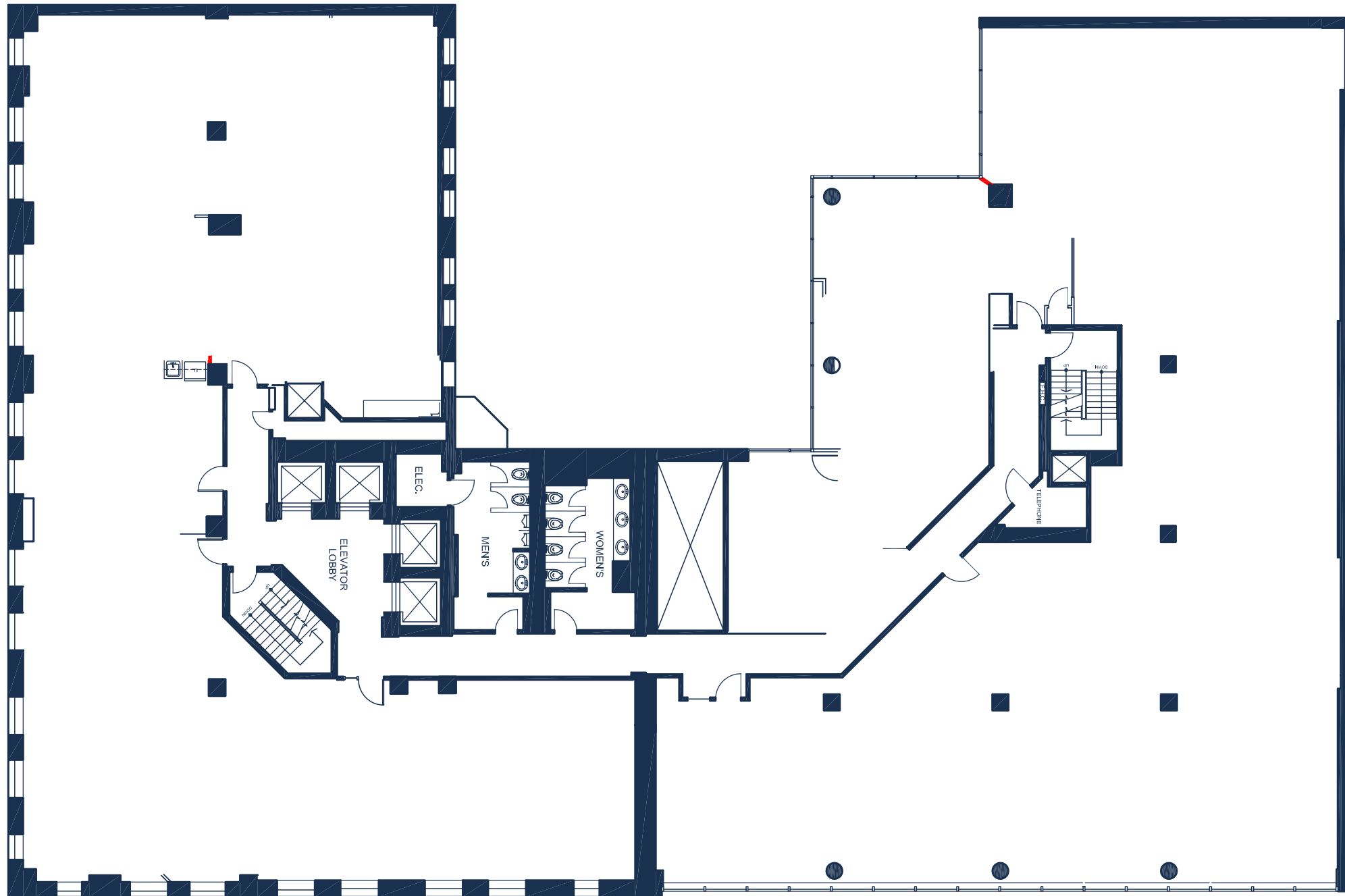
\*Virtual tour is artist rendering. Not as delivered.

- **16<sup>th</sup> Floor**  
Data Centre  
Full Floor Opportunity  
Suite 1600 | 5,576 SF | Available Immediately
- **14<sup>th</sup> Floor - Contiguous: 6,078 SF**  
Suite 1401 | 1,464 SF | **MODEL SUITE**  
Sep 1, 2026  
Suite 1400 | 4,614 SF | **MODEL SUITE**  
Available Immediately
- **13<sup>th</sup> Floor**  
Suite 1304 | 1,651 SF | Jan 1, 2027
- **12<sup>th</sup> Floor**  
Suite 1200 | 1,443 SF | **MODEL SUITE**  
Sep 1, 2026
- **8<sup>th</sup> Floor**  
Suite 812 | 2,969 SF | **MODEL SUITE**  
Sep 1, 2026
- **7<sup>th</sup> Floor**  
Suite 700 | 8,024 SF | April 1, 2027
- **6<sup>th</sup> Floor**  
Suite 610 | 4,402 SF | Available Immediately
- **5<sup>th</sup> Floor**  
Suite 509 | 2,322 SF | Available Immediately  
Suite 507 | 2,288 SF | Available Immediately  
Suite 500 | 2,638 SF | Available Immediately
- **3<sup>rd</sup> Floor - Full Floor Opportunity**  
Suite 300 | 13,347 SF | Available Immediately
- **2<sup>nd</sup> Floor**  
Suite 200 | 6,965 SF | Nov 1, 2026

THE BUILDING -

# Standard Floorplate

~13,000 SF | 8'6" Ceiling Height | Full floor suite in base building condition



ELEVATING YOUR EXPERIENCE-

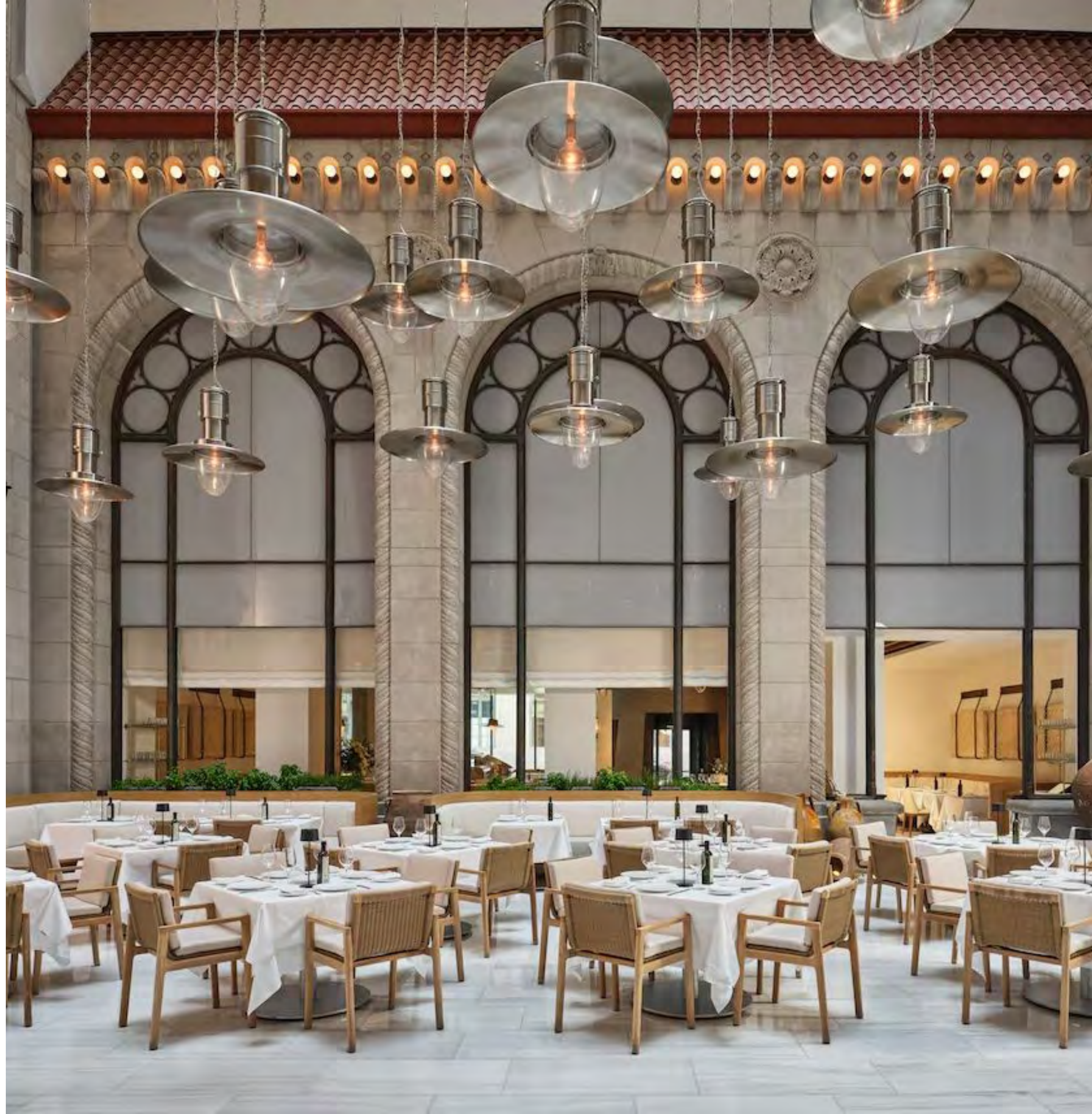
# Recent Improvements

- Newly renovated lobby and washrooms
- State-of-the-Art building systems
- Modern and refreshed common areas, elevators, and facade



ELEVATING YOUR EXPERIENCE-

# Amenities at Your Doorstep

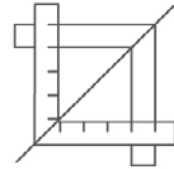


DREAM OFFICE-

# Stress-Free Turnkey



Expertly designed,  
furnished and  
move-in ready



Experienced in-house  
Project Management  
and Construction Team



Simplified process  
committed to making  
design and move in  
easy for tenants



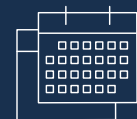
## Short-Form Lease



Straight  
to Lease



Seven Page  
Document



For Short-Term  
Deals Only

Three years and under

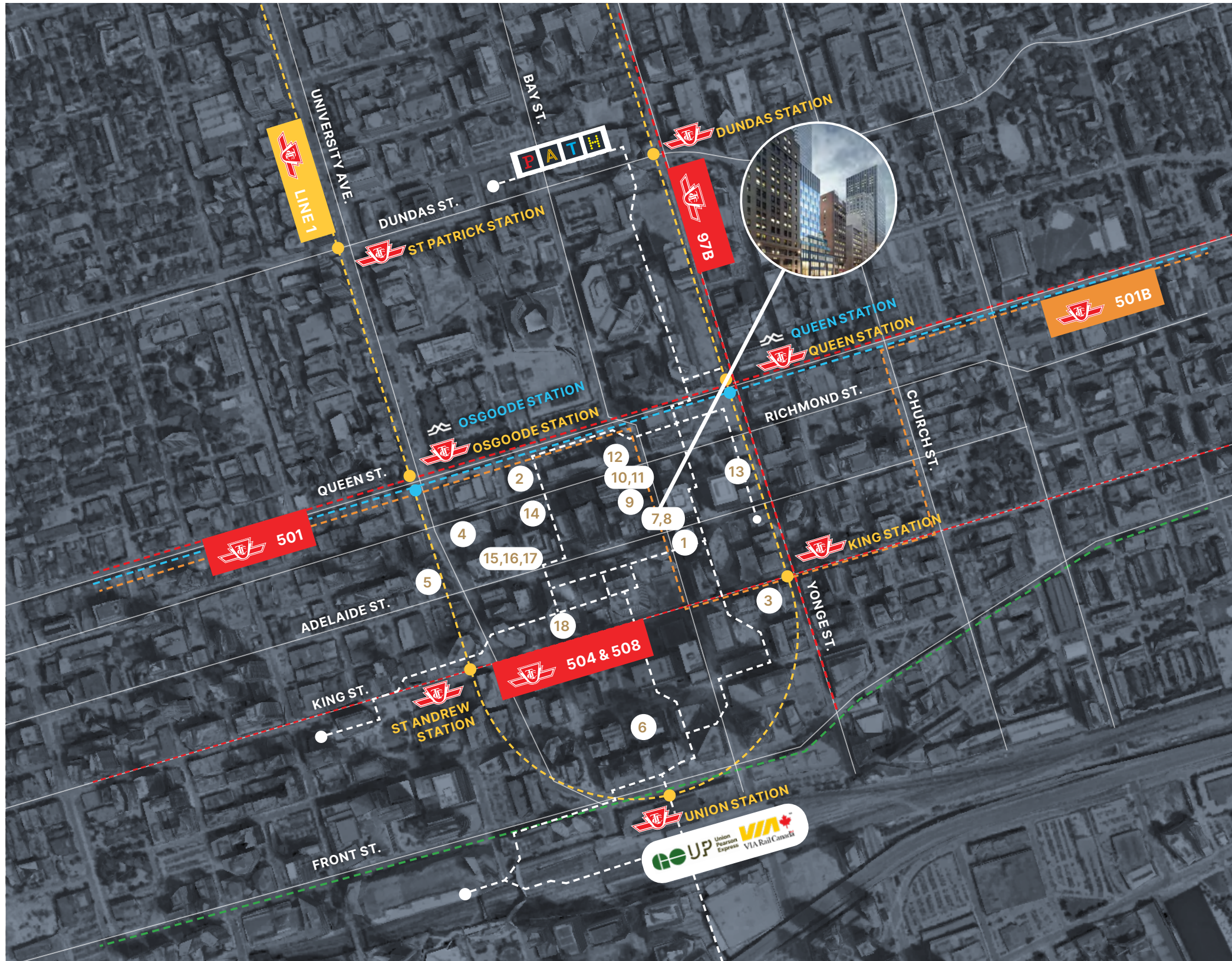
# Best in Class Accessibility



- Yonge-University Subway Line
- TTC Bus Route
- Future Ontario Line
- GO Transit Line
- Green P Parking

- 38 min.**  
Pearson International via UP Express
- 20 min.**  
Drive to Billy Bishop Airport
- 5 min.**  
Walk to Queen Station or King Station
- 5 min.**  
Walk to Union Station

# A Hub of Convenience & Culture



## Hotels

- 1 The St. Regis Toronto: 63m
- 2 Sheraton Centre Toronto: 450m
- 3 One King West Hotel & Residence: 350m
- 4 Hilton Toronto: 500m
- 5 Shangri-La Toronto: 500m
- 6 Fairmont Royal York: 650m

## Food & Beverage

- 7 Estiatorio Milos: On-site
- 8 CKTL & Co.: On-site
- 9 John & Sons Oyster House: 110m
- 10 Daphne Restaurant: 170m
- 11 Wine Academy: 170m
- 12 Florin' on Richmond: 180m
- 13 The Chase: 260m
- 14 Chef's Hall: 350m
- 15 Alobar: 350m
- 16 Sushi Yugen: 350m
- 17 Chop Restaurant & Steakhouse: 350m
- 18 Black + Blue: 400m

- Yonge-University Subway Line
- TTC Bus Route
- Future Ontario Line
- GO Transit Line

**Byron Ahmet\***  
Executive Vice President  
byron.ahmet@cbre.com  
416 815 2354

**Jennifer Millar\*\***  
Associate Vice President  
jennifer.millar@cbre.com  
647 328 8859

**Christopher Valela\*\***  
Associate Vice President  
chris.valela@cbre.com  
416 662 2477

**CBRE Limited**  
Real Estate Brokerage  
145 King St W  
Toronto, ON. M5H 1J8



This disclaimer shall apply to CBRE Limited, Real Estate Brokerage, and to all other divisions of the Corporation; to include all employees and independent contractors ("CBRE"). All references to CBRE Limited herein shall be deemed to include CBRE, Inc. The information set out herein, including, without limitation, any projections, images, opinions, assumptions and estimates obtained from third parties (the "Information") has not been verified by CBRE, and CBRE does not represent, warrant or guarantee the accuracy, correctness and completeness of the Information. CBRE does not accept or assume any responsibility or liability, direct or consequential, for the Information or the recipient's reliance upon the Information. The recipient of the Information should take such steps as the recipient may deem necessary to verify the Information prior to placing any reliance upon the Information. The Information may change and any property described in the Information may be withdrawn from the market at any time without notice or obligation to the recipient from CBRE. CBRE and the CBRE logo are the service marks of CBRE Limited and/or its affiliated or related companies in other countries. All other marks displayed on this document are the property of their respective owners. All Rights Reserved.

\*Broker \*\*Sales Representative