

A photograph of a modern, multi-story office building with a glass and white facade, located at 595 Howe Street in Vancouver, BC. The building is surrounded by other city buildings and a clear blue sky with some clouds. A street sign for 'Dunsmuir St.' is visible in the foreground.

**595 Howe Street** | Vancouver, BC

**FOR LEASE** | **Good Earth Building**

Opportunity to lease office space in the heart of the downtown financial core. The Good Earth Building is within one block of Pacific Centre as well as public transportation with all major bus routes and SkyTrain. The building amenities include access to high-speed Internet/fiber optics.

**The RGD Team:**

**Rob DesBrisay**

Managing Partner

604 691 6602

[rdesbrisay@naicommercial.ca](mailto:rdesbrisay@naicommercial.ca)

**Irene Yung**

Director of Operations

604 691 6606

[iyung@naicommercial.ca](mailto:iyung@naicommercial.ca)

**NAI Commercial**

1075 W Georgia St, Suite 1300

Vancouver, BC V6E 3C9

+1 604 683 7535

[naicommercial.ca](http://naicommercial.ca)

# Good Earth Building

## 595 Howe Street

Vancouver, BC

### Location

The Good Earth Building is located in the heart of Downtown Vancouver at the corner of Dunsmuir and Howe Streets. Pacific Centre, Downtown Vancouver's largest shopping mall, is located directly across the street with an abundance of additional retail amenities surrounding the property. Access to public transportation is outstanding with all major bus routes and SkyTrain within one block of the property.

### Available Units

Unit	Availability	Size
<b>202</b>	August 1 <sup>st</sup> , 2026	1,637 SF
Northwest corner suite featuring two private offices and a small kitchen area, with abundant natural light throughout.		
<b>308</b>	Immediate	1,649 SF
Nicely finished southwest corner with four offices on the window and a larger one window meeting room and a kitchen area.		
<b>506</b>	Immediate	2,452 SF
Stunning southwest corner unit with sleek plank flooring. Boasts four private offices, a dedicated phone booth room, and a modern open-concept kitchen.		
<b>702</b>	Immediate	812 SF
Rare small corner suite open plan, facing south and east. Fantastic small corner suite.		
<b>1000</b>	Immediate	7,642 SF
Rare full floor, 17 perimeter offices, two boardrooms, and a lunch room.		



### Property Details

#### Lease Rate

\$20.00/SF – \$29.00/SF

#### Additional Rent

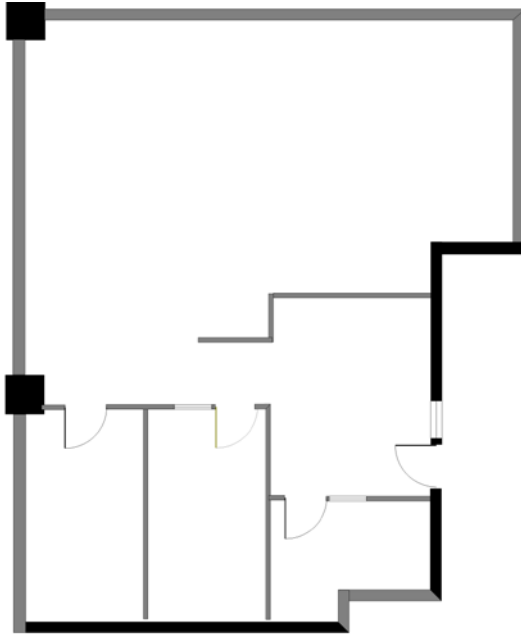
\$21.05/SF (2026 estimate)

#### Features

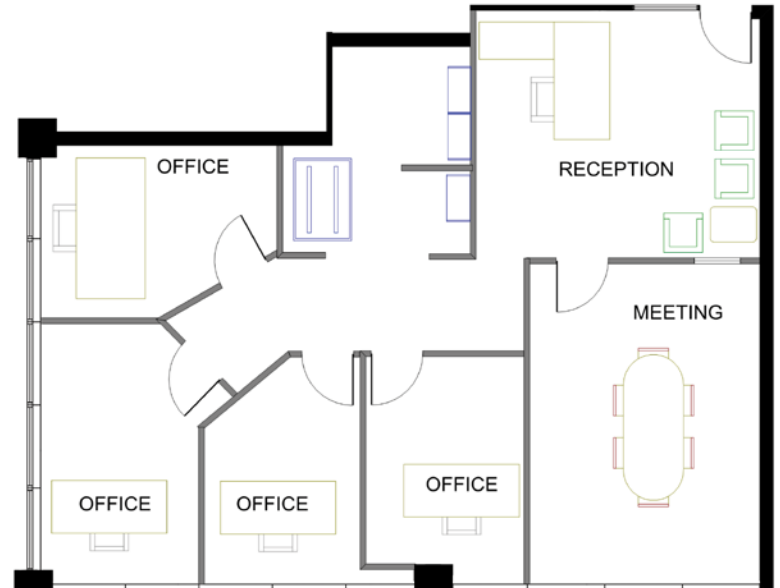
- ▶ Café with patio seating
- ▶ On-site management
- ▶ Premium retail access with Pacific Centre directly across the street
- ▶ Located in the heart of the downtown financial core
- ▶ Access to high speed Internet/fiber optics
- ▶ All major transportation links within a one block radius
- ▶ 70% of all major downtown office complexes located within a five minute walking distance

**NAI Commercial**

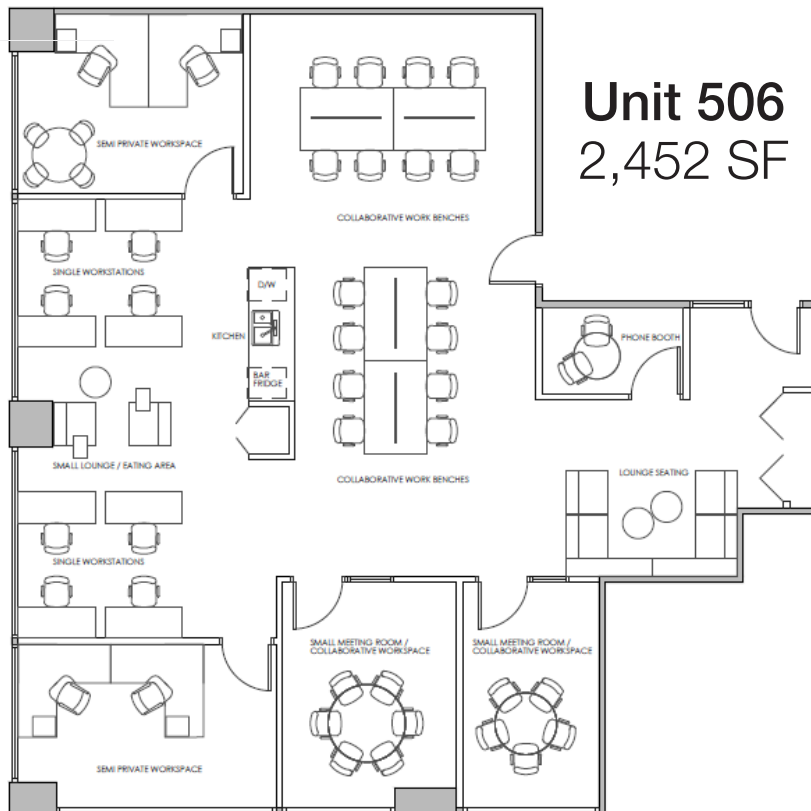
**Unit 202**  
1,637 SF



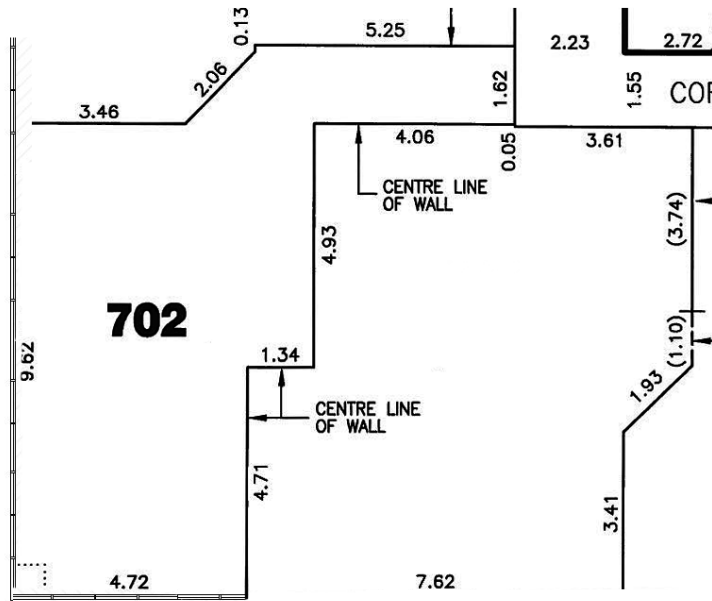
**Unit 308**  
1,649 SF



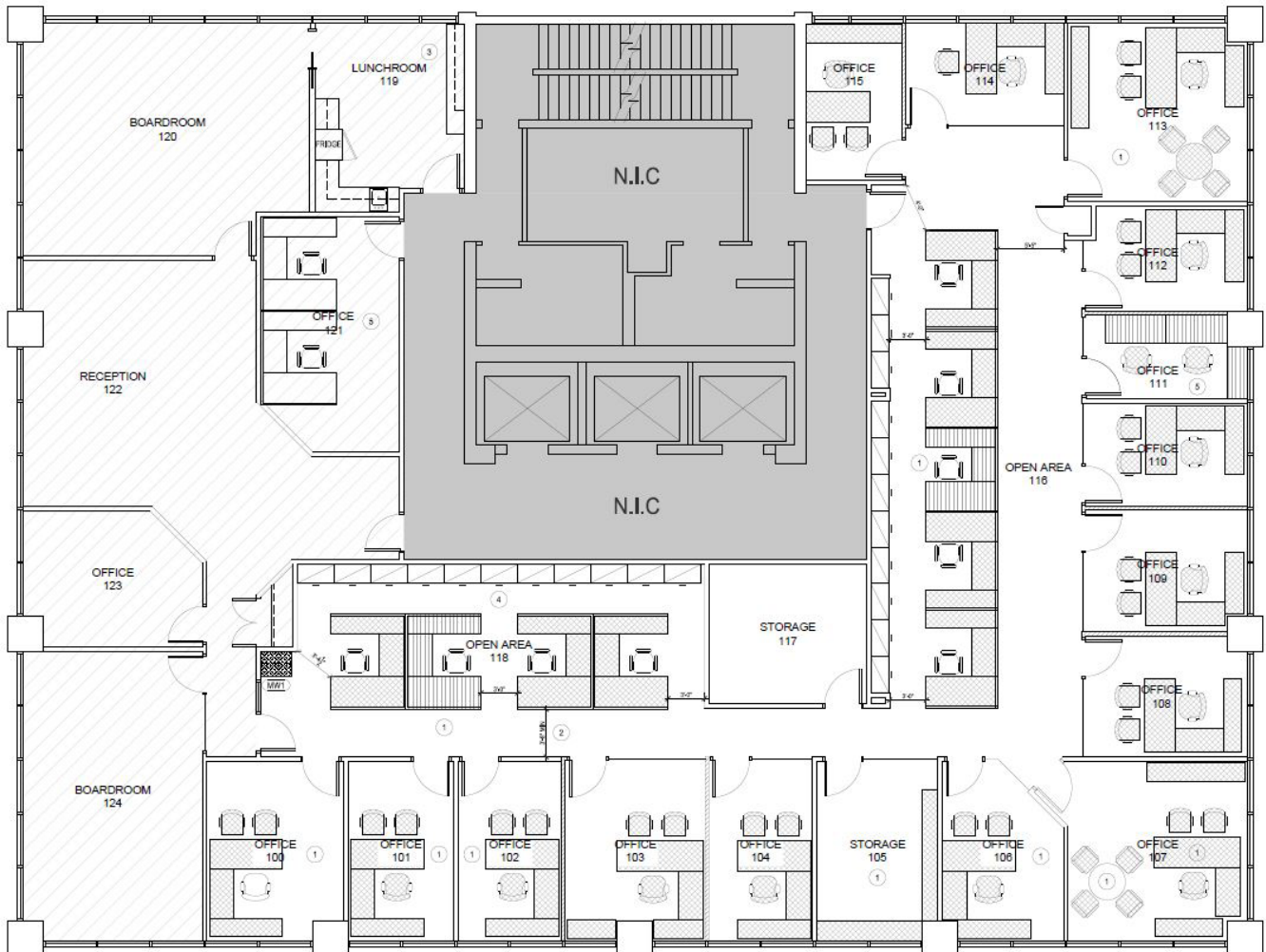
**Unit 506**  
2,452 SF



**Unit 702**  
812 SF



**Unit 1000**  
7,642 SF





BMO

bental centre

Scotiabank

WATERFRONT

595  
HOWE

pacific centre

GRANVILLE

VANCOUVER CITY CENTRE

98  
100

The RGD Team:

Rob DesBrisay  
Managing Partner  
604 691 6602  
rdesbrisay@naicommercial.ca

Irene Yung  
Director of Operations  
604 691 6606  
iyung@naicommercial.ca

NAI Commercial

NAI Commercial  
1075 W Georgia St, Suite 1300  
Vancouver, BC V6E 3C9  
+1 604 683 7535  
naicommercial.ca

No warranty or representation, express or implied, is made as to the accuracy of the information contained herein, and the same is submitted subject to errors, omissions, change of price, rental or other conditions, prior sale, lease or financing, or withdrawal without notice, and of any special listing conditions imposed by our principals no warranties or representations are made as to the condition of the property or any hazards contained therein are any to be implied. Aerial image(s) courtesy of Google, Landsat/Copernicus