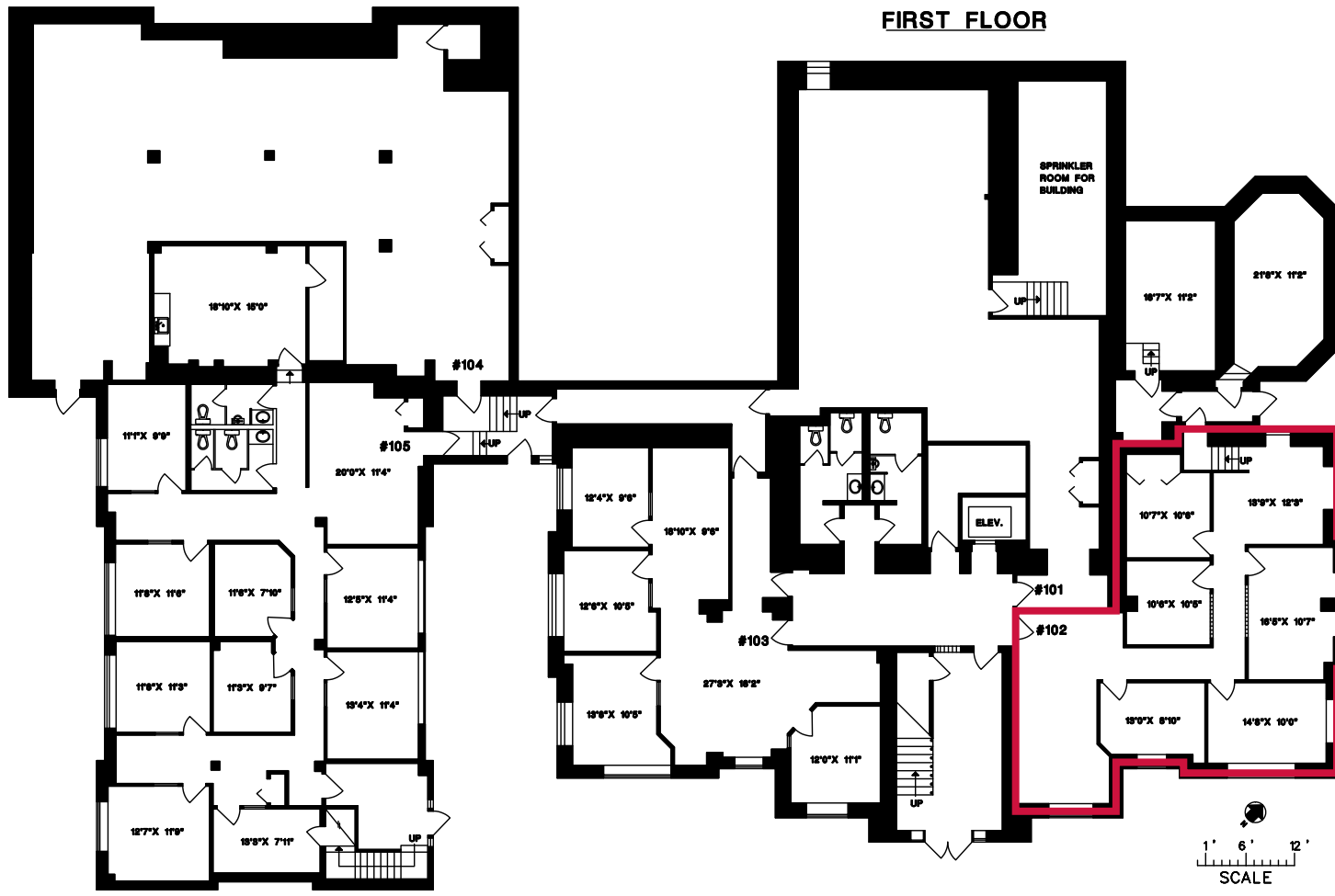


FOR LEASE | HISTORIC "BEGBIE COURT" | OFFICE
FIRST FLOOR – 668 CARNARVON
NEW WESTMINSTER, BC



Sean Ogilvie
D 604.630.3402 O 604.684.7117
email: sean.ogilvie@lee-associates.com

Disclaimer: Although the information contained within is from sources believed to be reliable, no warranty or representation is made as to its accuracy being subject to errors, omissions, conditions, prior lease, withdrawal or other changes without notice and same should not be relied upon without independent verification. © Lee & Associates Commercial Real Estate (BC) Ltd. All Rights Reserved. 01/13/25.