



Availabilities

Unit #200	429 sf
Unit #202	5,184 sf
Unit #206	5,016 sf
Unit #304D	517 sf

Lease rate: Contact Listing

Additional Rent: \$18.34 psf.

Availability: Immediately

Highlights

- Prime Surrey Location, situated near King George Boulevard with excellent access to Surrey City Centre, Guildford, and major commuter routes.
- Close to multiple bus routes and minutes from SkyTrain.
- Available Units range from 429 to 5,184 square feet.
- Ample of surface parking available for staff and visitors.
- Café, restaurants, service retail, and daily needs conveniences within the plaza.
- Major Tenants include T&T Supermarket, Canada Computers, Sleep Country, Pharmasave, Dollar Tree and a variety of restaurants.

Aaron Burry

Principal, Client & Asset Advisory Services - Western Canada

604.757.4991

aaron.burry@avisonyoung.com

Details

Impact Plaza
10090 152 Street, Surrey

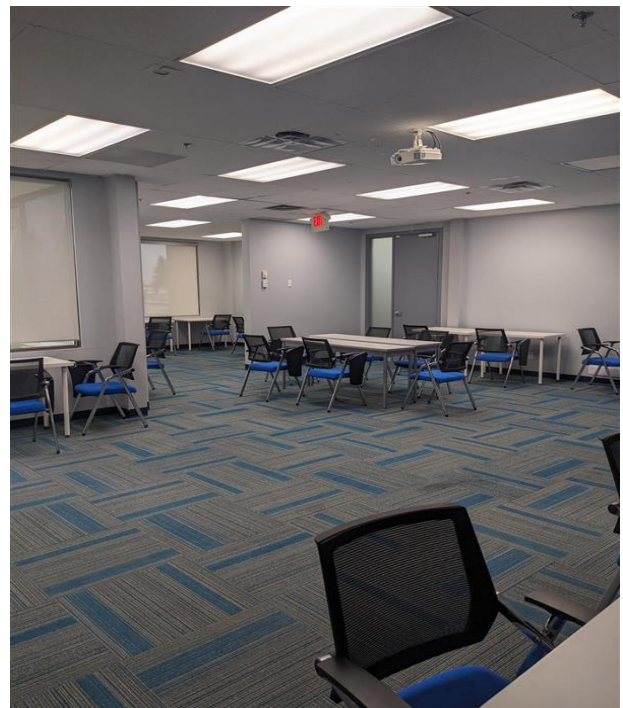
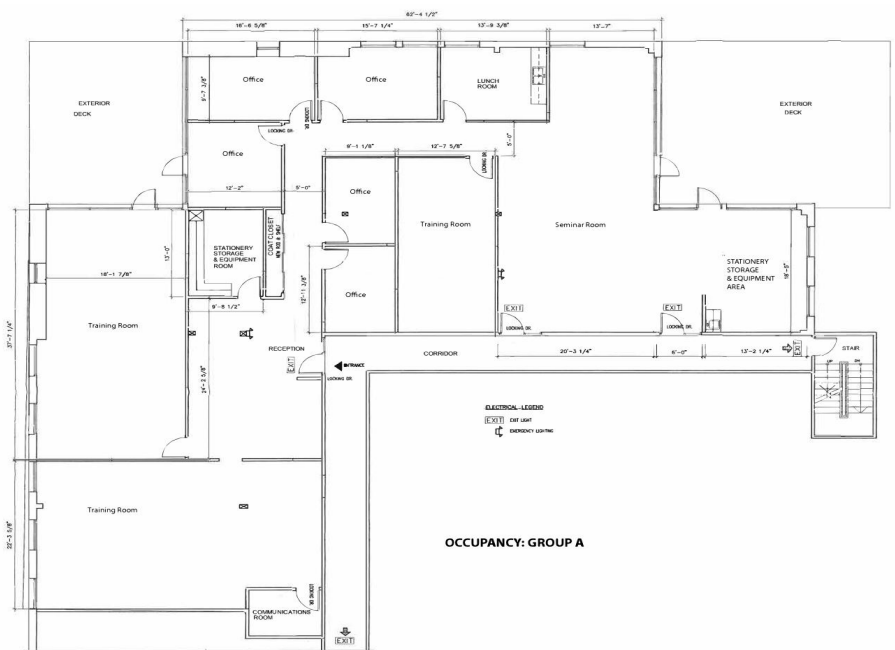
Unit #202
10090 152 Street, Surrey

Rentable area
5,184 sf

Availability
Immediately

Additional rent (2026 estimate)
\$18.34 psf

Lease rate
Contact listing agents



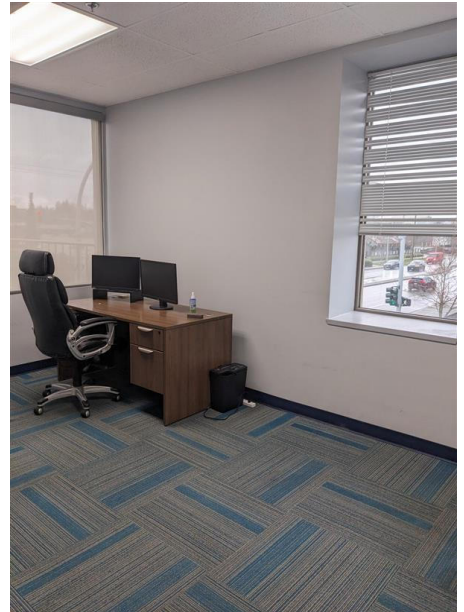
Aaron Burry
Principal, Client & Asset Advisory Services - Western Canada
604.757.4991
aaron.burry@avisonyoung.com

**AVISON
YOUNG**

Details

Impact Plaza
10090 152 Street, Surrey

Unit #202



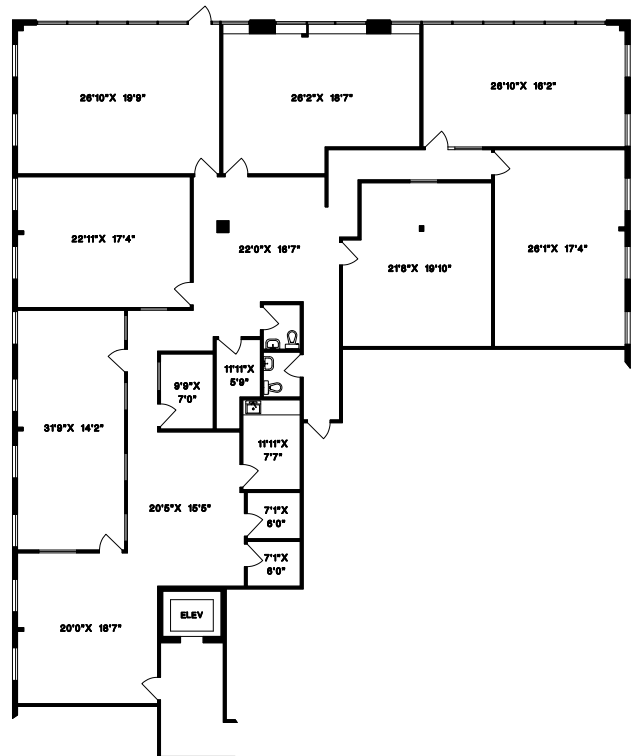
Unit #206
10090 152 Street, Surrey

Rentable area
5,016 sf

Availability
Immediately

Additional rent (2026 estimate)
\$18.34 psf

Lease rate
Contact listing agents



Aaron Burry
Principal, Client & Asset Advisory Services - Western Canada
604.757.4991
aaron.burry@avisonyoung.com

**AVISON
YOUNG**