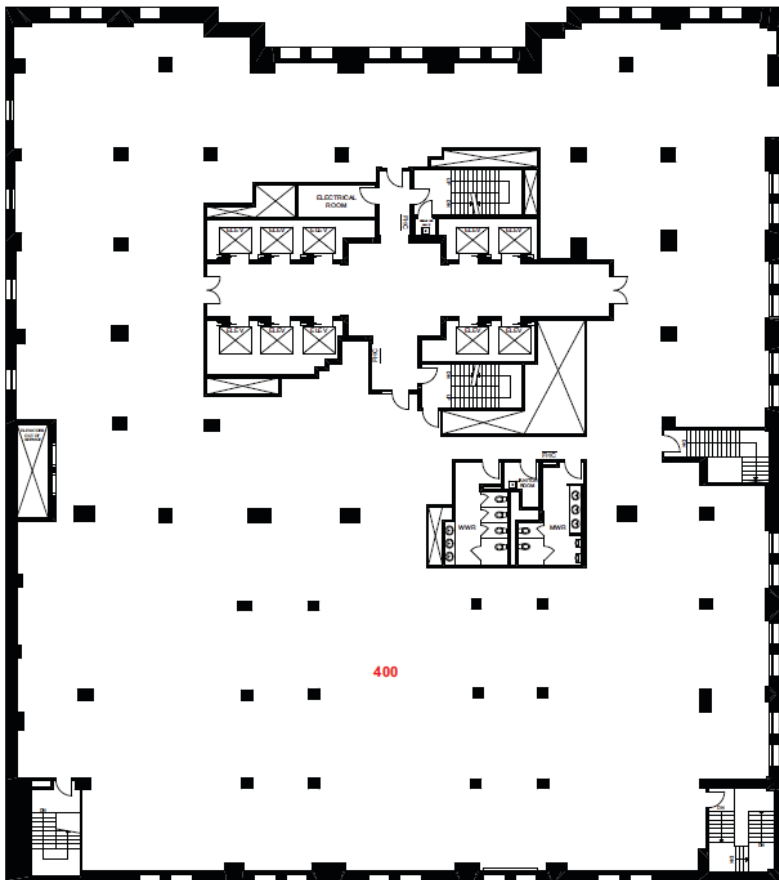


Updated: 2026

# Suite Features

25 King West  
—  
Commerce Court



**Suite**  
400

**Rentable Area**  
19,701 SF

**Availability:** January 1, 2027

**Operating costs:**  
\$23.24 per SF

**Realty taxes:**  
\$12.52 per SF

**Total additional rent:**  
\$36.76 per SF

**Key features:**

- Full floor
- Base building condition

**Kate LaBrash**  
Vice President, Office Leasing  
Broker  
QuadReal Property Group, Brokerage

T 416-673-7491  
E [Kate.LaBrash@quadreal.com](mailto:Kate.LaBrash@quadreal.com)  
W [www.quadreal.com](http://www.quadreal.com)

