

# Leasing Opportunity



Unit B2  
1620 Dickson Ave.  
Kelowna, BC

# Landmark 5

Unit B2



The Landmark District is a destination for locals built by a local team that's deeply committed to the future of our region. Strategically positioned in the centre of Kelowna, our neighbourhood has over one million square feet of retail, restaurants, and office space spread over 15 acres. Here, cutting-edge towers elevate Kelowna's skyline while thoughtful public areas provide space for leisure, connection and community events.

**Leasable Area**  
1,112 SF

**Space Type**  
Retail

**Availability**  
Inquire

**Building Name**  
Landmark 5

**Property Address**  
B2 - 1620 Dickson Ave.

**Parking**  
Free 3-hour  
visitor parking

**Asking Rents**  
Inquire

## Description

Beautifully built-out retail studio offers a modern, welcoming environment ideal for personal services, wellness, beauty, aesthetics, or boutique retail concepts.

## Reception Area

Welcoming reception area with expansive windows fronting Dickson Avenue

## Staff Room

**Featuring:** Sink, sitting area and private washroom.

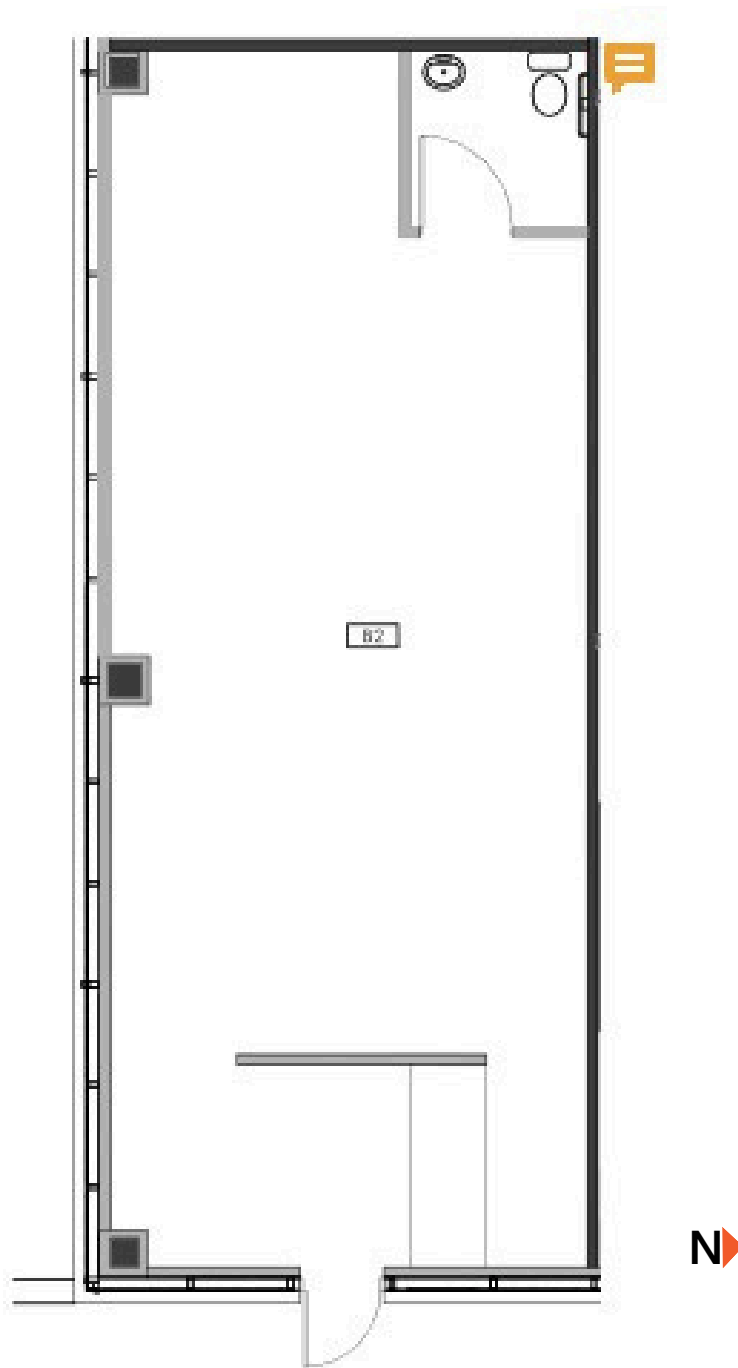
## Other

**Special Amenities:** Four, fully-equipped modern boardrooms available for bookings, two state of the art gyms, childcare options, on-site security and end of trip facilities.

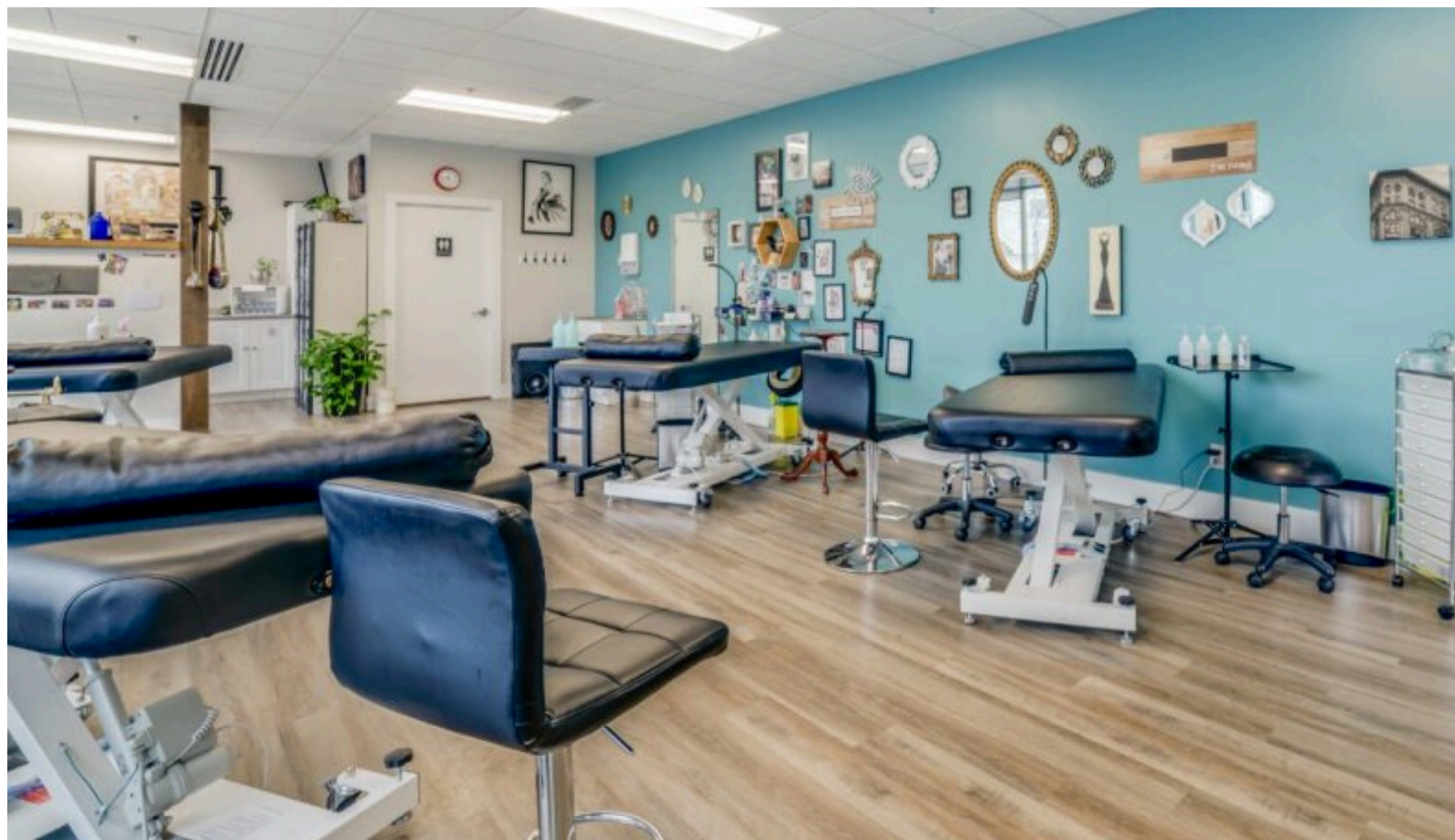
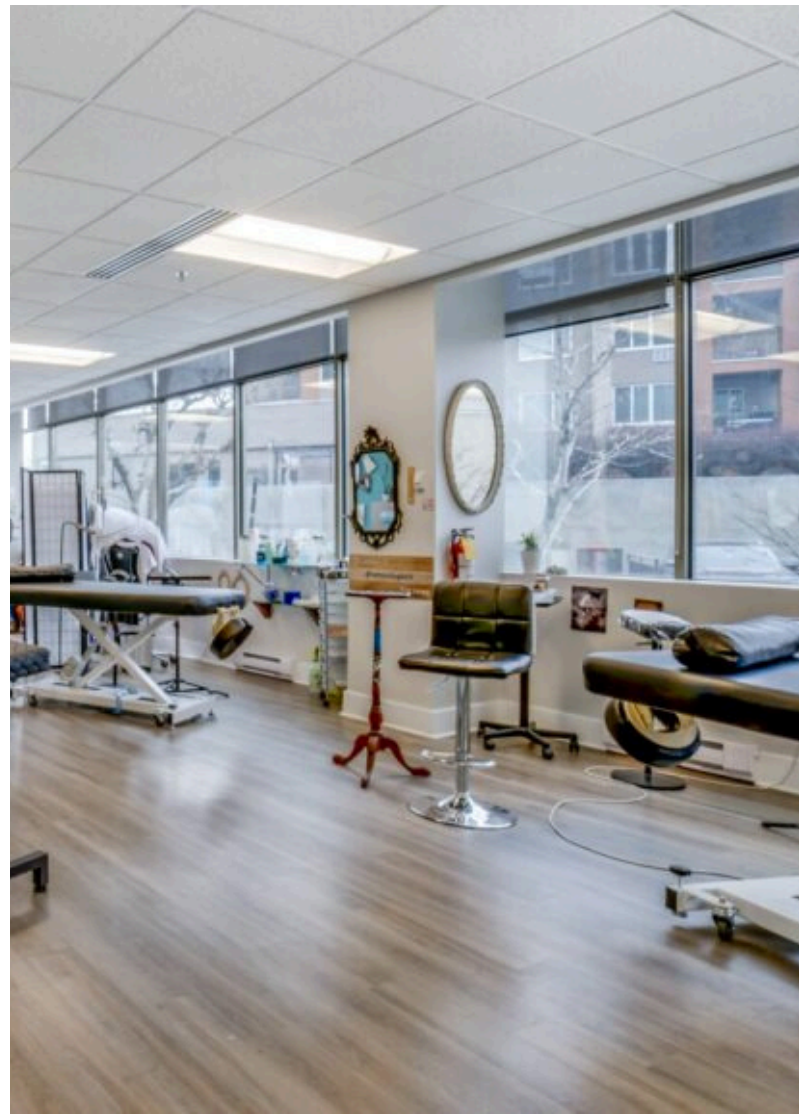


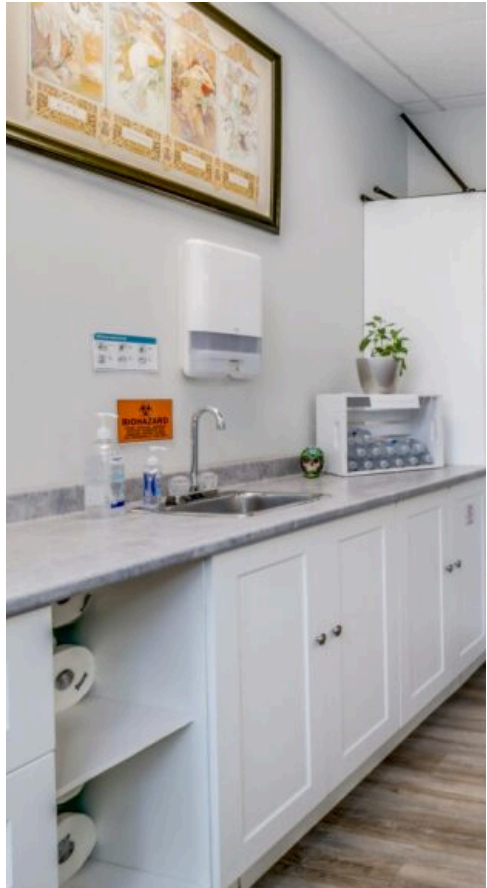
Unit  
**B2**  
Landmark 5

**Retail Space**  
Leasable Area:  
1,112 sq.ft



\*Floor plans and layouts are for illustrative purposes only and may vary slightly from the actual unit.





# Landmark

DISTRICT



250.763.2305

**General Enquiries**

[connect@landmarkdistrict.ca](mailto:connect@landmarkdistrict.ca)

**Leasing Enquiries**

[leasing@stobergroup.com](mailto:leasing@stobergroup.com)

**Website**

[www.landmarkdistrict.ca](http://www.landmarkdistrict.ca)

