



CBRE

For Sublease

2225 SHEPPARD AVENUE

19,900 SQ. FT.

Listing Agents:

BRYANT WILSON*

Vice President
bryant.wilson@cbre.com
+1 416 495 6278

CONNOR MACAULAY*

Senior Vice President
connor.macaulay@cbre.com
+1 416 847 3264

MICHELLE SABERON*

Senior Transaction Manager
michelle.saberon@cbre.com
+1 416 495 6318

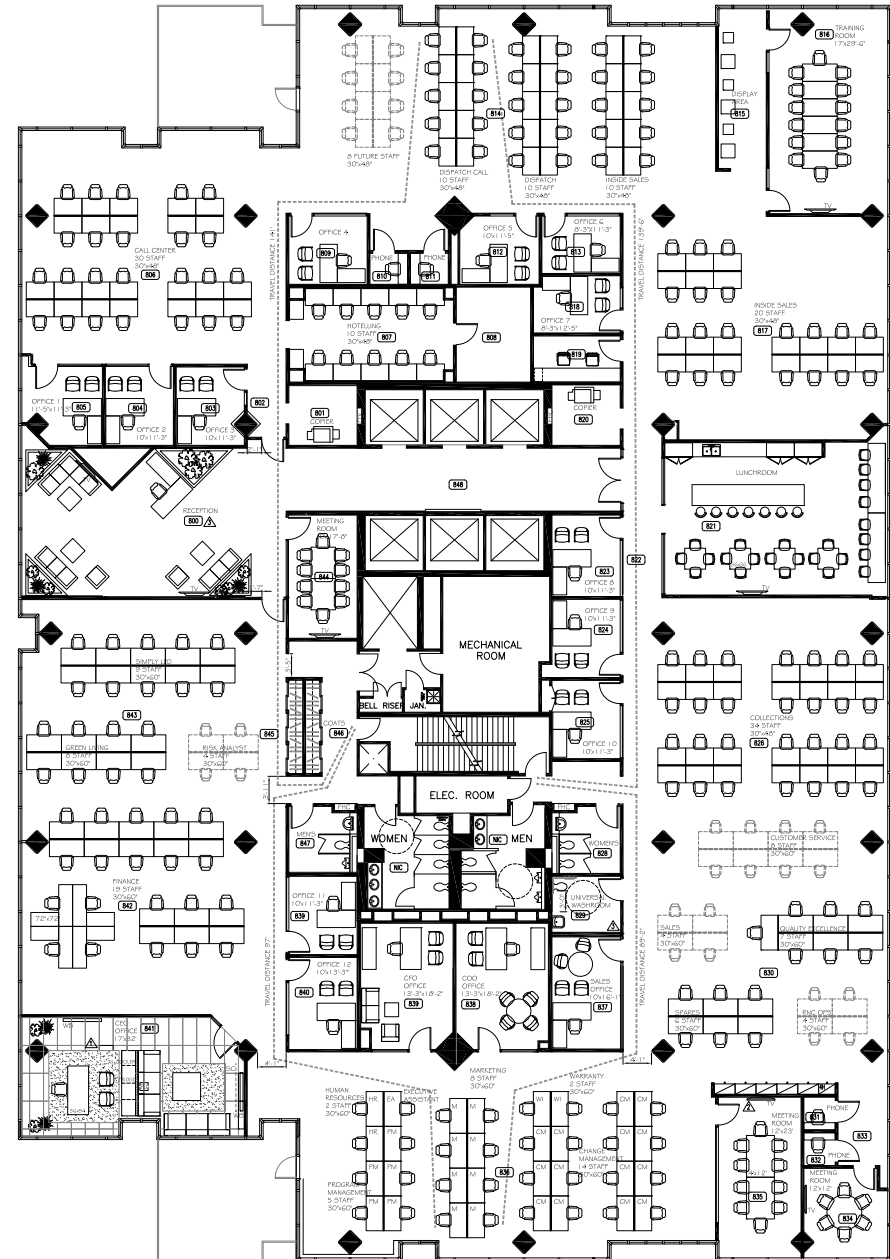
*Sales Representative

For Sublease
2225 SHEPPARD
 AVENUE

LISTING DETAILS

| | |
|-----------------|-------------------------------|
| Suite | 800 |
| Size | 19,900 sf |
| Expiry | December 31, 2024 |
| Net Rent | Please contact listing agents |
| Additional Rent | \$19.02 psf (2022 estimate) |
| Available | Immediately |
| Furniture | Negotiable |

FLOORPLAN



For Sublease
2225 SHEPPARD
AVENUE

PROPERTY HIGHLIGHTS

- + High-end leasehold improvements
- + Outstanding views
- + Full floor with exceptional elevator lobby and floor reception area
- + Multiple breakout and huddle rooms
- + Open concept seating
- + High quality cafeteria style kitchen
- + Lots of natural light
- + Glass offices throughout



This disclaimer shall apply to CBRE Limited, Real Estate Brokerage, and to all other divisions of the Corporation, to include all employees and independent contractors ("CBRE"). The information set out herein, including, without limitation, any projections, images, opinions, assumptions and estimates obtained from third parties (the "Information") has not been verified by CBRE, and CBRE does not represent, warrant or guarantee the accuracy, correctness and completeness of the Information. CBRE does not accept or assume any responsibility or liability, direct or consequential, for the information or the recipient's reliance upon the Information. The recipient of the Information should take such steps as the recipient may deem necessary to verify the information prior to placing any reliance upon the Information. The Information may change and any property described in the Information may be withdrawn from the market at any time without notice or obligation to the recipient from CBRE. CBRE and the CBRE logo are the service marks of CBRE Limited and/or its affiliated or related companies in other countries. All other marks displayed on this document are the property of their respective owners. All Rights Reserved.

CBRE

For Sublease
2225 SHEPPARD AVENUE



This disclaimer shall apply to CBRE Limited, Real Estate Brokerage, and to all other divisions of the Corporation, to include all employees and independent contractors ("CBRE"). The information set out herein, including, without limitation, any projections, images, opinions, assumptions and estimates obtained from third parties (the "Information") has not been verified by CBRE, and CBRE does not represent, warrant or guarantee the accuracy, correctness and completeness of the Information. CBRE does not accept or assume any responsibility or liability, direct or consequential, for the information or the recipient's reliance upon the Information. The recipient of the Information should take such steps as the recipient may deem necessary to verify the information prior to placing any reliance upon the Information. The Information may change and any property described in the Information may be withdrawn from the market at any time without notice or obligation to the recipient from CBRE. CBRE and the CBRE logo are the service marks of CBRE Limited and/or its affiliated or related companies in other countries. All other marks displayed on this document are the property of their respective owners. All Rights Reserved.

CBRE

For Sublease
**2225 SHEPPARD
AVENUE**

Listing Agents:

BRYANT WILSON*

Vice President
bryant.wilson@cbre.com
+1 416 495 6278

CONNOR MACAULAY*

Senior Vice President
connor.macaulay@cbre.com
+1 416 847 3264

MICHELLE SABERON*

Senior Transaction Manager
michelle.saberon@cbre.com
+1 416 495 6318

CBRE