


# FOR LEASE

## 700 SQ. FT.

### 10462 82 AVE EDMONTON, AB



 780-909-0199

 zoul@shaw.ca



**SLMJ**  
INVESTMENTS

## WHYTE AVE RETAIL SPACE

Leasing opportunity located in the heart of Old Strathcona on Edmonton's iconic Whyte Avenue. Situated in the busiest part of the strip and directly across from the newly renovated multi-million dollar Remedy Café complex.



700 Sq. Ft.



Quick possession available



Newly renovated storefront



Premium location on Whyte Avenue



Rear parking stall for employees



Signage opportunities





**FOR LEASE**

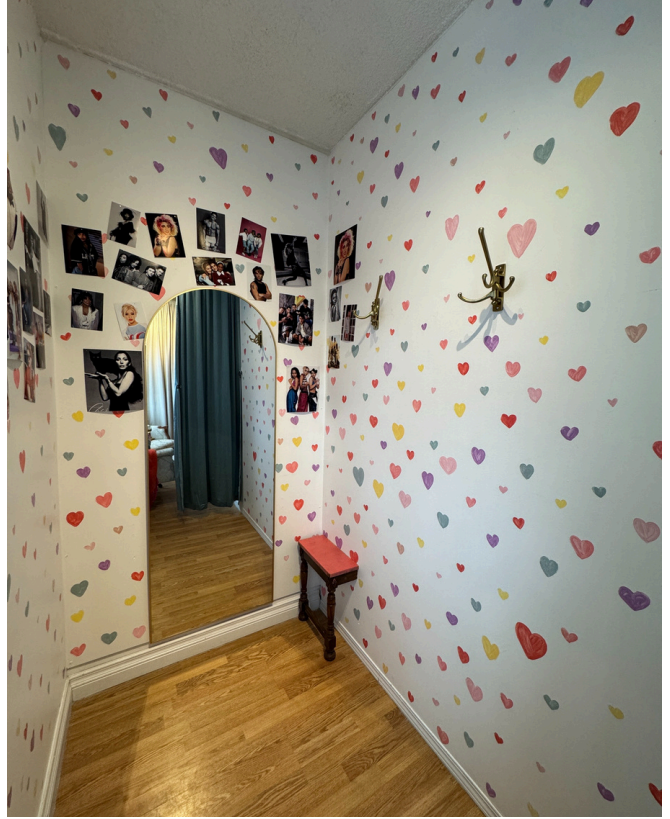
**10462 82 AVE  
EDMONTON, AB**



**780-909-0199**



**zoul@shaw.ca**



**FOR LEASE**

**10462 82 AVE  
EDMONTON, AB**



**780-909-0199**



**zoul@shaw.ca**