

1,260 SQ. FT.  
OFFICE SPACE



**FOR LEASE**

## **19 Grenfell Crescent, Suite 200 Nepean, ON K2G 0G3**

**Geoffrey H. Godding, CPM**  
COMMERCIAL REALTOR®  
613.720.1186  
geoffg@bell.net

**Royal LePage Integrity Realty**  
2148 Carling Ave. Units 5 & 6  
Ottawa, ON K2A 1H1  
*INDEPENDANTLY OWNED AND OPERATED*

**Kylene Gillies,**  
COMMERCIAL REALTOR®  
613.859.8998  
kylene@royallepage.ca

**“Proudly Canadian,  
National Strength, Commercial Expertise”**



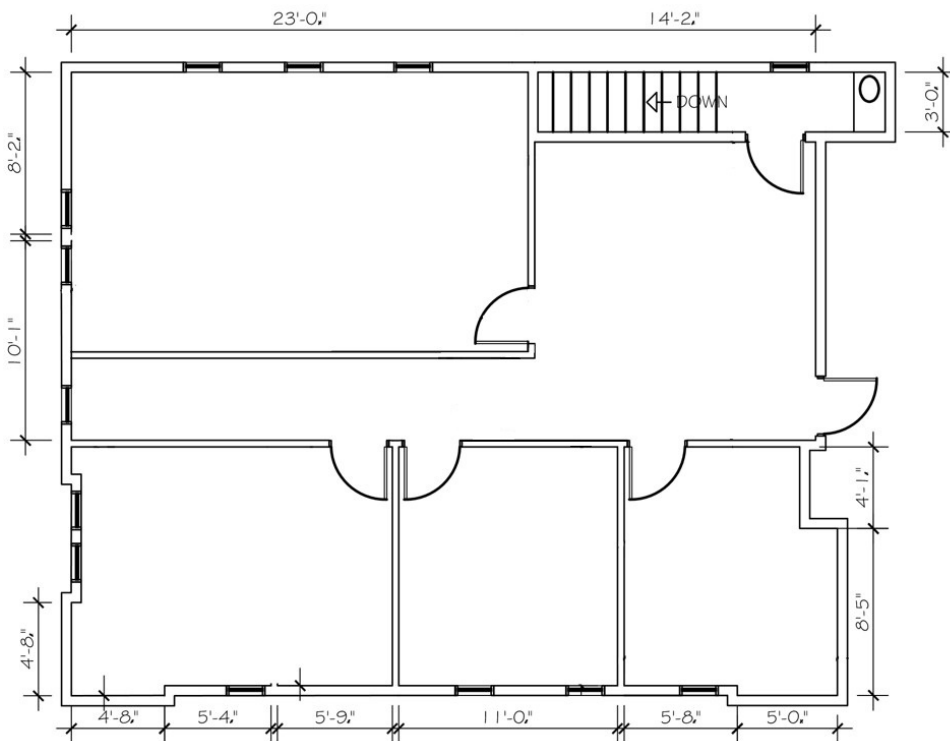
\$1,260.00 per net month

## Property Features

- Reception with a small kitchenette
- 3 offices, large training/work area
- Space will be repainted
- Available within 30 days

Recoverable costs include: General Maintenance & Repair, Management & Administration, Building Insurance, Landscape, Real Estate Taxes, Snow Removal, Water & Sewer, Hydro, Gas, HVAC Repair and Maintenance, and Common Area Cleaning.

Recoverable costs are estimated at \$1,260.00 per month for the year ending December 31, 2026



# PROPERTY OVERVIEW

Royal LePage® is a registered trademark of Royal Bank of Canada and is used under license by Residential Income Fund L.P., Bridgemarq Real Estate Service Inc. and Bridgemarq Real Estate Service Manager Limited. All offices are independently owned and operated, except those marked as indicated at [rlp.ca/disclaimer](http://rlp.ca/disclaimer). Not intended to solicit currently listed properties or buyers under contract. The above information is from sources believed reliable, however, no responsibility is assumed for the accuracy of this information. ©2025 Bridgemarq Real Estate Service Manager Limited. All rights reserved.

