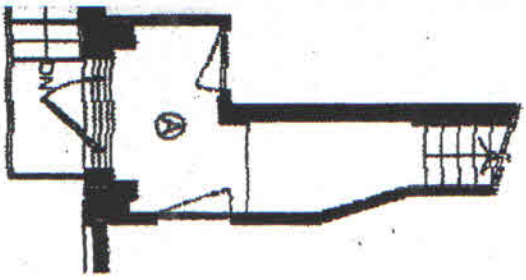
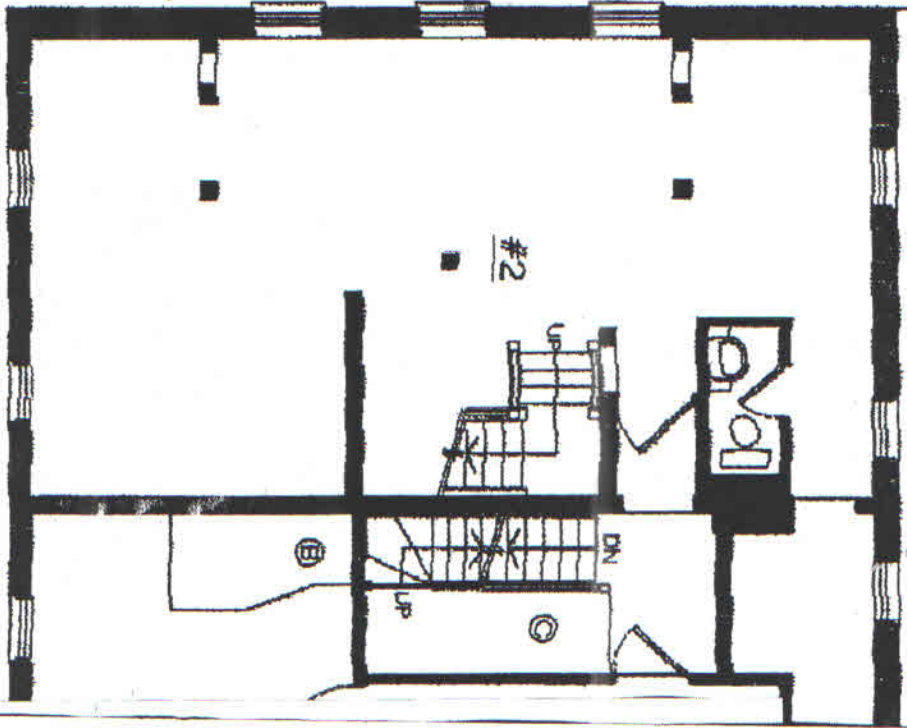


1/4 AREA Ⓐ = 11 Sqft
 1/3 AREA Ⓑ = 30 Sqft
 1/3 AREA Ⓒ = 33 Sqft

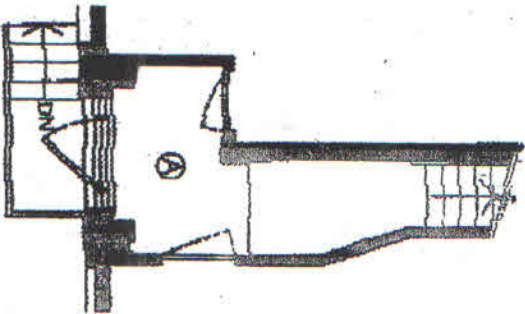


#2 - 1204, 3rd Street
 S.E. Calgary

#2 SECOND FLOOR = (837.8 + 1/4 Ⓐ + 1/3 Ⓑ)
 879 Sqft
 81.8 ft²



1/4 AREA Ⓐ = 11 Sqft
 1/3 AREA Ⓑ = 30 Sqft
 1/3 AREA Ⓒ = 33 Sqft



#3 - 1204, 3rd Street
 S.E. Calgary

#3 THIRD FLOOR = (792 + 1/3 Ⓒ)
 765 sq ft

