

2973 Oxford Street

West End Halifax



Central location



Signage Opportunity



Street parking



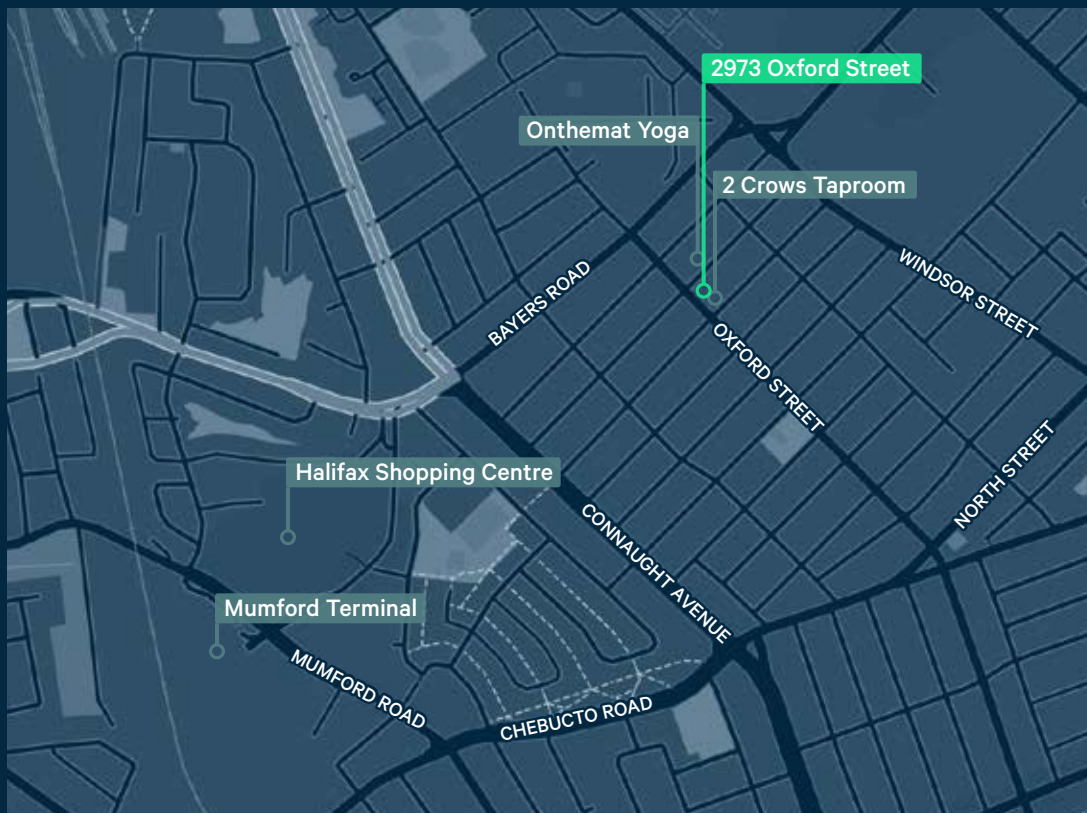
Property Overview

2973 Oxford Street is centrally located in the ever-popular West End of Halifax, with exceptional positioning on Oxford Street—a main vehicular and pedestrian thoroughfare in this high-demand area. This 700 sq. ft. retail space offers a unique opportunity for a retailer or commercial business to be centrally positioned in the West End of Halifax, with easy access from all major city nodes via the Windsor Street exchange, both Harbour bridges, downtown Halifax, Bedford, and Highway 102.

The immediate area is a mix of established residential communities, new mixed-use high-density developments, and street-front businesses— all of which come together to make the West End one of the most sought-after neighborhoods in all of HRM.

Property Information

Location:	2973 Oxford Street, Halifax
Size:	±700 SF
Monthly rent*:	\$1,750/month Includes all utilities (Water, power and heating)
Available:	Immediately



Ideally suited for
small businesses



Street parking +
Additional parking space

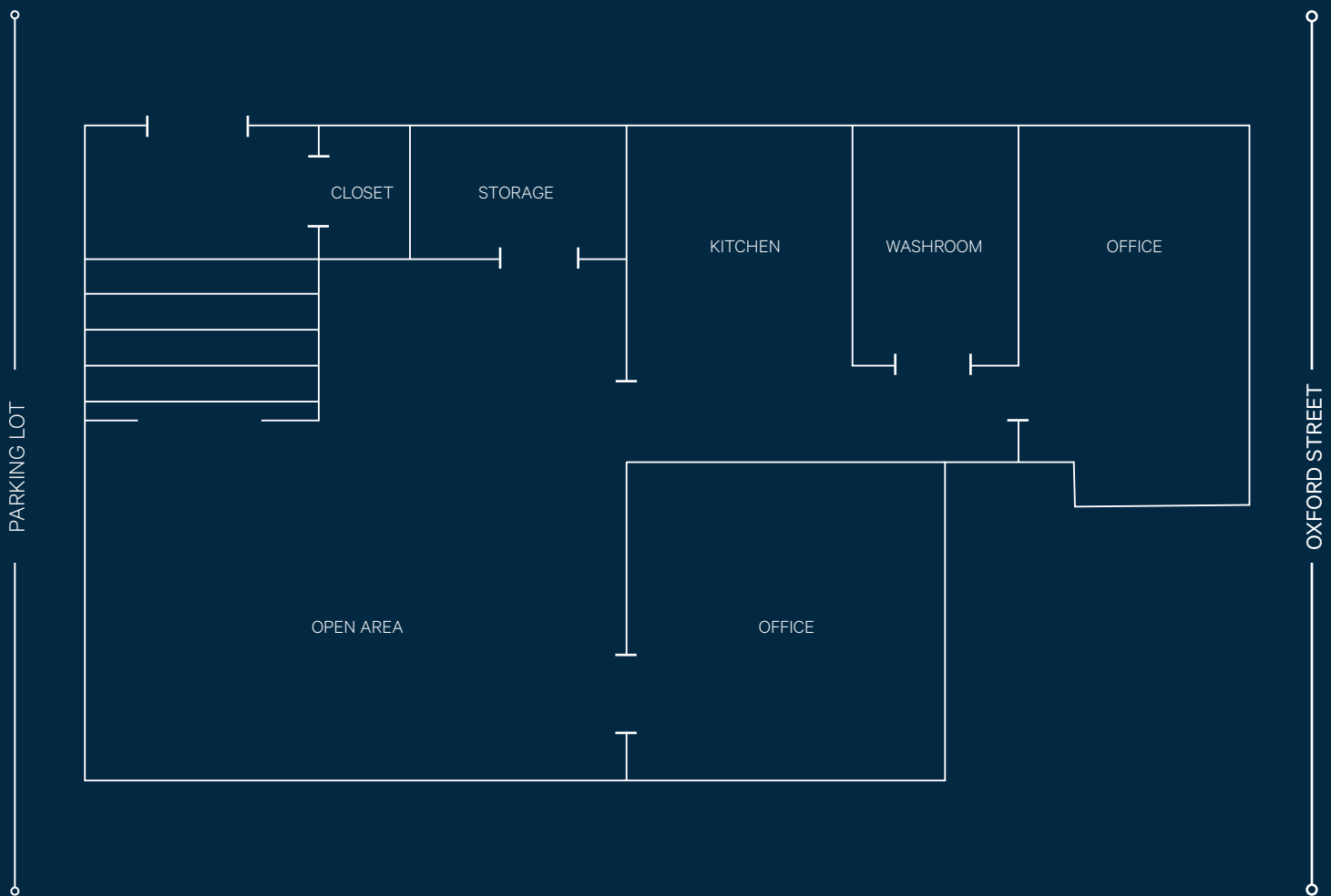


Located in a bustling
pedestrian hub

Floor Plan

Total 700 SF Available

*Floor plan is approximate



PRIME RETAIL FOR LEASE



2973 Oxford Street

West End Halifax

For more information, please contact

Mat Houston

Vice President
T 902 492 2074
mathew.houston@cbre.com

Breanna MacRury

Sales Support Coordinator
T 902 492 2082
breanna.macrury@cbre.com

This disclaimer shall apply to CBRE Limited, Real Estate Brokerage, and to all other divisions of the Corporation; to include all employees and independent contractors ("CBRE"). All references to CBRE Limited herein shall be deemed to include CBRE, Inc. The information set out herein, including, without limitation, any projections, images, opinions, assumptions and estimates obtained from third parties (the "Information") has not been verified by CBRE, and CBRE does not represent, warrant or guarantee the accuracy, correctness and completeness of the Information. CBRE does not accept or assume any responsibility or liability, direct or consequential, for the Information or the recipient's reliance upon the Information. The recipient of the Information should take such steps as the recipient may deem necessary to verify the Information prior to placing any reliance upon the Information. The Information may change and any property described in the Information may be withdrawn from the market at any time without notice or obligation to the recipient from CBRE. CBRE and the CBRE logo are the service marks of CBRE Limited and/or its affiliated or related companies in other countries. All other marks displayed on this document are the property of their respective owners. All Rights Reserved.

CBRE