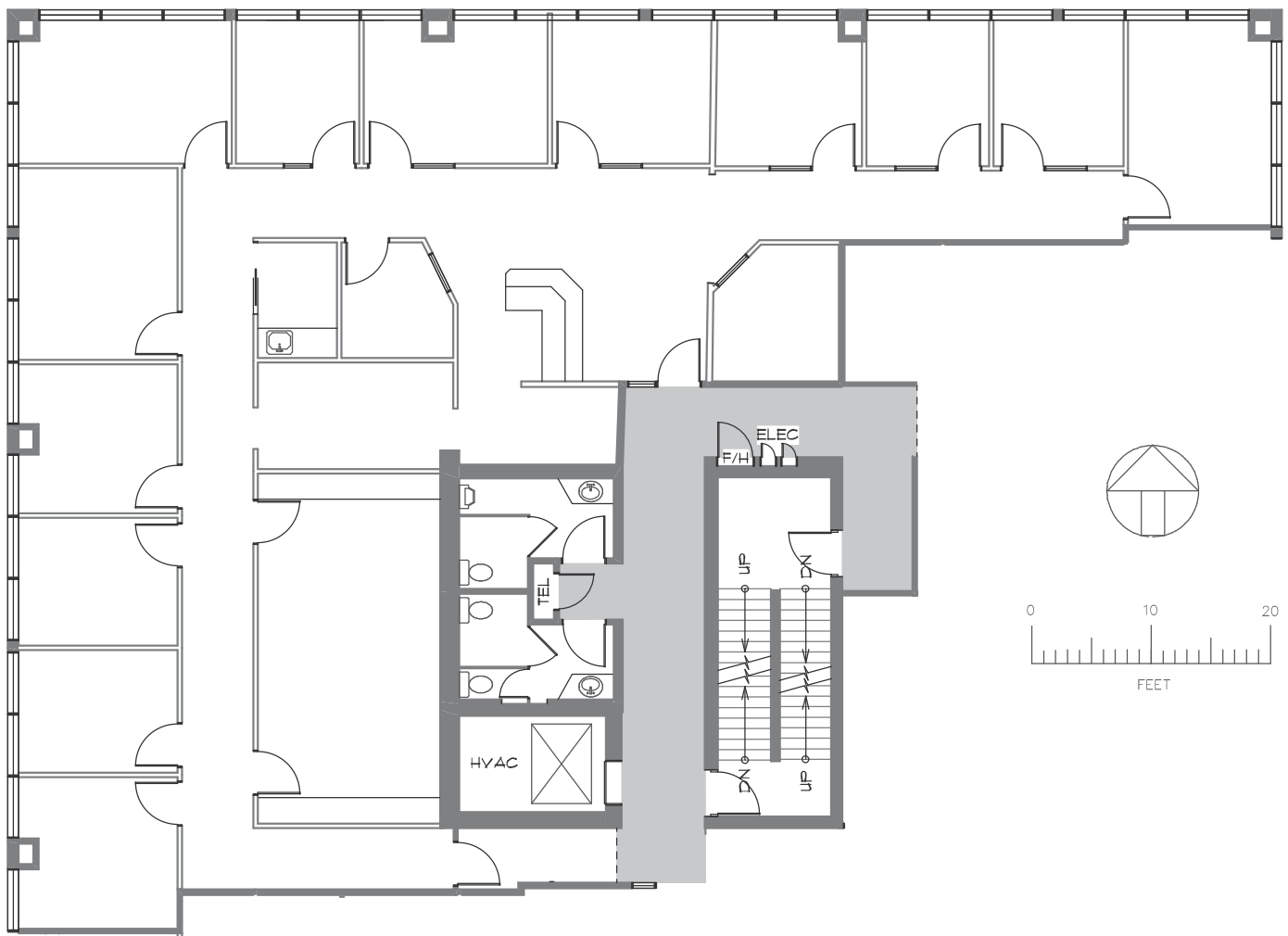


#3000 - 8171 Ackroyd Rd., Richmond

BASIC RENT: CONTACT LISTING AGENT

Rentable Area: 3,813sf | Available Immediately

Direct exposure to elevators with 13 perimeter offices, boardroom, and lunch room.



SANJAY SUDRA

604 331 5256

ssudra@warringtonpci.com

300 - 1030 West Georgia St., Vancouver, BC V6E 2Y3

E. & O.E.: The information contained herein was obtained from sources which we deem reliable, and while thought to be correct, is not guaranteed by Warrington PCI Management.



**WARRINGTON PCI
MANAGEMENT**