

Dome Tower

Downtown Sublease Opportunity

±7,294 SF of Office Space
28th Floor, 333 7 Avenue SW,
Calgary AB T2P 2Z1

PROPERTY OVERVIEW

Premium subleasing opportunity in Dome Tower. Located in the heart of downtown Calgary's financial and retail centre, Dome Tower provides an abundance of amenities including direct access to the east and west LRT, plus 15 connectivity, restaurants, shopping, and a fitness facility that is located in the Core Shopping Centre offers tenants a variety of fitness options including a cycling studio, fitness classes, and personal training.

PROPERTY HIGHLIGHTS

- » Suite is fully furnished and renovated to a high standard
- » Highrise floor
- » Tenant only fitness facility
- » Immediate access to the LRT
- » Various dining amenities nearby
- » Direct access to The Core Shopping Mall

For more information,
please contact:

Loveleen Bhatti, Executive VP

+1 403 973 4360

lbhatti@naiadvent.com

Roseleen Bhatti, Executive VP

+1 403 605 2294

rbhatti@naiadvent.com



SUBLEASE DETAILS

LEASABLE AREA	±7,294 SF
SUBLEASE RATE	Market
OP COSTS	\$20.73 PSF (est. 2025)
TERM EXPIRY	June 29, 2030
AMENITIES	Tenant-only fitness centre, +15 access

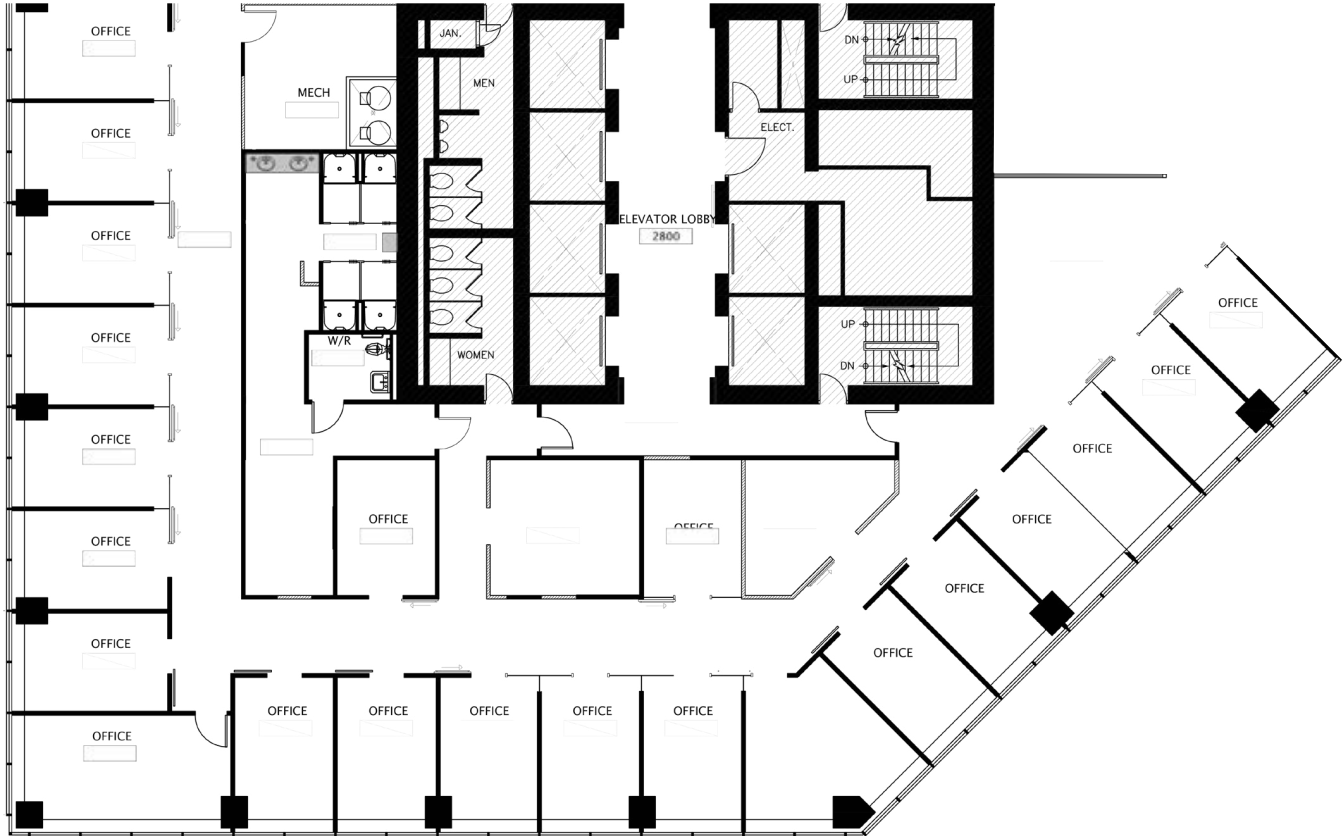


For more information,
please contact:

Loveleen Bhatti, Executive VP
+1 403 973 4360
lbhatti@naiadvent.com

Roseleen Bhatti, Executive VP
+1 825 417 0401
rbhatti@naiadvent.com

FLOOR PLAN



28TH FLOOR - 7,294 SF

- » 23 offices
- » Open space for workstations
- » Meeting room
- » Storage
- » Printer area

For more information,
please contact:

Loveleen Bhatti, Executive VP
+1 403 973 4360
lbhatti@naiadvent.com

Roseleen Bhatti, Executive VP
+1 825 417 0401
rbhatti@naiadvent.com



THIS BROCHURE IS INTENDED FOR INFORMATION PURPOSES ONLY AND SHOULD NOT BE RELIED UPON FOR ACCURATE FACTUAL INFORMATION BY THE RECIPIENTS HEREOF. THE INFORMATION CONTAINED HEREIN IS BASED ON INFORMATION WHICH NAI ADVENT DEEMS RELIABLE, HOWEVER, NAI ADVENT ASSUMES NO RESPONSIBILITY FOR THE DEGREE OF ACCURACY OF SUCH INFORMATION, NOR DOES NAI ADVENT REPRESENT OR WARRANT THE INFORMATION CONTAINED HEREIN. RECIPIENTS HEREOF SHOULD CONDUCT THEIR OWN INVESTIGATIONS TO DETERMINE THE ACCURACY OF INFORMATION CONTAINED HEREIN. THE INFORMATION CONTAINED HEREIN IS SUBJECT TO CHANGE WITHOUT NOTICE.

For more information,
please contact:

Loveleen Bhatti, Executive VP
+1 403 973 4360
lbhatti@naiadvent.com

Roseleen Bhatti, Executive VP
+1 825 417 0401
rbhatti@naiadvent.com