

Join Victoria's Historic Hudson District

LEASING OPPORTUNITIES

HUDSON DISTRICT

HUDSON MEWS

UNIT 110 - 780 FISGARD STREET
OFFICE/RETAIL OPPORTUNITY

Details

SIZE

2,172 SF

LEASE RATE

Contact Listing Agents

ADDITIONAL RENT

\$19.17 PSF

AVAILABLE

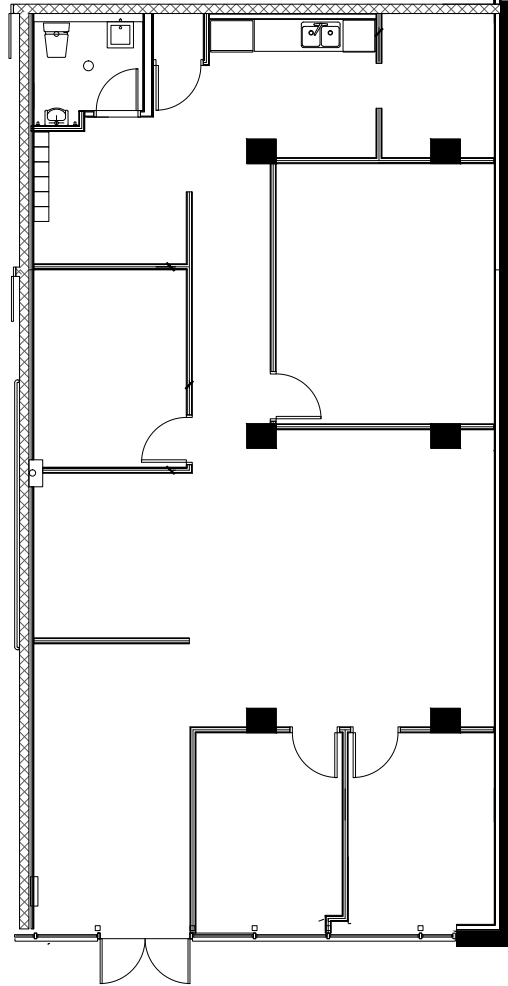
Immediately

ZONING

CBD-2: Central Business District
2 - Site Specific

PARKING

32 commercial stalls



Highlights

- * Currently configured with 3 offices, meeting room, kitchen, & reception area - can be reconfigured to suit tenants needs
- * Unit can be built out for retail/food/service use



Unit 110

Site Plan



Highlights

- ★ Over 977 existing residential units
- ★ Easily accessible via all modes of transportation
- ★ Demisable & flexible units
- ★ Strong & diverse existing tenant mix

Available Units

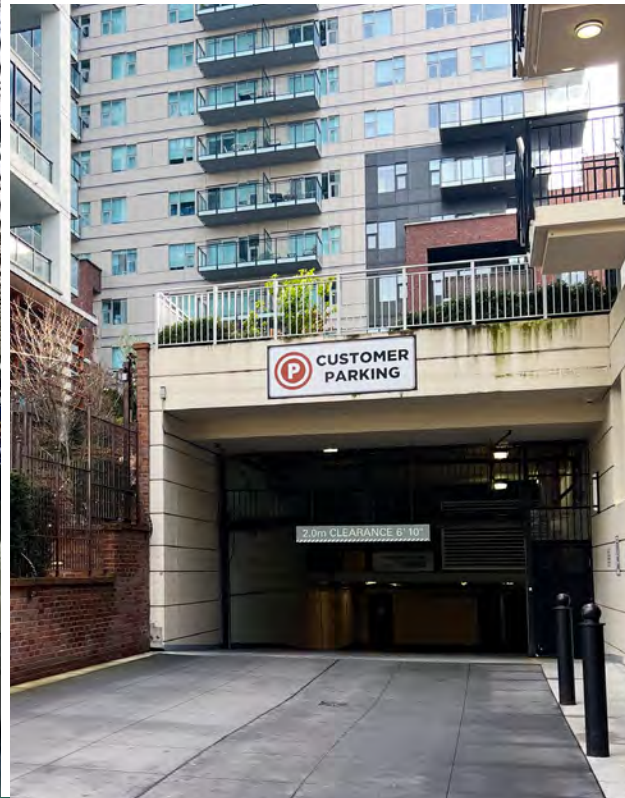
- HUDSON MEWS
 - UNIT 110 (OFFICE)
 - UNIT 120 **LEASED**
- HUDSON HOUSE
 - UNIT 101 (RETAIL)



ODD BURGER



PVOLVE



The people - 1km radius



17,580

Population



3,849

Households



72.5%

Labour force participation



\$79,312

Avg. Household Income



56.8%

Of population between ages 20-44



39.3%

Education University Degree

Discovery Coffee



Citrus & Cane



Castello Coffee



Bangkok Modern Thai Cuisine



Float House Victoria



Shizen Japanese Restaurant



GV Cafe & Bakery



Indian Aroma Restaurant



YuaBistro



Bao



The Hallway



Red Mirror Salon



Habit Coffee



Varsha Indian Kitchen



Sura Korean GrillHouse



The Cozy Place



Green Leaf Vietnamese Bistro



70'EES Pizza



Island Poke



Golden City Restaurant



Popular Nails by Bella



Freshslice Pizza



Tora Tiki



Marilena Cafe & Raw Bar



Rudi



Deco De Mode Beauty Clinic



Sukhothai Thai Spa

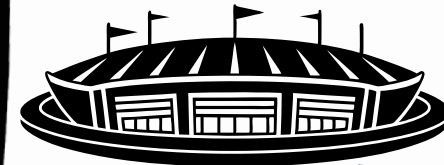


Nubo Japanese Tapas



THE NEIGHBOURHOOD

save on foods
MEMORIAL CENTRE



DOUGLAS STREET

GOVERNMENT STREET

PANDORA AVENUE

HUDSON WALK ONE

HUDSON WALK TWO

PROVINCE OF BC

THE HUDSON

HUDSON PLACE ONE

HUDSON MEWS

HUDSON HOUSE

99

WALK SCORE

93

TRANSIT SCORE

99

BIKE SCORE





HUDSON PLACE ONE

HUDSON WALK TWO

THE HUDSON

HUDSON MEWS

HUDSON WALK ONE

FOR LEASING OPPORTUNITIES

Jeff Lougheed

Vice President

jeff.lougheed@cbre.com

250 386 0001

Mitch Bryan

Associate

mitch.bryan@cbre.com

250 385 1225

HUDSON HOUSE

CBRE Limited
800 Yates Street #110 | Victoria, BC
www.cbrevictoria.com



This disclaimer shall apply to CBRE Limited, Real Estate Brokerage, and to all other divisions of the Corporation; to include all employees and independent contractors ("CBRE"). The information set out herein, including, without limitation, any projections, images, opinions, assumptions and estimates obtained from third parties (the "Information") has not been verified by CBRE, and CBRE does not represent, warrant or guarantee the accuracy, correctness and completeness of the Information. CBRE does not accept or assume any responsibility or liability, direct or consequential, for the Information or the recipient's reliance upon the Information. The recipient of the Information should take such steps as the recipient may deem necessary to verify the Information prior to placing any reliance upon the Information. The Information may change and any property described in the Information may be withdrawn from the market at any time without notice or obligation to the recipient from CBRE. CBRE and the CBRE logo are the service marks of CBRE Limited and/or its affiliated or related companies in other countries. All other marks displayed on this document are the property of their respective owners. All Rights Reserved.

Mapping Sources: Canadian Mapping Services canadamapping@cbre.com; DMTI Spatial, Environics Analytics, Microsoft Bing, Google Earth.