

For Lease

#203 - 1868 Marine Drive
West Vancouver, BC



Contact

Brayden Sangha

Personal Real Estate Corporation

CBRE Limited | Office Leasing & Sales

brayden.sangha@cbre.com

604 329 8882

CBRE

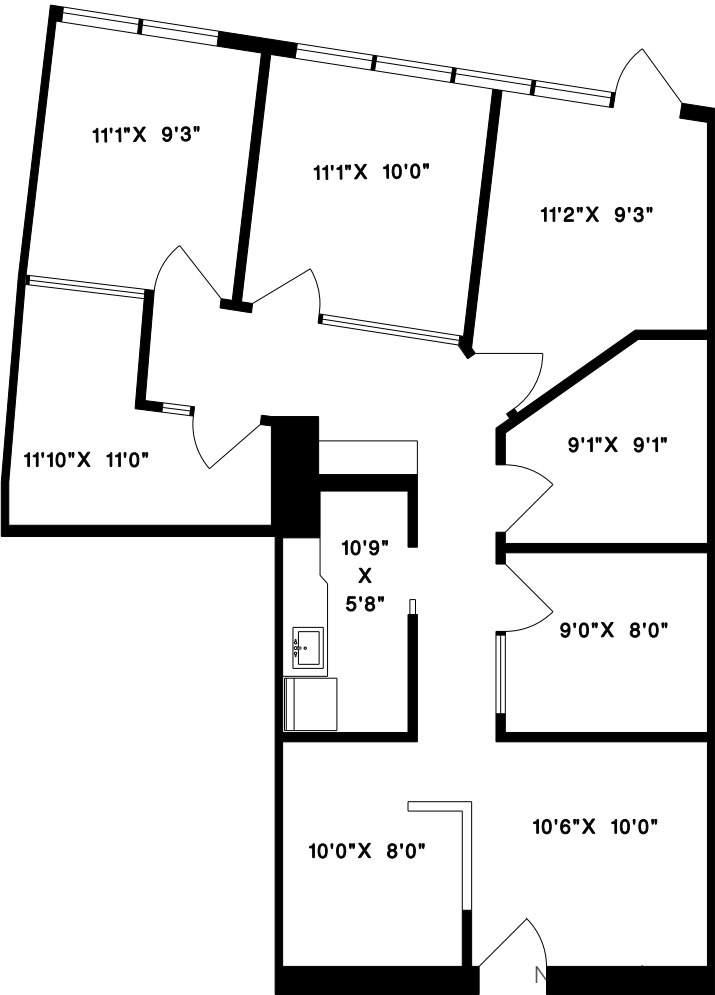
#203 - 1868 Marine Drive
West Vancouver, BC

Office Space | For Lease



Suite Details

- Reception and waiting room
- Kitchenette
- 3 window offices
- 3 interior offices
- Access to private patio/deck



Not to scale

Ocean Walk is a two-storey office and retail building located on the corner of 18th Street and Marine Drive in the heart of West Vancouver’s prestigious Ambleside neighbourhood.



Property Details

Premises	Suite #203
Area Available	1,225 SF
Asking Rate	Contact Listing Agent
Op. Costs/Taxes	\$19.22 PSF (2025 est.)
Availability	July 1, 2025
Parking	2 reserved stalls available @ \$100/stall/month plus taxes



#203 - 1868 Marine Drive

West Vancouver, BC



Ambleside boasts some of the highest residential density with the greatest number of high-rise residential towers in West Vancouver. The area is home to many restaurants, shops, banks, boutiques, and professional and medical offices.

● RESTAURANT

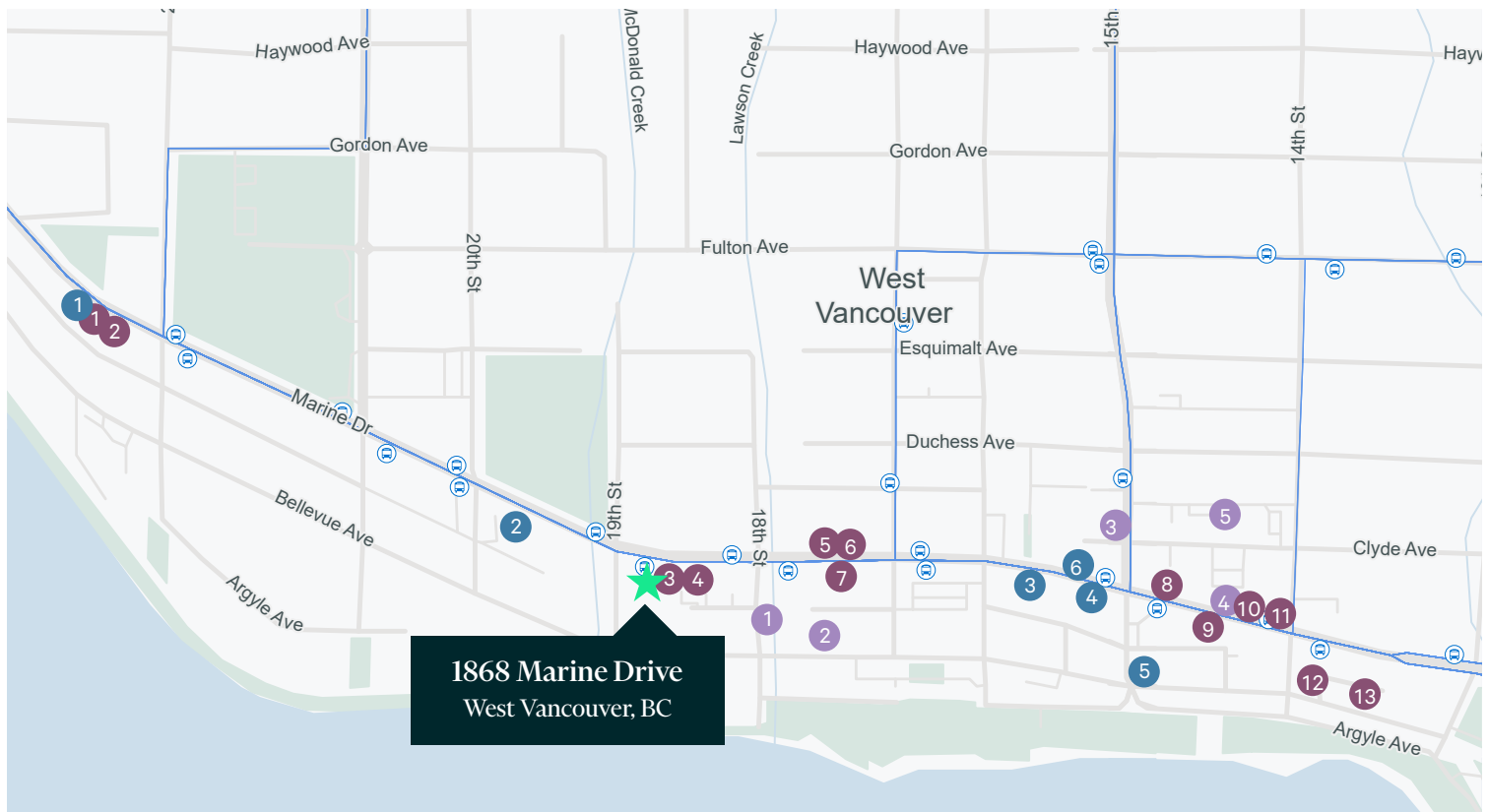
1. Zen Japanese Restaurant
2. Mangia e Bevi
3. Raku Japanese Kitchen
4. Cindy's
5. Casa di Amici Italian & Indian Bistro
6. Tenton Ramen N Tonkatsu
7. Swad Indian Kitchen
8. Ginger & Soy Chinese Cuisine
9. Carmelo's Ristorante Italiano
10. Mani's Restaurant
11. Wooden Fish
12. Earls Kitchen + Bar
13. Ancora Waterfront Dining and Patio

● CAFE

1. The Modern Pantry
2. Brown Bean Coffee
3. C.C. Violin Patisserie & Café
4. Bean Around The World Coffees
5. Crema Cafe Bar
6. Savary Island Pie Company

● FITNESS

1. The Bar Method
2. Taurus Fitness
3. Anytime Fitness
4. Freedom Health Studio
5. F45 Training



Contact

Brayden Sangha

Personal Real Estate Corporation

CBRE Limited | Office Leasing & Sales

brayden.sangha@cbre.com

604 329 8882

CBRE Limited | 1021 West Hastings Street | #2500 | Vancouver, BC V6E 0C3 | www.cbre.ca

This disclaimer shall apply to CBRE Limited, Real Estate Brokerage, and to all other divisions of the Corporation; to include all employees and independent contractors ("CBRE"). The information set out herein, including, without limitation, any projections, images, opinions, assumptions and estimates obtained from third parties (the "Information") has not been verified by CBRE, and CBRE does not represent, warrant or guarantee the accuracy, correctness and completeness of the Information. CBRE does not accept or assume any responsibility or liability, direct or consequential, for the Information or the recipient's reliance upon the Information. The recipient of the Information should take such steps as the recipient may deem necessary to verify the Information prior to placing any reliance upon the Information. The Information may change and any property described in the Information may be withdrawn from the market at any time without notice or obligation to the recipient from CBRE. CBRE and the CBRE logo are the service marks of CBRE Limited and/or its affiliated or related companies in other countries. All other marks displayed on this document are the property of their respective owners. All Rights Reserved.

Mapping Sources: Canadian Mapping Services canadamapping@cbre.com; DMTI Spatial, Environics Analytics, Microsoft Bing, Google Earth.