



For sublease

Crestwood Corporate Centre 7
13775 Commerce Parkway

13775 Commerce Parkway / Richmond

Location

Crestwood Corporate Centre is approximately 25 minutes away from Downtown Vancouver and about 15 minutes to Vancouver International Airport. Bordered by major thoroughfares there is easy access to Delta, Surrey, New Westminister and much of Metro Vancouver.

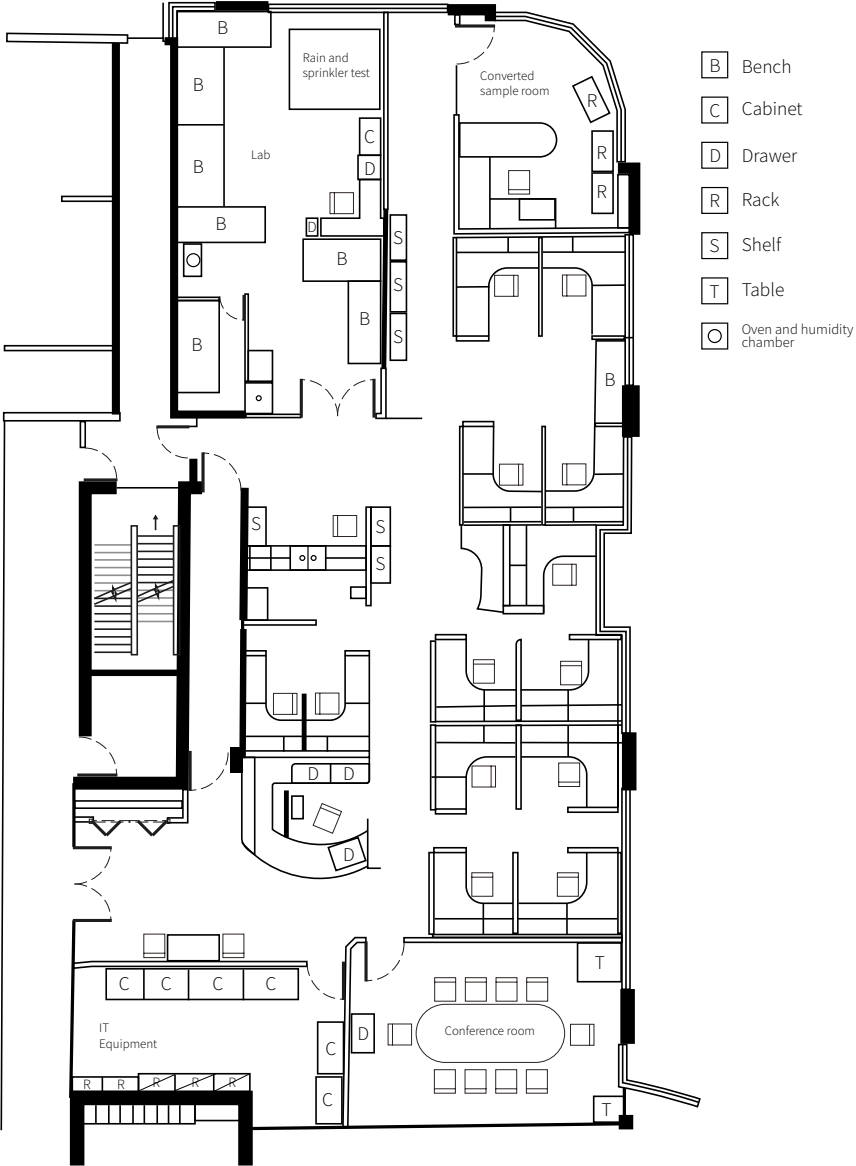
Suite 130

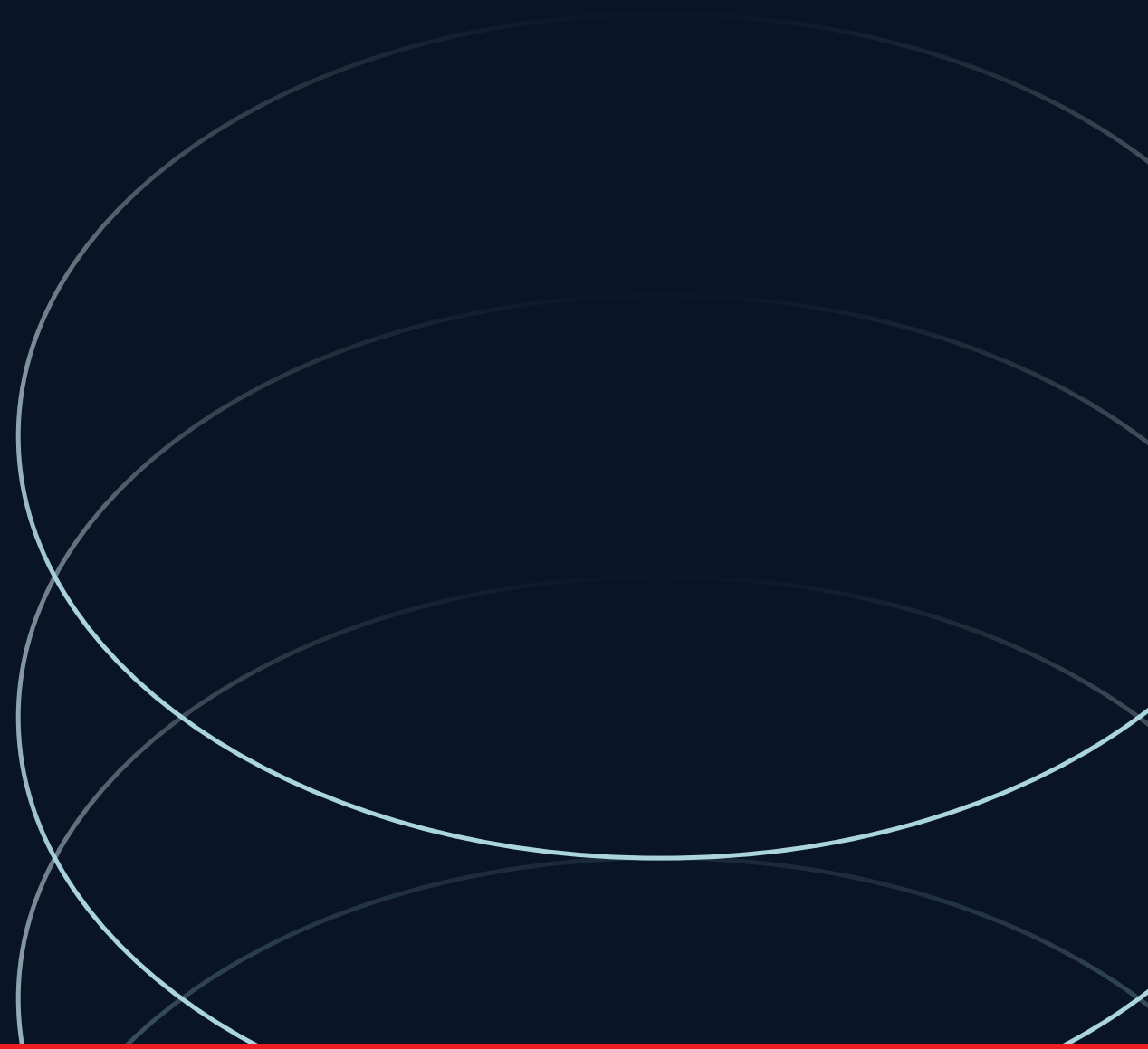
New to market, fully furnished, short-term sublease available at below market rates. The ground floor space offers a unique opportunity to lease an office with a functioning lab. The lab portion is roughly 500 square feet, while the office is comprised of one private office, one boardroom, a reception desk, a kitchen, and 14 open-plan workstations. Furniture can be made available upon request.



Suite	130
Size	3,729 s.f.
Availability	Immediately
Sublease Expiry	February 27, 2025
Basic Rent	Contact listing agent
Additional Rent	\$13.58 psf/pa
Parking	13 parking stalls
Furniture	Available

Suite 130 Floorplan





Corbin MacDonald*

Vice President

corbin.macdonald@jll.com

+1 604 313 4572

jll.ca