



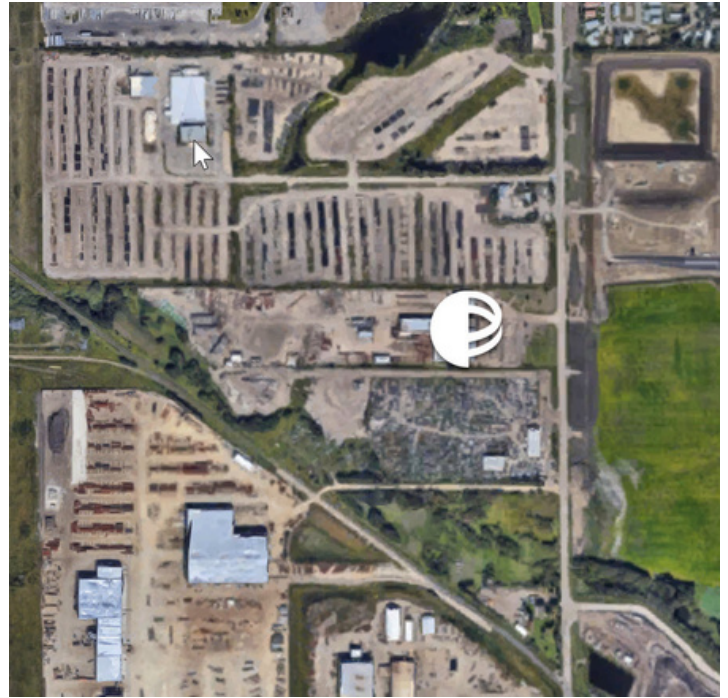
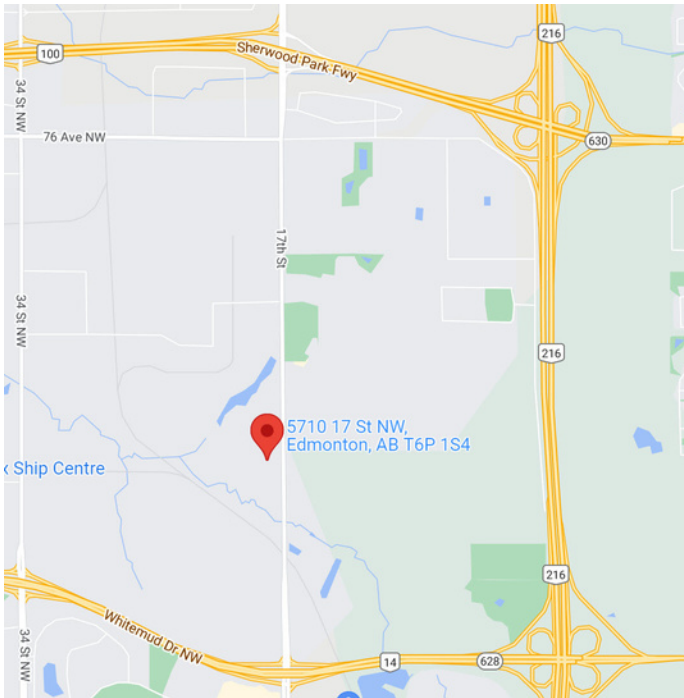
NEWLY RENOVATED INDUSTRIAL - MULTIPLE BAY OPTIONS
5710 - 17 STREET

Dennis Aubin CPA, CMA

daubin@perigoninc.ca
780-554-0520

5710 - 17 STREET

FOR LEASE



PROPERTY SUMMARY

Lease Rate	Market
Building Size:	70,981 sf
Available SF:	12,322 - 64,821 sf
Lot Size:	20 Acres
Yard Size:	1 - 8 Acres
Zoning:	IM - Medium Industrial
Availability:	Immediately

PROPERTY OVERVIEW

Heavy Industrial facility for sale or lease in Edmonton's Southeast Industrial subdivision with numerous demising options

PROPERTY HIGHLIGHTS

- New Roof & Exterior Cladding
- New Flooring, drop-ceiling, and wall, door and trim paint
- New Grade-Doors throughout and newly painted shop bay
- 3 Large Main Shop Bays with 3 ancillary buildings, ample parking
- Extensive office & staff facilities on 2 floors
- Cranes throughout, including 2 bays w/ interior/exterior gantry cranes
- Numerous welding plug-ins with make-up & exhaust air units
- Heavy Power (800 amp @ 480, tbc)
- Large structures, fenced yard with excellent drainage & lighting
- Located directly on 17th street with good access to Whitemud Drive,
- Sherwood Park Freeway and Anthony Henday Drive

Dennis Aubin CPA, CMA

daubin@perigoninc.ca
780-554-0520

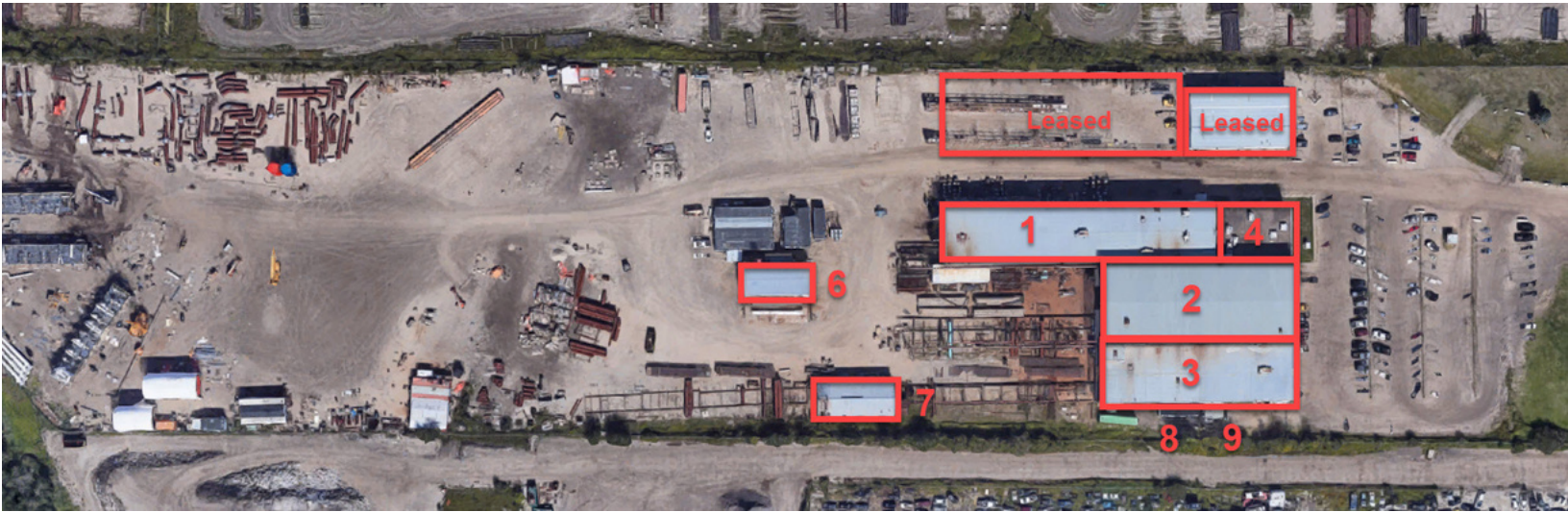


10548 - Whyte Avenue | Edmonton, AB T6E 2A4 | 780-426-4360

WWW.PERIGONCOMMERCIAL.CA

5710 - 17 STREET

FOR LEASE



SUITE	SIZE (SF)	DESCRIPTION
#1- North Bay Fab Shop & Whse.- LEASED	13,420 sf	3 x 5-Ton Bridge Cranes, Grade Doors-4 x14', 1 x 18', 1 x Swing door
#2-Middle Bay Fab Shop	16,160 SF	2x10 ton, 1x20 ton int./ext. cranes w/ 200' gantry, 2xswing type doors
#3-South Bay Fab Shop	12,322 SF	3x5 ton int./ext. cranes w/ 200' gantry, 2xswing type doors
#4a-Office Space-Main	8,606 SF F	FULLY RENOVATED THROUGHOUT
#4B-Office Space-2nd Floor 30% LEASED	8,606 SF	FULLY RENOVATED THROUGHOUT
#5-North Shop - LEASED	6,160 SF	-
#6-Paint Shop	2,424 SF	-
#7-Pipe Bend Shop	2,583 SF	-
#8&9-South Metal Building & South Trailer	700 SF	-

Dennis Aubin CPA, CMA

daubin@perigoninc.ca
780-554-0520

10548 - Whyte Avenue | Edmonton, AB T6E 2A4 | 780-426-4360



WWW.PERIGONCOMMERCIAL.CA

5710 - 17 STREET

FOR LEASE



Dennis Aubin CPA, CMA

daubin@perigoninc.ca

780-554-0520

10548 - Whyte Avenue | Edmonton, AB T6E 2A4 | 780-426-4360


PERIGON
COMMERCIAL

WWW.PERIGONCOMMERCIAL.CA