

Prime Office & Medical Space | For Lease

**CBRE**

# 1200 Burrard Street

VANCOUVER, BC

Turnkey suites, ready for occupancy  
Prominent corner location



# The Opportunity

Prime space available for office and medical use.

1200 Burrard Street offers turnkey office and medical space solutions in a prime West End location in Downtown Vancouver. Prominently located at Burrard and Davie it offers convenience and prestige to medical and office space users. The property is operated in a first-class manner and is proudly managed by The Shon Group.

## Building Features



7,300 SF floor plates provide ideal layouts with plenty of window exposure for smaller tenants



Turnkey offices available for immediate occupancy



Competitive rental rates



## Salient Facts

### Available Areas

Unit	Area	Available
#201	3,634 SF	Immediately (Medical Space)
<b>#311</b>	<b>1,302 SF</b>	<b>Display Suite</b>
#305/#315	3,796 SF	Immediately
#412	1,553 SF	Shell Space (Medical plan available)
#501	1,175 SF	Shell Space (Medical plan available)
<del>#514</del>	<del>1,770 SF</del>	<del>LEASED</del>
<b>#602</b>	<b>1,737 SF</b>	<b>Display Suite (Medical Space)</b>
#700	5,116 SF	Shell Space
<del>#801/#810</del>	<del>1,635 SF</del>	<del>LEASED</del>
#1030	1,689 SF	Immediately

### Parking

Underground gated parking available for tenants at 1 stall per 2,000 SF leased.

### Additional Rent

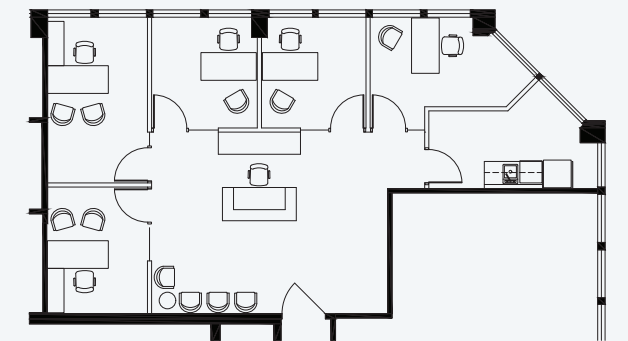
\$25.15 PSF (2026 estimate)

### Net Rent

Contact Listing Agent

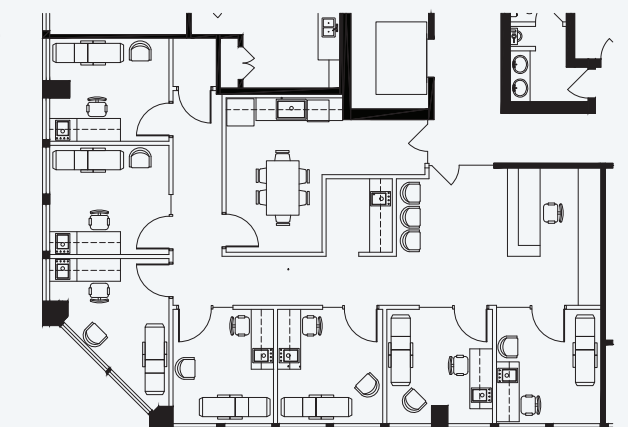
## Display Suites

#311



NOT TO SCALE

#602






NOT TO SCALE



## The Location

1200 Burrard Street is prominently situated at the intersection of Burrard and Davie Streets in Downtown Vancouver. St. Paul's Hospital is located one block north of the property and the Law Courts are located two blocks to the north. The Trendy Davie Street Village is within easy walking distance offering plentiful restaurant and retail amenities.

## Walk Score

	96	World-class Transit
	100	Walker's Paradise
	92	Very Bikeable

Source: walkscore.com

## Contact Agent

### Geoff Donelly

Personal Real Estate Corporation  
Senior Vice President | Office Properties  
geoff.donelly@cbre.com  
604 662 5130

CBRE Limited | 1021 West Hastings Street #2500, Vancouver, BC [www.cbre.com](http://www.cbre.com)

This disclaimer shall apply to CBRE Limited, Real Estate Brokerage, and to all other divisions of the Corporation; to include all employees and independent contractors ("CBRE"). The information set out herein, including, without limitation, any projections, images, opinions, assumptions and estimates obtained from third parties (the "Information") has not been verified by CBRE, and CBRE does not represent, warrant or guarantee the accuracy, correctness and completeness of the Information. CBRE does not accept or assume any responsibility or liability, direct or consequential, for the Information or the recipient's reliance upon the Information. The recipient of the Information should take such steps as the recipient may deem necessary to verify the Information prior to placing any reliance upon the Information. The Information may change and any property described in the Information may be withdrawn from the market at any time without notice or obligation to the recipient from CBRE. CBRE and the CBRE logo are the service marks of CBRE Limited and/or its affiliated or related companies in other countries. All other marks displayed on this document are the property of their respective owners. All Rights Reserved.

Mapping Sources: Canadian Mapping Services [canadamapping@cbre.com](mailto:canadamapping@cbre.com); DMTI Spatial, Environics Analytics, Microsoft Bing, Google Earth.

